

# Dental Space

915 N Milwaukee Ave -  
Libertyville, IL

## FOR LEASE

Turnkey dental/medical office opportunity at 915 Milwaukee Avenue in Libertyville, featuring an existing, well-designed buildout with six (6) operatories. The property offers excellent visibility along Milwaukee Avenue, strong daily traffic exposure, and ample on-site parking for both staff and patients. Ideal for dental, or related medical users seeking a second-generation space in a strong Lake County submarket, the location provides convenient access to affluent surrounding communities and a well-established patient base.



Lease Rate:  
\$30.00 SF/yr (NNN)

Lease Rate:  
\$30.00 SF/YR (NNN)

Parking Spaces:  
40

Available SF:  
1,650 SF

Lease Term:  
Negotiable



# 915 N Milwaukee Ave

Libertyville, IL

# DEMOGRAPHICS MAP AND REPORT

## Population

1 MILE

7,583 42

TOTAL POPULATION

41,076 131,329  
3 MILES 5 MILES

AVERAGE AGE

42 41  
3 MILES 5 MILES

## Households and Income

1 MILE

2,955 2.6

TOTAL HOUSEHOLDS

15,202 49,319  
3 MILES 5 MILES

# OF PERSONS PER HH

2.7 2.7  
3 MILES 5 MILES

## Race

1 MILE

6,329

TOTAL POPULATION - WHITE

29,909 81,135  
3 MILES 5 MILES

1 Mile

42 43

AVERAGE AGE (MALE)

41 40  
3 MILES 5 MILES

AVERAGE AGE (FEMALE)

43 42  
3 MILES 5 MILES

1 Mile

\$206,453 \$696,922

AVERAGE HH INCOME

\$204,744 \$163,336  
3 MILES 5 MILES

AVERAGE HOUSE VALUE

\$567,586 \$442,764  
3 MILES 5 MILES

1 Mile

385

TOTAL POPULATION - ASIAN

4,612 18,149  
3 MILES 5 MILES





# 915 N Milwaukee Ave

## Libertyville, IL

## ADDITIONAL PHOTOS

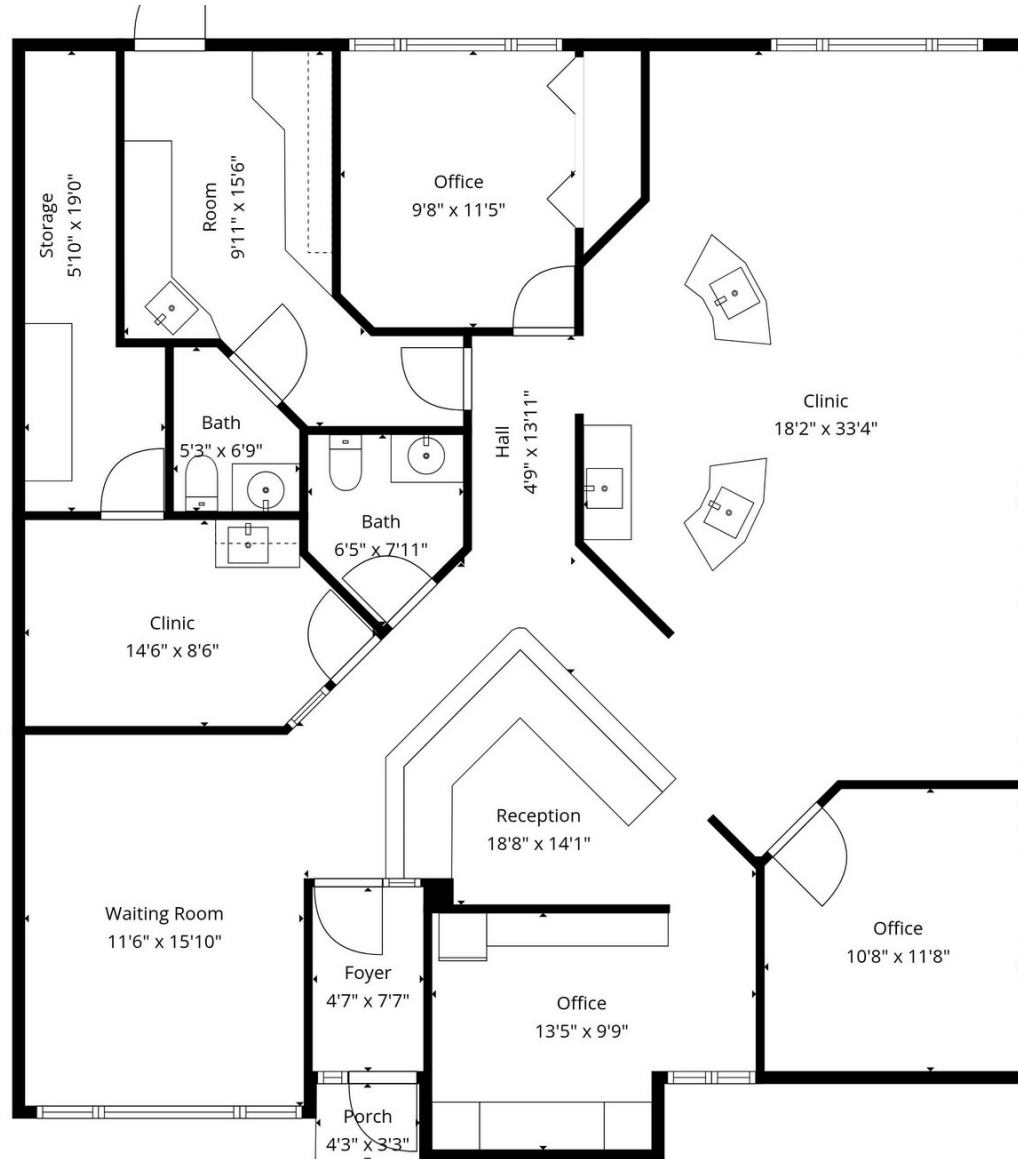




915 N Milwaukee Ave

Libertyville, IL

FLOOR PLANS





## Libertyville, IL

## RETAILER MAP

