

10200

J E F F E R S O N

C U L V E R C I T Y , C A 9 0 2 3 2



Kidder
Mathews

± 43,167 SF INDUSTRIAL / CREATIVE OFFICE FOR LEASE



Premises	± 43,167 SF
Address	10150-10200 Jefferson Blvd, Culver City 90232
Occupancy	Immediate
Lease Rate	Call Agent
Term	1 - 3 Years
Parking	103 Spaces
Features	<ul style="list-style-type: none">• Ceiling Height: Ranges from 12' to 15'• Natural Light• Wide Open Bays• Roll-Up Doors• Bike Parking• Close Proximity to Downtown Culver City• Major Boulevard Exposure• Ready for Immediate Occupancy



10200

J E F F E R S O N



10150-10200 Jefferson boulevard is a 43,167 SF concrete tilt up building that has undergone white box refurbishment and is available for immediate occupancy.

The building affords major boulevard identity, 103 car parking spaces, new restrooms, and 3 ground level drive in loading doors, one of which is semi-dock high which can accommodate trucks and vans.

There is a framed office pod which can be finished to create an office component with abundant natural light.





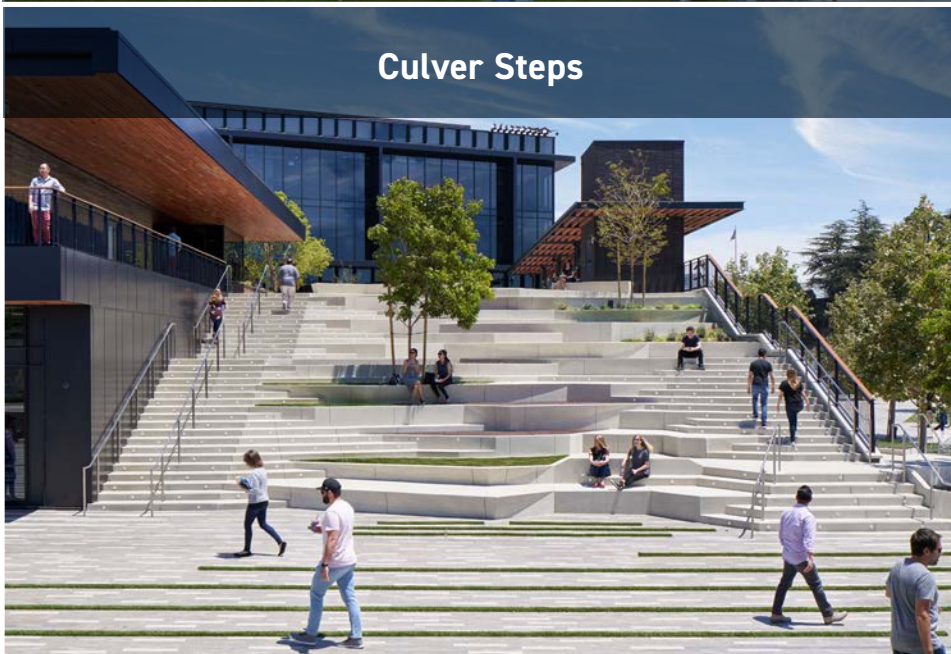




Ivy Station



Platform



Culver Steps



Culver Studios



THE CULVER STUDIOS
GATE 2

10200 JEFFERSON

TENANTS OF NOTE



Century City

Downtown Culver City

amazon

HBO



MedMen

PAIGE

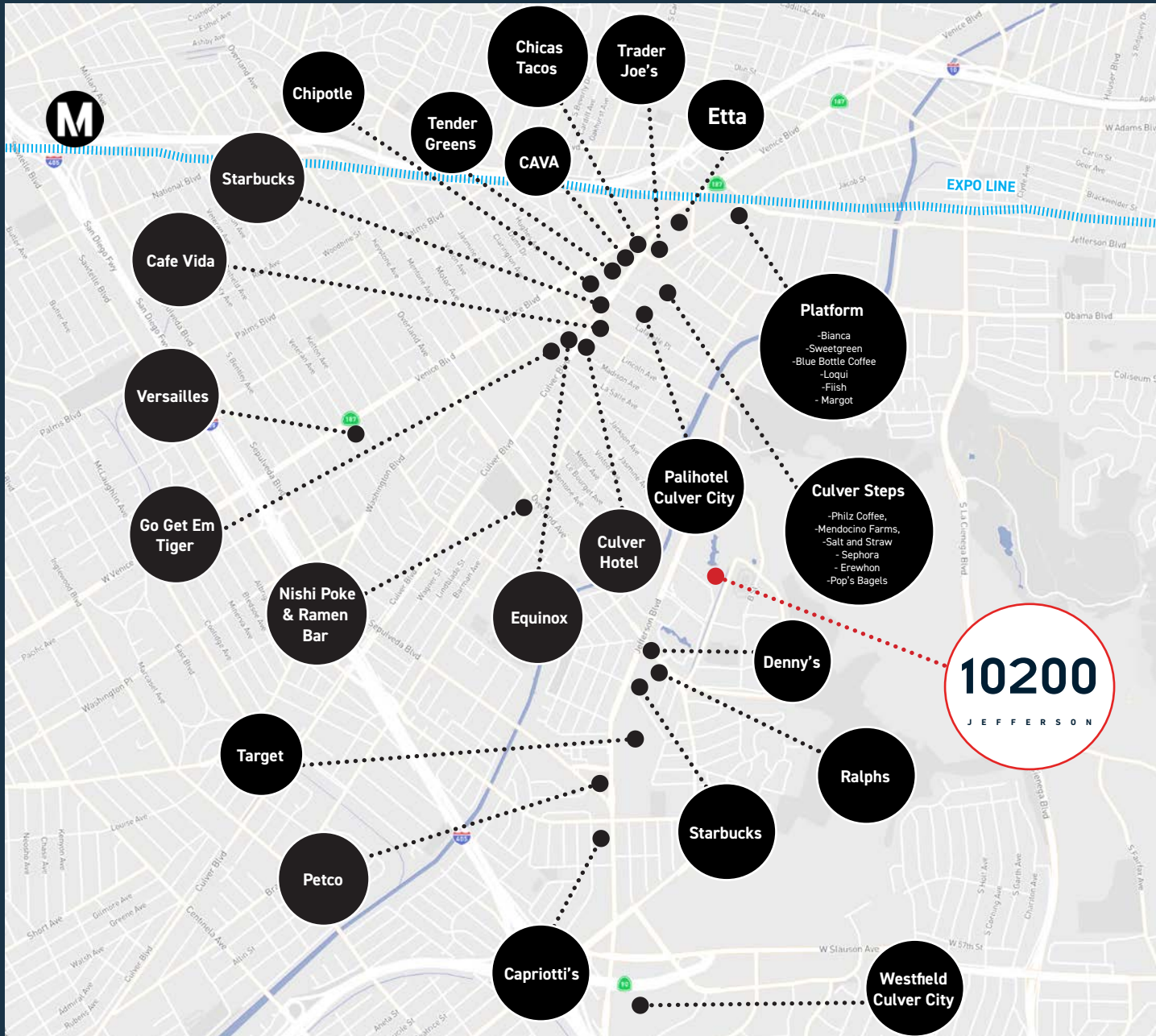
BIRD

npr

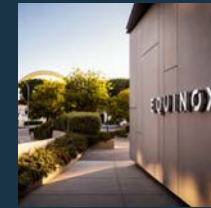


NantStudios





Minutes Away From Amenities



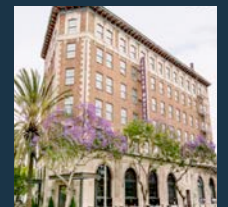
Fitness



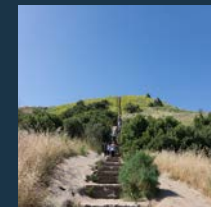
Restaurants



Mass Transit



Hotels



Hiking



Coffee Shops



Fast Food



Markets



**Kidder
Mathews**

A DIVISION OF



**LEE &
ASSOCIATES**



Aleks Trifunovic, SIOR

President

+1 310 899 2721

atrifunovic@leewestla.com

BKR DRE #01363109

Luke Staubitz, SIOR

Executive Vice President

+1 310 906 3288

luke.starbuitz@kidder.com

AGT DRE #01037737

Keith Fielding

PRINCIPAL

+1 310 899 2719

kfielding@leewestla.com

AGT DRE #01729915

1508 17th Street, Santa Monica, CA 90404 | 310.899.2700 | www.leewestla.com | DRE 01222000

No warranty or representation is made to the accuracy of the foregoing information. Terms of sale or lease are subject to change or withdrawal without notice.