

# FOR LEASE

## Raintree North Shopping Center

324 SW Greenwich Drive, Lee's Summit, MO 64082



- 1,690 +/- SF in Lot 6 outparcel (former Verizon)
- 1,512 +/- SF in Lot 6 outparcel (former nail salon)
- 1,244 +/- SF in Lot 4B outparcel (former 9Round)
- High Volume Price Chopper recently expanded to 75,000 SF.
- Two signalized intersections on 150 Hwy into shopping center.
- Walmart Super Center recently opened to the north.
- Lee's Summit's growth continues to accelerate in the areas surrounding Raintree North Shopping Center.



Adam Lyngar  
adam@cadencekc.com  
913.747.3326

Lindy Beyer  
lindy@cadencekc.com  
913.747.3306

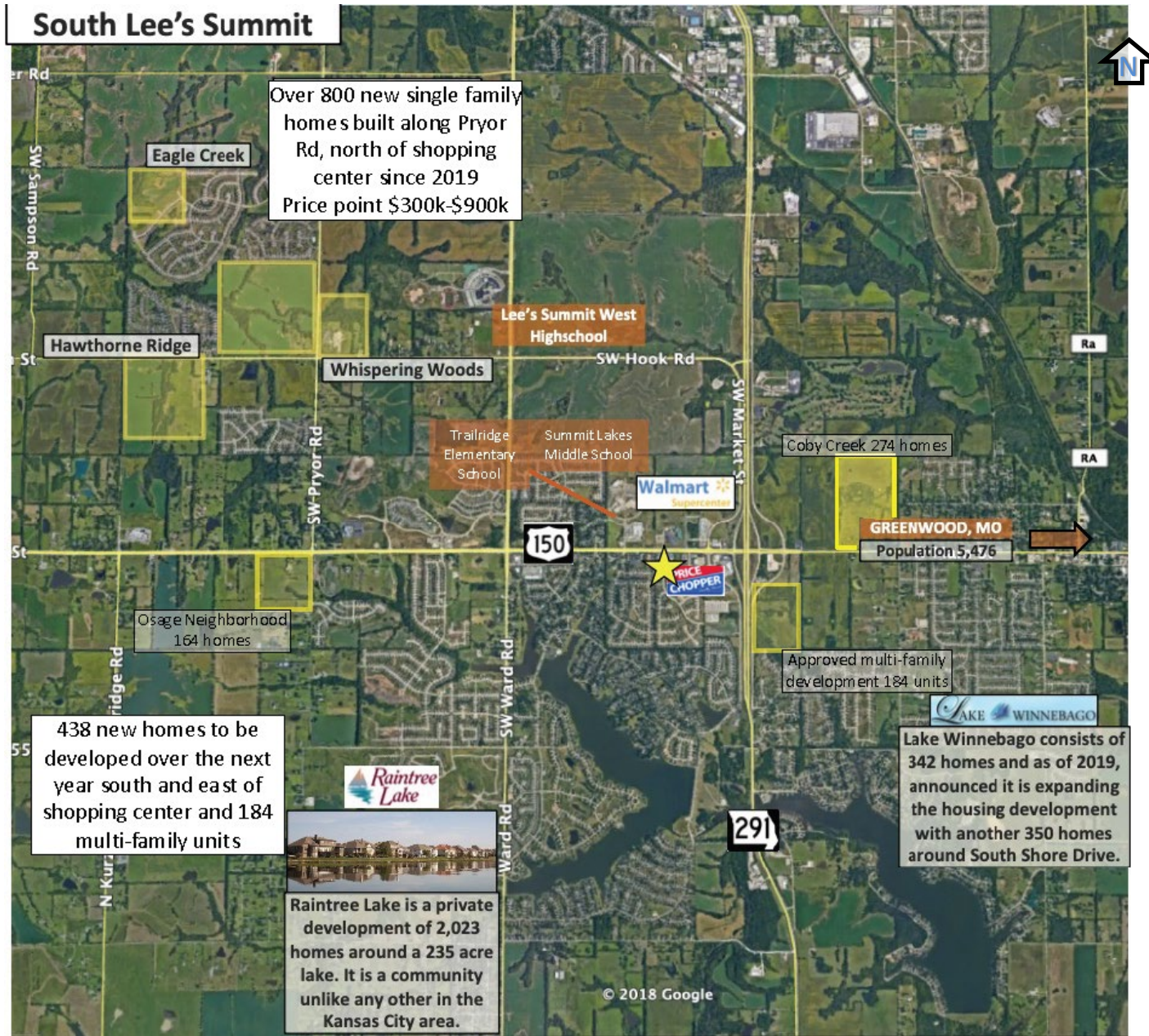
 **CADENCE**  
COMMERCIAL REAL ESTATE



# FOR LEASE

## Raintree North Shopping Center

324 SW Greenwich Drive, Lee's Summit, MO 64082

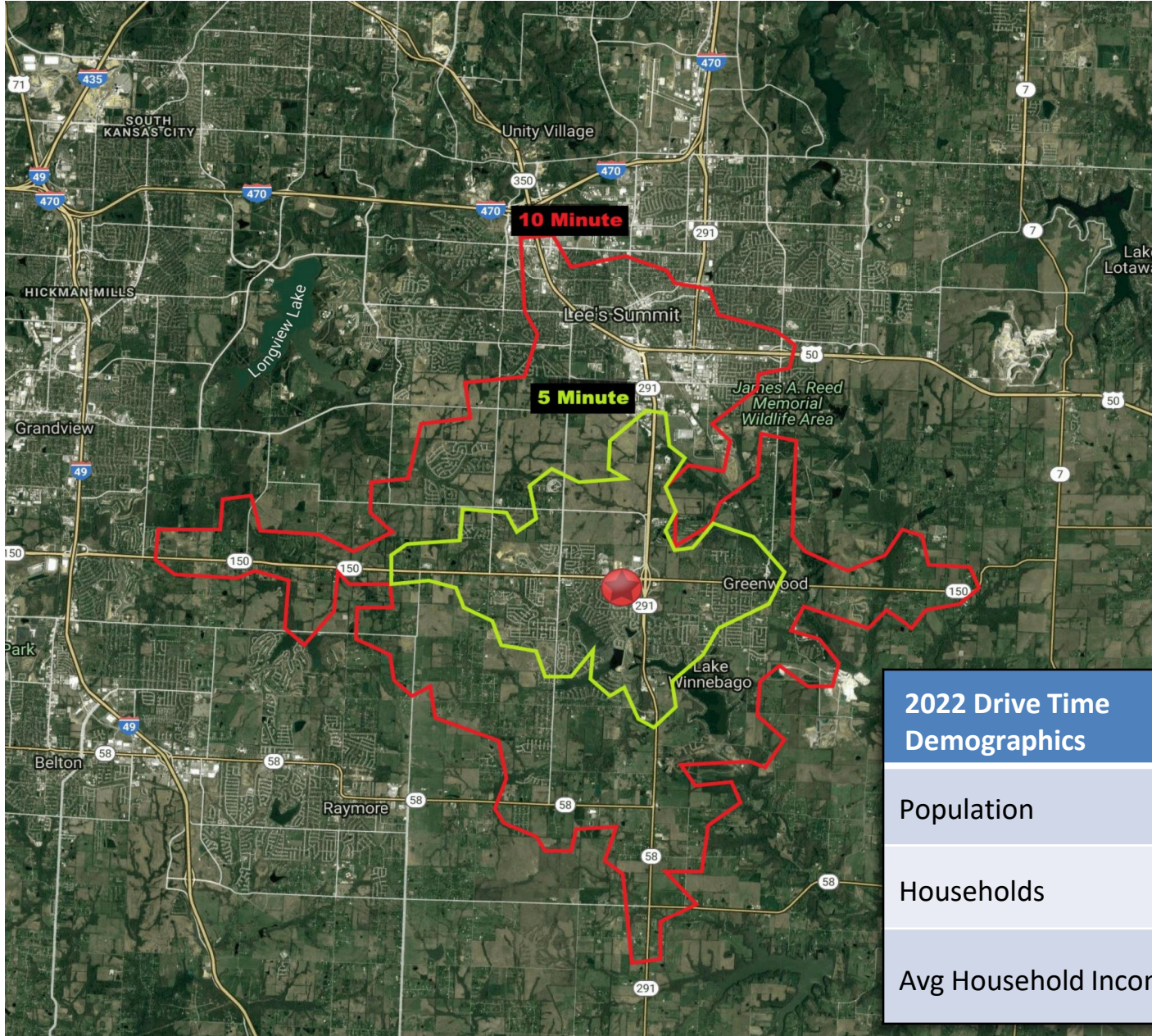




# FOR LEASE

## Raintree North Shopping Center

324 SW Greenwich Drive, Lee's Summit, MO 64082



2022 Drive Time Demographics	5 minute	10 minute
Population	15,936	44,667
Households	5,918	18,068
Avg Household Income	\$110,001	\$94,421



# FOR LEASE

## Raintree North Shopping Center 324 SW Greenwich Drive, Lee's Summit, MO 64082

### 2020 Demographics

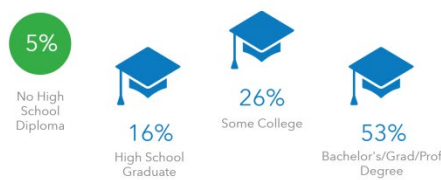
#### 1 Mile

#### 3 Miles

##### KEY FACTS



##### EDUCATION



##### BUSINESS



##### EMPLOYMENT



##### INCOME



##### Households By Income

The largest group: \$100,000 - \$149,999 (36.3%)  
The smallest group: \$15,000 - \$24,999 (3.2%)

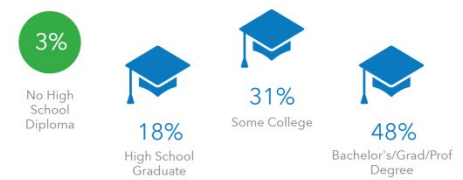
Indicator	Value	Difference
<\$15,000	3.6%	-1.9%
\$15,000 - \$24,999	3.2%	-4.6%
\$25,000 - \$34,999	4.3%	-4.0%
\$35,000 - \$49,999	6.9%	-5.3%
\$50,000 - \$74,999	12.7%	-8.2%
\$75,000 - \$99,999	14.5%	-0.6%
\$100,000 - \$149,999	36.3%	+19.3%
\$150,000 - \$199,999	10.8%	+1.8%
\$200,000+	7.6%	+3.5%

Bars show deviation from Cass County

##### KEY FACTS



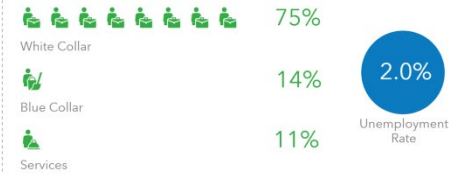
##### EDUCATION



##### BUSINESS



##### EMPLOYMENT



##### INCOME



##### Households By Income

The largest group: \$100,000 - \$149,999 (30.4%)  
The smallest group: <\$15,000 (2.6%)

Indicator	Value	Difference
<\$15,000	2.6%	-2.9%
\$15,000 - \$24,999	3.4%	-4.4%
\$25,000 - \$34,999	5.0%	-3.3%
\$35,000 - \$49,999	7.0%	-5.2%
\$50,000 - \$74,999	14.1%	-6.8%
\$75,000 - \$99,999	14.8%	-0.3%
\$100,000 - \$149,999	30.4%	+13.4%
\$150,000 - \$199,999	12.9%	+3.9%
\$200,000+	9.9%	+5.8%

Bars show deviation from Cass County

Adam Lyngar  
adam@cadencekc.com  
913.747.3326

Lindy Beyer  
Lindy@cadencekc.com  
913.747.3306

