

# Medical Building For Sale on Eastside of Detroit

5830 Conner, Detroit, MI 48213

For Sale



Building: **Former Woodward Blvd. Medical Building**

Size: **6,000 SF Building on 0.6 AC**

Zoning: **R2**

County: **Wayne**

Asking Price: **\$395,000**



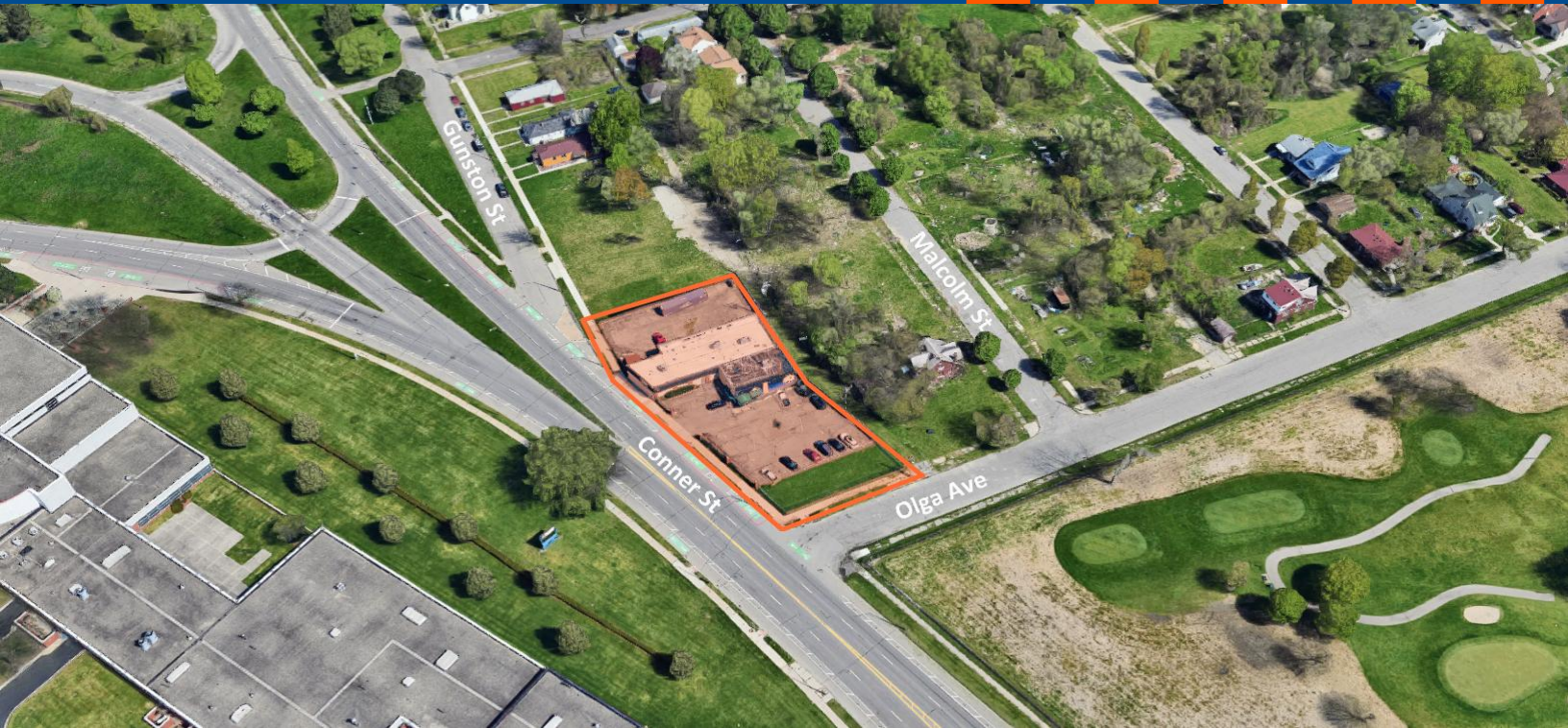
AGENT: **BEN SMITH**  
[smith@summitcommercialllc.com](mailto:smith@summitcommercialllc.com)

For more information:

[www.summitcommercialllc.com](http://www.summitcommercialllc.com)

(313) 872-1300

The information contained herein has been given to us by the owner of the property or other sources we deem reliable. We have no reason to doubt its accuracy, but we do not guarantee it. All information should be verified prior to lease or purchase.



# PROPERTY FEATURES

6,000 SF Medical Office Building

Gated, Secure Parking for approximately 40 cars

Well-maintained Building w/ Secure Reception Area

Ample Private Offices, Conference Rooms and Open Workstation Areas

Newer HVAC and Roof

Close in proximity to I-94 Freeway and CAY International Airport

Immediate Proximity to Wayne County Community College, Chandler Park Golf Course and Samaritan Center

Close in proximity to Lear Corporation, Conner Ave. Detroit Plant and Stellantis Detroit Mack Ave. Assembly Complex



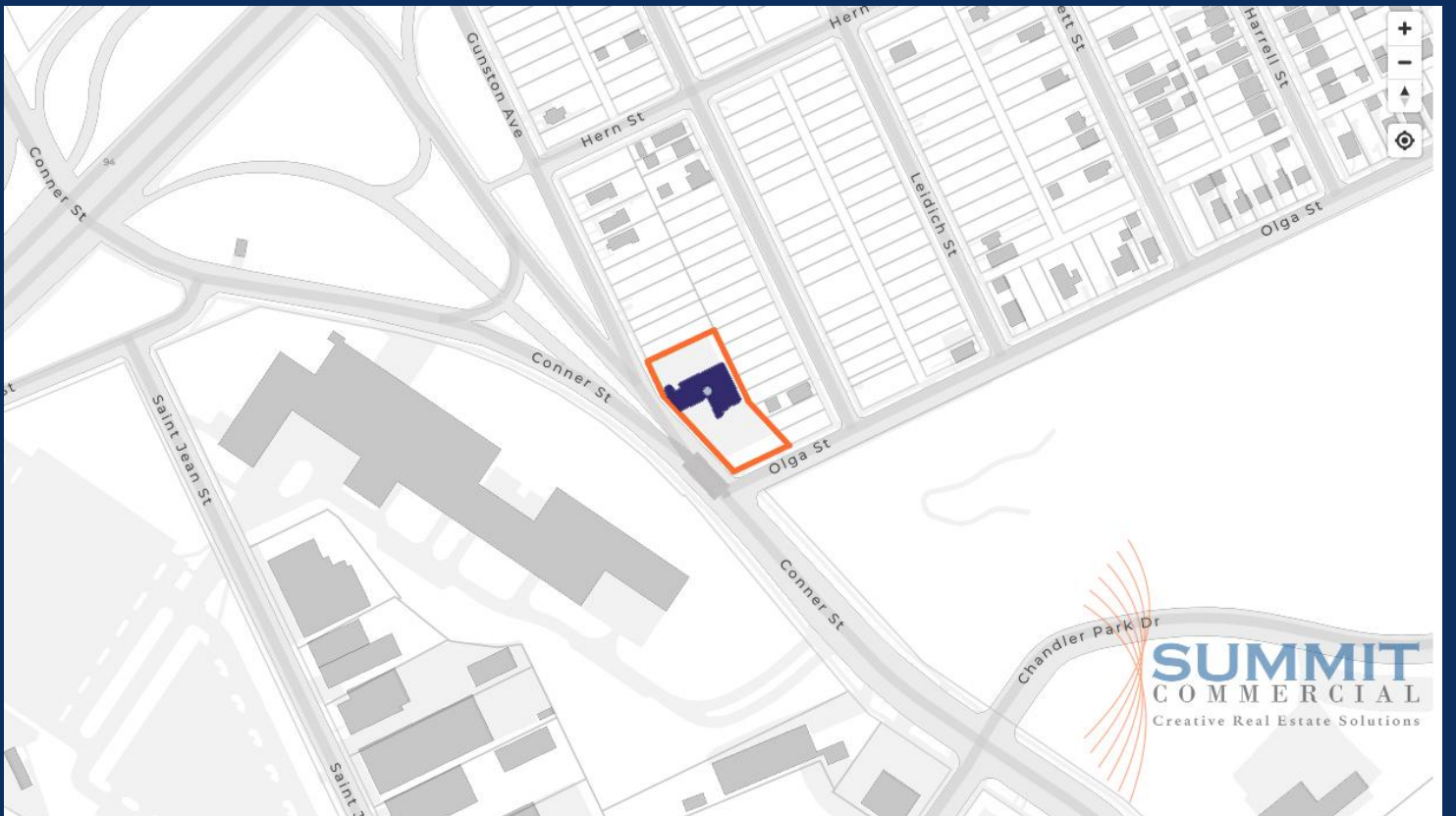
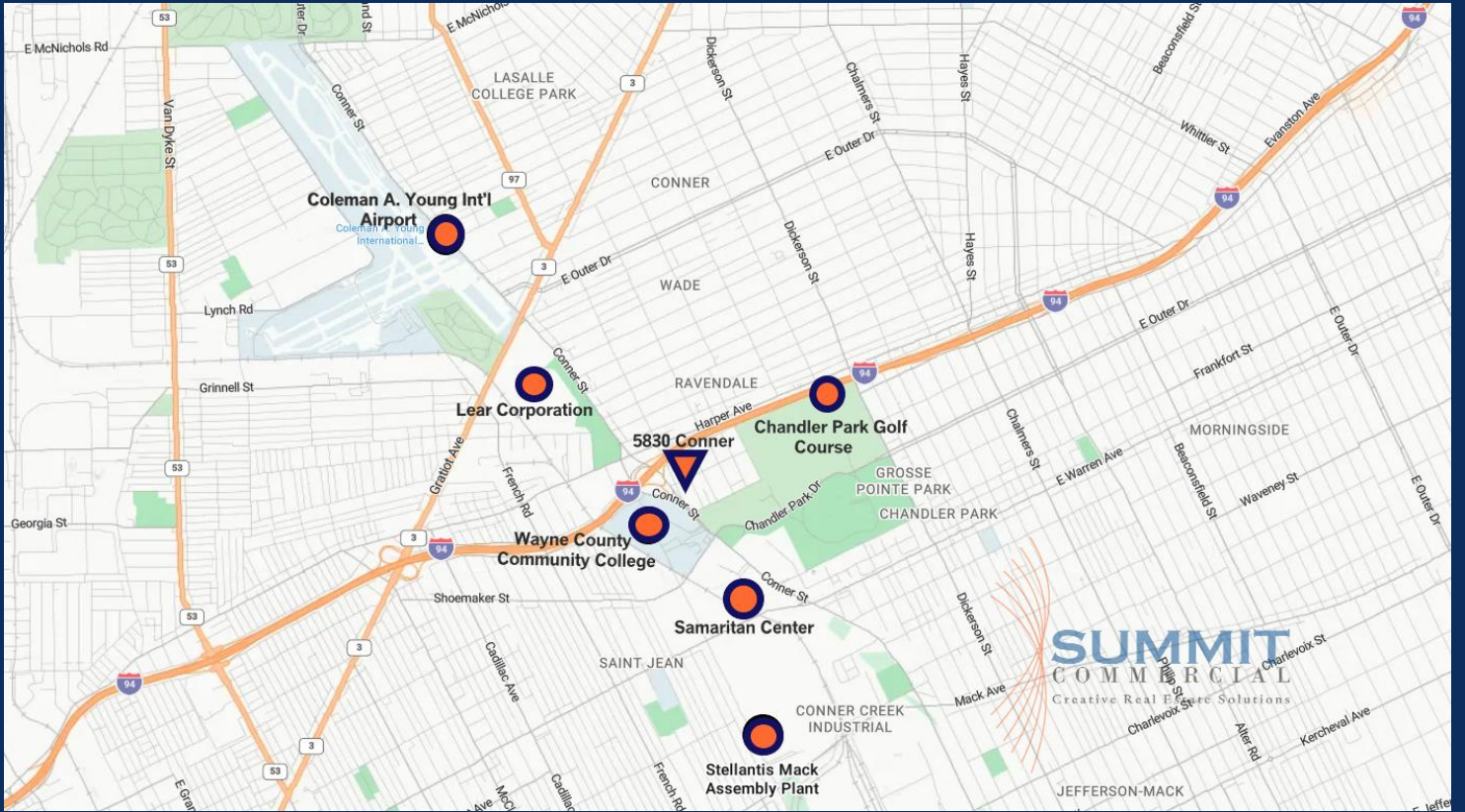
For more information:

[www.summitcommercialllc.com](http://www.summitcommercialllc.com)

(313) 872-1300

The information contained herein has been given to us by the owner of the property or other sources we deem reliable. We have no reason to doubt its accuracy, but we do not guarantee it. All information should be verified prior to lease or purchase.

# LOCATION MAPS



For more information:

[www.summitcommercialllc.com](http://www.summitcommercialllc.com)

(313) 872-1300

The information contained herein has been given to us by the owner of the property or other sources we deem reliable. We have no reason to doubt its accuracy, but we do not guarantee it. All information should be verified prior to lease or purchase.

# PICTURES



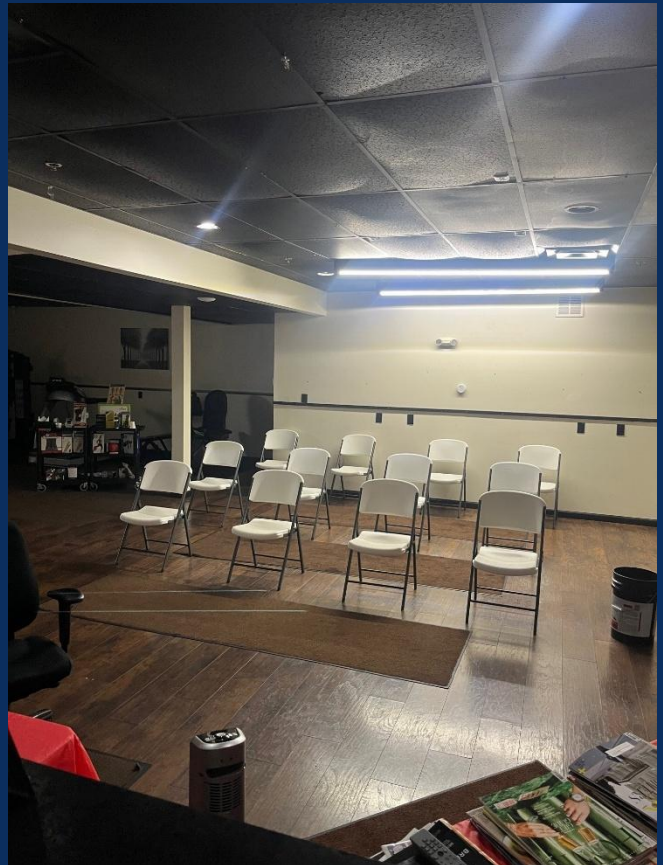
For more information:

[www.summitcommercialllc.com](http://www.summitcommercialllc.com)

(313) 872-1300

The information contained herein has been given to us by the owner of the property or other sources we deem reliable. We have no reason to doubt its accuracy, but we do not guarantee it. All information should be verified prior to lease or purchase.

# PICTURES



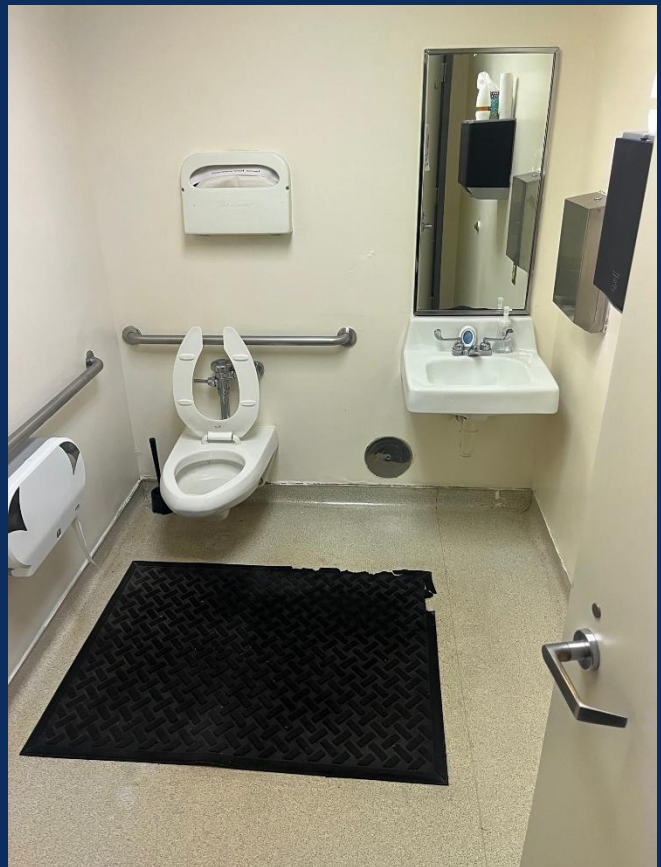
For more information:

[www.summitcommercialllc.com](http://www.summitcommercialllc.com)

(313) 872-1300

The information contained herein has been given to us by the owner of the property or other sources we deem reliable. We have no reason to doubt its accuracy, but we do not guarantee it. All information should be verified prior to lease or purchase.

# PICTURES



For more information:

[www.summitcommercialllc.com](http://www.summitcommercialllc.com)

(313) 872-1300

The information contained herein has been given to us by the owner of the property or other sources we deem reliable. We have no reason to doubt its accuracy, but we do not guarantee it. All information should be verified prior to lease or purchase.