

# Business Real Estate

*Providing Workplace Solutions*

**Business Real Estate, Inc.**  
Licensed Real Estate Brokers  
**825 US Highway One, Suite 340**  
**Jupiter, FL 33477**  
**Phone 561-624-1420**  
**Fax 561-743-1103**



## OFFICE SPACE FOR LEASE

**Jupiter Corporate Center**  
**825 S. US Highway One, Jupiter, FL 33477**

Building size: 21,710 sq ft      Number of floors: 3  
Suite 310 : 1,761 sq ft Suite 330 : 1,542 sq ft  
Parking ratio: 4+ per 1000 sq ft      Year built: 1986  
**Lease rate: \$32.00 psf modified gross**

### Property Description:

This is one of the nicest buildings in the east Jupiter market. Great exposure on US1. Available immediately. Covered parking available.

### Area Description:

Located just south of Indiantown Road on US 1 in Jupiter, Florida. This north county location also has easy access to the West Palm Beach area as well as to the Gardens /Jupiter markets, which is one of the fastest growing areas in Palm Beach County.

**For Additional Information Contact Jack Robson at 561-624-1420**

*This information has been secured from sources we believe to be reliable, but we make no representation or warranties, expressed or implied, as to the accuracy of the information. Interested parties should conduct their own independent investigations and rely only on those results.*

## SUITE 330



*This information has been secured from sources we believe to be reliable, but we make no representation or warranties, expressed or implied, as to the accuracy of the information. Interested parties should conduct their own independent investigations and rely only on those results.*

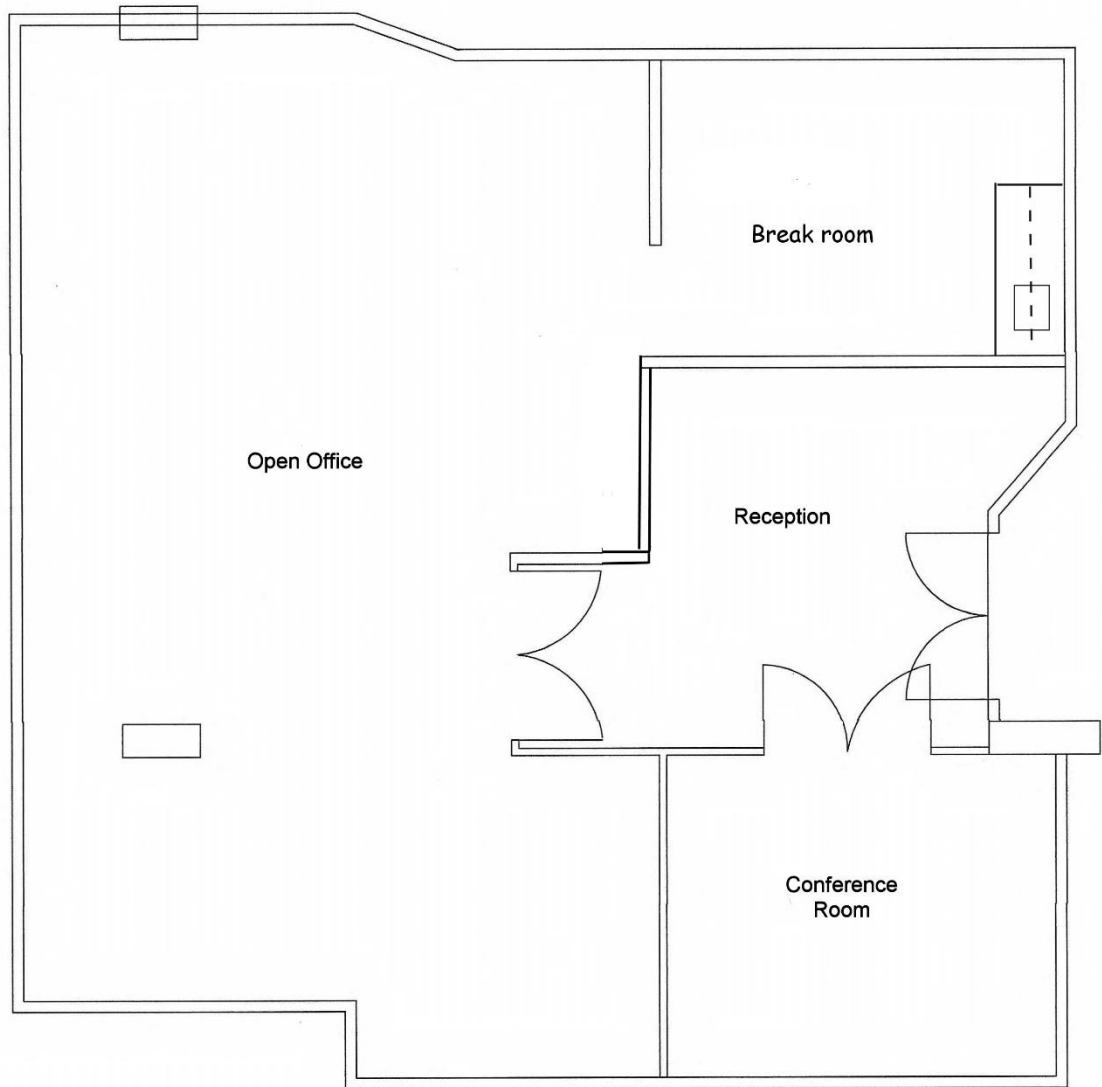


## SUITE 310



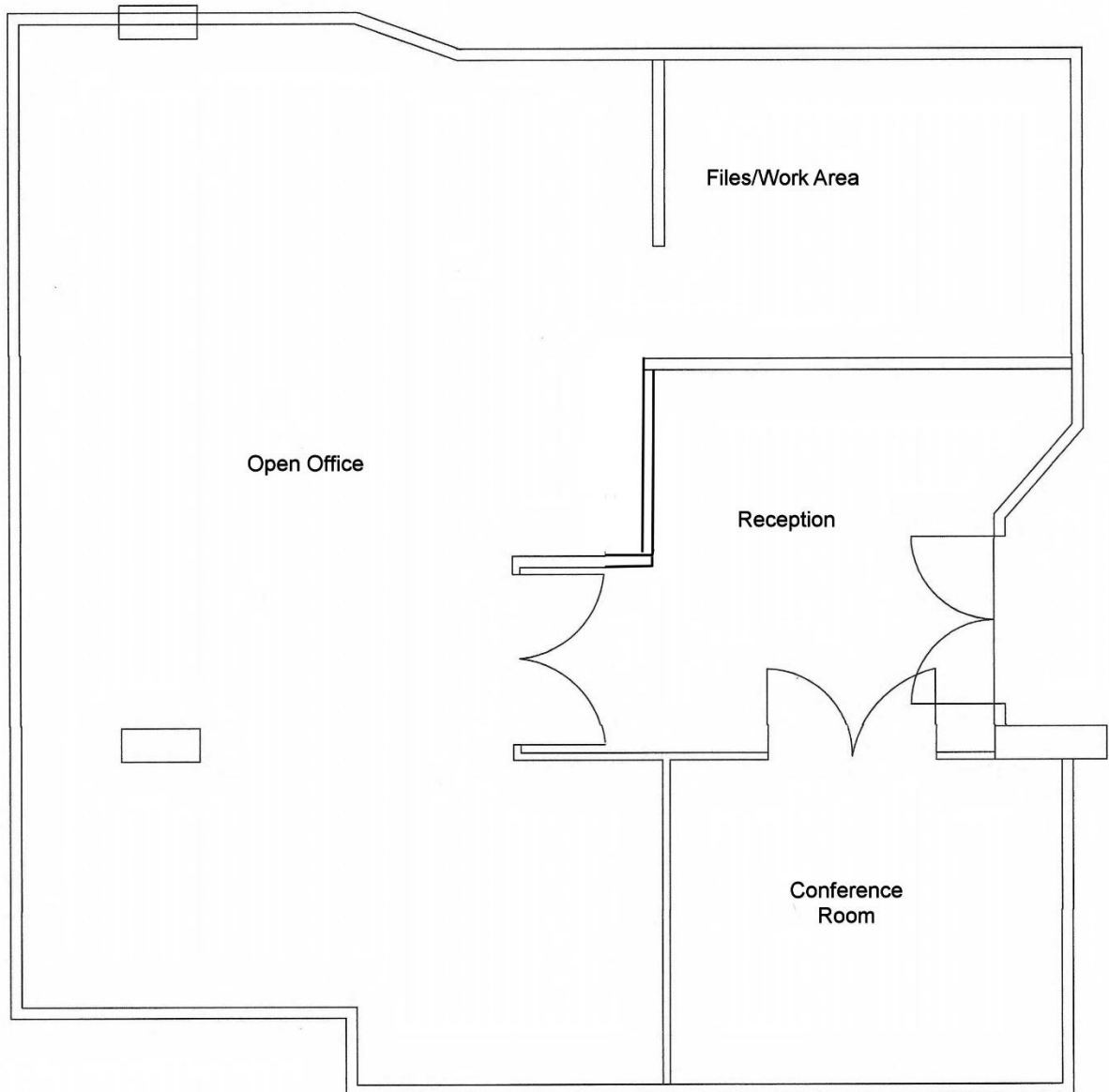
*This information has been secured from sources we believe to be reliable, but we make no representation or warranties, expressed or implied, as to the accuracy of the information. Interested parties should conduct their own independent investigations and rely only on those results.*

Jupiter Corporate Center  
Suite 330  
1,542 sq ft



*This information has been secured from sources we believe to be reliable, but we make no representation or warranties, expressed or implied, as to the accuracy of the information. Interested parties should conduct their own independent investigations and rely only on those results.*

Jupiter Corporate Center  
Suite 330  
1,542 sq ft



*This information has been secured from sources we believe to be reliable, but we make no representation or warranties, expressed or implied, as to the accuracy of the information. Interested parties should conduct their own independent investigations and rely only on those results.*