

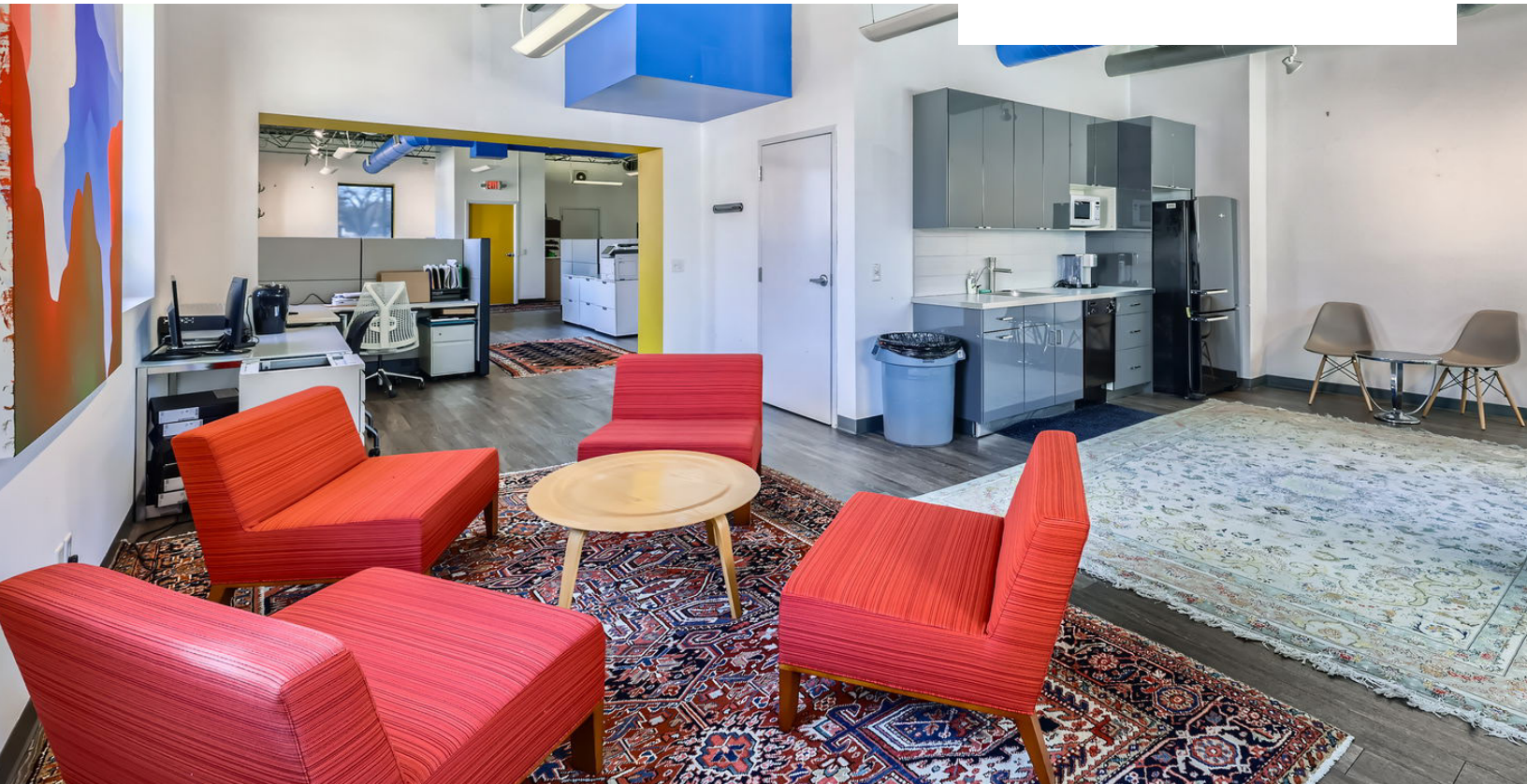
# FOR LEASE OFFICE/WAREHOUSE

225 THOMAS AVE N, MINNEAPOLIS, MN



**MONARCH**

COMMERCIAL REAL ESTATE



**Located in the dynamic Bryn Mawr neighborhood** just west of Downtown Minneapolis, 225 Thomas Ave N offers convenient access to an array of amenities, including breweries, coffee shops, and scenic trails. Just minutes from the North Loop and major freeways (I-394 and Hwy 100), this location is **ideal** for companies seeking a balance of **urban proximity** and **neighborhood charm**. The property is also near Theodore Wirth Park and the Cedar Lake Trail, offering tenants **easy access to outdoor recreation** and bike commuting.

## PROPERTY HIGHLIGHTS:

- **1,857 SF** office available
- Featuring **move-in ready** office finishes
- Select suites can be **delivered furnished**
- Parking Ratio: 4/1000SF weekdays until 3pm & ample street parking

## CONTACT

**KYLE KALIVODA**

DIRECTOR

KYLE@MONARCHCRE.COM

763 242 8127

**BEN JENSEN**

PRINCIPAL

BEN@MONARCHCRE.COM

612 999 5339

**MONARCHCRE.COM**

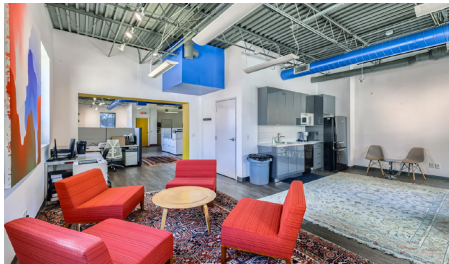
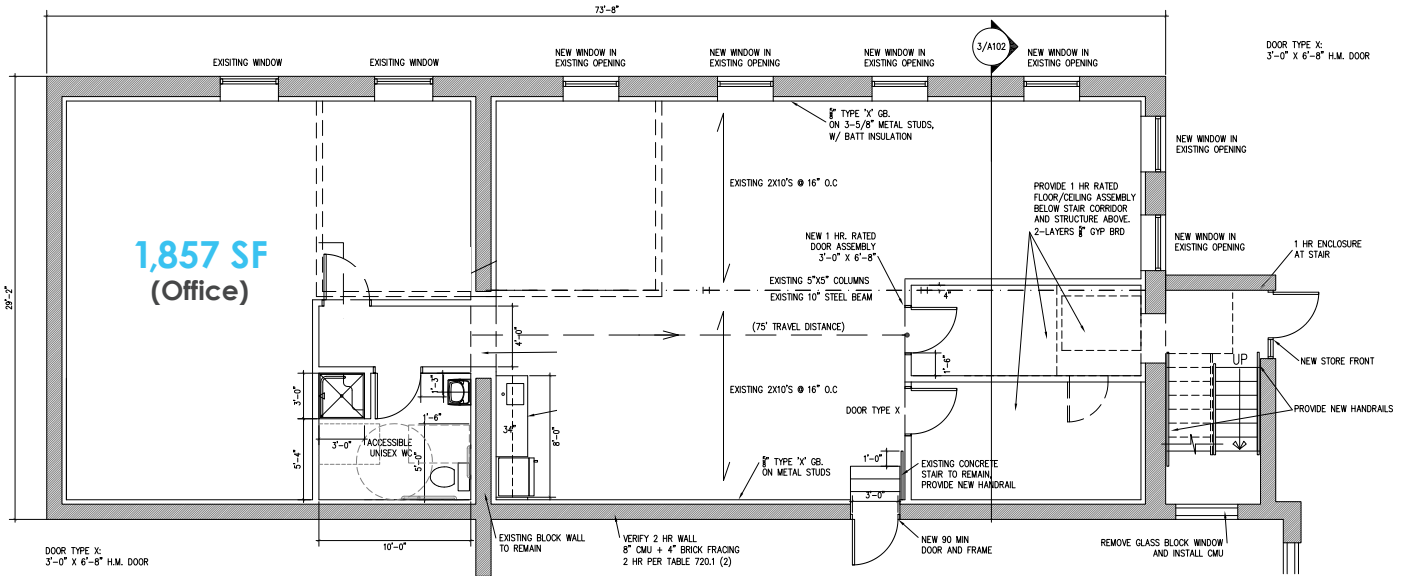
# AERIAL MAP

**KYLE KALIVODA**  
 DIRECTOR  
 KYLE@MONARCHCRE.COM  
 763 242 8127

**BEN JENSEN**  
 PRINCIPAL  
 BEN@MONARCHCRE.COM  
 612 999 5339

# FLOOR PLAN

## Suite A: 1,857 SF office



**KYLE KALIVODA**  
 DIRECTOR  
 KYLE@MONARCHCRE.COM  
 763 242 8127

**BEN JENSEN**  
 PRINCIPAL  
 BEN@MONARCHCRE.COM  
 612 999 5339