



BLACKBOB CORNERS

119th St. & Blackbob Rd. (NEC), Olathe, KS

SPACE FOR LEASE



UP TO 5,859 SF AVAILABLE FOR LEASE

DEMOGRAPHICS

	1 mile	3 miles	5 miles
Estimated Population	10,446	80,918	237,936
Avg. Household Income	\$118,488	\$132,595	\$137,349

- 4,506 SF end cap & 1,363 SF in-line space
- Direct visibility to 119th Street with monument signage
- Positioned within a premier retail corridor featuring Super Target (Top 20% nationally), AMC Theaters (Top 15% nationally), Dick's Sporting Goods, Whole Foods, QuikTrip and more than 1 million square feet of surrounding retail.
- Center contains the highest-trafficked Olive Garden location in the state of Kansas, averaging 32,348 monthly visits per Alpha Maps
- \$287.6 Million a year in total retail spending (1 mile radius)

[CLICK HERE TO VIEW MORE LISTING INFORMATION](#)

For More Information Contact: *Exclusive Agents*
PAUL MASSALI | 816.412.7409 | pmassali@blockandco.com
WILL SANDERS | 816.412.7311 | wsanders@blockandco.com





BLACKBOB CORNERS

119th St. & Blackbob Rd. (NEC), Olathe, KS

LAST AVAILABLE
IN-LINE SPACE
FOR LEASE

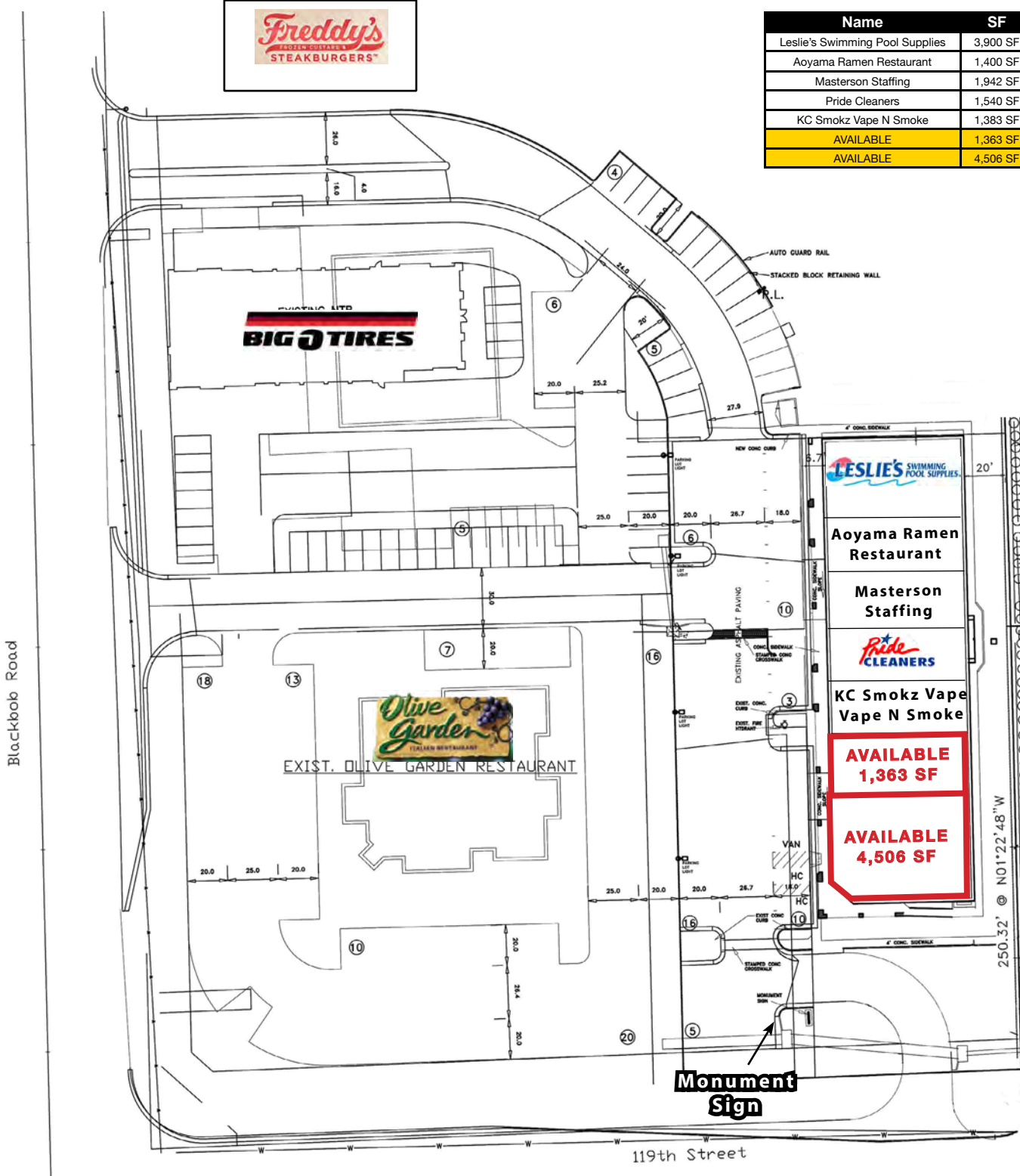
AERIAL



SITE PLAN



Name	SF	Address
Leslie's Swimming Pool Supplies	3,900 SF	14970 W 119th St.
Aoyama Ramen Restaurant	1,400 SF	14960 W 119th St.
Masterson Staffing	1,942 SF	14950 W 119th St.
Pride Cleaners	1,540 SF	14940 W 119th St.
KC Smokz Vape N Smoke	1,383 SF	14930 W 119th St.
AVAILABLE	1,363 SF	14920 W 119th St.
AVAILABLE	4,506 SF	14910 W 119th St.

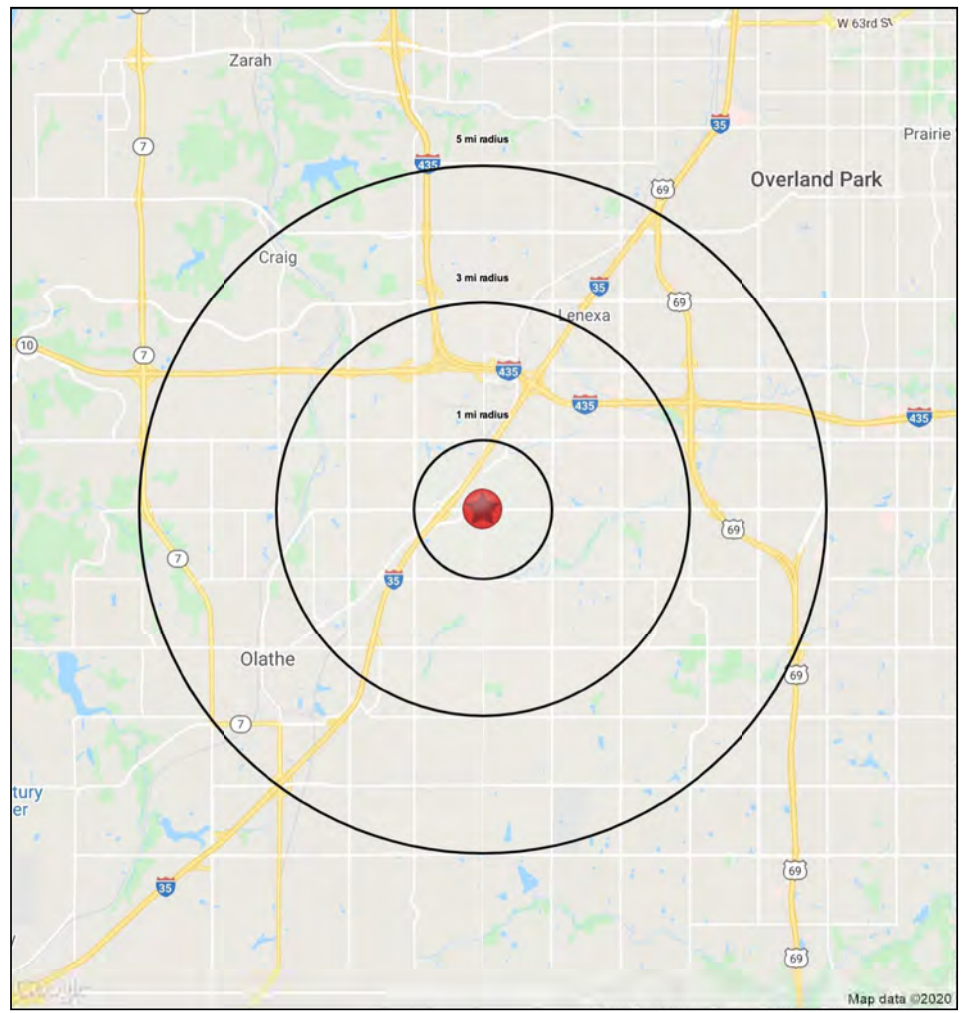
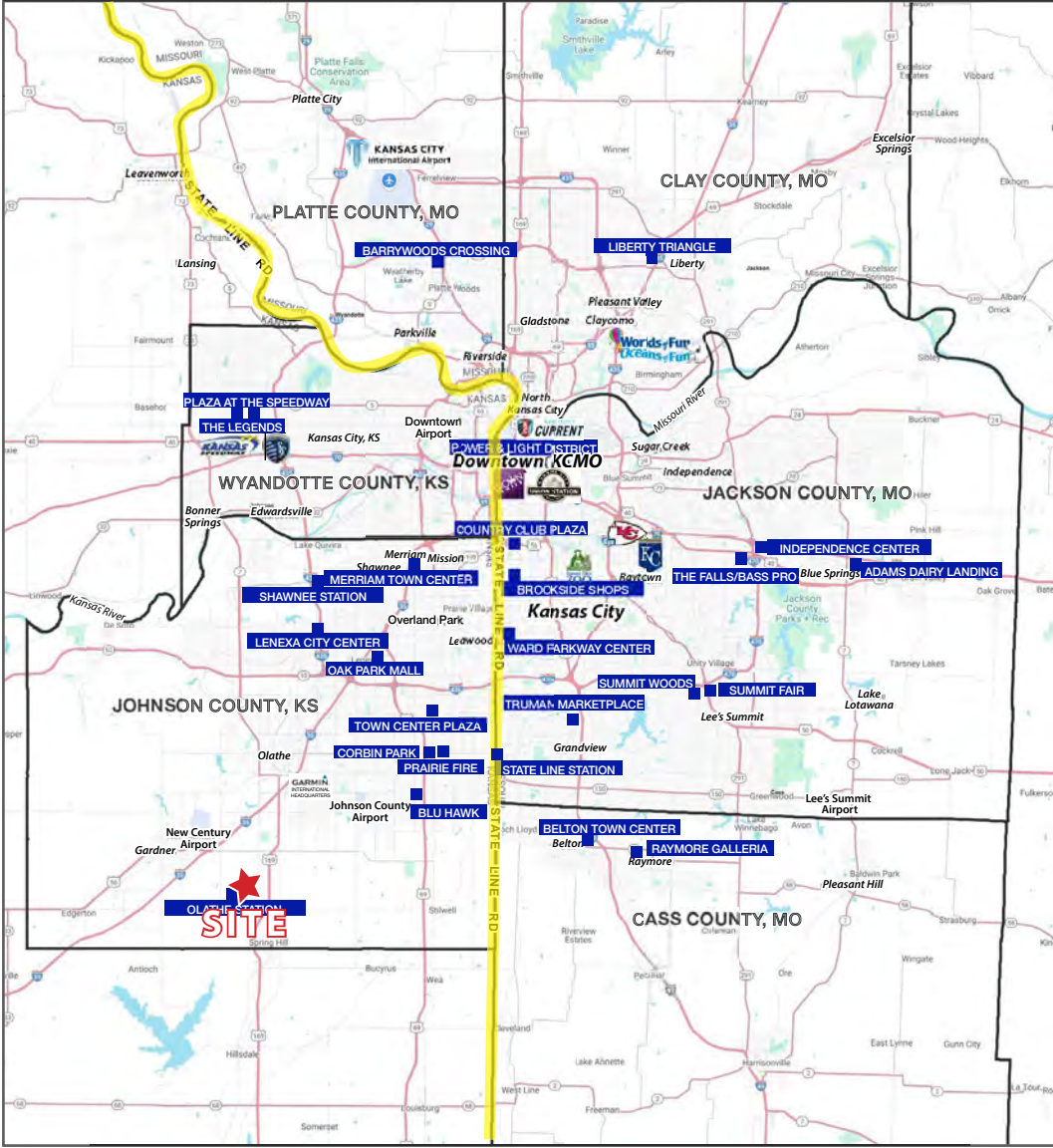




BLACKBOB CORNERS

119th St. & Blackbob Rd. (NEC), Olathe, KS

LAST AVAILABLE IN-LINE SPACE FOR LEASE





BLACKBOB CORNERS

119th St. & Blackbob Rd. (NEC), Olathe, KS

SPACE FOR LEASE

119th Street & Blackbob Road Olathe, Kansas	1 mi radius	3 mi radius	5 mi radius
Population			
2024 Estimated Population	10,446	80,918	237,936
2029 Projected Population	11,014	83,967	242,564
2020 Census Population	9,955	81,762	236,109
2010 Census Population	9,528	74,651	217,916
Projected Annual Growth 2024 to 2029	1.1%	0.8%	0.4%
Historical Annual Growth 2010 to 2024	0.7%	0.6%	0.7%
2024 Median Age	36.6	37.3	37.6
Households			
2024 Estimated Households	4,647	33,732	96,319
2029 Projected Households	4,900	35,487	99,426
2020 Census Households	4,372	32,206	92,299
2010 Census Households	4,075	29,218	83,808
Projected Annual Growth 2024 to 2029	1.1%	1.0%	0.6%
Historical Annual Growth 2010 to 2024	1.0%	1.1%	1.1%
Race and Ethnicity			
2024 Estimated White	77.7%	76.7%	77.4%
2024 Estimated Black or African American	7.4%	7.1%	6.5%
2024 Estimated Asian or Pacific Islander	5.9%	6.2%	6.4%
2024 Estimated American Indian or Native Alaskan	0.3%	0.3%	0.3%
2024 Estimated Other Races	8.7%	9.7%	9.4%
2024 Estimated Hispanic	8.8%	9.9%	9.5%
Income			
2024 Estimated Average Household Income	\$118,488	\$132,595	\$137,349
2024 Estimated Median Household Income	\$96,087	\$106,107	\$109,414
2024 Estimated Per Capita Income	\$52,818	\$55,398	\$55,684
Education (Age 25+)			
2024 Estimated Elementary (Grade Level 0 to 8)	1.8%	1.5%	1.4%
2024 Estimated Some High School (Grade Level 9 to 11)	2.3%	1.9%	2.0%
2024 Estimated High School Graduate	14.7%	14.9%	14.0%
2024 Estimated Some College	18.9%	19.4%	18.5%
2024 Estimated Associates Degree Only	9.7%	7.3%	7.7%
2024 Estimated Bachelors Degree Only	31.5%	34.3%	34.5%
2024 Estimated Graduate Degree	21.1%	20.7%	21.9%
Business			
2024 Estimated Total Businesses	555	3,599	9,116
2024 Estimated Total Employees	9,800	67,519	149,133
2024 Estimated Employee Population per Business	17.6	18.8	16.4
2024 Estimated Residential Population per Business	18.8	22.5	26.1

©2024, Sites USA, Chandler, Arizona, 480-491-1112 Demographic Source: Applied Geographic Solutions 5/2024, TIGER Geography - RS1

