

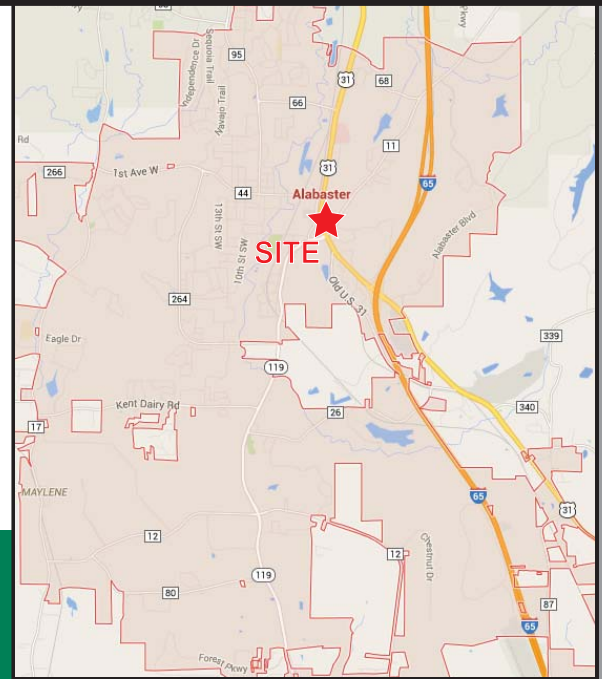
HWY 31 & HWY 119 ♦ Alabaster, Alabama 35007



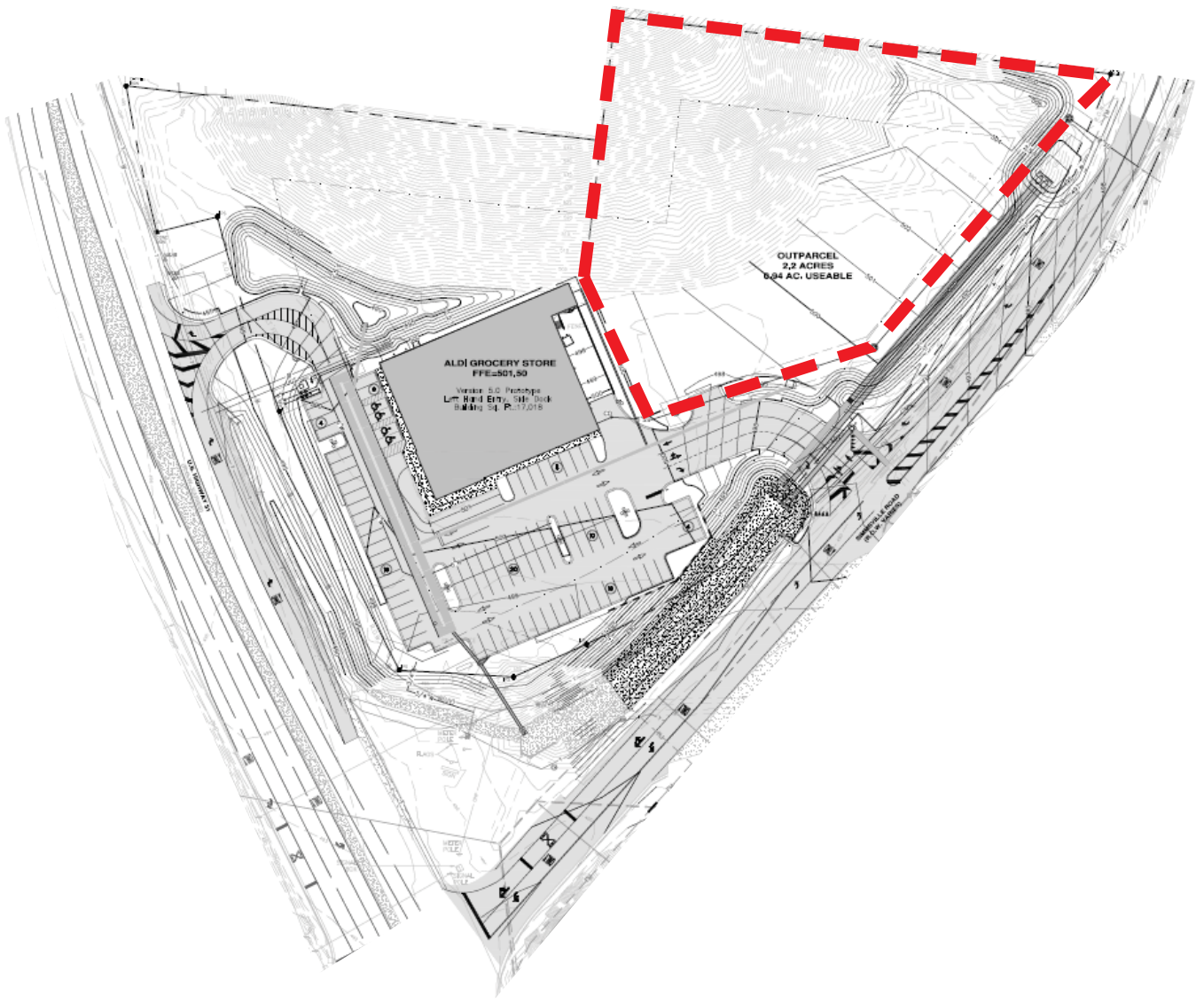
Property Information

- Size: +/- .94 Usable Acres
- Adjacent to new Aldi Foods. Site is rough graded with off site detention and utilities.
- Traffic Counts: 35,600 (Hwy 31)/ 25,170 (Hwy 119)
- Demographics:

	1 mile	3 mile	5 mile
Population	3,288	32,484	60,715
Avg HH Income	\$56,875	\$70,736	\$72,692



SURVEY



AERIAL

