



FOR LEASE

# 885 Oak Grove Ave - Small Office Suites

Menlo Park, California

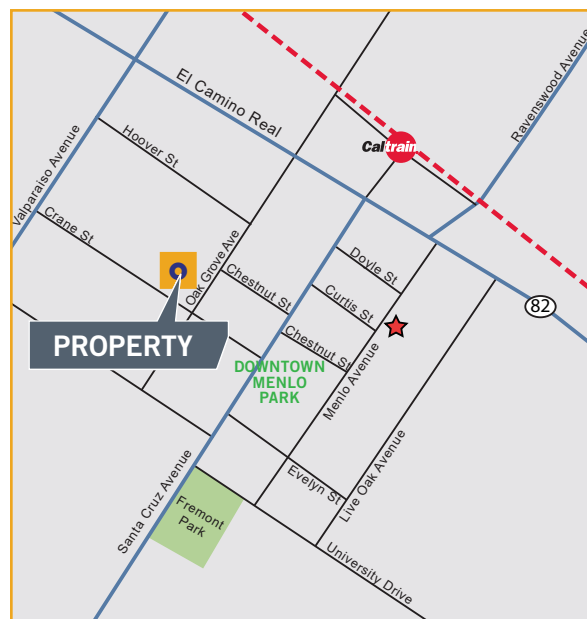
CLASS A BUILDING – DOWNTOWN MENLO PARK

FOR LEASE



## Property Highlights

- Suite 102-1, 2 and 3; 778 RSF  
– \$4,200 per month  
Available July 1, 2023.
- Suite 209; 348 RSF  
– \$1,385 per month  
Available May 1, 2023.
- Suite 304-1; 329 RSF  
– \$1,250 per month  
Available August 1, 2023.
- Abundant Parking  
– City Lot and Street
- Elevator Served
- Award-Winning Architecture
- Call to Tour



**Sam Wright**  
Executive Director  
+1 650 575 3556  
sam.wright@stetsonearhart.com  
CA-DRE License 01061071

530 Lytton Avenue, 2nd Floor  
Palo Alto, California 94301  
main +1 650 651 3690  
stetsonearhart.com

All rights reserved. The information contained in this communication is strictly confidential. This information has been obtained from sources believed to be reliable but has not been verified. No warranty or representation, express or implied, is made as to the condition of the property (or properties) referenced herein or as to the accuracy or completeness of the information contained herein, and same is submitted subject to errors, omissions, change of price, rental or other conditions, withdrawal without notice, and to any special listing conditions imposed by the property owner(s). Any projections, opinions or estimates are subject to uncertainty and do not signify current or future property performance.



FOR LEASE

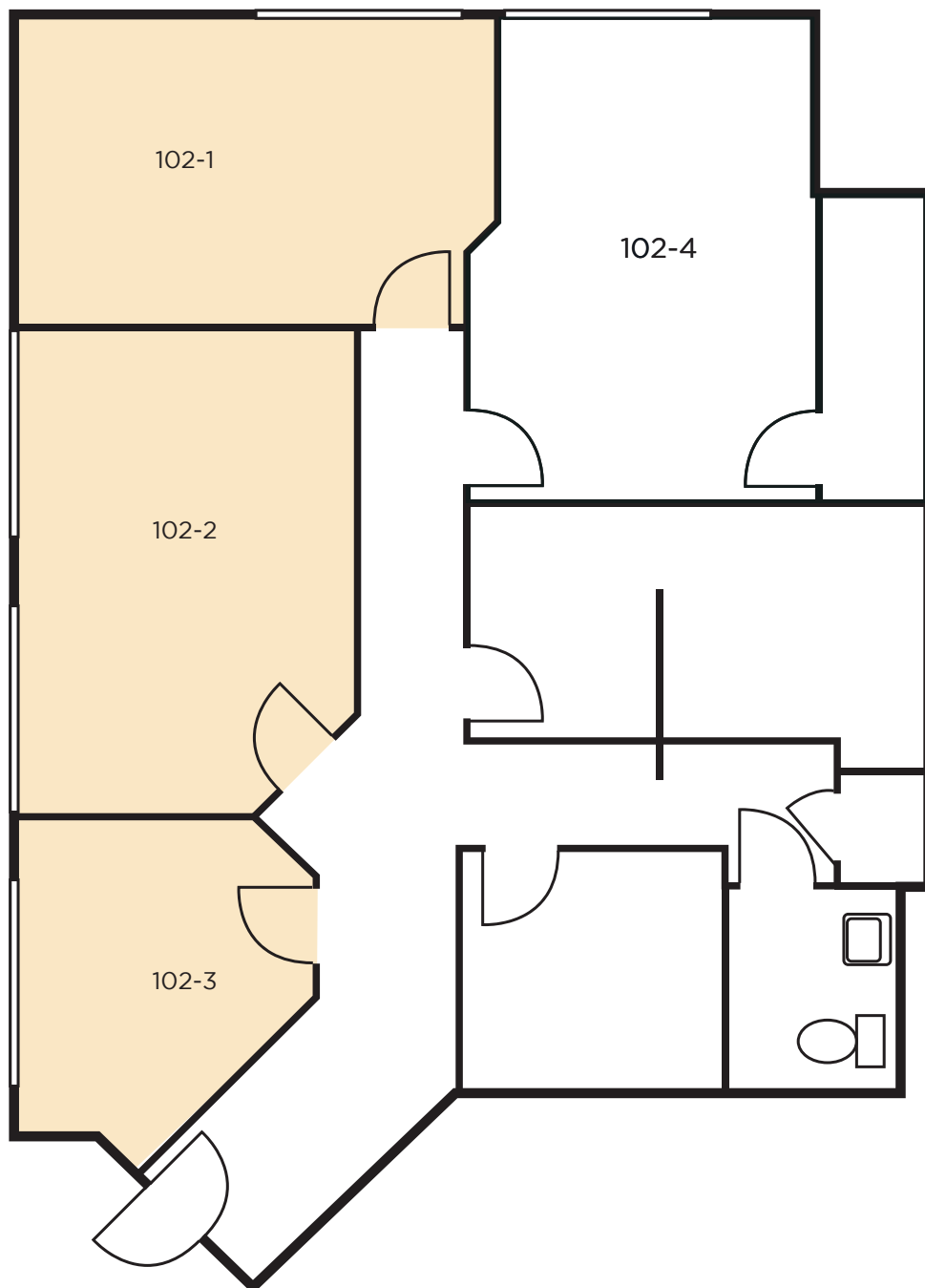
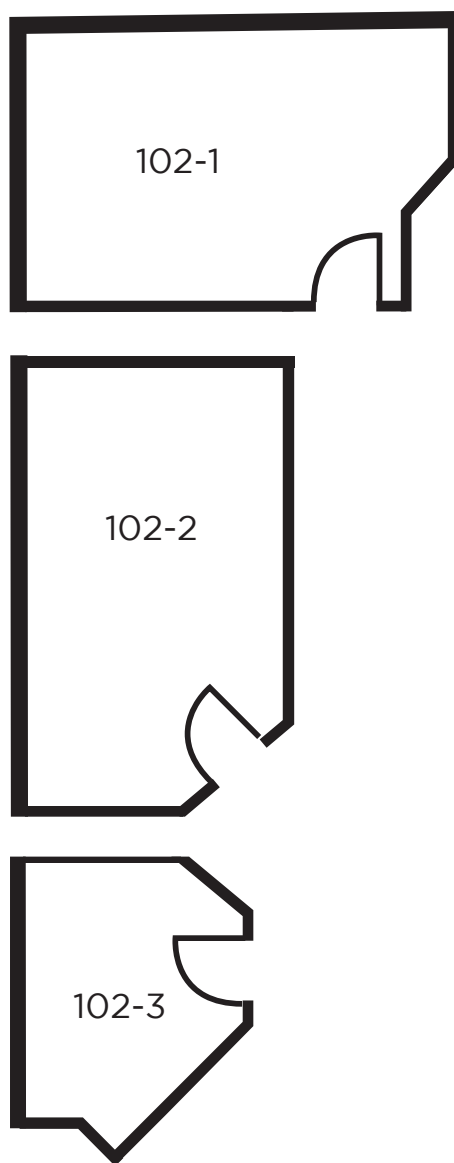
# 885 Oak Grove Ave, Suites 102-1 Menlo Park, California 102-2 and 102-3

## Floor Plan

### First Floor

Suite 102-1, 2 and 3;

± 603 USF/778 RSF



Floor plan not to scale

**Sam Wright**  
Executive Director  
+1 650 575 3556  
sam.wright@stetsonearhart.com  
CA-DRE License 01061071

530 Lytton Avenue, 2nd Floor  
Palo Alto, California 94301  
main +1 650 651 3690  
stetsonearhart.com

All rights reserved. The information contained in this communication is strictly confidential. This information has been obtained from sources believed to be reliable but has not been verified. No warranty or representation, express or implied, is made as to the condition of the property (or properties) referenced herein or as to the accuracy or completeness of the information contained herein, and same is submitted subject to errors, omissions, change of price, rental or other conditions, withdrawal without notice, and to any special listing conditions imposed by the property owner(s). Any projections, opinions or estimates are subject to uncertainty and do not signify current or future property performance.



FOR LEASE

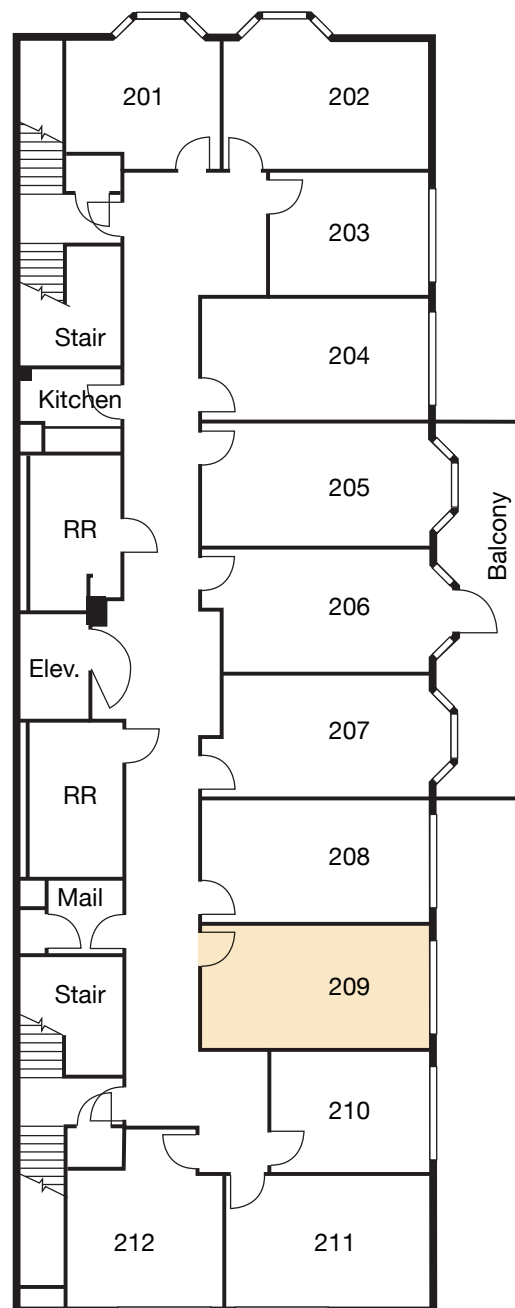
# 885 Oak Grove Ave, Suite 209

Menlo Park, California

## Floor Plan

### Second Floor

Suite 209 ± 213 USF/348 RSF



Floor plan not to scale

**Sam Wright**  
Executive Director  
+1 650 575 3556  
[sam.wright@stetsonnearhart.com](mailto:sam.wright@stetsonnearhart.com)  
CA-DRE License 01061071

530 Lytton Avenue, 2nd Floor  
Palo Alto, California 94301  
main +1 650 651 3690  
[stetsonnearhart.com](http://stetsonnearhart.com)

All rights reserved. The information contained in this communication is strictly confidential. This information has been obtained from sources believed to be reliable but has not been verified. No warranty or representation, express or implied, is made as to the condition of the property (or properties) referenced herein or as to the accuracy or completeness of the information contained herein, and same is submitted subject to errors, omissions, change of price, rental or other conditions, withdrawal without notice, and to any special listing conditions imposed by the property owner(s). Any projections, opinions or estimates are subject to uncertainty and do not signify current or future property performance.



FOR LEASE

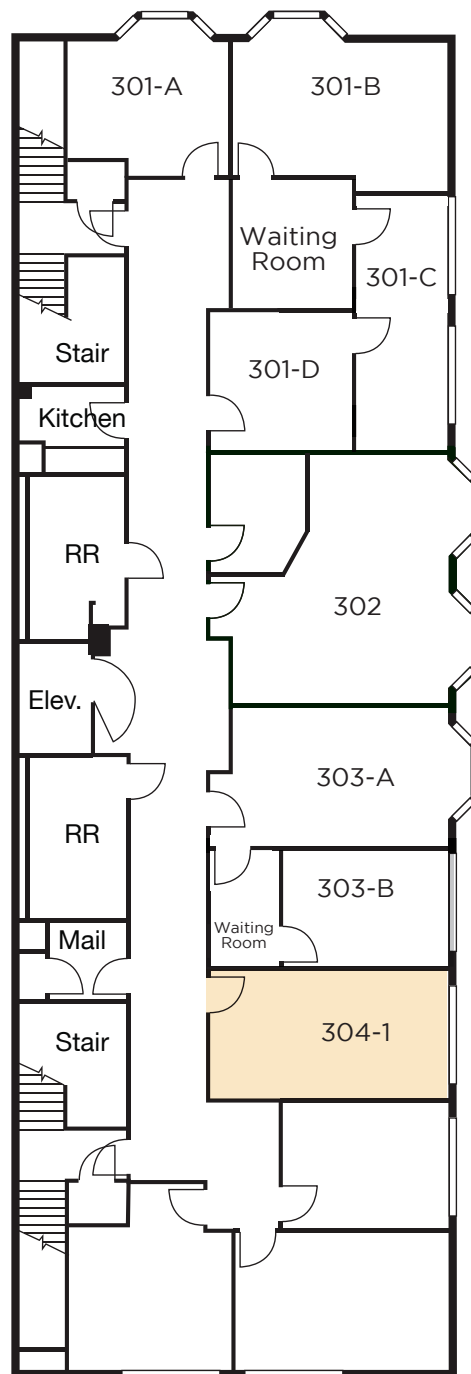
# 885 Oak Grove Ave, Suite 304-1

Menlo Park, California

## Floor Plan

### Third Floor

Suite 304-1  $\pm$  212 USF/329 RSF



Floor plan not to scale

**Sam Wright**  
Executive Director  
+1 650 575 3556  
[sam.wright@stetsonearhart.com](mailto:sam.wright@stetsonearhart.com)  
Lic# 01061071

530 Lytton Avenue, 2nd Floor  
Palo Alto, California 94301  
main +1 650 651 3690  
[stetsonearhart.com](http://stetsonearhart.com)

All rights reserved. The information contained in this communication is strictly confidential. This information has been obtained from sources believed to be reliable but has not been verified. No warranty or representation, express or implied, is made as to the condition of the property (or properties) referenced herein or as to the accuracy or completeness of the information contained herein, and same is submitted subject to errors, omissions, change of price, rental or other conditions, withdrawal without notice, and to any special listing conditions imposed by the property owner(s). Any projections, opinions or estimates are subject to uncertainty and do not signify current or future property performance.