



Available For Lease or Sale

760 SAN RAMON VALLEY BLVD, DANVILLE, CA

Available

SUITE 105: ±1,200 SF • **SUITE 100:** ±1,300 SF • **SUITE 200:** ±1,200 SF

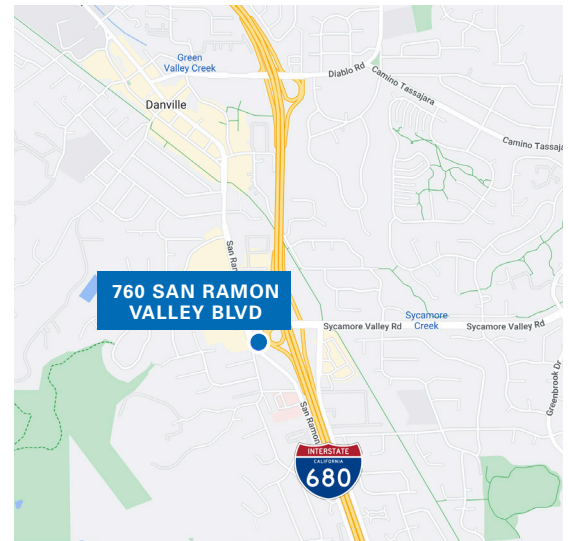
Listing Data:

- Ideal location near retail amenities and access to I-680 via Sycamore Valley Rd.
- Medical uses permitted without additional permitting.
- Above average parking at 5:1000.
- Exterior monument signage available.
- Flexible lease terms.
- Local ownership.

Price:

For Lease: \$2.95 PSF, MG

For Sale: Call Brokers for Pricing



For information, please contact:

Will Ballowe

Director

t 925-389-2499

will.ballowe@nrmk.com

CA RE# 02053125

Blake Dicus

Principal

t 925-737-4144

bdicus@lee-associates.com

CA RE# 02074870

nrmk.com

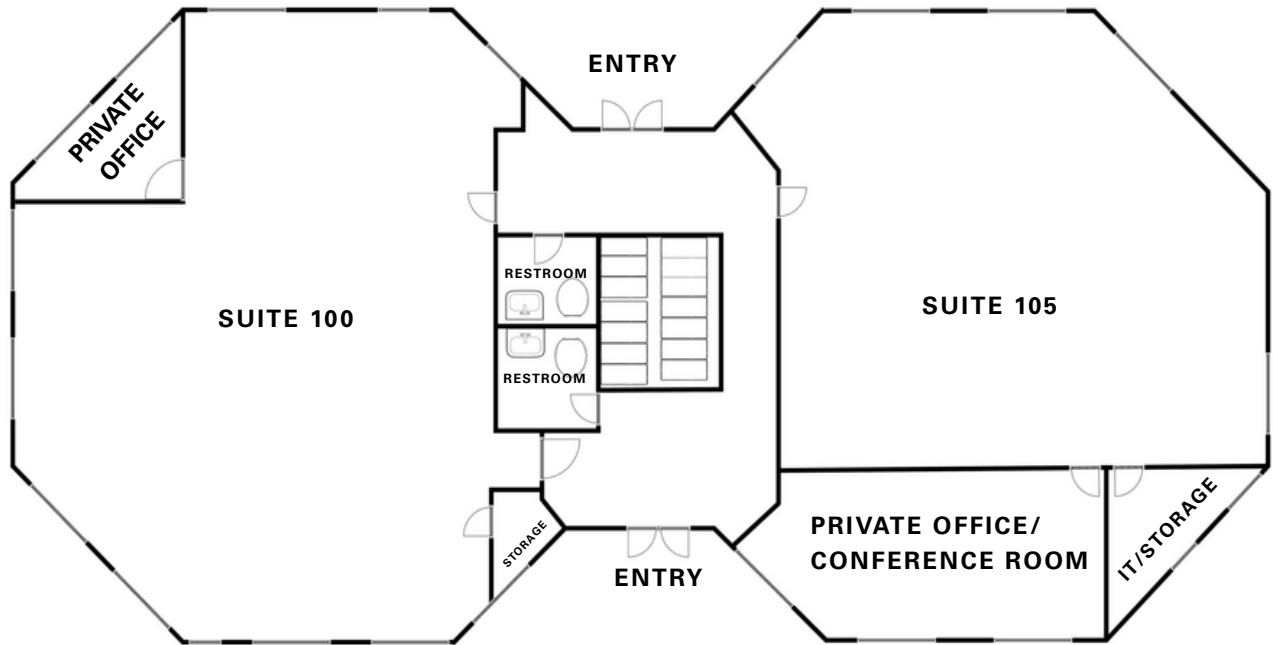
NEWMARK

**LEE &
ASSOCIATES**

FIRST FLOOR

760 SAN RAMON VALLEY BLVD SUITE 105: ±1,200 SF

760 SAN RAMON VALLEY BLVD SUITE 100: ±1,300 SF



Call Brokers For Touring Info:

Will Ballowe

Director

t 925-389-2499

will.ballowe@nmrk.com

CA RE# 02053125

Blake Dicus

Principal

t 925-737-4144

bdicus@lee-associates.com

CA RE# 02074870

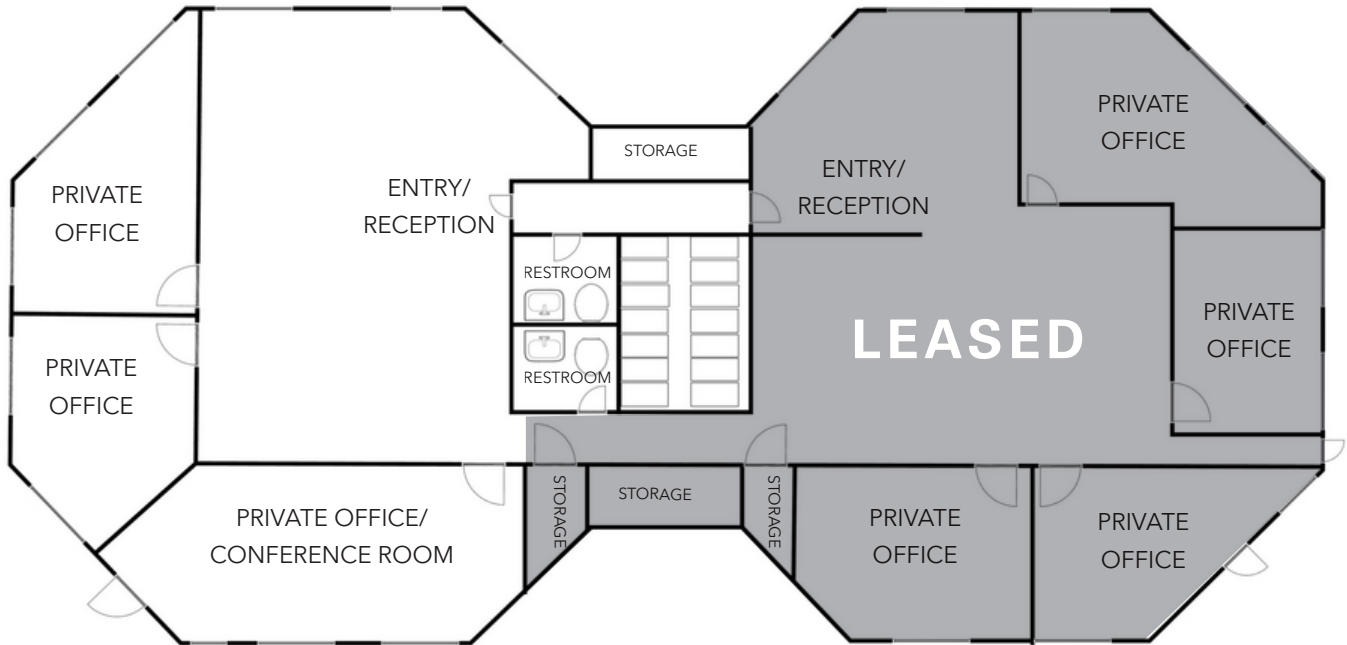
nmrk.com

NEWMARK

LEE & ASSOCIATES

SECOND FLOOR

760 SAN RAMON VALLEY BLVD., SUITE 200: ±1,200 SF



Call Brokers For Touring Info:

Will Ballowe

Director

t 925-389-2499

will.ballowe@nrmk.com

CA RE# 02053125

Blake Dicus

Principal

t 925-737-4144

bdicus@lee-associates.com

CA RE# 02074870

nrmk.com