

Truck Maintenance & Trailer Parking Now Available For Sale



11,185 Sq. Ft. On 5.5 Acres



1201 W. Washington West Chicago IL 60185

Brad Bullington: 630-674-6989 brad@gcrealtyinc.com

Bryan Sonn: 847-207-2108 bryan@gcrealtyinc.com

GC Realty & Development LLC 219 E. Irving Pk. Rd. Roselle IL 60172

All information deemed accurate but not guaranteed.

Bradbullington.com

For Sale: \$4,500,000



PROPERTY INFORMATION

- ◆ Building Size: 11,185 SF
- ◆ Land Area: 239,580 SF
- ◆ Office Size: 1,385 SF
- ◆ Clear Height: 15 FT
- ◆ Loading: 5 Drive In's
- ◆ Power: 400 Amps
- ◆ Parking: 35 Cars
100+ Trucks
- ◆ Year Built: 1972
- ◆ Taxes: \$32,530
- ◆ Zoning: M

PROPERTY SUMMARY

5.5 Acre trucking facility for sale with full concrete surface area. 9,800 SF Shop area with 5 overhead doors and room for several work stations and parts area. Office building has modern finishes, ideal for office use and dispatch. Site can accommodate 100+ trailers.



Brad Bullington

630-674-6989

brad@gcrealtyinc.com

Bryan Sonn

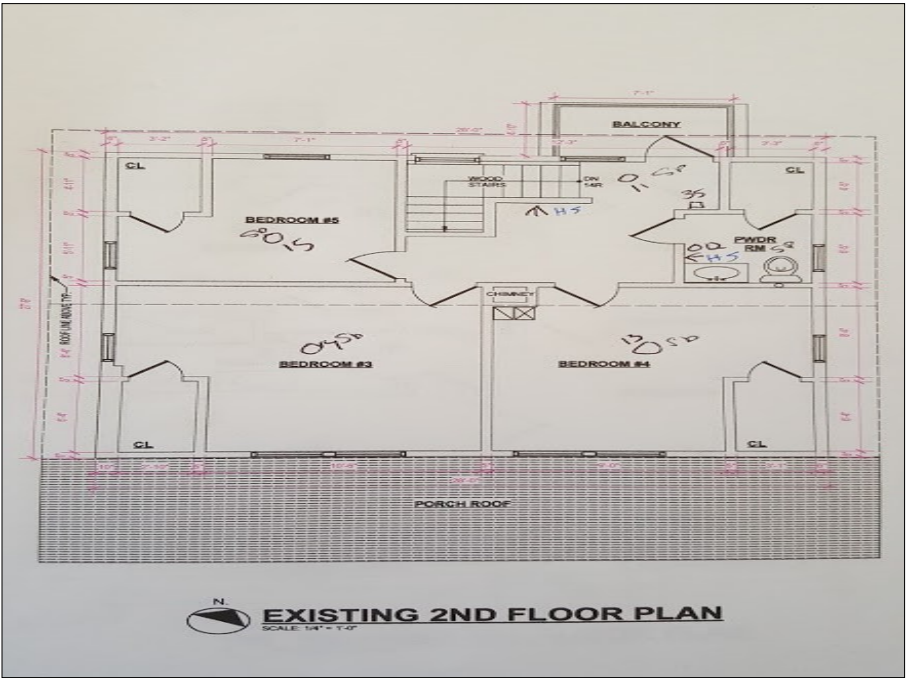
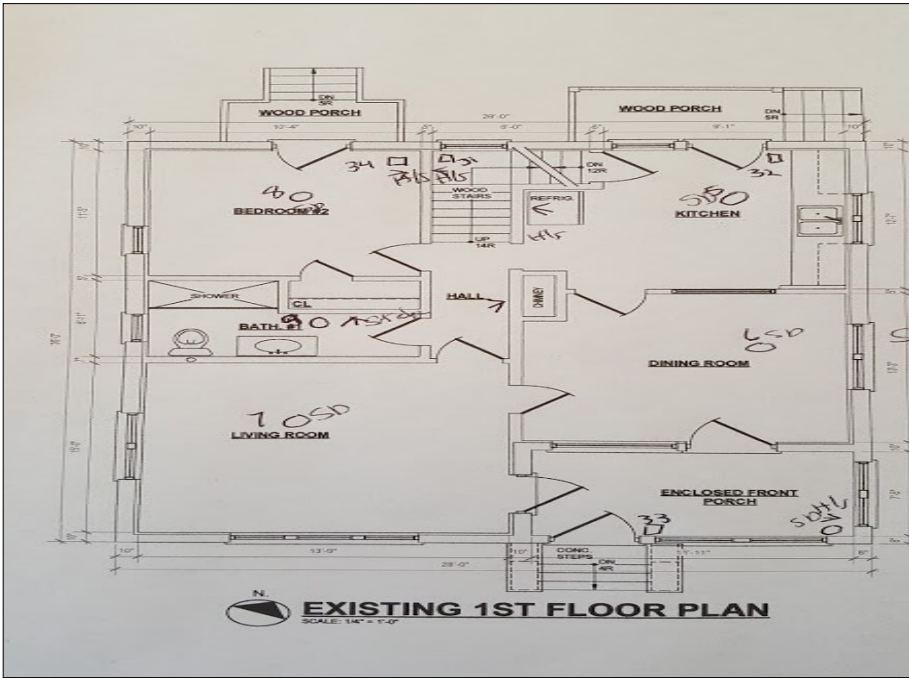
847-207-2108

bryan@gcrealtyinc.com

GC Realty & Development LLC

219 E. Irving Pk. Rd. Roselle IL 60172





SITEPLAN

