

FOR SUBLEASE

MID FLORIDA LOGISTICS PARK - BUILDING 5

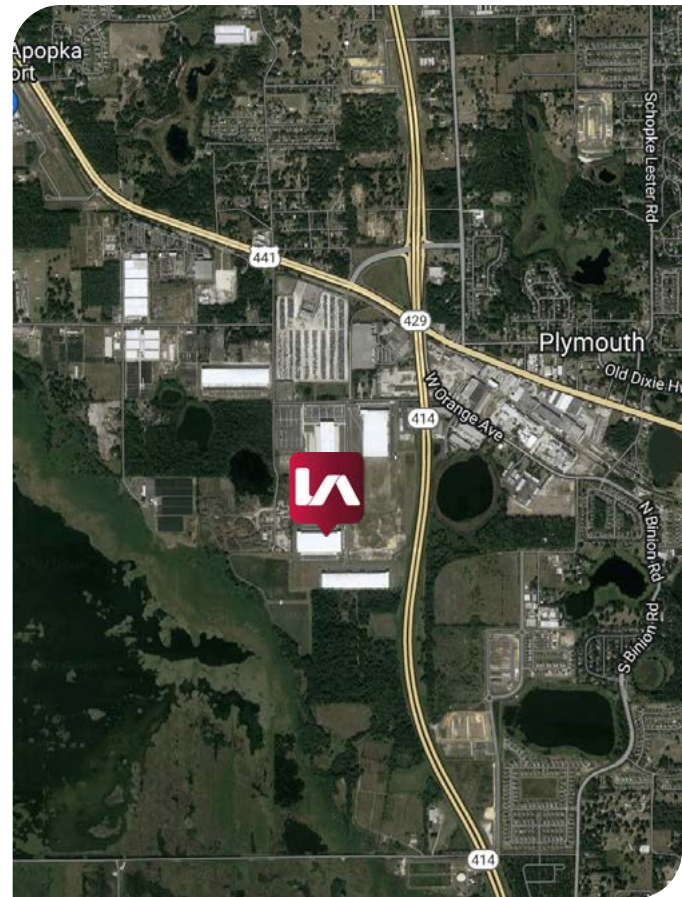
3040 SHELBY INDUSTRIAL DRIVE | SUITE 100 | APOPKA, FL 32703



AVAILABLE JUNE 1, 2025

AVAILABILITY

AVAILABLE SF:	Suite 100 - 83,970 SF
TERM:	Will consider short term sublease
OFFICE SF:	1,483 SF
CLEAR HEIGHT:	36'
COLUMNS:	50'W x 56'D column spacing, typical
BUILDING DEPTH:	320'
TRUCK COURT:	185'
PARKING:	45± car parking spaces
OVERFLOW TRAILER PARKING:	96
COMMENTS:	Brand new, first generation, Class A space. Cross dock configuration.
LEASE RATE:	\$9.25/SF NNN
OP EX:	\$2.60/SF

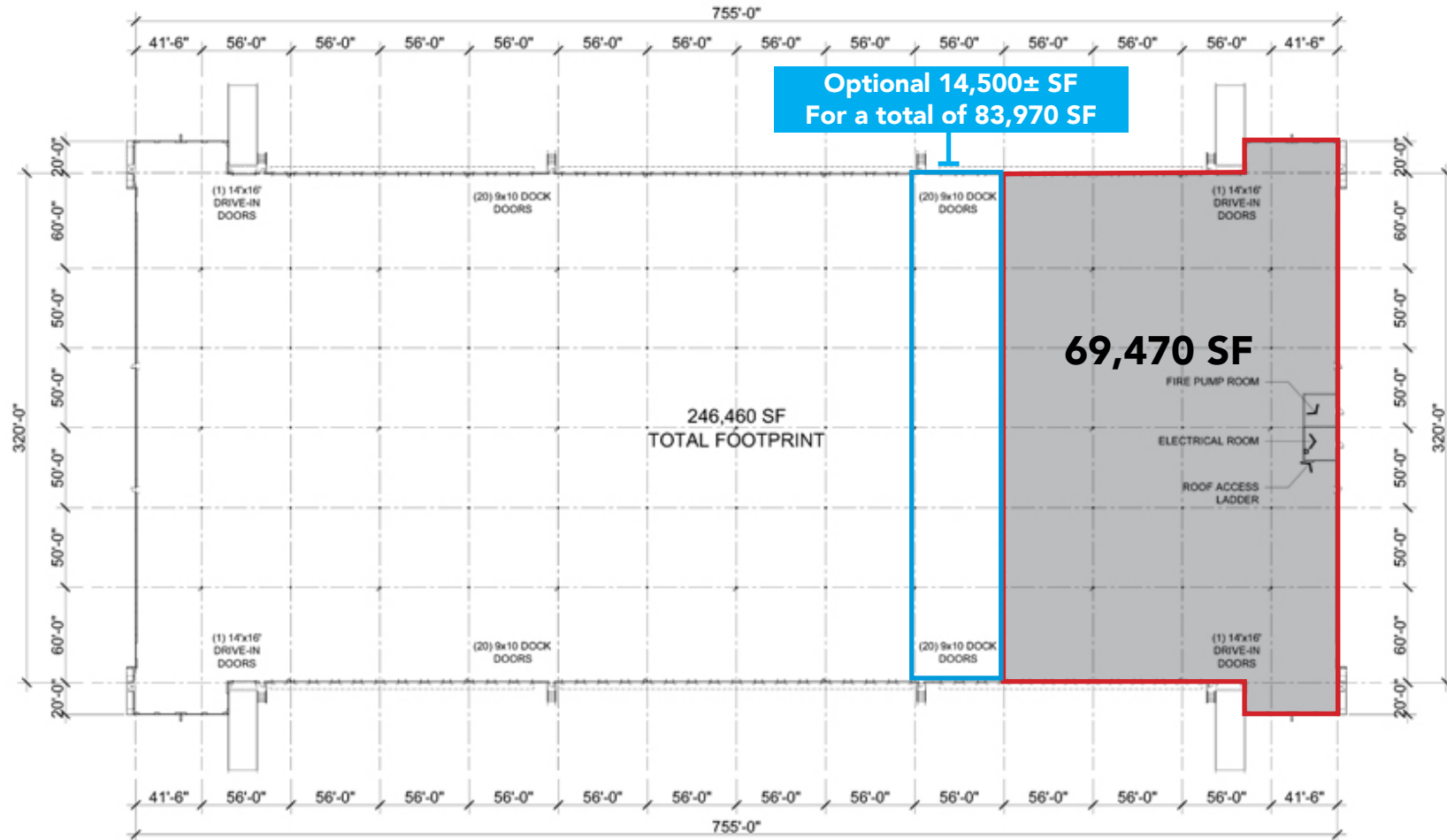


William "Bo" Bradford, CCIM, SIOR
bbradford@lee-associates.com
D 321.281.8502

All information furnished regarding property for sale, rental or financing is from sources deemed reliable, but no warranty or representation is made to the accuracy thereof and same is submitted to errors, omissions, change of price, rental or other conditions prior to sale, lease or financing or withdrawal without notice. No liability of any kind is to be imposed on the broker herein.

MID FLORIDA LOGISTICS PARK - BUILDING 5

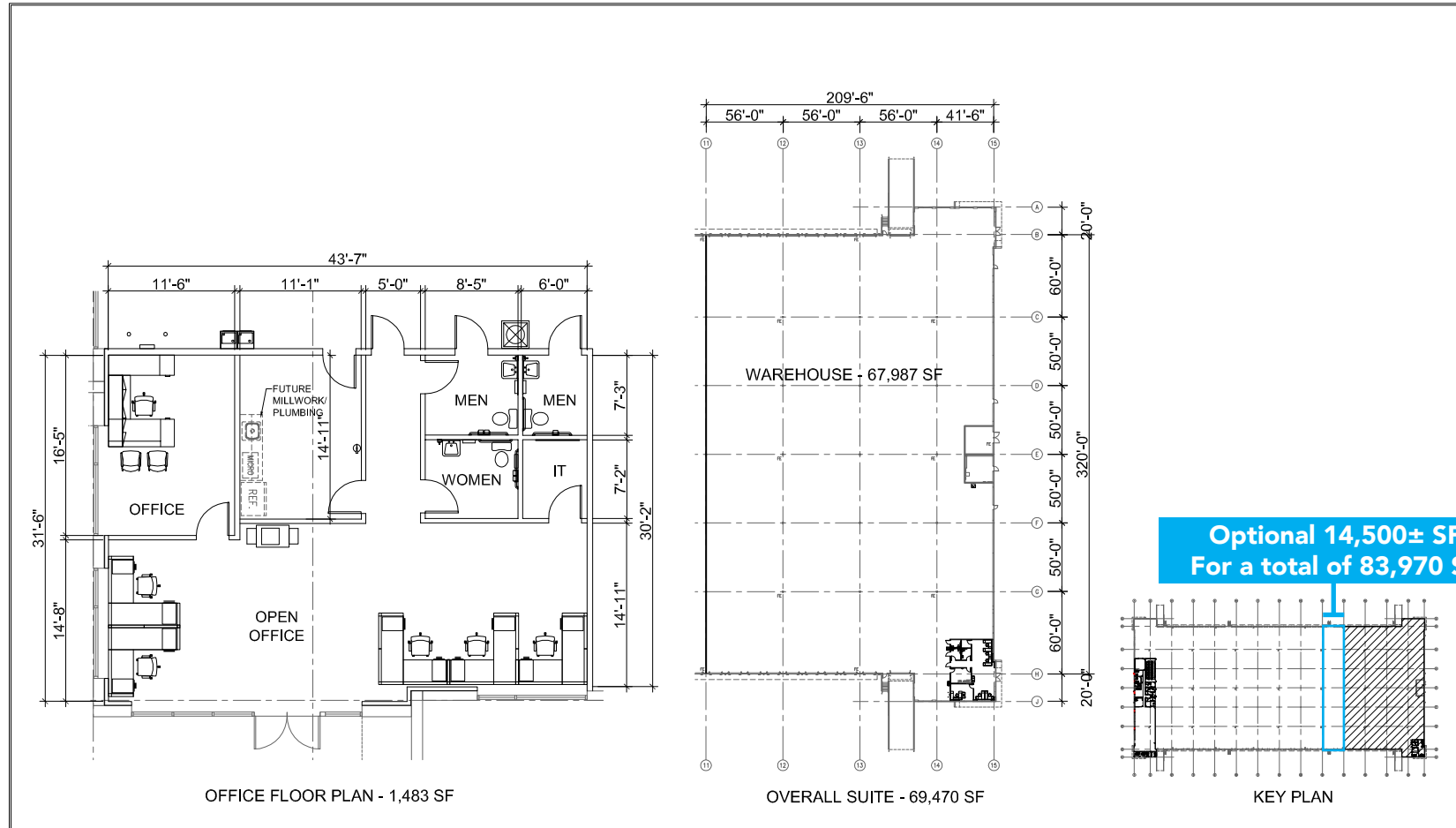
3040 SHELBY INDUSTRIAL DRIVE | SUITE 100 | APOPKA, FL 32703



William "Bo" Bradford, CCIM, SIOR
 bbradford@lee-associates.com
 D 321.281.8502

All information furnished regarding property for sale, rental or financing is from sources deemed reliable, but no warranty or representation is made to the accuracy thereof and same is submitted to errors, omissions, change of price, rental or other conditions prior to sale, lease or financing or withdrawal without notice. No liability of any kind is to be imposed on the broker herein.

MID FLORIDA LOGISTICS PARK - BUILDING 5
 3040 SHELBY INDUSTRIAL DRIVE | SUITE 100 | APOPKA, FL 32703



North

0' 16' 32' 64'

SCALE: 1/8" = 1'-0"

SEPTEMBER 14, 2022

SPEC · OFFICE
 3040 SHELBY INDUSTRIAL DRIVE
 APOPKA, FLORIDA

21418

LEE & ASSOCIATES
 COMMERCIAL REAL ESTATE SERVICES

4
 ARCHITECTURE

William "Bo" Bradford, CCIM, SIOR
 bbradford@lee-associates.com
 D 321.281.8502

All information furnished regarding property for sale, rental or financing is from sources deemed reliable, but no warranty or representation is made to the accuracy thereof and same is submitted to errors, omissions, change of price, rental or other conditions prior to sale, lease or financing or withdrawal without notice. No liability of any kind is to be imposed on the broker herein.