

Ingersoll Retail Opportunity

2212 Ingersoll Avenue
Des Moines, Iowa 50312
www.cbre.com/desmoines

Available Space

- + Building Size: 4,162 SF
- + .417 Acre Lot off Ingersoll Avenue

Sale Price

- + \$725,000.00

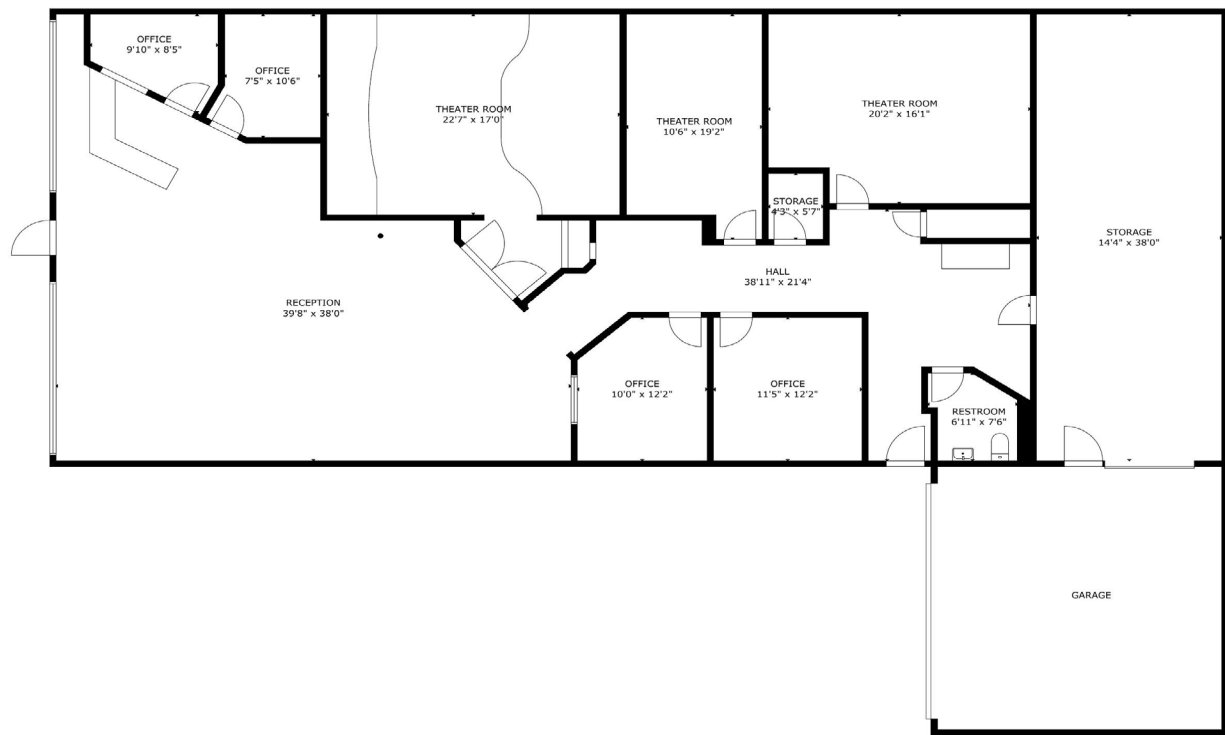
Traffic Counts

- + 12,000 VPD on Ingersoll Ave
- + 15,800 VPD on Martin Luther King Jr Parkway

Property Features

- + Great Location just West of Ingersoll/Martin Luther King Jr. Parkway Intersection
- + Close proximity to Grand Tree Apartments, Soll Apartments, Mediacom, Mister Car Wash, Sakari Sushi Lounge, Qdoba, Menchies, Noodle & Company and Starbucks.
- + Zoned MX2





MAIN FLOOR

GROSS INTERNAL AREA
TOTAL: 3,413 sq.ft
MAIN FLOOR: 3,413 sq.ft
SIZE AND DIMENSIONS ARE APPROXIMATE, ACTUAL MAY VARY

[CLICK HERE FOR VIRTUAL TOUR](#)



2212 Ingersoll Avenue
Des Moines, Iowa

For Sale



Contact Us

Ben Probst

Senior Associate

+1 515 326 1985

ben.probst@cbre.com

Licensed in the State of Iowa.

Blake Bogenrief, CCIM

Senior Associate

+1 515 444 8067

blake.bogenrief@cbre.com

Licensed in the State of Iowa.

© 2023 CBRE, Inc. All rights reserved. This information has been obtained from sources believed reliable, but has not been verified for accuracy or completeness. You should conduct a careful, independent investigation of the property and verify all information. Any reliance on this information is solely at your own risk. CBRE and the CBRE logo are service marks of CBRE, Inc. All other marks displayed on this document are the property of their respective owners, and the use of such logos does not imply any affiliation with or endorsement of CBRE. Photos herein are the property of their respective owners. Use of these images without the express written consent of the owner is prohibited.