

FOR SALE | 95 ± ACRE THOROUGHBRED FACILITY



**GARDNER
PROPERTY
GROUP**

WEST OF I-69 | Morgan County



Conveniently located <10 min to I-69, <20 min to I-465, and 30 min to Indy and Horseshoe

For All Your Commercial Real Estate Needs Please Contact:
Isaac VanCuren @ Gardner Property Group

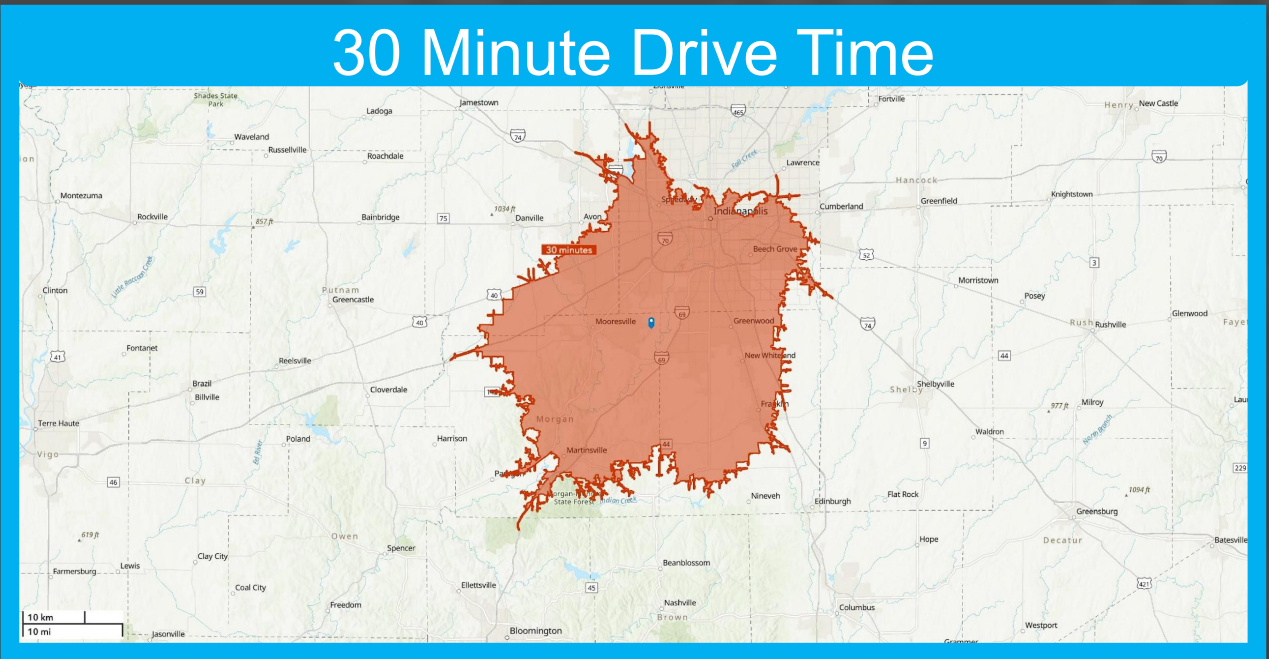
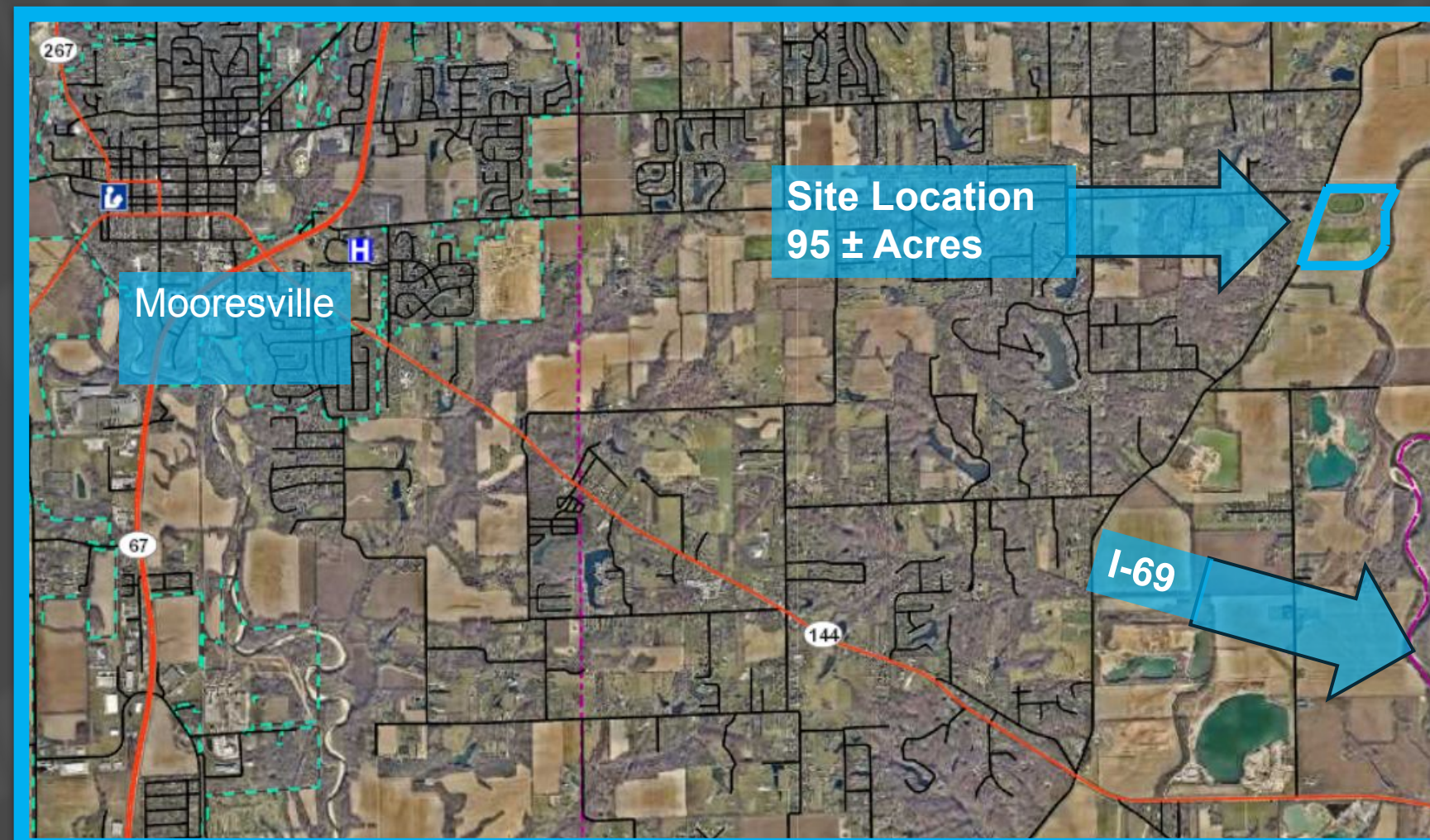
M: 812.900.2125 // E: Isaac@CallGPG.com // 234 E 9th St, Indianapolis, IN 46204 // www.CallGPG.com

AVAILABLE: 95 ± Acre Thoroughbred training facility in Mooresville, IN. Ideal for thoroughbred and equine professionals.

Location: Conveniently located near major highways in a centralized location in Morgan County.

Facilities: 40-stall barn, 1/2 mile track, pole barn, hay barn, fenced pastures with shelters, round pens, large stall barn with wash rack/laundry, office, EuroXciser, four 1-bed/1-bath apartments.

House on Property: Built in 2019, 3 bedrooms, 3.5 bathrooms, 2592 sqft, 4-car attached garage. Modern home with spacious interiors.

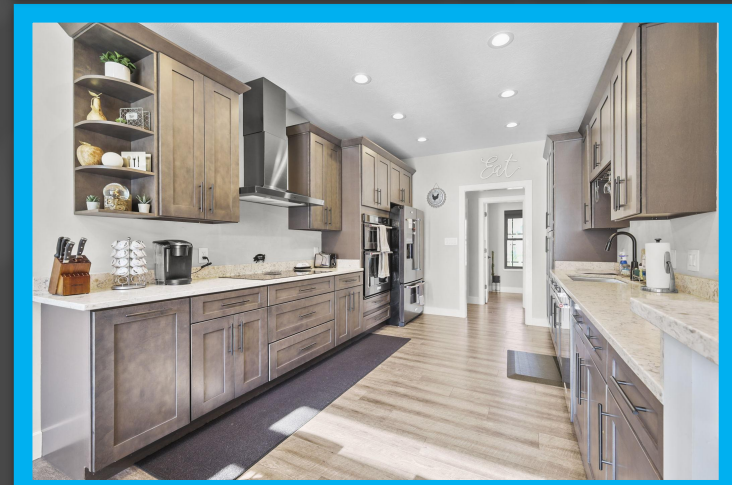
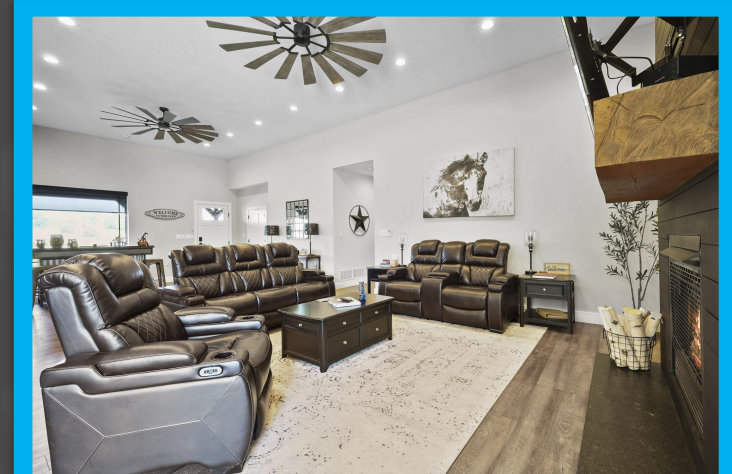




**GARDNER
PROPERTY
GROUP**

AVAILABLE | 95 ± ACRE THOROUGHbred FACILITY

MORGAN COUNTY - 12365 N Mann Rd, Mooresville, IN 46158



For All Your Commercial Real Estate Needs Please Contact: **Isaac VanCuren** | 812.900.2125 | Isaac@CallGPG.com | CallGPG.com



**GARDNER
PROPERTY
GROUP**

AVAILABLE | 95 ± ACRE THOROUGHbred FACILITY

MORGAN COUNTY - 12365 N Mann Rd, Mooresville, IN 46158



Facing South



Facing North



Facing West



Facing East



For all your Commercial Real Estate Needs Please Contact: **Isaac VanCuren** | 812.900.2125 | Isaac@CallGPG.com | CallGPG.com