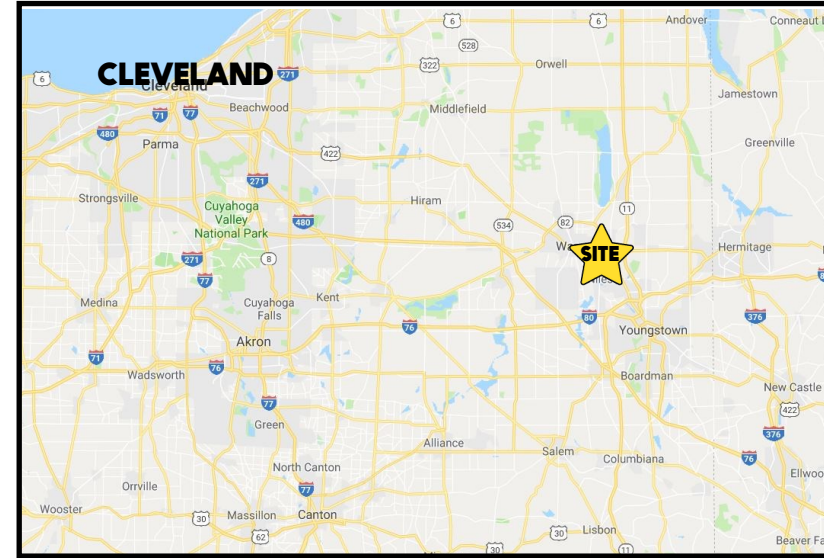


LOCATION

907 North Rd SE, Warren, OH 44484



TRAFFIC

North Rd = 12,495 VPD

HIGHLIGHTS

- 8.98 acres on North Rd SE, Howland Township
- Next to the former North Rd Elementary School
- All public utilities available
- Excellent location by Warren, Howland, and Niles
- Minutes from doctors, restaurants, & The Eastwood Mall Complex

CONTACT

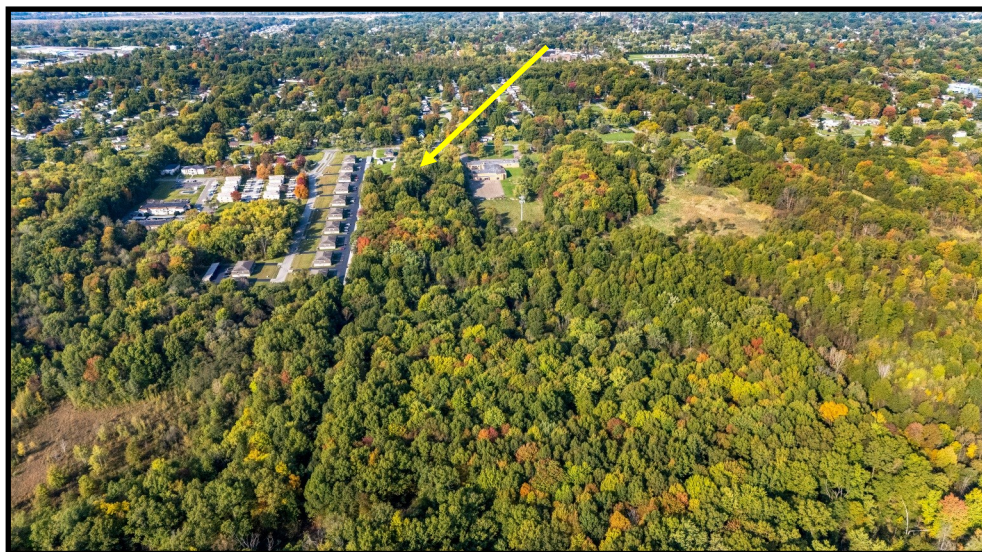
ALICIA "LISH" ANGELO

740.627.0431

aangelo@platzrealtygroup.com

Office: 330.757.4889 | Fax: 330.294.5622 | 3830 Starr Centre Dr, Suite 2, Canfield, OH 44406

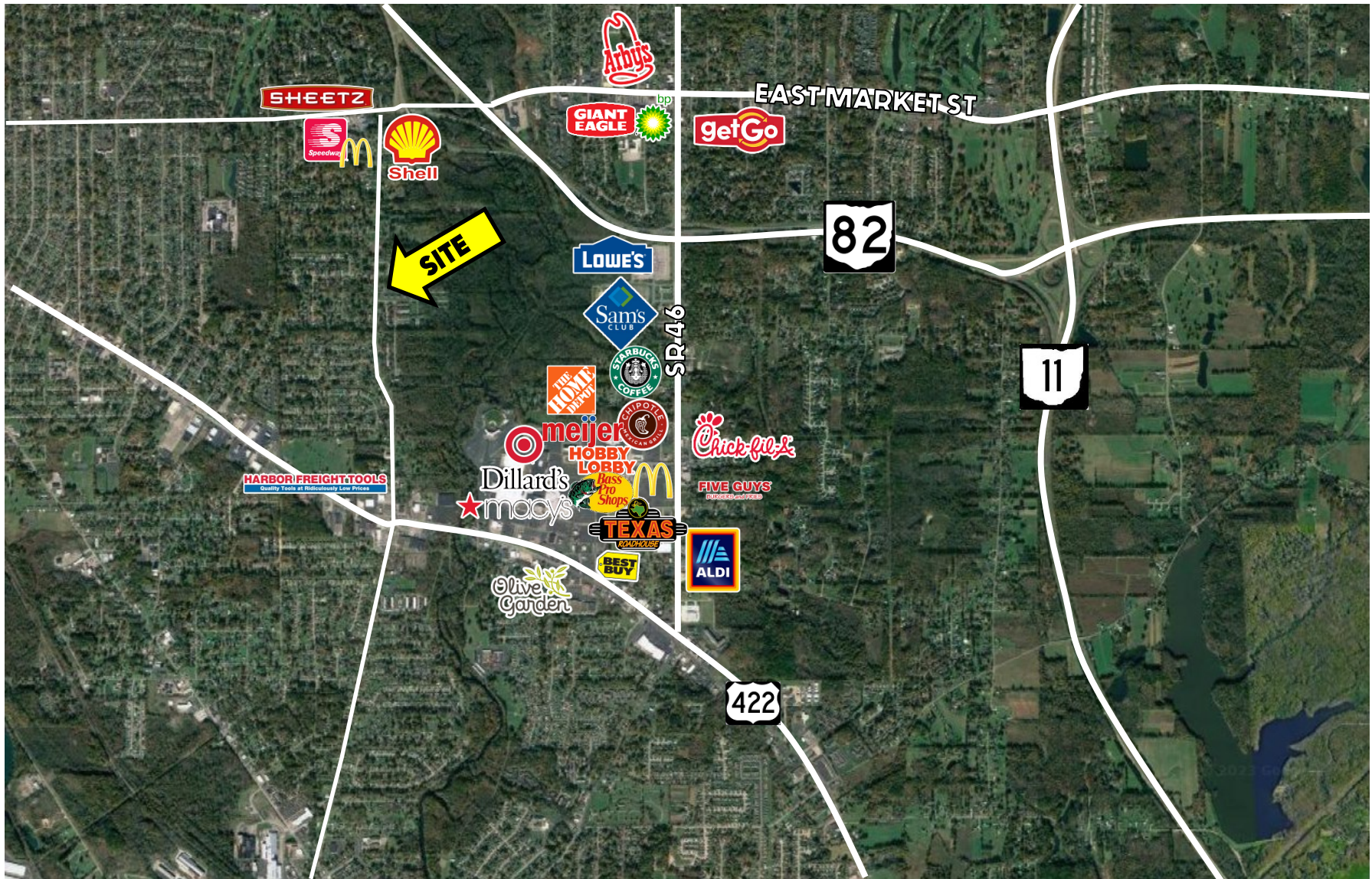
www.PLATZREALTYGROUP.com



Office: 330.757.4889 | Fax: 330.294.5622 | 3830 Starr Centre Dr, Suite 2, Canfield, OH 44406

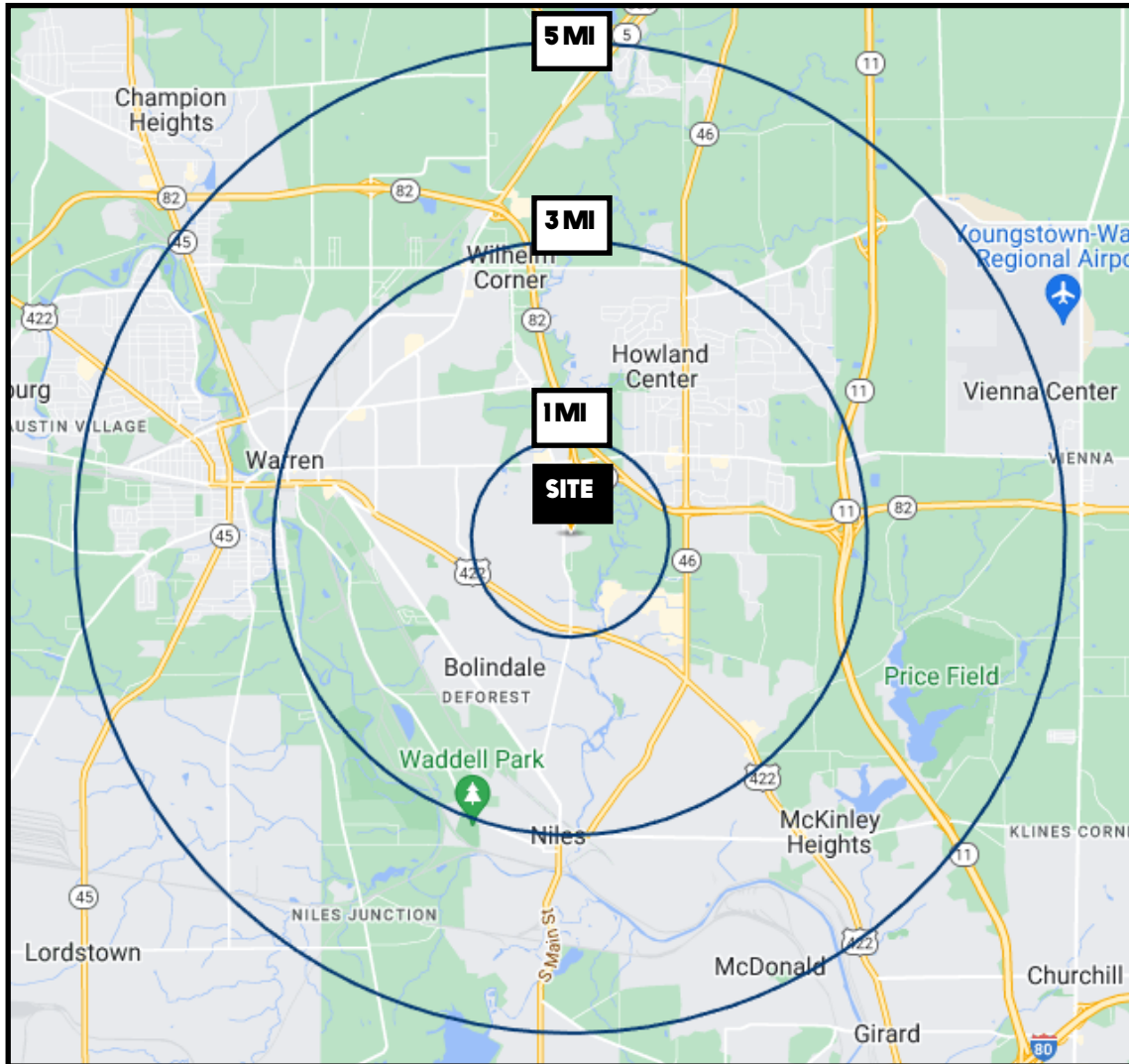
www.PLATZREALTYGROUP.com

The information presented was obtained from sources believed to be true and reliable. The Platz Realty Group makes no warranties or guarantees to the accuracy of the information.



Office: 330.757.4889 | Fax: 330.294.5622 | 3830 Starr Centre Dr, Suite 2, Canfield, OH 44406

www.PLATZREALTYGROUP.com



DEMOGRAPHICS	1 MI	3 MI	5 MI
POPULATION	23,429	87,387	197,473
HOUSEHOLDS	10,612	38,052	85,162
MEDIAN AGE	44	43	43
AVERAGE HH INCOME	\$60,162	\$60,090	\$62,801

SITE INFORMATION	
LOCATION	Howland Township Trumbull County
PARCEL	44-058250
PROPERTY TYPE	Land
ZONING	RA (Next to RB)
SIZE	8.98 acres
UTILITIES	All public utilities available
REAL ESTATE TAXES	\$889/year
PRICE	Not disclosed

Office: 330.757.4889 | Fax: 330.294.5622 | 3830 Starr Centre Dr, Suite 2, Canfield, OH 44406