



Post Road Plaza

24 Old Albany Post Rd, Croton On Hudson, NY 10520



HOULIHAN LAWRENCE
COMMERCIAL



Ken Lefkowitz

Houlihan Lawrence Commercial
800 Westchester Ave, Suite N 517, Rye Brook, NY 10573
klefkowitz@houlihanlawrence.com
(914) 798-4900



Post Road Plaza

\$25.00 /SF/YR

Prime Location with High Visibility and Ample Parking
 This excellent community shopping center features outstanding visibility along Albany Post Road, complemented by convenient public transit stops just outside the property. The site also offers ample on-site parking for tenants and visitors.

Property Features

- Prime location with high visibility
- Public transit stops nearby
- Ample on-site parking
- Vaulted ceilings
- Elevator in building

Available Suites

Suite 02RF - 1500 sq ft

- Former Consulting Office
- Large offices
- Large reception area
- Large conference room
- Coffee station with sink
- ...

- This well appointed commercial property features an elevator, marble entry, newly renovated Lobby, and cathedral ceilings.



Rental Rate:	\$25.00 /SF/YR
Total Space Available:	4,850 SF
Max. Contiguous:	3,350.00 SF
Property Type:	Office
Property Subtype:	Medical
Building Class:	B
Rentable Building Area:	20,000 SF
Year Built:	1985
Walk Score ©:	46 (Car-Dependent)
Rental Rate Mo:	\$2.08 /SF/MO

2nd Floor Ste O2RF

1

Space Available	1,500 SF
Rental Rate	\$25.00 /SF/YR
Date Available	Now
Service Type	Triple Net (NNN)
Space Type	Relet
Space Use	Office
Lease Term	Negotiable

- Former Consulting Office- Large Offices, Large Reception Area, Large Conference Room, Coffee Station with sink- Men's and Woman's Restroom in Lobby- Vaulted Ceilings- Elevator in Building

2nd Floor Ste O3LF

2

Space Available	2,000 SF
Rental Rate	\$25.00 /SF/YR
Contiguous Area	3,350 SF
Date Available	Now
Service Type	Triple Net (NNN)
Space Type	Relet
Space Use	Office
Lease Term	Negotiable

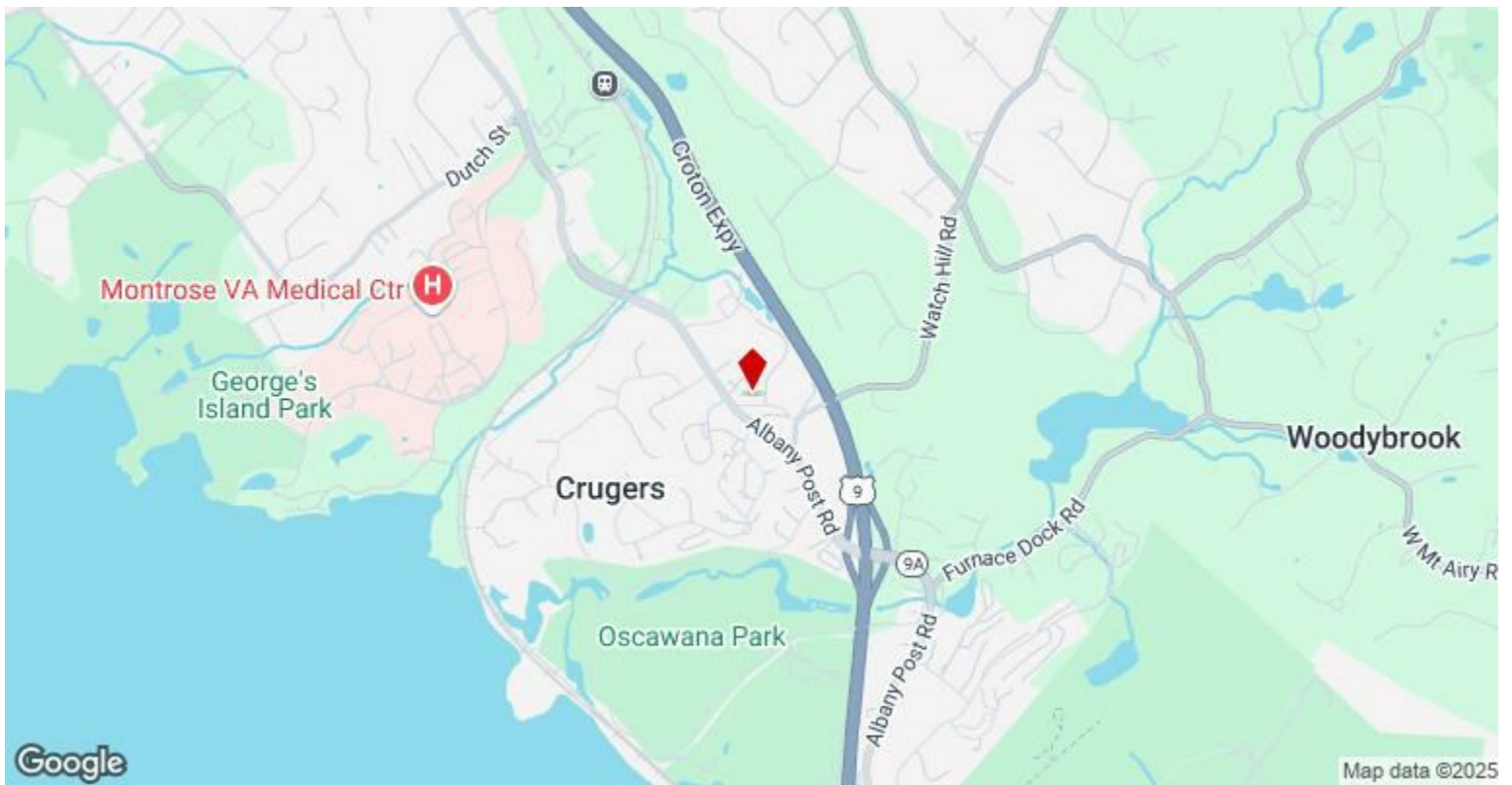
- Former Dance Studio for over 30 Years- 3 Large Studios, Reception Area, Locker/Changing Room- Restroom in Suite- Vaulted Ceilings- Elevator in Building

2nd Floor Ste O4LR

3

Space Available	1,350 SF
Rental Rate	\$25.00 /SF/YR
Contiguous Area	3,350 SF
Date Available	Now
Service Type	Triple Net (NNN)
Space Type	Relet
Space Use	Office
Lease Term	Negotiable

- Former Construction Office- 4 Large Offices, Large Reception Area, Coffee Station with sink- Men's and Woman's Restroom in Lobby- Vaulted Ceilings- Elevator in Building



24 Old Albany Post Rd, Croton On Hudson, NY 10520

Prime Location with High Visibility and Ample Parking

This excellent community shopping center features outstanding visibility along Albany Post Road, complemented by convenient public transit stops just outside the property. The site also offers ample on-site parking for tenants and visitors.

Property Features

- Prime location with high visibility
- Public transit stops nearby
- Ample on-site parking
- Vaulted ceilings
- Elevator in building

Available Suites

Suite 02RF - 1500 sq ft

- Former Consulting Office
- Large offices
- Large reception area
- Large conference room
- Coffee station with sink
- Men's and women's restrooms in the lobby

Suite 03LF - 1500 sq ft

- 2nd Generation Dance Studio
- 3 large studios
- Reception area
- Locker/changing room
- Restroom in suite

Suite 04LR - 1350 sq ft

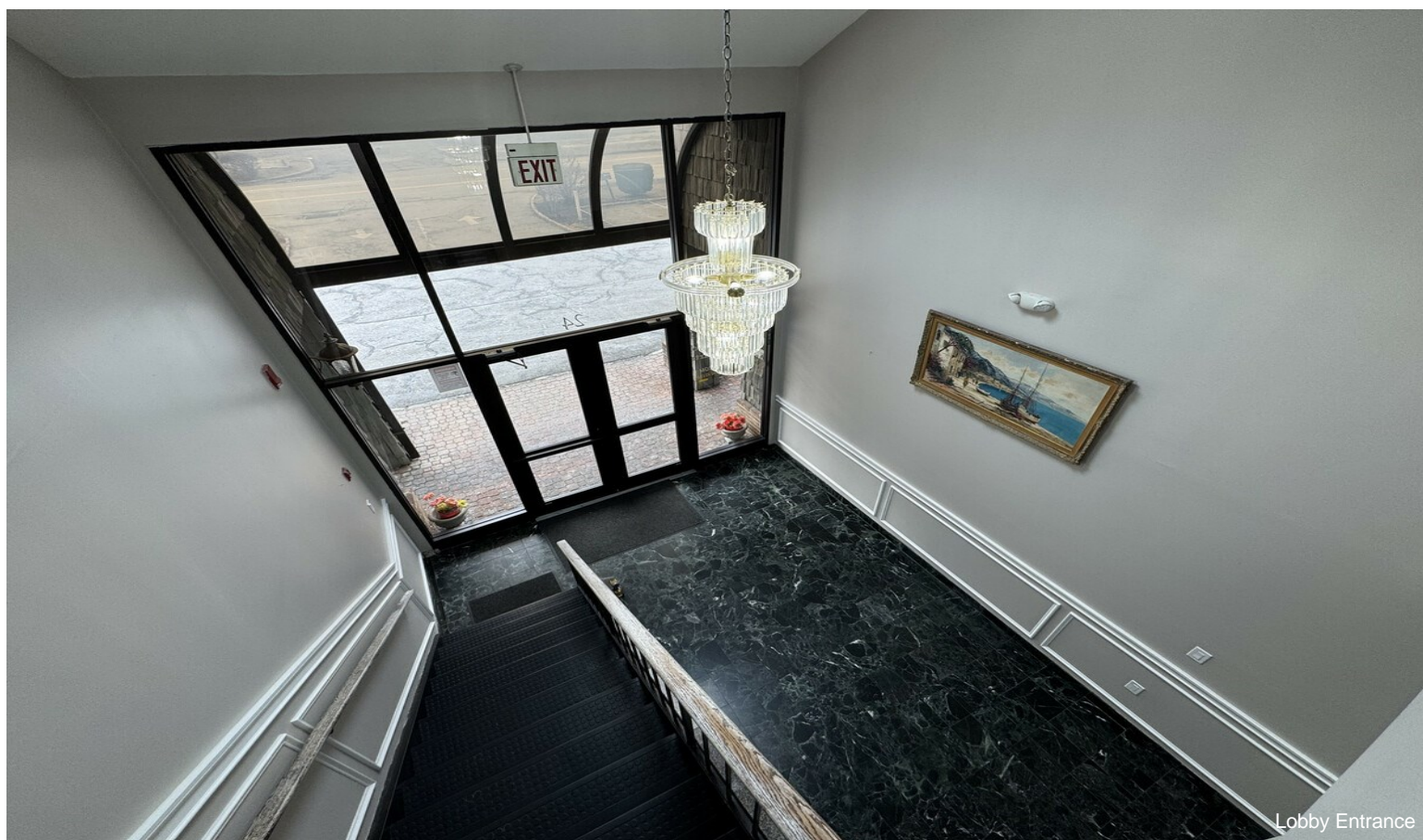
- Former Construction Office
- 4 large offices
- Large reception area
- Coffee station with sink
- Men's and women's restrooms in the lobby

Don't miss this opportunity to secure a versatile space in a prime location. Contact us today to schedule a

Property Photos

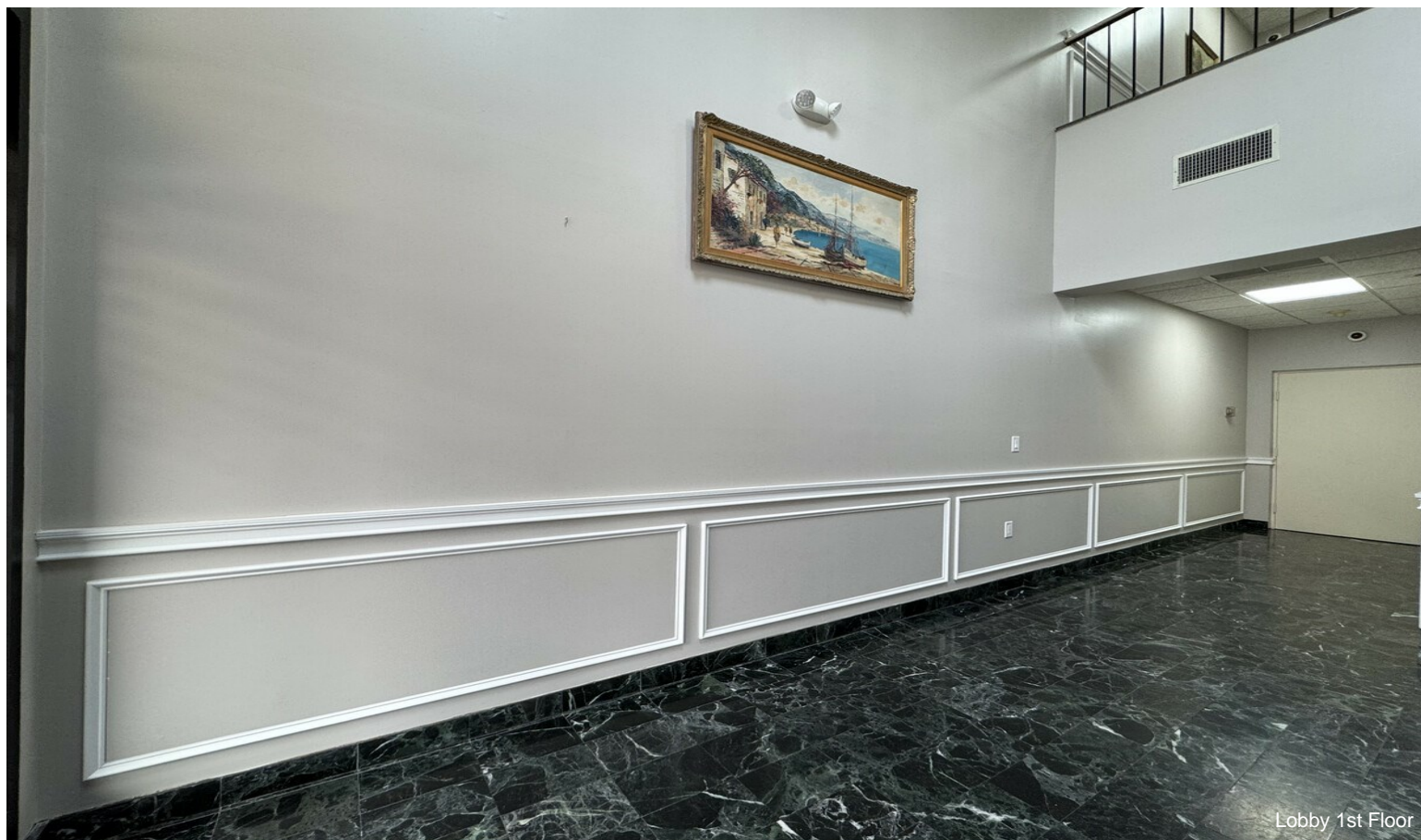


Front of Building



Lobby Entrance

Property Photos

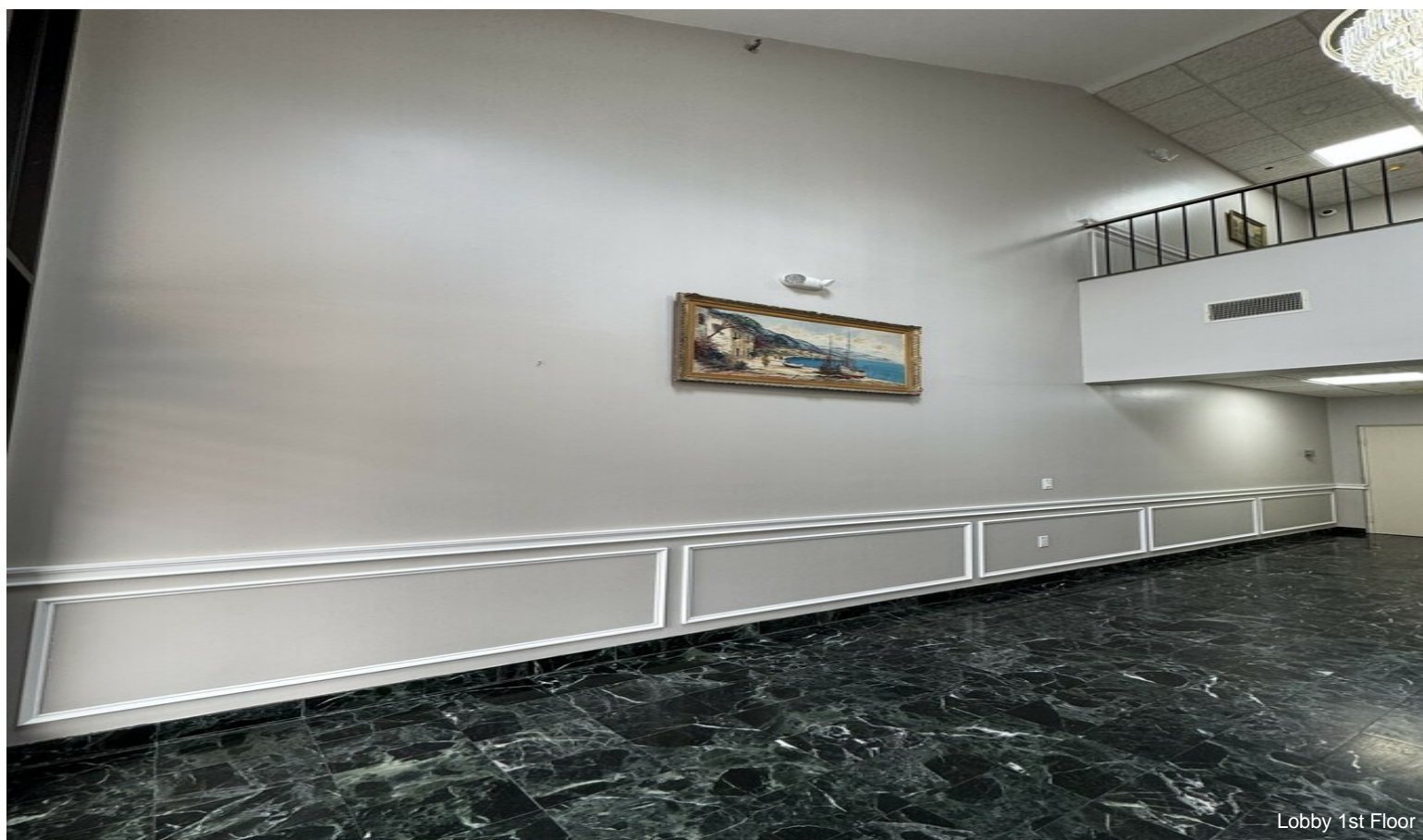


Lobby 1st Floor

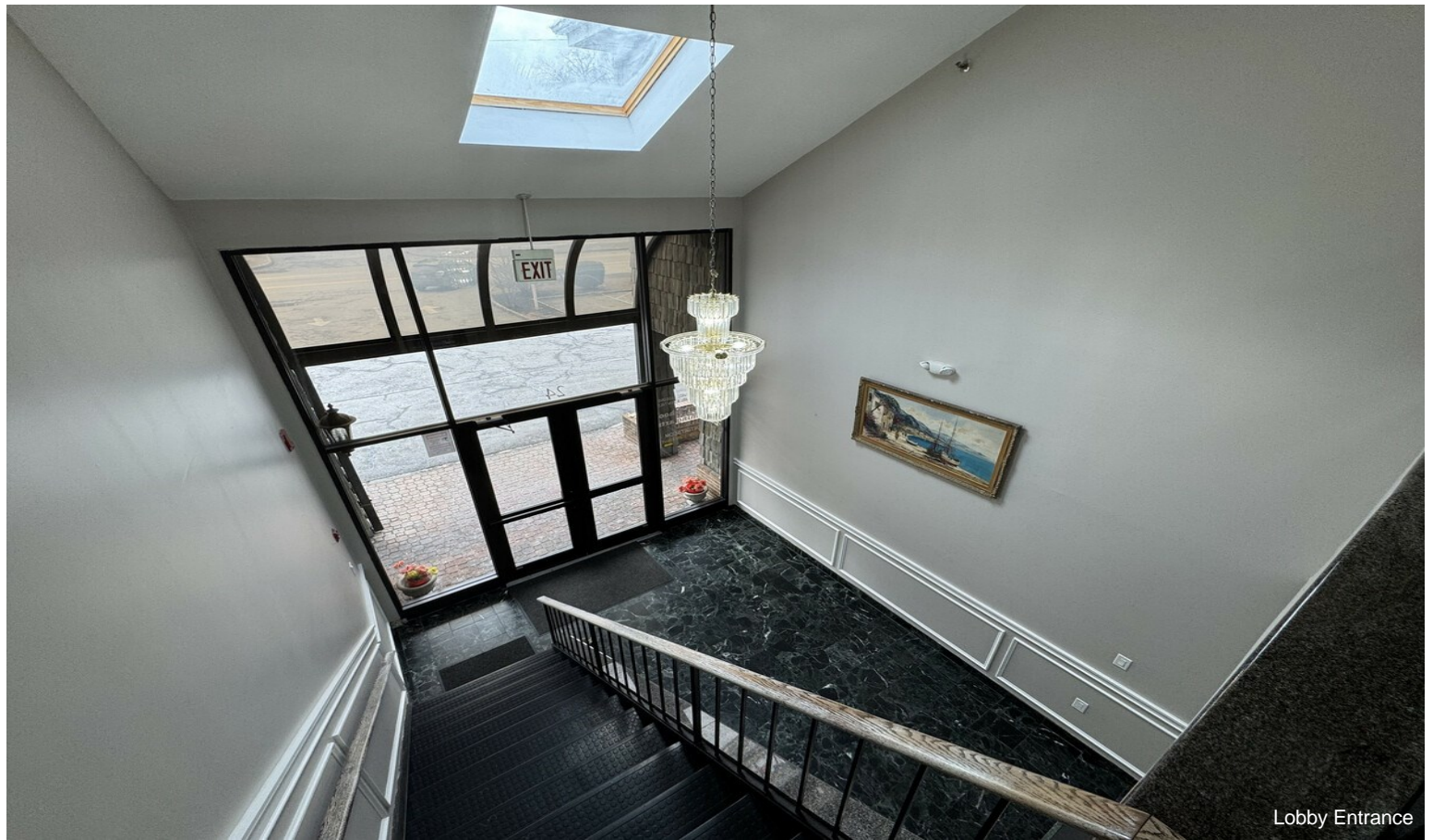


Lobby 1st Floor

Property Photos



Property Photos



Lobby Entrance

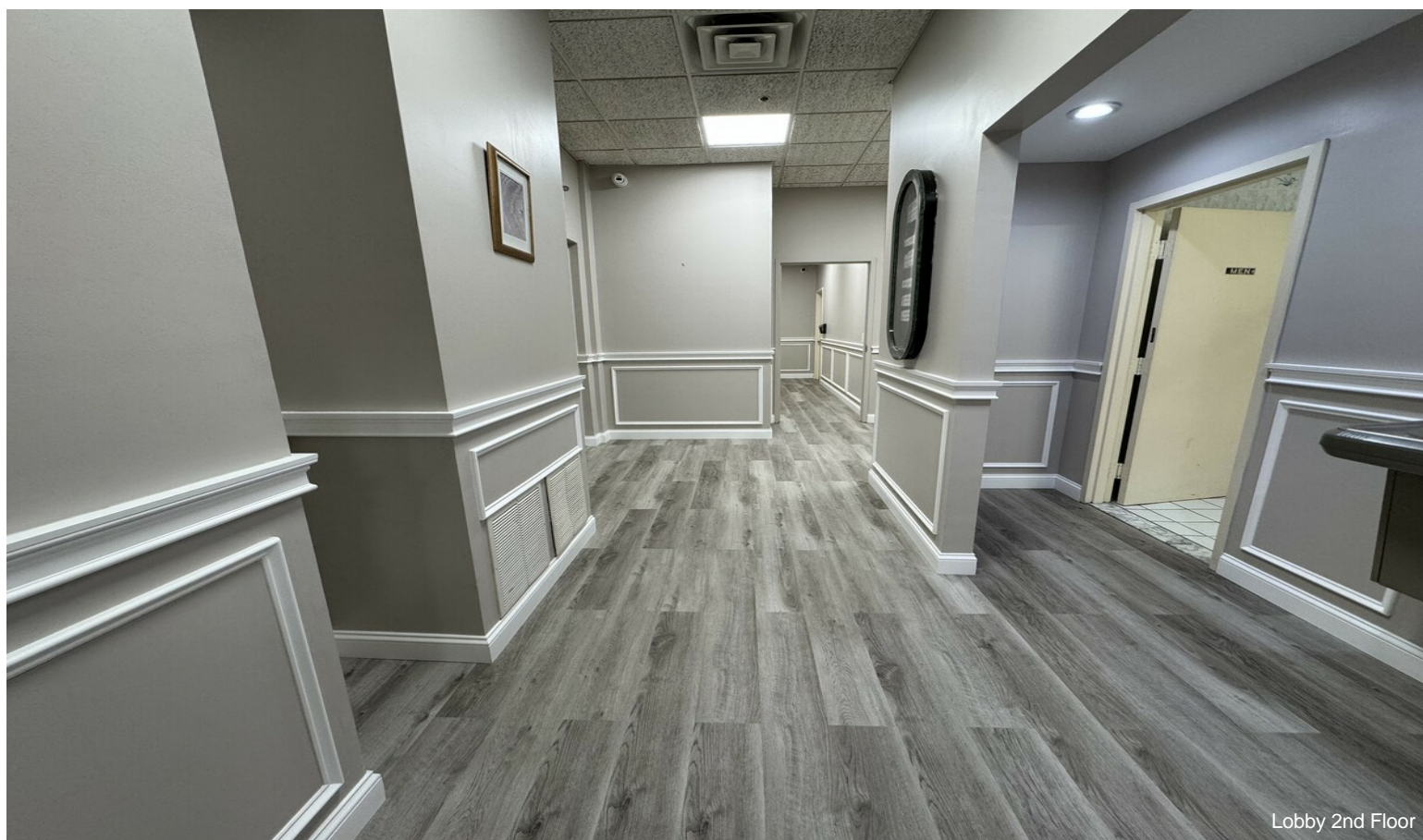


Elevator 2nd Floor

Property Photos



Lobby 2nd Floor

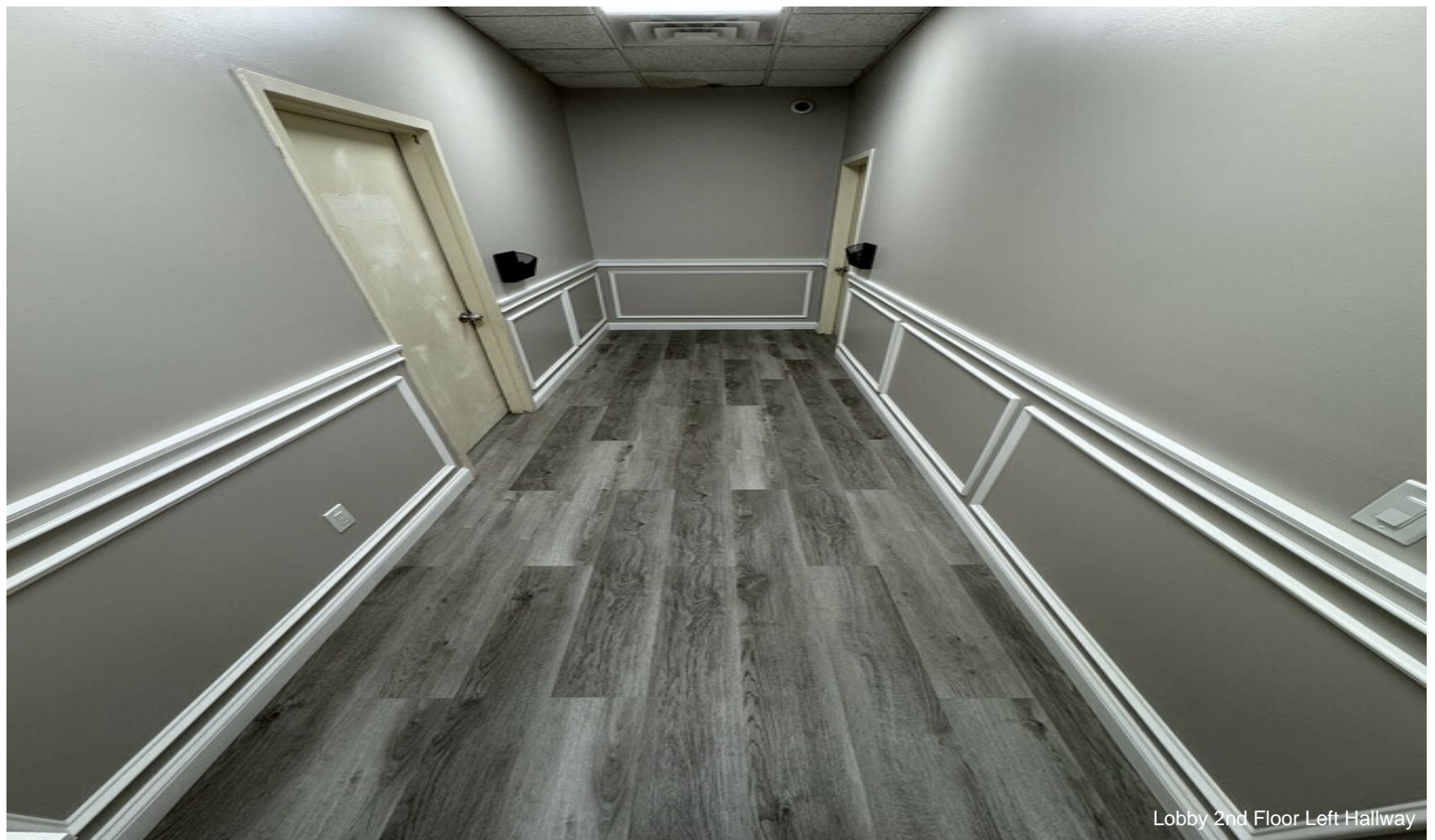


Lobby 2nd Floor

Property Photos



Lobby 2nd Floor Fire Escape

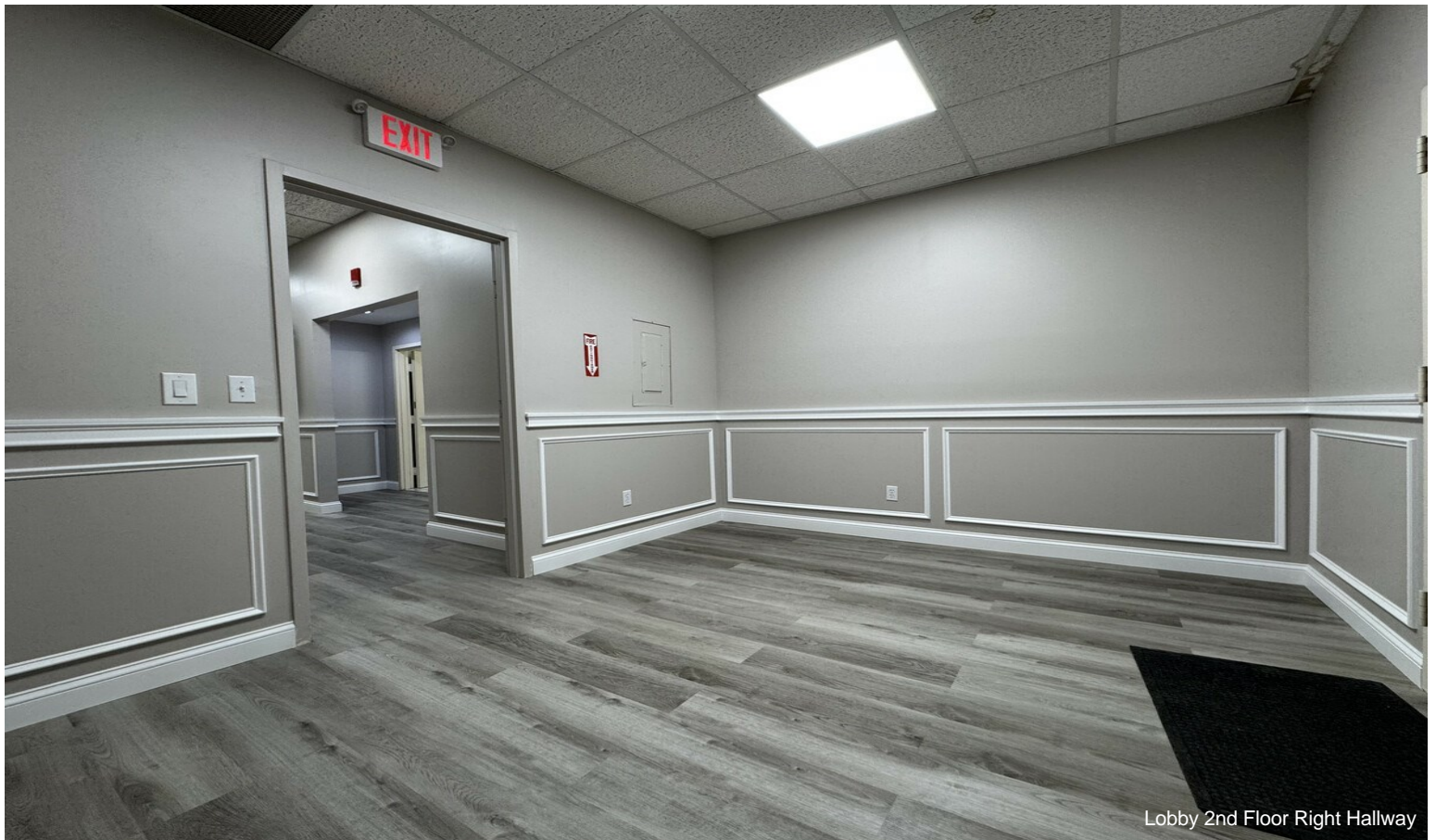


Lobby 2nd Floor Left Hallway

Property Photos

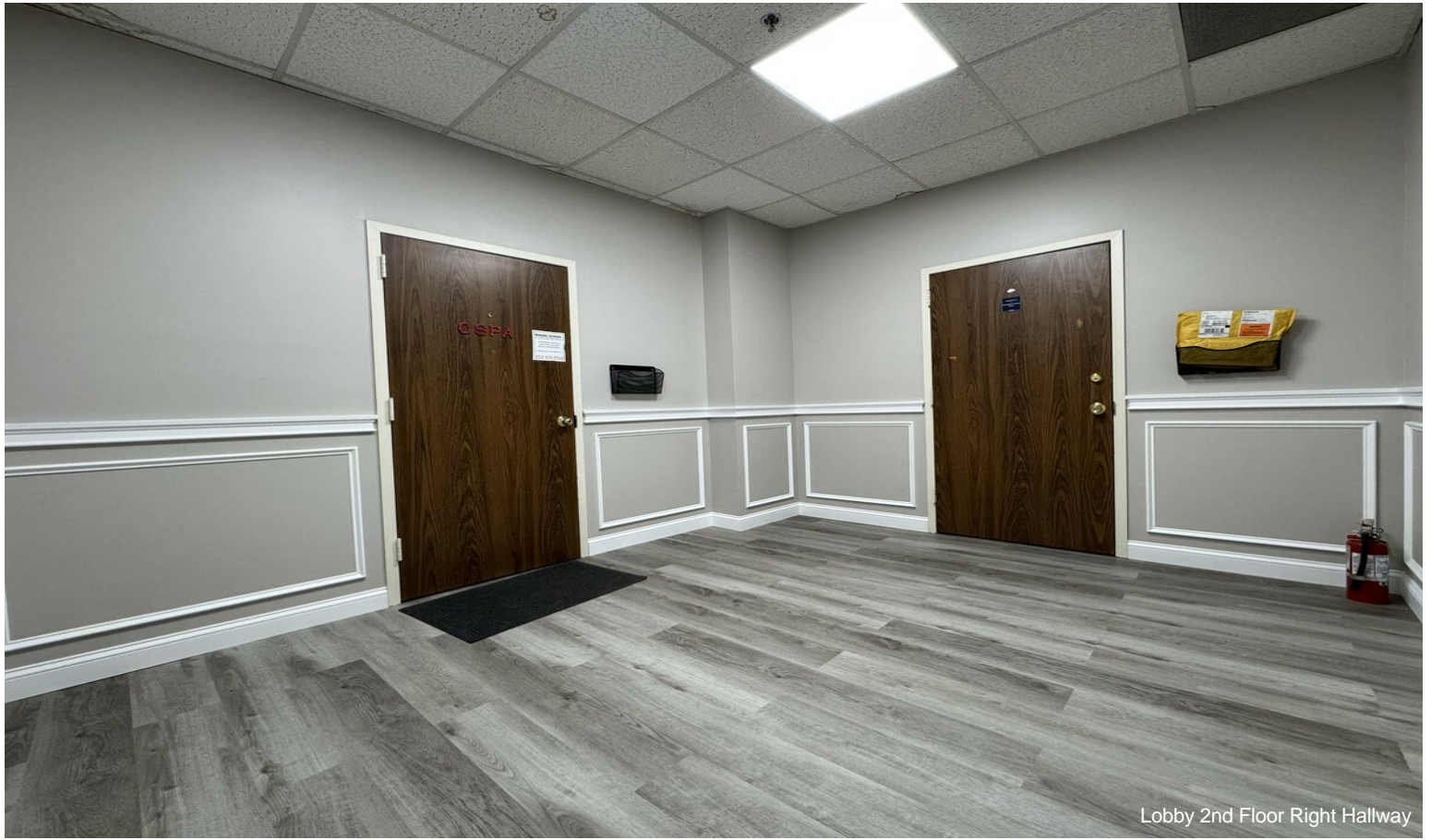


Lobby 2nd Floor Left Hallway



Lobby 2nd Floor Right Hallway

Property Photos



Lobby 2nd Floor Right Hallway



Parking Lot

Property Photos



Property Photos



Front of Building



Front of Building

Property Photos



Front of Building



Front of Building

Property Photos



Front of Building



Front of Building

Property Photos



Front of Building



Front of Building

Property Photos



Front of Building



Front of Building