



available

pawleys island plaza

10225 ocean highway north | pawleys island, sc 29585

shop space opportunities

- Publix-anchored neighborhood shopping center located in the Pawleys Island submarket of Georgetown County
- Shop space opportunities available ranging from 1,289 sf - 4,100 sf
- Located at the signalized intersection of US Highway 17 (Ocean Highway) and Pettrigru Drive with multiple points of ingress/egress and ample parking
- Join best-in-class national retailers including T.J. Maxx, Ulta Beauty, Petco, Rack Room Shoes, Jersey Mike's, and Smoothie King
- Surrounded by an affluent population with an average household income of \$100K+ within 3-miles. Pawleys Island is a popular vacation destination with more than 1 million visitors annually

nearby retailers



traffic counts

36,600 VPD | Highway 17

Source: ESRI 2023



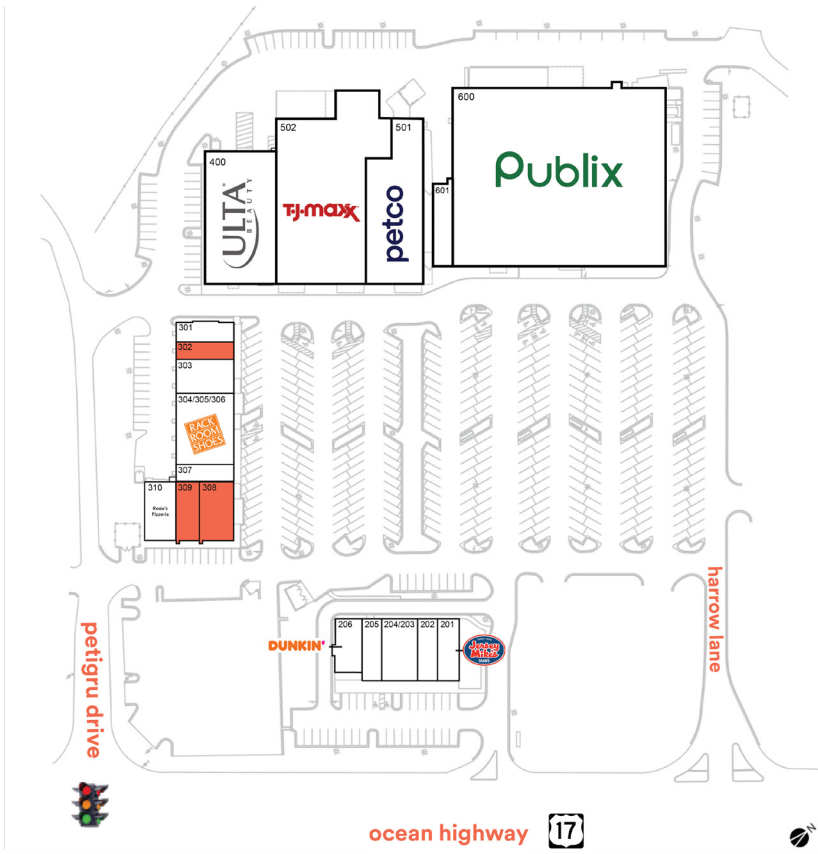
**carolina
retail
experts**
concept to
community

Lindsey Halter, CCIM
☎ 864 270 2089
✉ lindsey@cre.expert

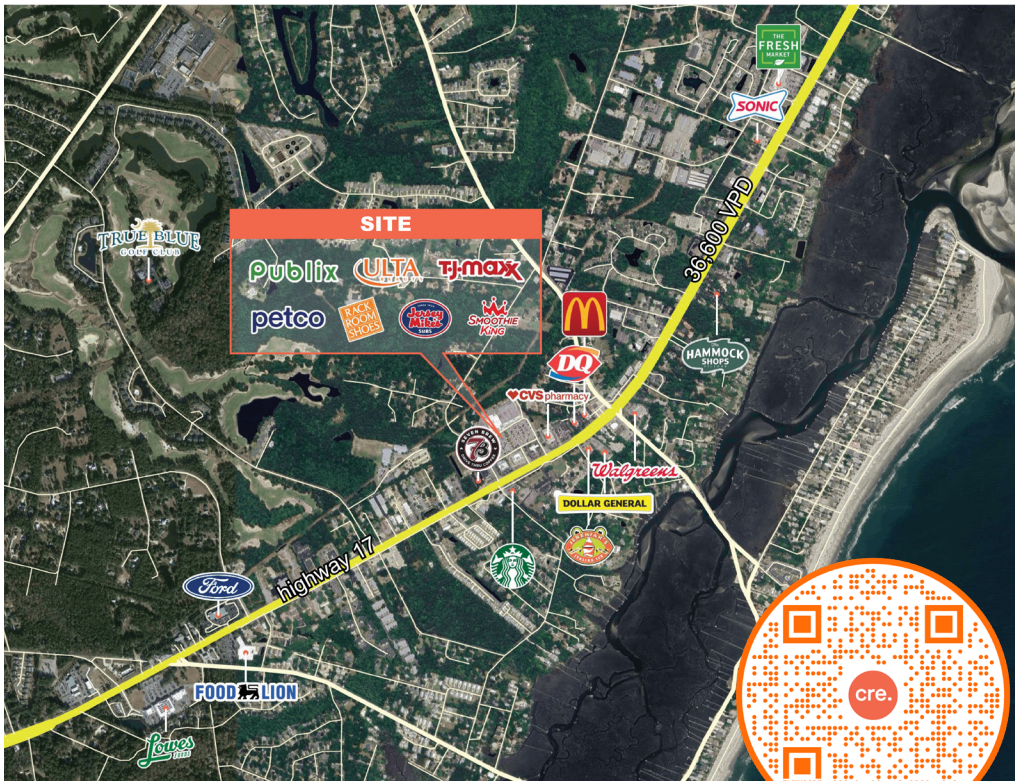
Taylor Boyd
☎ 854 842 9842
✉ taylor@cre.expert

John Orr, CCIM
☎ 854 900 3390
✉ john@cre.expert

463 king street suite b. charleston, sc 29403 | cre.expert



unit	size
unit 201	Jersey Mike's Subs
unit 202	AT&T
unit 203/204	Premier Smile & Implant Center
unit 205	J. McLaughlin
unit 206	Dunkin'
unit 301	Nail Pro
unit 302	1,289 sf
unit 303	Chicora Hair
unit 304/305/306	Rack Room Shoes
unit 307	Coin Laundry
unit 308	2,600 sf
unit 309	1,500 sf
unit 310	Rosie's Pizzeria
unit 400	Ulta Beauty
unit 501	Petco
unit 502	T.J. Maxx
unit 600	Publix
unit 601	Smoothie King



7 minutes

- 9,049
2023 Population
- 9,353
2028 Population
- \$76,897
Median Household Income
- 56.3
Median Age

10 minutes

- 15,035
2023 Population
- 15,543
2028 Population
- \$80,418
Median Household Income
- 59
Median Age

Source: ESRI 2023

**carolina
retail
experts**
concept to
community

Lindsey Halter, CCIM
 864 270 2089
 lindsey@cre.expert

Taylor Boyd
 854 842 9842
 taylor@cre.expert

John Orr, CCIM
 854 900 3390
 john@cre.expert

We obtained the information above from sources we believe to be reliable. However, we have not verified its accuracy and make no guarantee, warranty or representation about it. It is submitted subject to the possibility of errors, omissions, change of price, rental or other conditions, prior sale, lease or financing, or withdrawal without notice. We include projections, opinions, assumptions or estimates for example only, and they may not represent current or future performance of the property. You and your tax and legal advisors should conduct your own investigation of the property and transaction.