

HAIKU RESTAURANT/COMMERCIAL KITCHEN

824 Kokomo Road, Haiku, Maui Hawaii \$1,399,000 fee simple



PROPERTY DESCRIPTION

Owner user or investment opportunity for a small restaurant, food service, commercial kitchen or bar. 2 buildings with onsite parking and outdoor lanai areas. Walking distance to Haiku Town Center, Aloha Aina Center, Nuka, and the Haiku Town Acres subdivision.

\$1,399,000 fee simple

PROPERTY HIGHLIGHTS

- Former Toohey's Butchery & Bistro
- Building 1: 1,044 sf interior + 352 sf covered lanai
- Building 2: 743 sf interior w/ outdoor area
- On site parking
- Improved for a small restaurant with covered and outside seating areas
- Rare opportunity to own a commercial property in Haiku
- Zoned Business Country Town (B-CT)



GREG SHEEHAN, R(B)

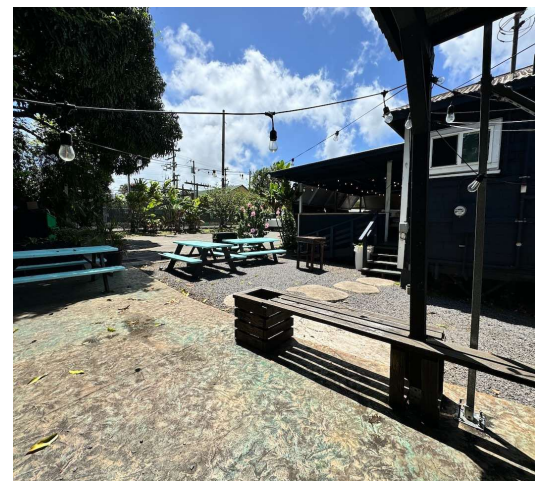
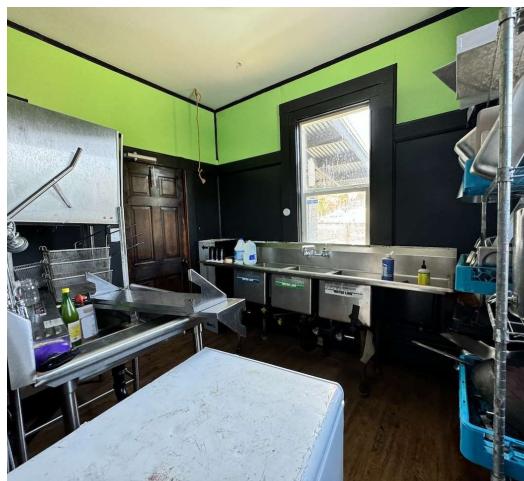
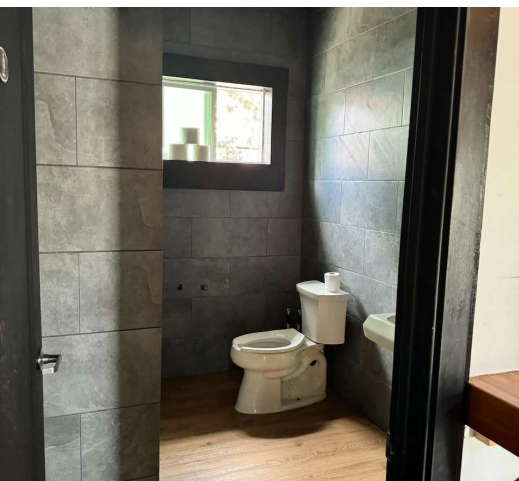
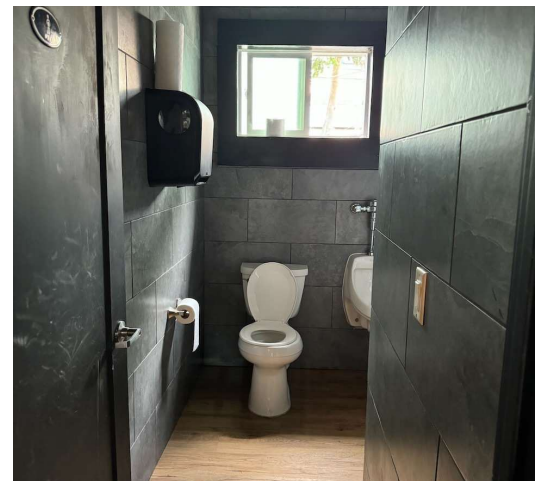
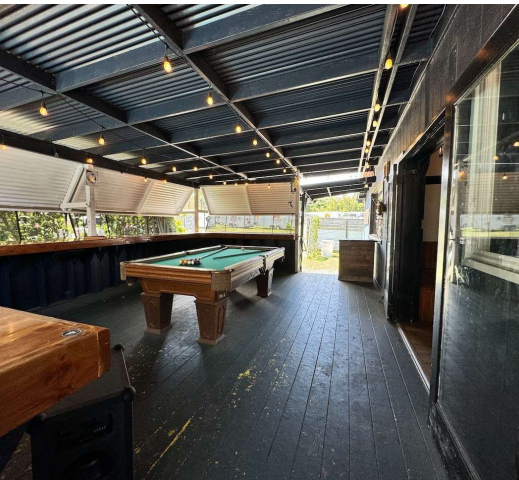
Principal Broker
808.250.0900
gsheehan@mauibiz.com



COMMERCIAL PROPERTIES
OF MAUI

HAIKU RESTAURANT/COMMERCIAL KITCHEN

824 Kokomo Road, Haiku, Maui Hawaii



GREG SHEEHAN, R(B)

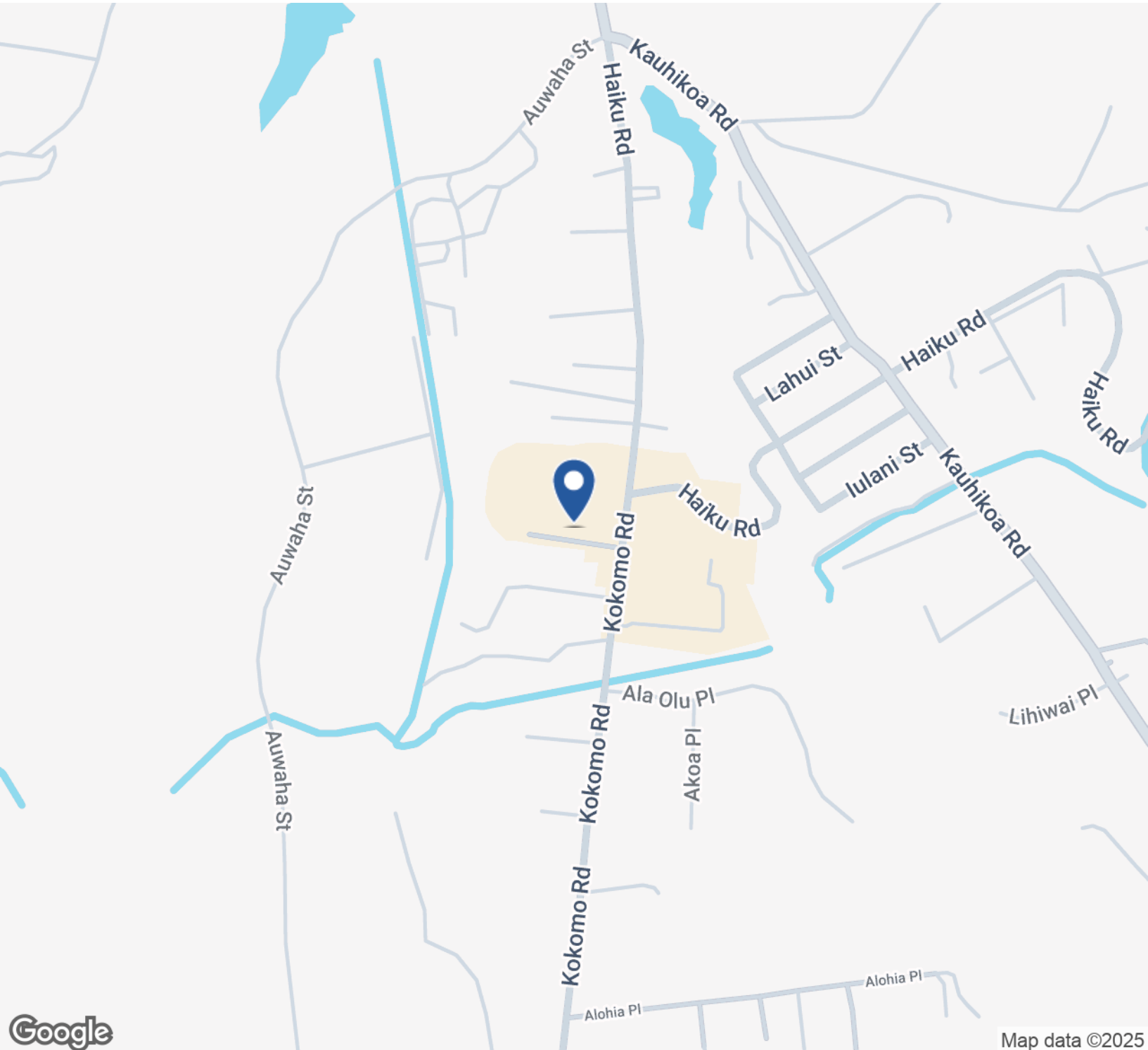
Principal Broker
808.250.0900
gsheehan@mauibiz.com



COMMERCIAL PROPERTIES
OF MAUI

HAIKU RESTAURANT/COMMERCIAL KITCHEN

824 Kokomo Road, Haiku, Maui Hawaii



GREG SHEEHAN, R(B)

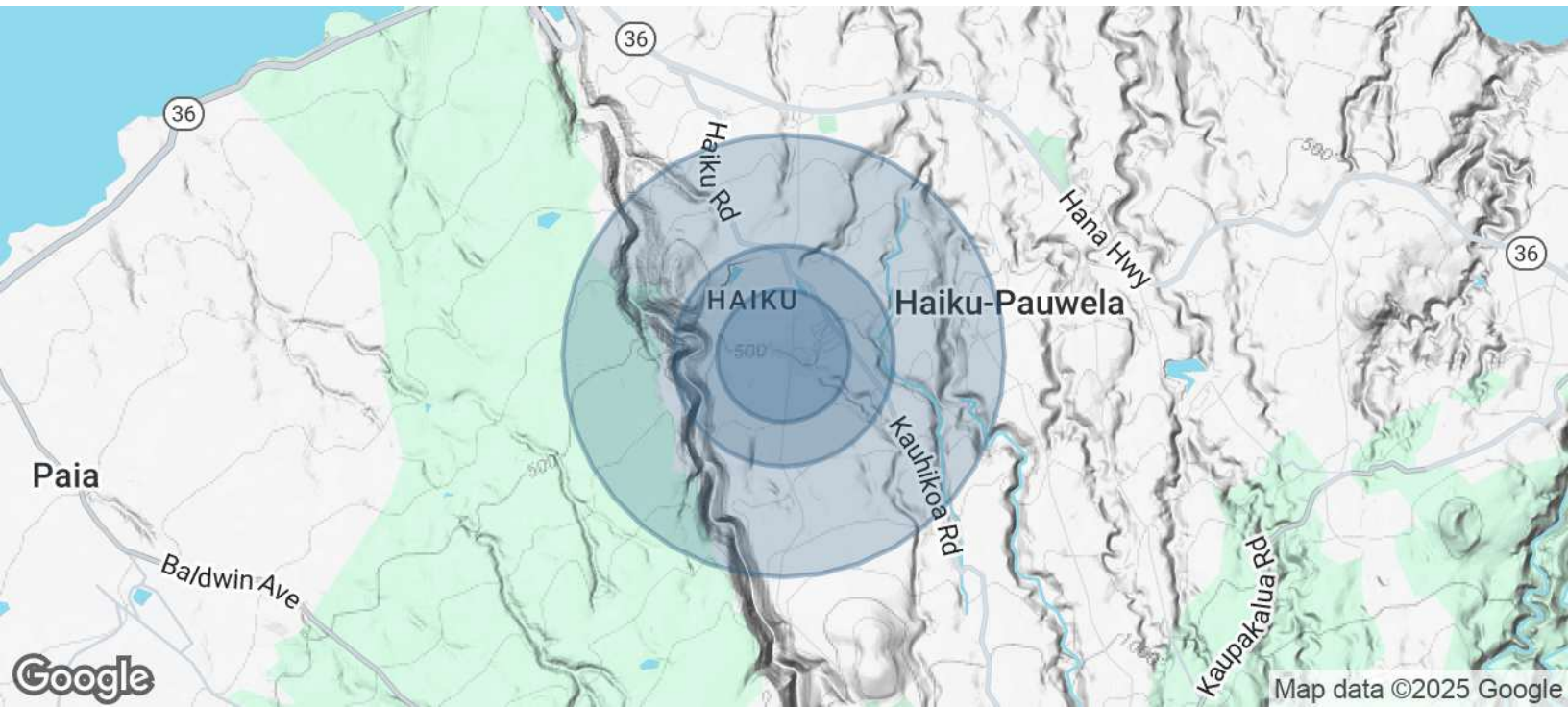
Principal Broker
808.250.0900
gsheehan@mauibiz.com



COMMERCIAL PROPERTIES
OF MAUI

HAIKU RESTAURANT/COMMERCIAL KITCHEN

824 Kokomo Road, Haiku, Maui Hawaii



POPULATION	0.3 MILES	0.5 MILES	1 MILE
Total Population	339	948	2,389
Average Age	43	42	42
Average Age (Male)	42	41	41
Average Age (Female)	44	43	43

HOUSEHOLDS & INCOME	0.3 MILES	0.5 MILES	1 MILE
Total Households	124	351	888
# of Persons per HH	2.7	2.7	2.7
Average HH Income	\$110,924	\$105,838	\$101,147
Average House Value	\$1,144,493	\$1,120,893	\$1,097,049

Demographics data derived from AlphaMap

GREG SHEEHAN, R(B)

Principal Broker
808.250.0900
gsheehan@mauibiz.com



COMMERCIAL PROPERTIES
OF MAUI