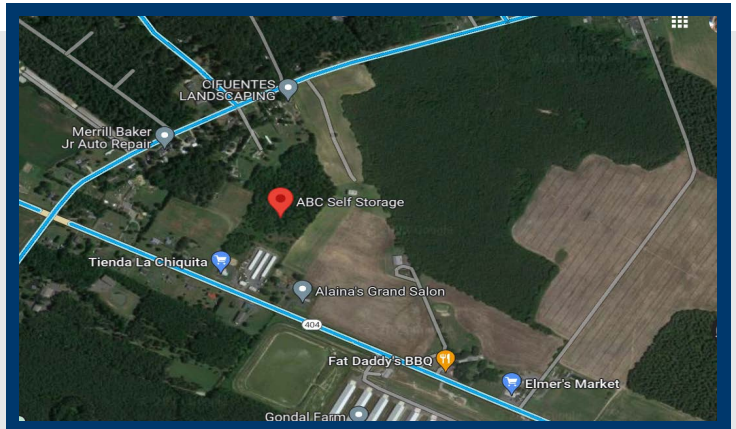




FOR SALE

20460 High Meadow Ln.
GEORGETOWN, DE
19947



ABOUT R&R

ESTABLISHED IN 1996, R&R COMMERCIAL REALTY IS ONE OF DELMARVA'S PREEMINENT REAL ESTATE BROKERAGES. WITH A LONG HISTORY OF CLOSED DEALS AND SATISFIED CUSTOMERS, THE FIRM HAS BUILT ITS FOUNDATION ON THE BEDROCK OF PROVEN PERFORMANCE.



Keith Walpole (C) 302-236-7053

46 South State Street
Dover, Delaware 19901
info@randrcommercialrealty.com

(302) 674-3400 (302) 674-8479

Key Details:

- Partially Wooded
- 9.21.00 +/- Acres
- Zoned: AR-1
- MLS # DESU2037936
- Price: \$489,000.
- Call for Details!