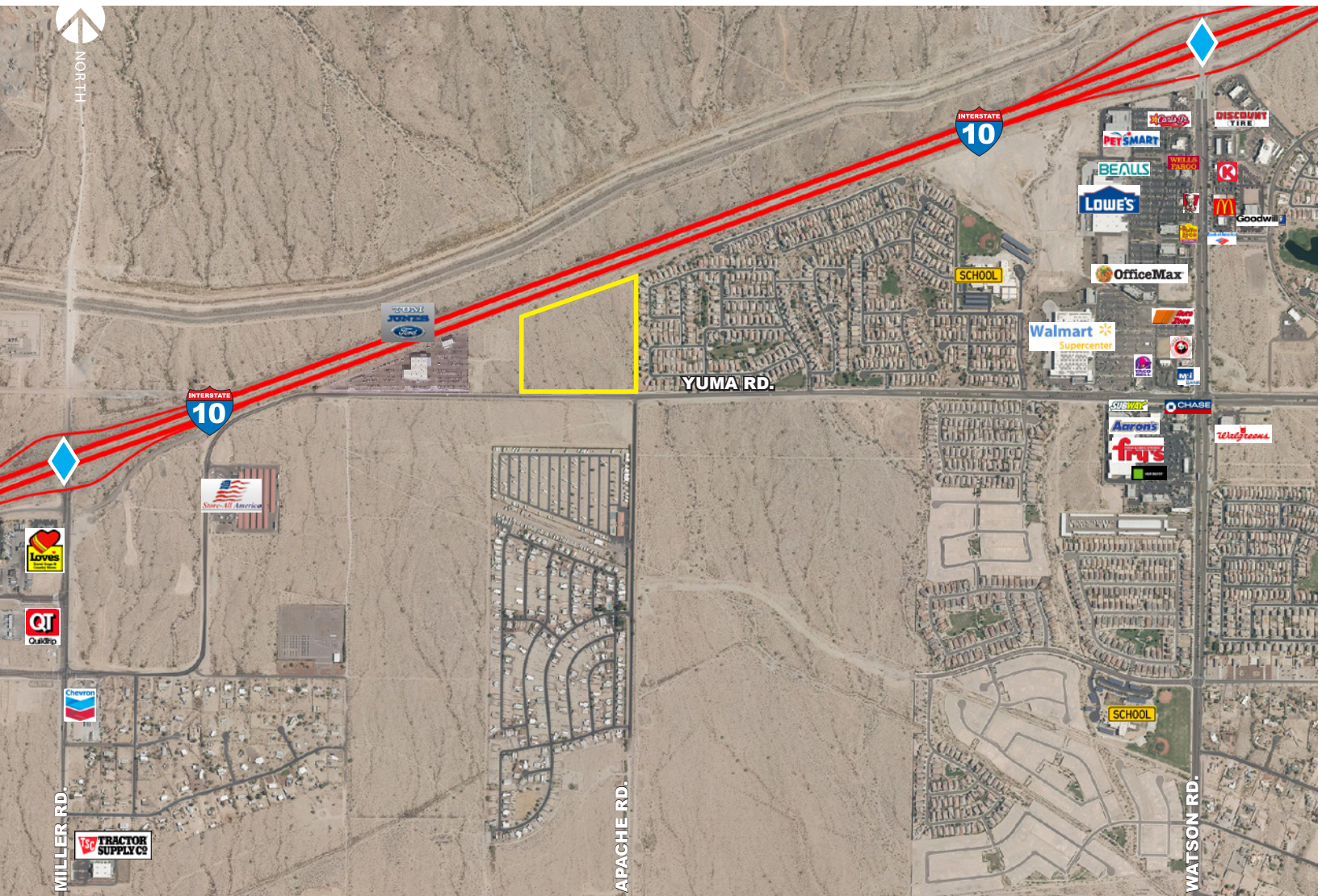


NWC of YUMA & Apache Road Buckeye, Arizona

FOR SALE: 23.7 ACRES

www.learizona.com



FOR MORE INFORMATION
PLEASE CONTACT:

MARK LINSALATA, SIOR
PRINCIPAL
602.912.3539
mlinsalata@learizona.com

NATE BUBECK
PRINCIPAL
602.954.3767
nbubeck@learizona.com

3200 East Camelback Road
Suite 100
Phoenix, Arizona 85018
602.956.7777

FEATURES:

- Total site: ±23.7 acres
- Divisible to ±1.0 acres
- Proximity to over 700,000 SF of retail product
- Zoned - CMP - Employment (Community Master Plan)
- Part of the Sundance Master Plan
- Excellent freeway visibility
- Water and Sewer capacity is reserved under the Sundance CMP and stubbed to the site
- **\$6,200,000 (\$6.00/SF)**

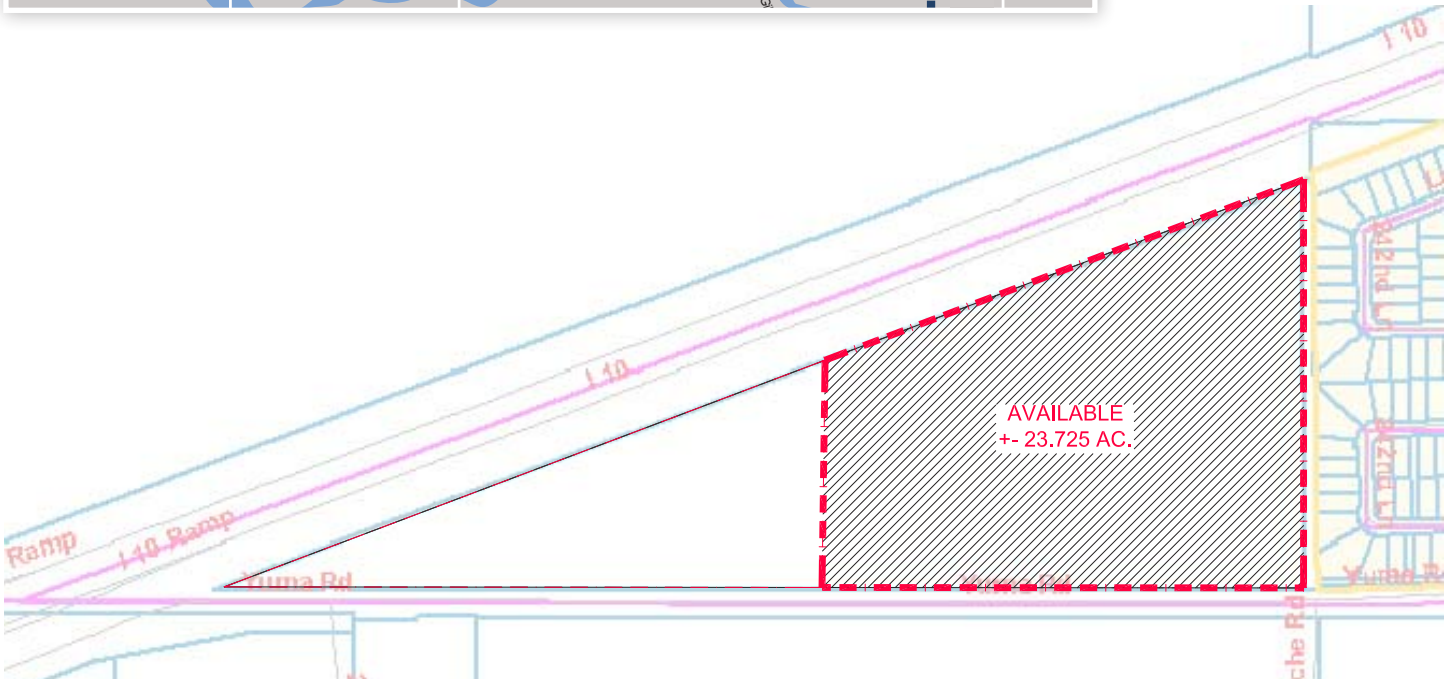


All information furnished regarding property for sale, rental or financing is from sources deemed reliable, but no warranty or representation is made to the accuracy thereof and same is submitted to errors, omissions, change of price, rental or other conditions prior to sale, lease or financing or withdrawal without notice. No liability of any kind is to be imposed on the broker herein.

NWC of YUMA & Apache Road Buckeye, Arizona

FOR SALE: 23.7 ACRES

www.learizona.com



SITE PLAN



All information furnished regarding property for sale, rental or financing is from sources deemed reliable, but no warranty or representation is made to the accuracy thereof and same is submitted to errors, omissions, change of price, rental or other conditions prior to sale, lease or financing or withdrawal without notice. No liability of any kind is to be imposed on the broker herein.