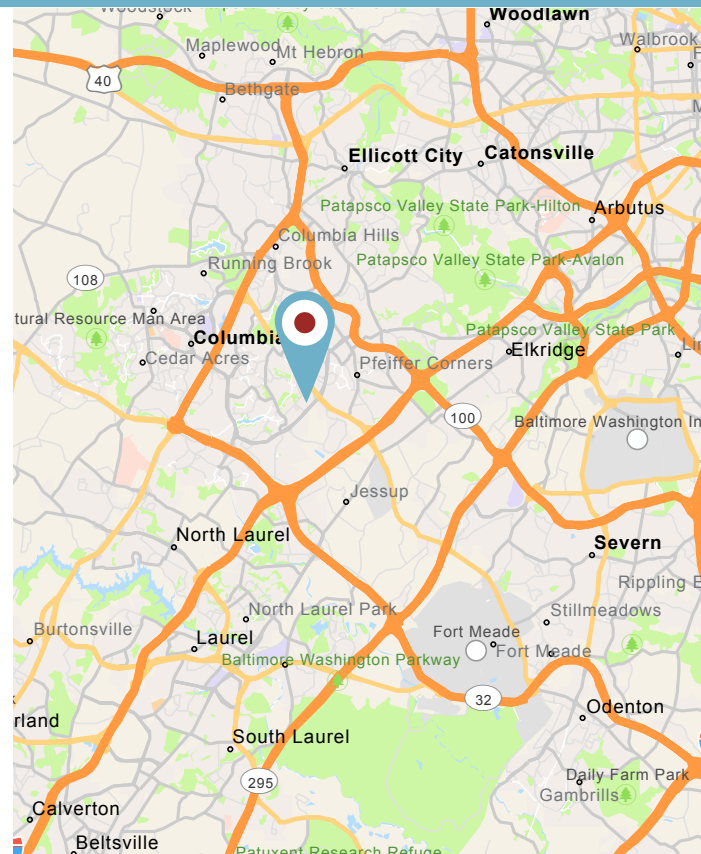




PROPERTY HIGHLIGHTS:

- **Available:** Suite 3400 - 3,295 square feet
- **Rental Rate:** \$21.95 psf, Full Service
- **Term:** Through September, 2025
- **Condition:** Newly delivered space with furniture included
- Brand new kitchenette within the unit
- Newly renovated lobby and gym facility
- Abundant surface parking
- 88-acre park featuring Class A office and retail, located one mile from I-95 with easy access to Route 29 & Route 175

NEARBY AMENITIES

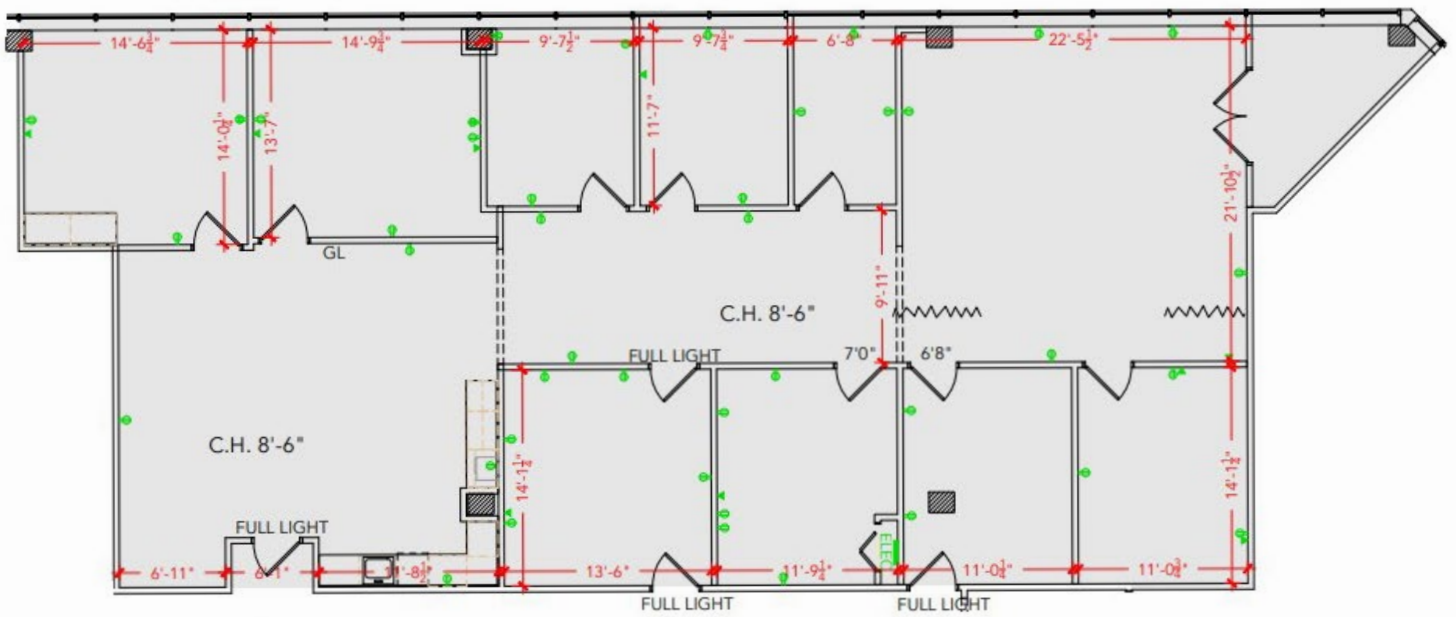


8850 STANDFORD BLVD

Suite 3400, Columbia MD 21045 | Howard County



FLOOR PLAN



3,295 SF
Suite 3400

DEMOGRAPHICS | 3 MILE



POPULATION
92,262



HOUSEHOLDS
35,200



MEDIAN HH INCOME
\$112,640



MEDIAN AGE
39



DAYTIME EMPLOYEES
75,998

Austin Eber
aeber@klnb.com
443-574-1414

Chuck Breitenother
cbreitenother@klnb.com
443-574-1433

While we have no reason to doubt the accuracy of any of the information supplied, we cannot, and do not, guarantee its accuracy. All information should be independently verified prior to a purchase or lease of the property. We are not responsible for errors, omissions, misuse, or misinterpretation of information contained herein and make no warranty of any kind, express or implied, with respect to the property or any other matters.