

27060-27080

TROLLEY INDUSTRIAL DR.
TAYLOR, MICHIGAN

INDUSTRIAL FOR LEASE
13,600 Square Feet Available



**SIGNATURE
ASSOCIATES**
KNOW SIGNATURE | KNOW RESULTS

TROLLEY COMMERCE CENTER



PROPERTY FEATURES

- 13,600 square feet available
- 2,000 square feet of office
- 22' clear height
- (4) truckwells
- Zoned I-2
- One of Four Buildings in Trolley Commerce Center
- I-94 Exposure and Access
- Minutes to Detroit Metropolitan Airport and other major freeways
- Heavy zoning, trailer parking and good clear height to accommodate many uses
- Lease Rate: \$7.95/sq.ft. NNN



For more information, please contact:

BRAD VIERGEVER
(248) 799 3146
bviergever@signatureassociates.com

CHRIS MONSOUR
(248) 948 0107
cmonsour@signatureassociates.com

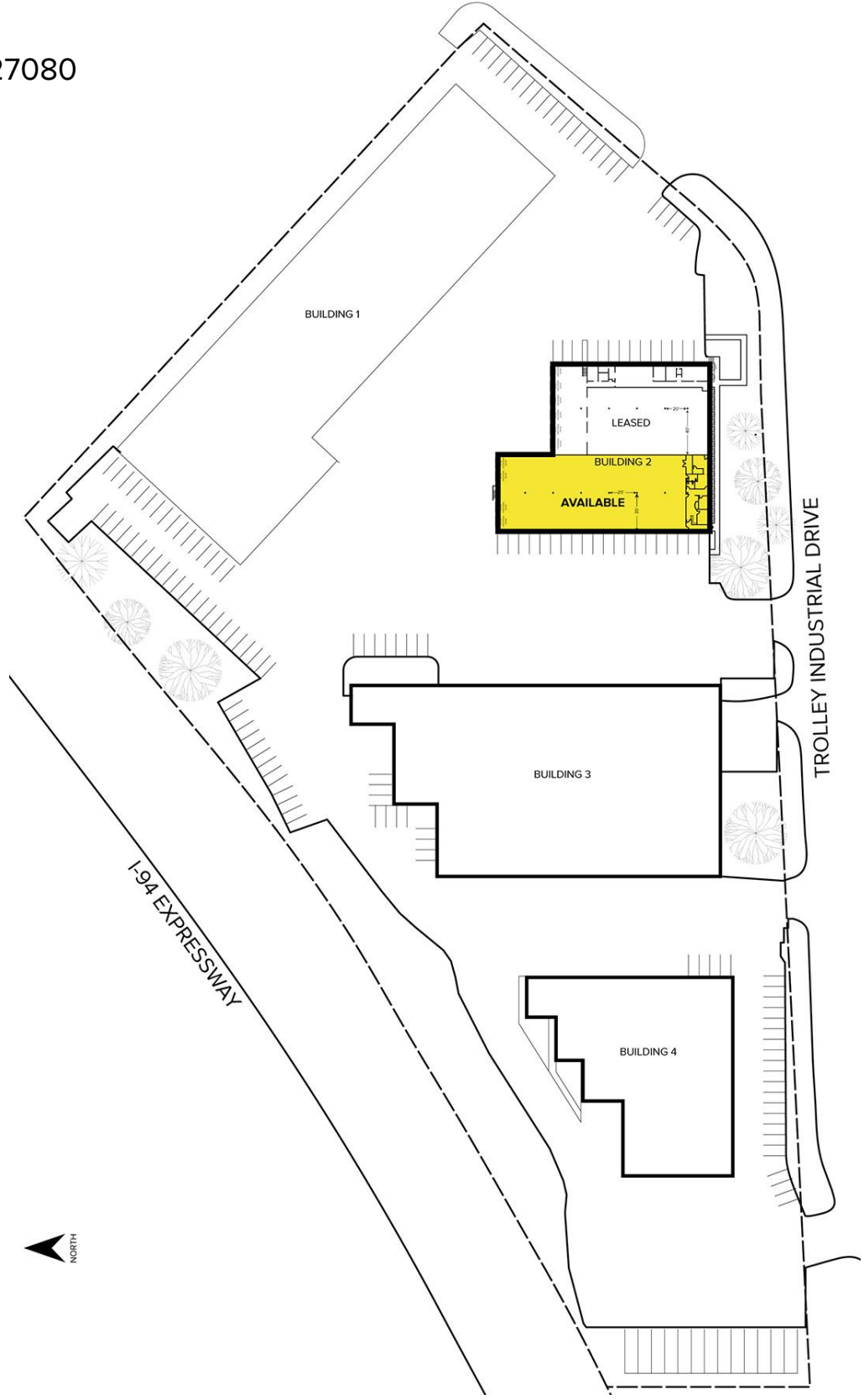
SIGNATURE ASSOCIATES
One Towne Square, Suite 1200
Southfield, MI 48076
www.signatureassociates.com

27060-27080 Trolley Industrial Dr. – Taylor, Michigan

Industrial For Lease

13,600
Square Feet
AVAILABLE

Site Plan - #27080



For more information, please contact:

BRAD VIERGEVER
(248) 799 3146
bviergever@signatureassociates.com

CHRIS MONSOUR
(248) 948 0107
cmonsour@signatureassociates.com

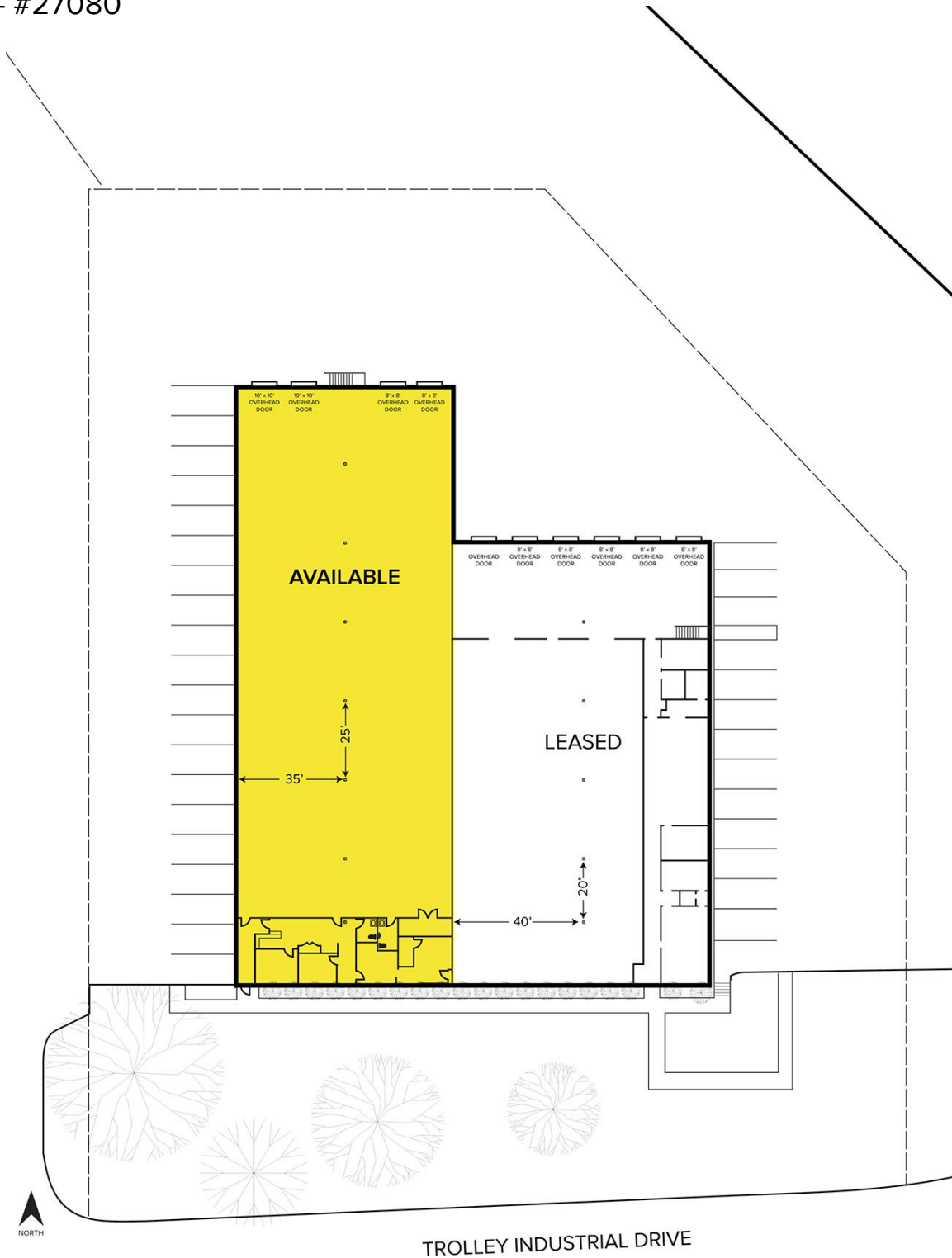
SIGNATURE ASSOCIATES
One Towne Square, Suite 1200
Southfield, MI 48076
www.signatureassociates.com

27060-27080 Trolley Industrial Dr. – Taylor, Michigan

Industrial For Lease

13,600
Square Feet
AVAILABLE

Floor Plan - #27080



For more information, please contact:

BRAD VIERGEVER
(248) 799 3146
bviergever@signatureassociates.com

CHRIS MONSOUR
(248) 948 0107
cmonsour@signatureassociates.com

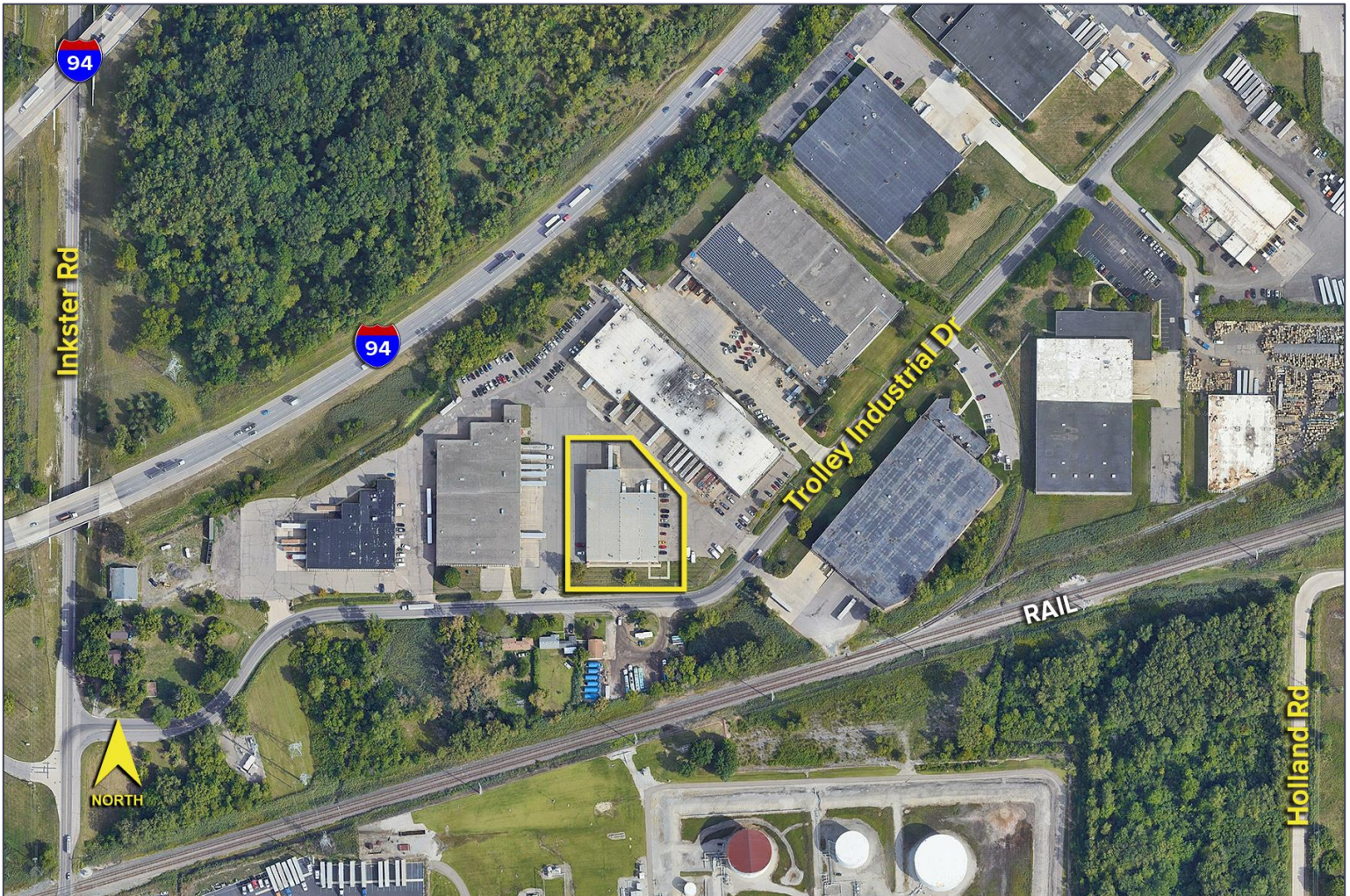
SIGNATURE ASSOCIATES
One Towne Square, Suite 1200
Southfield, MI 48076
www.signatureassociates.com

27060-27080 Trolley Industrial Dr. – Taylor, Michigan

Industrial For Lease

13,600
Square Feet
AVAILABLE

Aerial



For more information, please contact:

BRAD VIERGEVER
(248) 799 3146
bviergever@signatureassociates.com

CHRIS MONSOUR
(248) 948 0107
cmonsour@signatureassociates.com

SIGNATURE ASSOCIATES
One Towne Square, Suite 1200
Southfield, MI 48076
www.signatureassociates.com