



River Realty Services

COMMERCIAL DIVISION



5512 Route 9W, Marlboro, NY 12542

Motorcycle & ATV Sales and Repairs
8 Acres of Land

ORANGE COUNTY, NEW YORK

BIG BOYZ TOYS

Established ATV and Motorcycle Sales & Repairs

BUSINESS FOR SALE

Description: BIG BOYZ TOYS. Long established motorcycle and ATV sales and repair shop with very profitable business selling Kawasaki Artic Cat, Kimco, Stark, Buel, Argo and Generac generators. Also all electric motorcycles from Spain. Only local dealer in the entire area selling these 80 horse power bikes. All inventory sold separately.

ASKING: \$600,000

SHOWROOM / WAREHOUSE / AUTO REPAIRS

On 8 Acres of Land | Route 9W

(\$18,000 AADT)

On 8 acres of land total. Front comprised of approx. 1 acre of commercial zoning for the business and approx. 5 acres of residentially zoned land for future development.

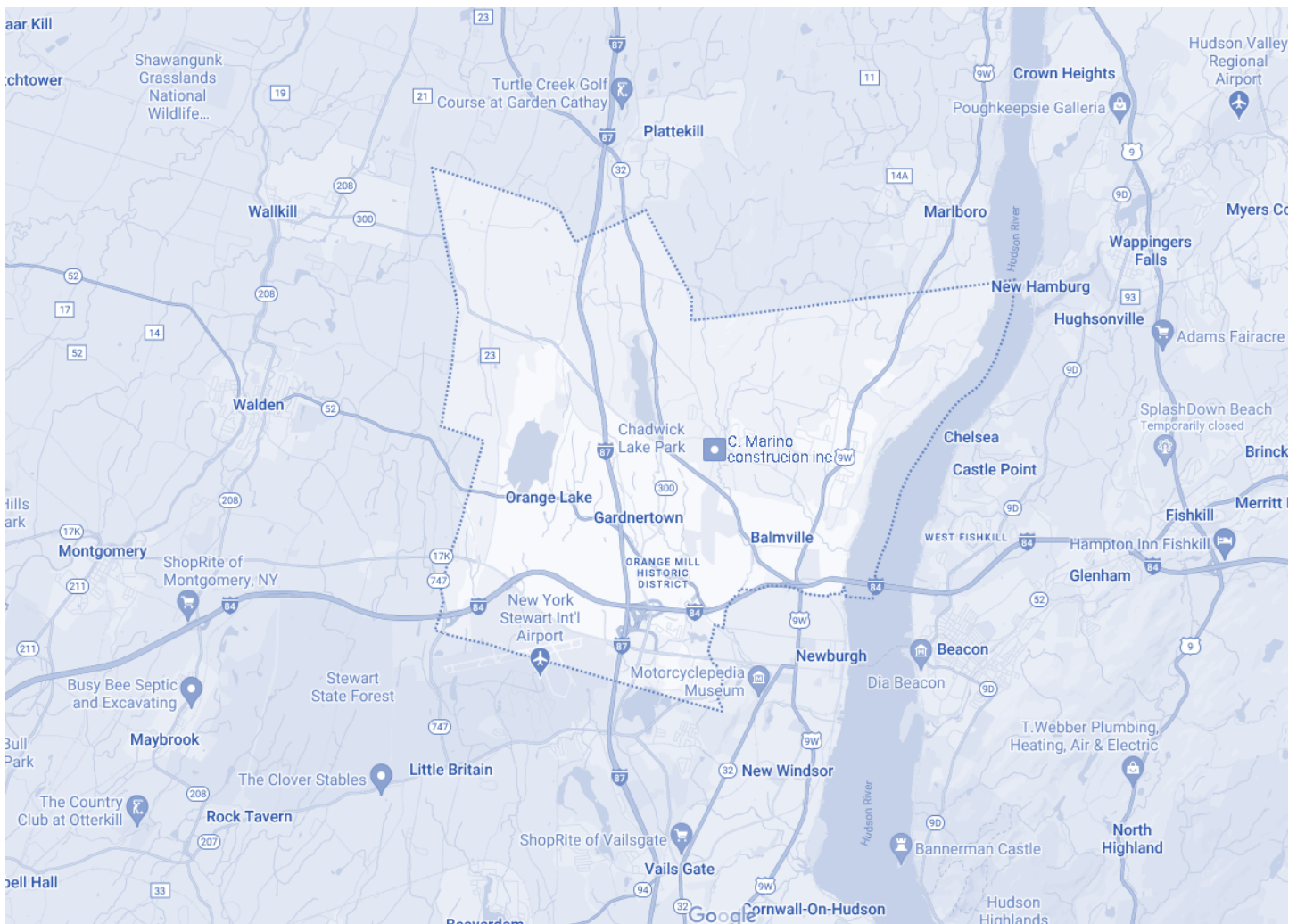
♦ Total Sq.ft.: 8400	♦ Site / Acreage: 7.90
♦ Built: 1974	♦ ~1 Acre Zoned Commercial (B)
♦ Zoning: B & AR	♦ ~5 Acres Residentially Zoned (AR)
♦ SBL: 8-1-33.2	♦ Taxes: ~\$28,000

ASKING: \$1,650,000

TOWN OF NEWBURGH

Newburgh (/ˈnuːbɜːrg/) is a town in Orange County, New York, United States. It forms part of the Poughkeepsie—Newburgh—Middletown metropolitan area, which is a part of the New York metropolitan area, and is a suburban satellite of the urbanized city of Newburgh. The city of Newburgh was a part of the town prior to 1865. New York Stewart International Airport is partially located within the township, and much of the land into which it could have been expanded has been turned into Stewart State Forest.

As of the 2020 census, the population of the town is 31,985. The 2010 census determined the population was 29,801, marking the first time ever that the population of the town of Newburgh officially exceeded that of the neighboring city of Newburgh (with a population of 28,866).[2] Estimates released by the U.S. Census Bureau during 2018 show the Newburgh township's population exceeded 30,000.[3] As of 2020 the town and neighboring city of Newburgh had a combined population of 60,842.



DEMOGRAPHICS | MARLBORO, NY

Attribute Summary for Marlboro ⓘ

Median Household Income
\$91,416

Source - 2022 Income (Esri)

Median Age
43.5

Source - 2022 Age: 5 Year Increments (Esri)

Total Population
5,796

Source - 2022 Key Demographic Indicators (Esri)

1st Dominant Segment
Green Acres

Source - 2022 Tapestry Market Segmentation (Households)



Total Population ⓘ



Population Density ⓘ



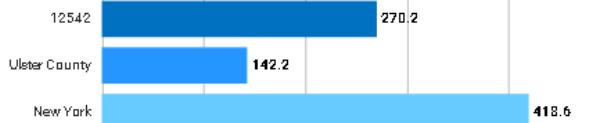
Population Change ⓘ



Total Daytime Population ⓘ



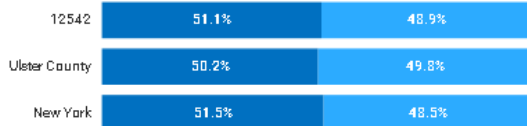
Daytime Population Density ⓘ

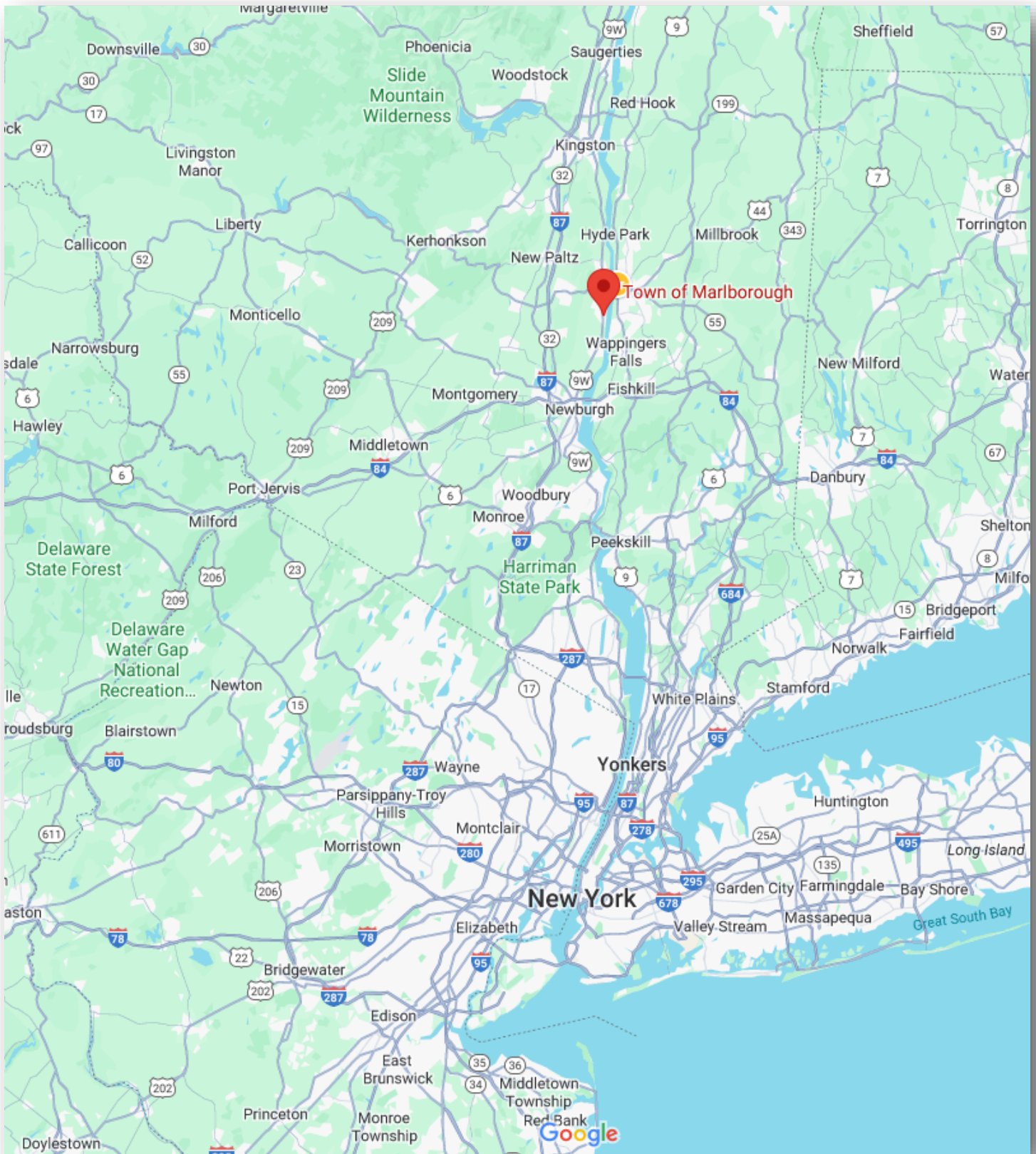


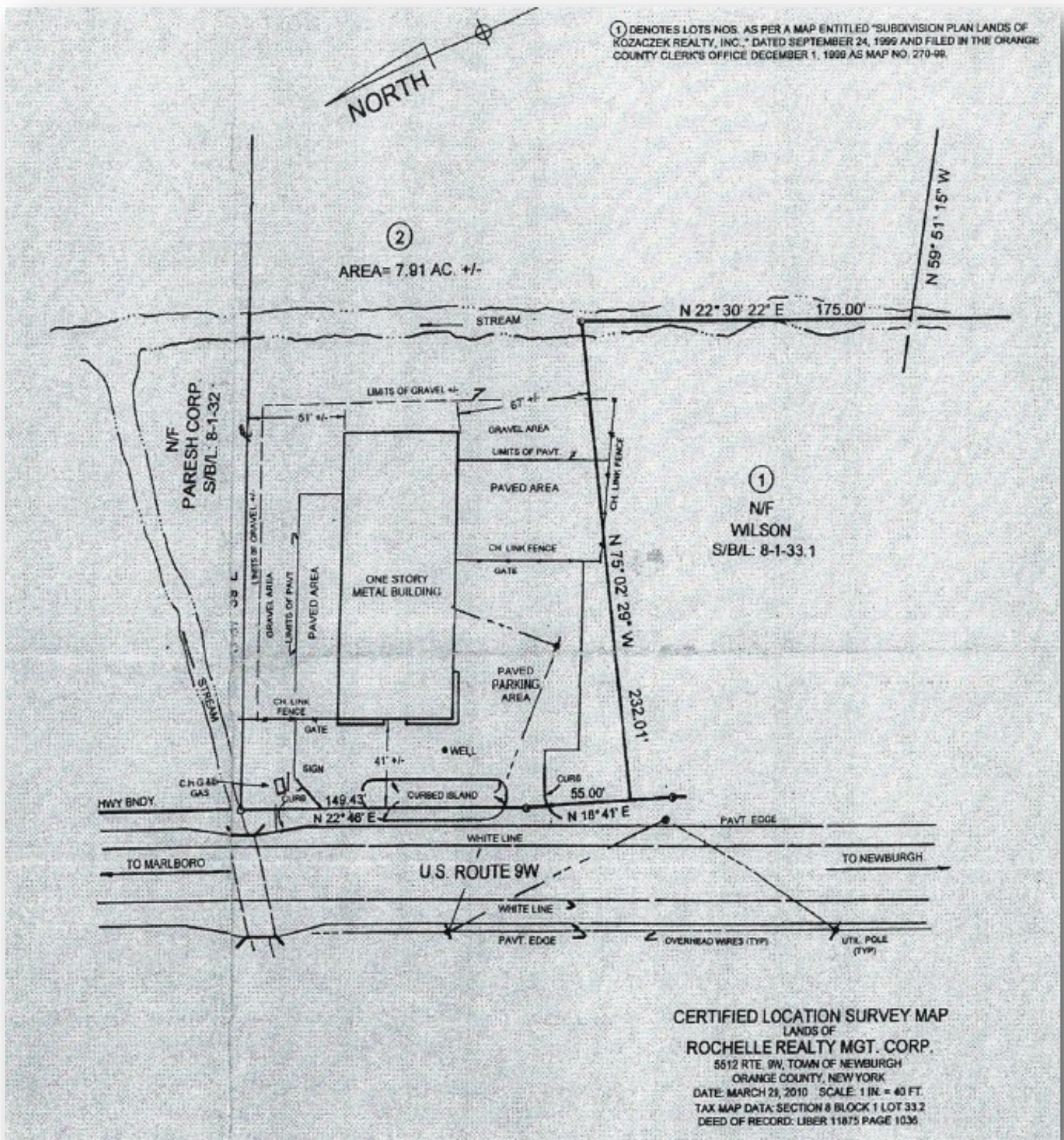
Average Household Size ⓘ

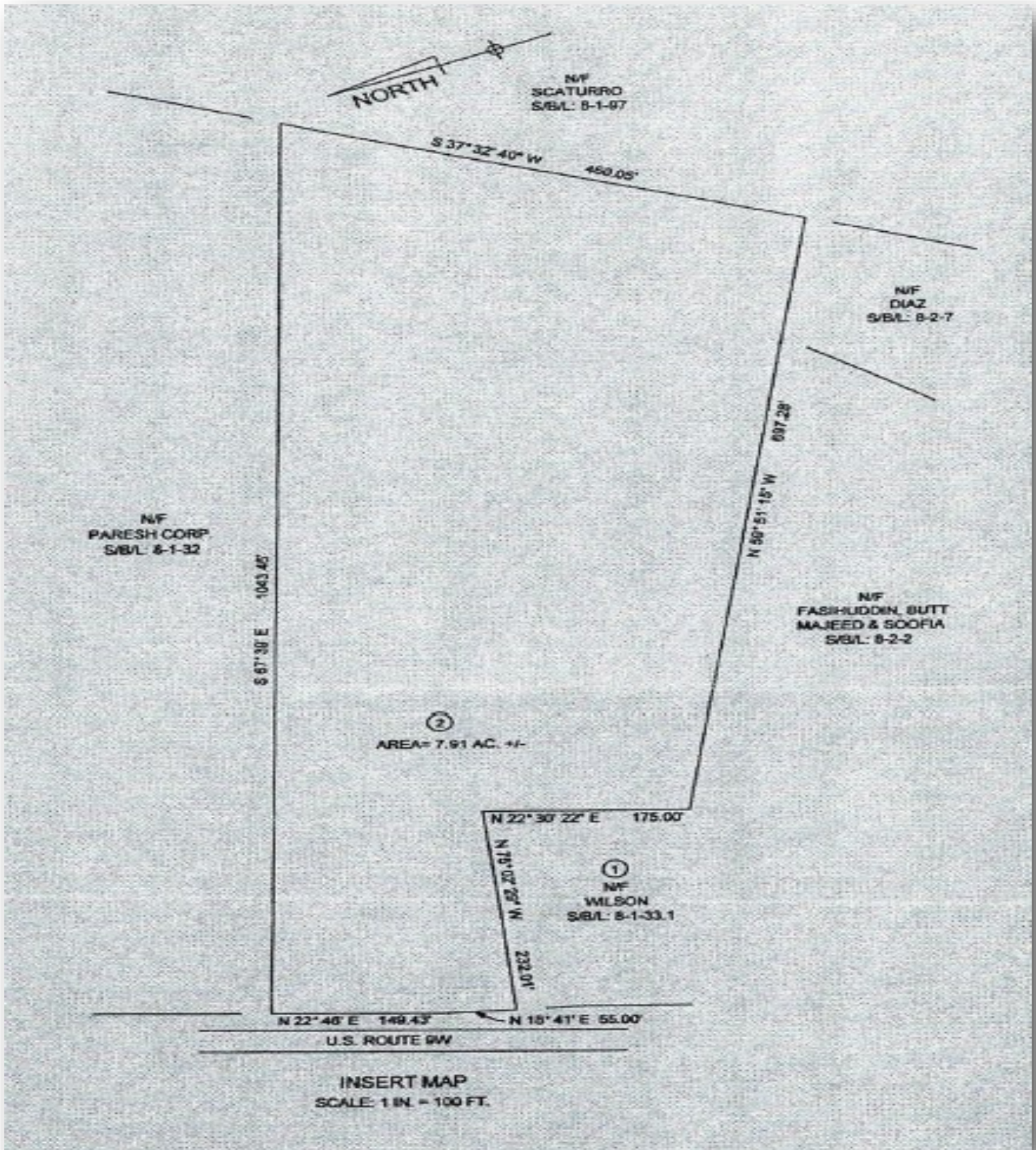


Female / Male Ratio ⓘ

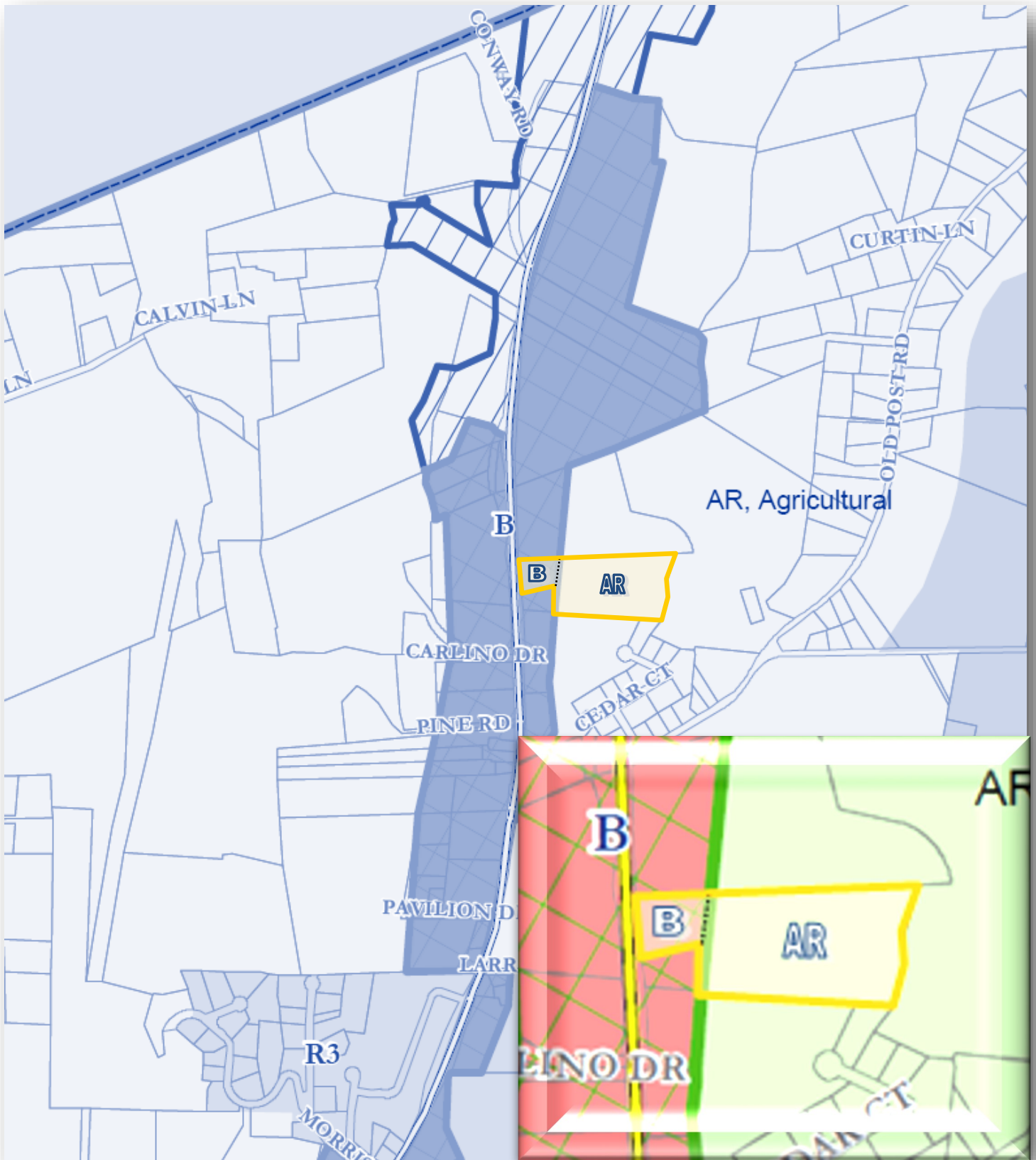












**Table of Use and Bulk Requirements
AR District -- Schedule 2**

[Amended 9-23-1998 by L.L. No. 10-1998; 4-8-2000 by L.L. No. 2-2000; 4-9-2018 by L.L. No. 3-2018; 1-23-2023 by L.L. No. 1-2023]

A. Accessory Uses	B. Permitted With	C. Permitted Uses	D. Uses Subject to Site Plan Review by the Planning Board	Lot Area (square feet)
1. Home occupations ³	C1-3, D1 and 2	1. Single-family dwellings, not to exceed 1 dwelling unit per lot		40,000
2. Private garage or carport for not more than 4 vehicles	C1-3 and 5 D1-12	2. (Reserved)		
3. Garden house, toolshed, wading or swimming pool or tennis court in accordance with § 185-43	C1-3 D1-3, 10-12	3. (Reserved)		
4. Signs in accordance with § 185-14	C1-3, D1, 2 and 8 C4, D4-7, 11, 12 C3-5, D1-12, C3-5, D1-12, D15	4. Municipal buildings and town activities		NA
		5. Agricultural operations, as follows: a. Growing of field, greenhouse and garden crops, vineyards, orchards and nurseries		40,000
		b. Keeping of livestock		20 acres
		c. Keeping of fowl		10 acres
5. Keeping up to 5 (total) dogs or cats over 6 months of age	C1-3 and 5 D1-3, 8-12		1. Cluster developments for single-family dwellings in accordance with § 185-26	NA
6. Keeping up to 2 domestic animals, excepting dogs and cats, and up to 25 fowl on lots of 2 acres or more	C1-3 and 5 D1, 3-9		2. Membership clubs in accordance with § 185-29: a. Providing outdoor recreational facilities	10 acres
7. Off-street parking as required by the principal use	All		b. Providing nonrecreational facilities	2 acres
8. Off-street parking for commercial vehicles in accordance with § 185-13	C5 D3-9		3. Places of worship, parish houses, seminaries, convents, dormitories and related activities	
9. Separate living quarters within the permitted structure for persons employed on the premises	C1-3 and 5 D1-12		4. Nursery schools for preschool children	
10. Fuel tanks in accordance with § 185-39	C5, D6 and 7		5. Schools for general education, including colleges, with related facilities	5 acres
11. Satellite earth stations in accordance with § 185-40	C1-5 D1-12		6. Hospitals and nursing homes for general medical care	2 acres
12. Accessory apartments in accordance with § 185-38 ³	C1 D1 and 2		7. Veterinarians' offices, in accordance with § 185-45	10 acres
13. Barns, silos, produce-storage structures and packing warehouses not within 50 feet of any lot line	C5, D15		8. Commercial kennels	20 acres
14. Seasonal roadside stands in accordance with § 185-44	C5		9. Mobile home courts, in accordance with § 185-23	60,000
			10. Community residence for the disabled	NA
			11. Substance abuse rehabilitation home	100,000
			12. Public utility structures and rights-of-way	100,000/ 50,000 ¹
			13. 2-family dwellings, not to exceed 2 dwelling units per lot	100,000
			14. Semidetached dwellings, not to exceed 2 dwelling units per lot	100,000
15. Outdoor storage of farm equipment in other than a front yard	C5, D15		15. Cannabis Microbusiness Premises in accordance with § 185.48.9	100,000
16. Veterinarians' offices in accordance with § 185-45	D9			
17. Nursery school or day care	D1			

5512 Route 9W, Marlboro, NY 12542



Disclosure Information

This is a confidential memorandum intended solely for personal limited use in considering whether to pursue negotiations to purchase or lease real property referenced herein. It is not intended to be an offer or any part of a contract to lease or sell the property. The property is being listed in an "AS-IS, WHERE-IS" condition and both Seller and Agents make no representations or warranties as to the accuracy of the information within. This confidential memorandum which contains brief selected information pertaining to the business and affairs of the Property has been prepared by River Realty Services, Inc. This memorandum does not purport to be all-inclusive or to contain all the information, which a prospective purchaser may desire. Neither Owner nor River Realty Services, Inc., nor any of their officers, employees or agents make any representation or warranty, expressed or implied, as to the accuracy or completeness of this memorandum or any of its contents and no legal liability is assumed or shall be implied with respect thereto. The information provided in this brochure has been gathered from sources that are deemed reliable, but neither Owner nor River Realty Services, Inc. warrants or represents that the information is true or correct. Prospective buyers are advised to verify information independently. The Owner reserves the right to change the price, or any information in this brochure or withdraw the property from the market at any time without notice. By acknowledgement of your receipt of this confidential memorandum, you agree that the memorandum and its contents are confidential, that you will hold and treat it in the strictest of confidence, that you will not, directly or indirectly, disclosed or permit anyone else to disclose this memorandum or its contents to any other person, firm or entity without prior written authorization of Owner, and that you will not use or permit to be used this memorandum or its contents in any fashion or manner detrimental to the interest of the Owner. Photocopying or other duplication is prohibited as well. The terms and conditions set forth above apply to this offering memorandum in its entirety.

WWW.RIVERREALTY.COM

River Realty Services Commercial – (RRS Commercial) is a leader in commercial real estate services throughout New York’s Hudson Valley, Catskill Region and beyond. Defined by a commitment to client service, our integrated approach to property marketing considers the entire marketing cycle: targeting the right audience, positioning the property, developing comprehensive marketing materials and properly timing the sale or lease.



Your Property. Our Priority.

For more information:

Richard LiCastrì, Licensed Associate Broker

845.706.4006 direct

845.564.2800 office

e. RLicatri@riverrealty.com

w. RLicatri.riverrealty.com

117 Executive Drive, Suite 100

New Windsor, NY 12553

845.564.2800 office

845.564.0700 fax

w. riverrealty.com

