



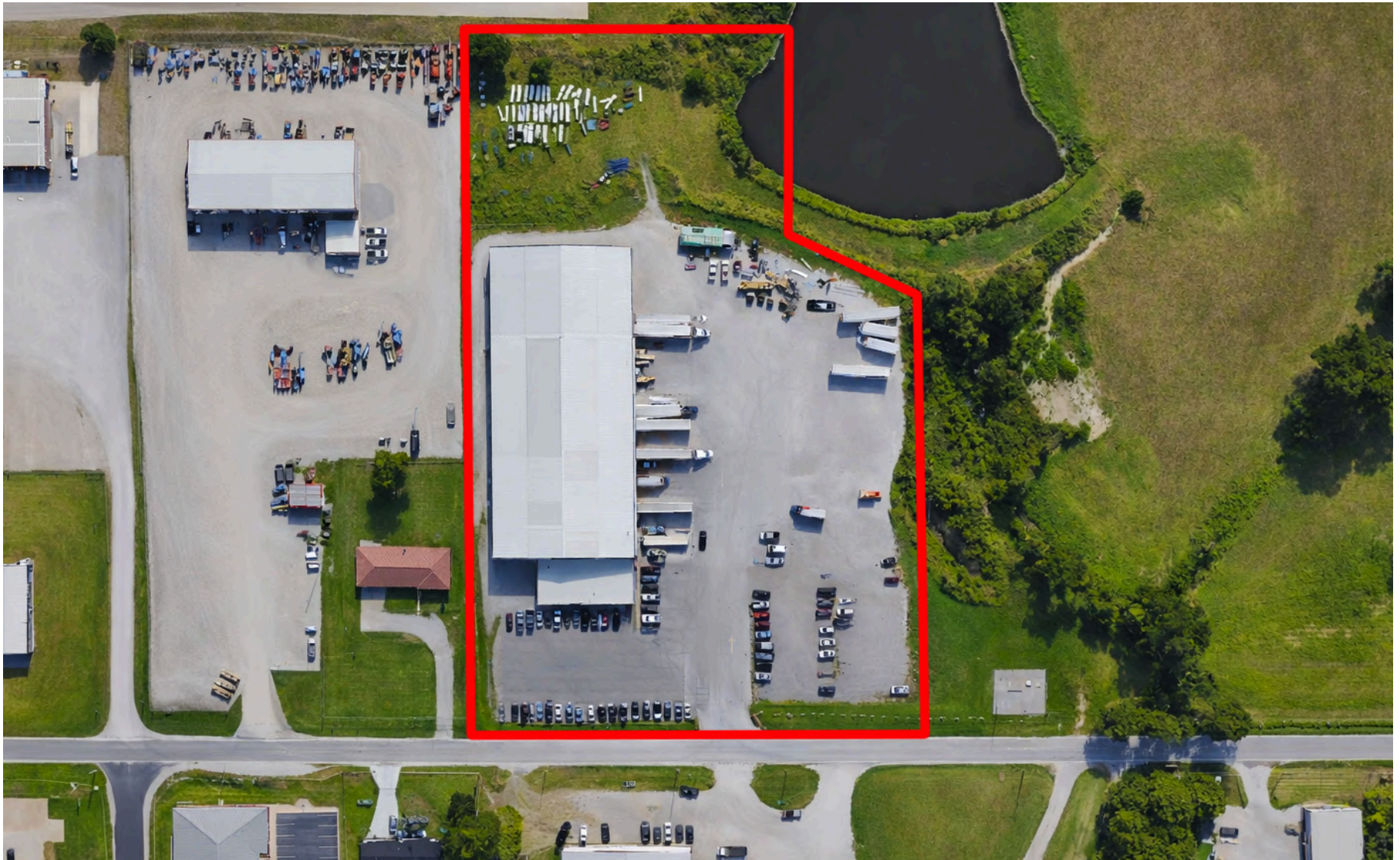
Available For Lease

**1691 N 161st E Ave,
Tulsa, OK 74116**



Property Summary

1691 N 161st E Ave, Tulsa, OK 74116 is a 40,100 SF Cold Storage / Industrial Facility situated on 5.38 acres, this versatile property offers 23' clear height, 10 dock-high doors, and 1 drive-in. Originally constructed in 2008 and renovated in 2015, the site is zoned Industrial and well-suited for logistics, food distribution, or cold storage operations.



PROPERTY SPECS

Address 1691 N 161st E Ave, Tulsa, OK 74116

Type Industrial / Cold Storage

Total SF 40,100

Acreage 5.38

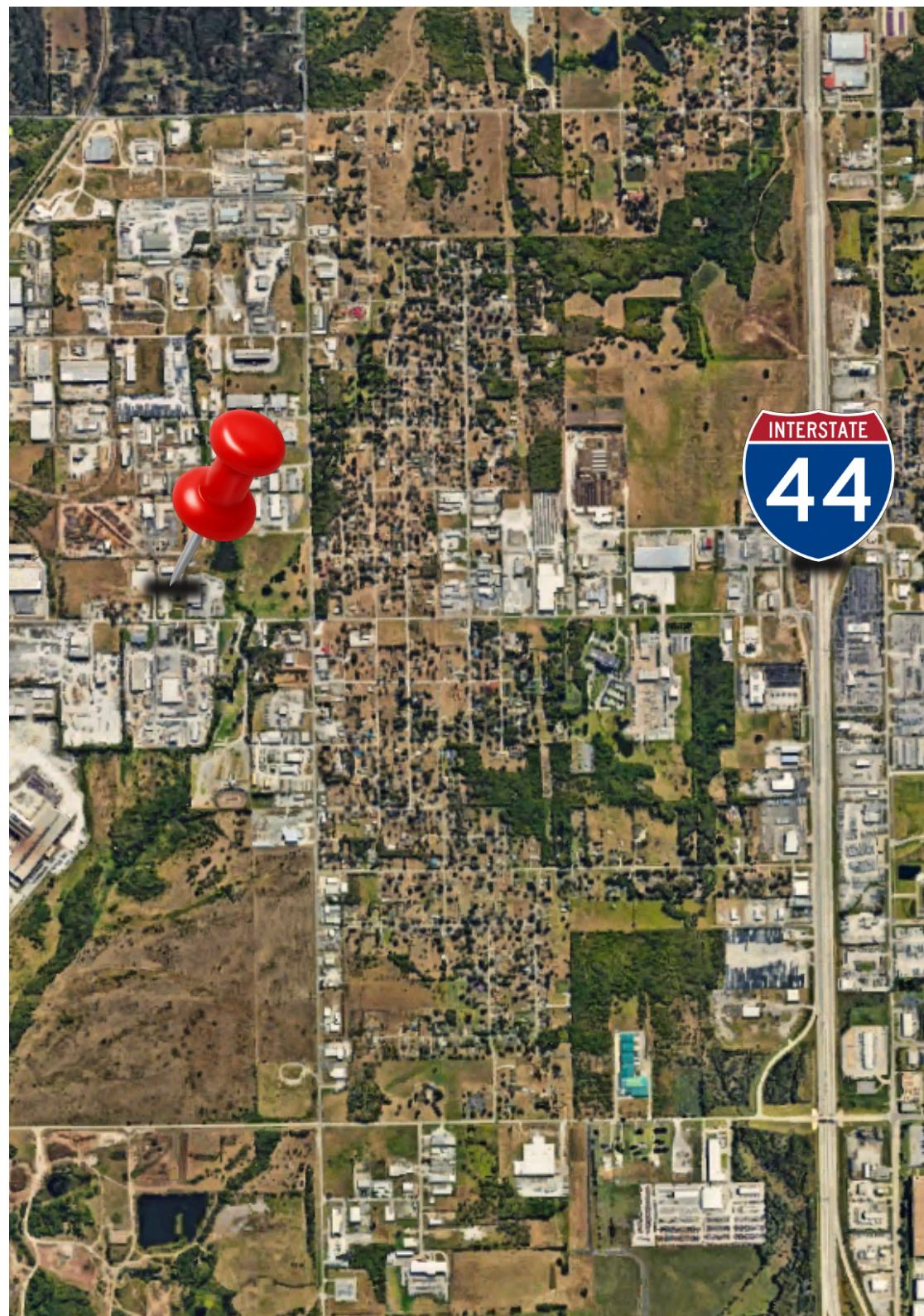
Year Built/Renovated 2008/2015

Dock Doors 10

Drive-ins 1

Clear Height 23'

Zoning Industrial







Prime Industrial Location - Tulsa, OK

1691 N 161st E Avenue is strategically positioned within Tulsa's northeastern industrial and logistics corridor, offering strong access to regional and national transportation networks. The property benefits from close proximity to US-412, I-44, and US-169, enabling efficient distribution throughout the Tulsa metro and direct connectivity to Oklahoma City, Northwest Arkansas, and the broader Central U.S. The site is located near the Port of Catoosa, one of the nation's largest inland river ports, providing unique multimodal logistics capabilities including rail, truck, and barge access. Situated near established industrial parks, major employers, and freight infrastructure, the property is well-suited for warehousing, manufacturing, logistics, and service operations, while nearby residential areas support strong workforce accessibility.

Distances

US-412 - 1 Miles

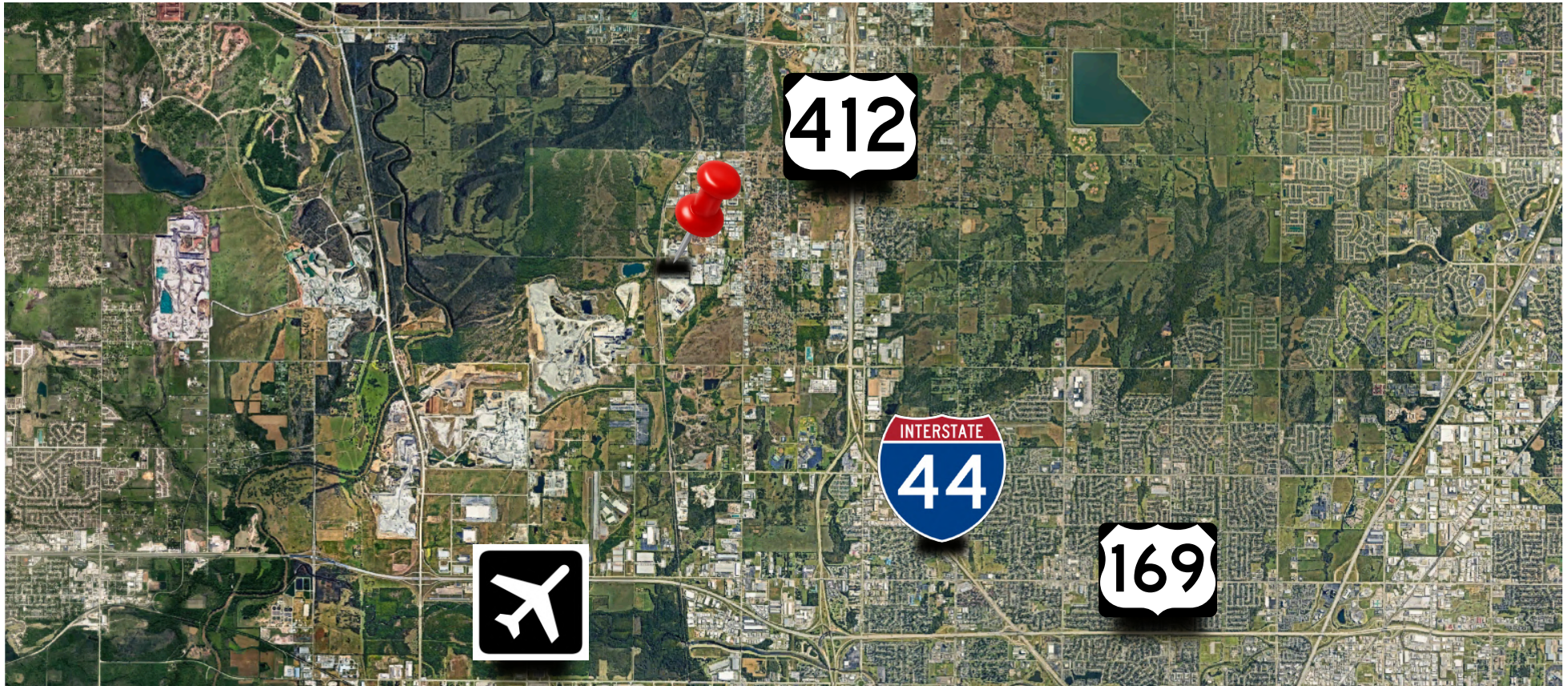
I-44 - 5 Miles

US-169 - 7 Miles

Tulsa International Airport - 12 Miles

Downtown Tulsa - 14 Miles

Port Of Catoosa - 15 Miles





Jeremy Barbuto



Acquisitions Officer



315-436-3872



Jeremy@IronHornEnterprises.com

Available For Lease

**1691 N 161st E Ave,
Tulsa, OK 74116**

