

For Sale | Fee Simple

CBRE

1100
Alakea Street
Suite 2300

\$2,700,000

5,483 SF

Class A Office Space



The Offering

1100 ALAKEA STREET | SUITE 2300

CBRE, Inc. is pleased to offer a rare opportunity to purchase the 23rd floor at 1100 Alakea Street, Downtown Honolulu's Class A, fee simple commercial office condominium. This rare offering provides unobstructed mountain, city, and ocean views. The views of the State Capitol, Iolani Palace, and the historic buildings of the capital district are phenomenal! 1100 Alakea is centrally located on the corner of Hotel and Alakea Streets, across the street for the First Circuit Court, Ali`i Place, and Bishop Square. The State Capitol and Iolani Palace are a brief walk away. Ingress and egress are from the top of Bishop and Alakea Streets, saving you time getting in and out of Downtown Honolulu. This is a fantastic opportunity to purchase a high floor with historically low interest rates!



Wonderful Views

Unbeatable mountain, city, and ocean views.



Class A

Downtown Honolulu's only Class A high rise office condominium complex.



8 Parking Stalls

These are very good parking stalls, all located close to one another and in preferred locations.



5,483 Square Feet

12 window offices, reception/waiting areas, work/storage areas and employee lunchroom.



The Property

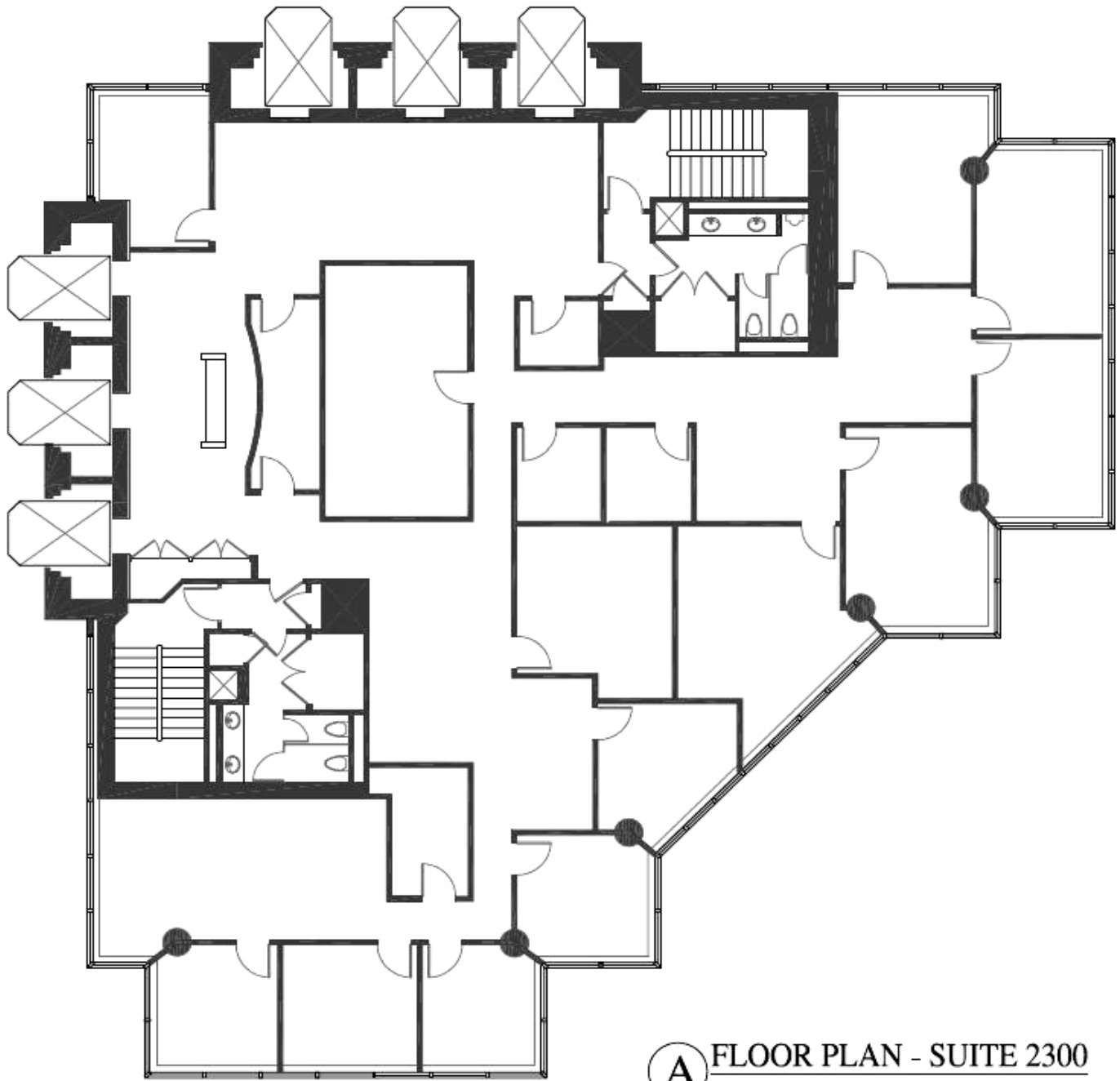
Description

PRICE:	\$2,700,000
SIZE:	5,483 Square Feet
TENURE:	Fee Simple
YEAR BUILT:	1993
ZONING:	BMX-4
CAM:	\$1.41/SF/Month
PARKING STALLS:	8 covered parking stalls - S341, S342, S357, S358, C416, C417, C418 and C629
REAL PROPERTY TAX:	\$14,862.02 - Semi-Annually (\$0.45/SF/Month)



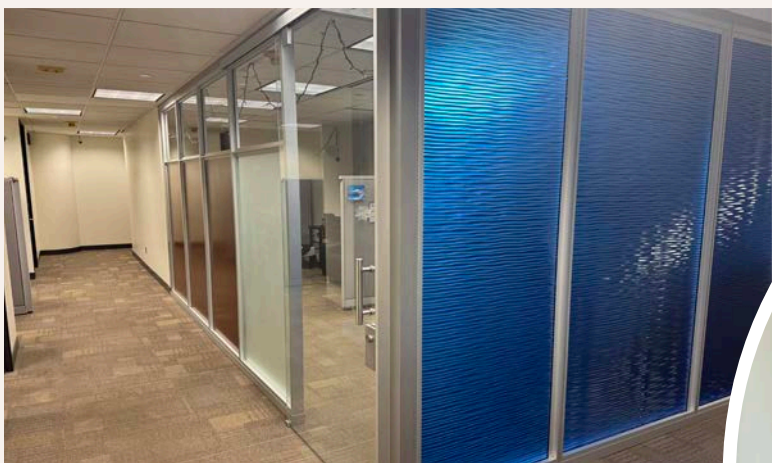
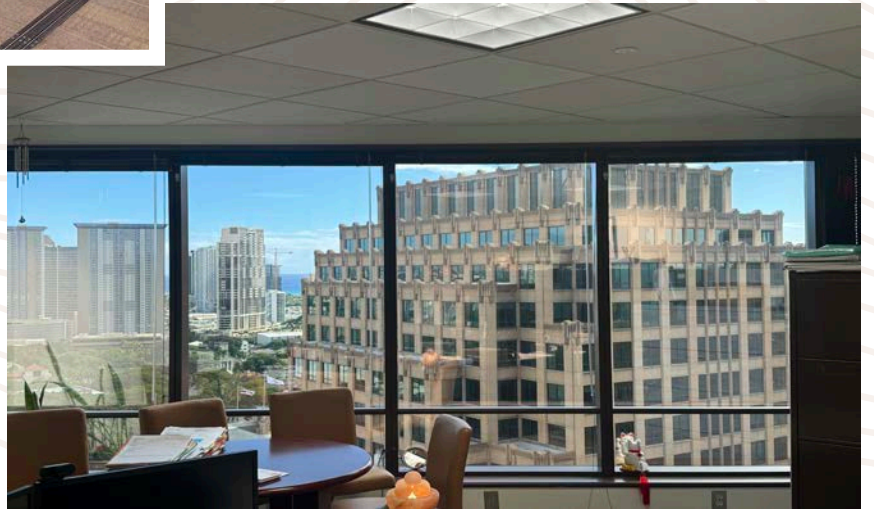
Floor Plan

1100 Alakea Street | 23rd Floor



A FLOOR PLAN - SUITE 2300
NOT TO SCALE

Suite 2300
5,483 SF



1100 Alakea Street Suite 2300

CONTACT

JAMES C. SHIPMAN (B)

Senior Vice President

+1 808 541 5184

james.shipman@cbre.com

Lic. RB-17830

CBRE, INC. | RB-20142



CBRE

© 2024 CBRE, Inc. All rights reserved. This information has been obtained from sources believed reliable but has not been verified for accuracy or completeness. CBRE, Inc. makes no guarantee, representation or warranty and accepts no responsibility or liability as to the accuracy, completeness, or reliability of the information contained herein. You should conduct a careful, independent investigation of the property and verify all information. Any reliance on this information is solely at your own risk. CBRE and the CBRE logo are service marks of CBRE, Inc. All other marks displayed on this document are the property of their respective owners, and the use of such marks does not imply any affiliation with or endorsement of CBRE. Photos herein are the property of their respective owners. Use of these images without the express written consent of the owner is prohibited.