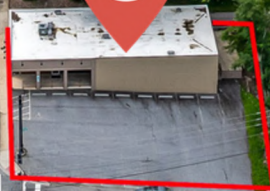


Likewise



MISSION HOSPITAL

BILTMORE AVE.



For Lease



**FREE STANDING OFFICE
CLOSE TO MISSION HOSPITAL**

373 Biltmore Avenue, Asheville, NC 28801

Likewise
COMMERCIAL REAL ESTATE

Stacy Wheeler LISTING BROKER

423.504.8167 | stacy@likewisecommercial.com | likewisecommercial.com



OFFERING SUMMARY

LEASE PRICE **\$24.50/SF NNN**

BUILDING SIZE **± 3,182 SF**

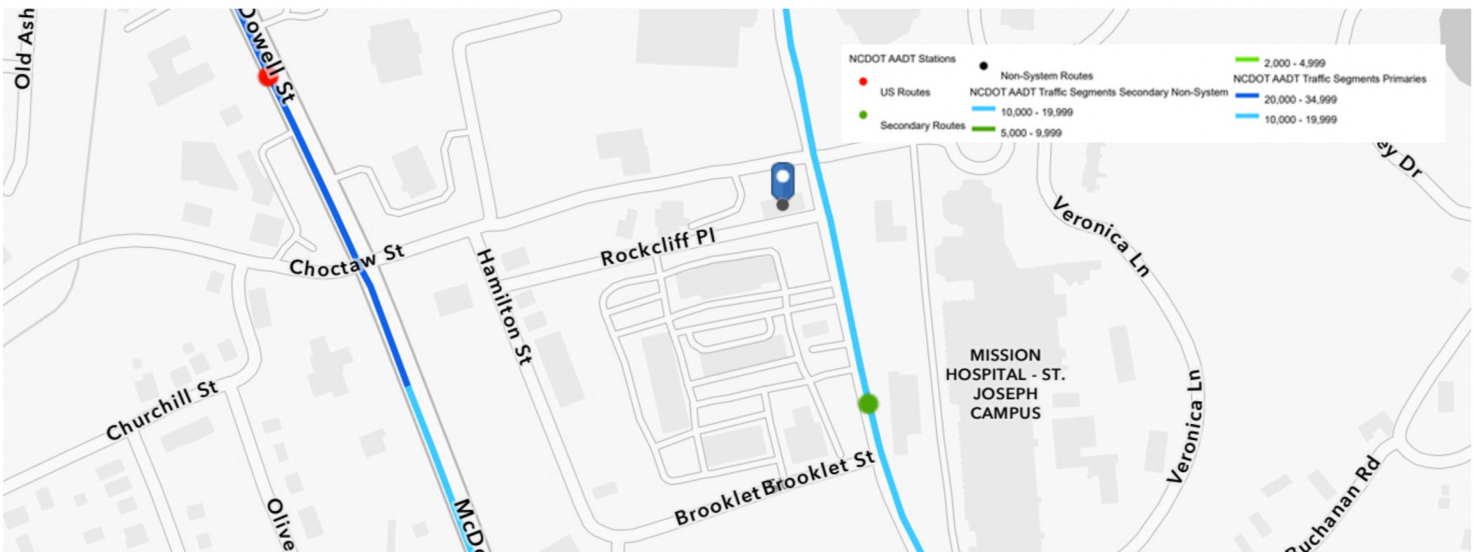
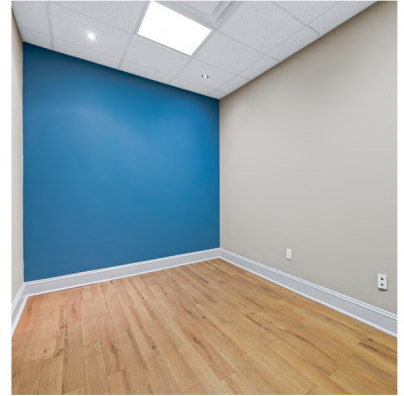
ZONING **INST**



PROPERTY FEATURES

- High visibility at signalized intersection on busy Biltmore Avenue
- Half a mile from Mission Hospital and one mile from downtown Asheville
- Spacious designated parking lot
- Versatile space, ideal for medical office, professional services, retail, or showroom
- Six offices, 3-phase power service, two restrooms, a kitchenette, two large common rooms, and an alarm system
- Strategic location with functional amenities
- MLS# 4316914

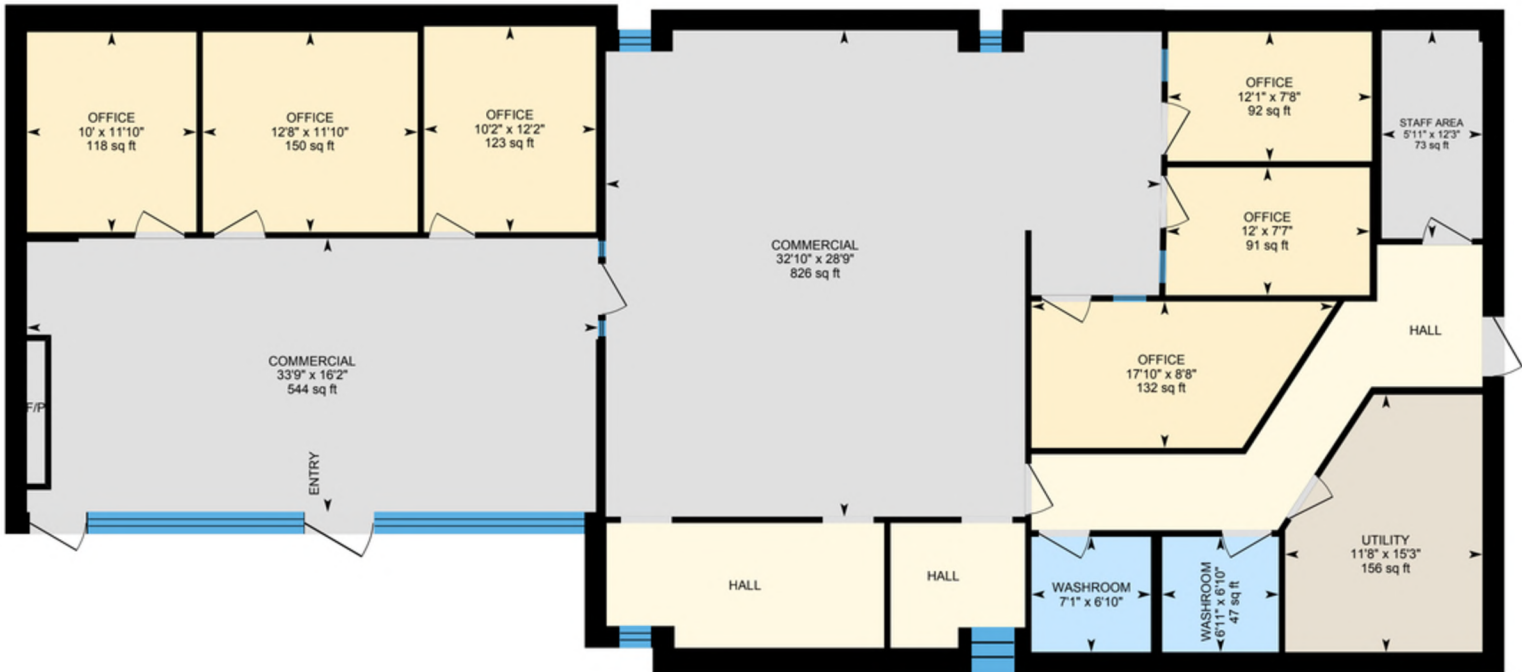








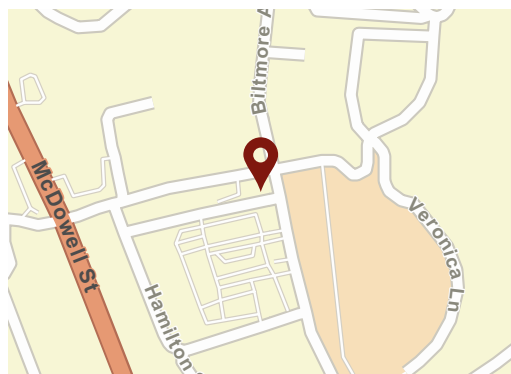
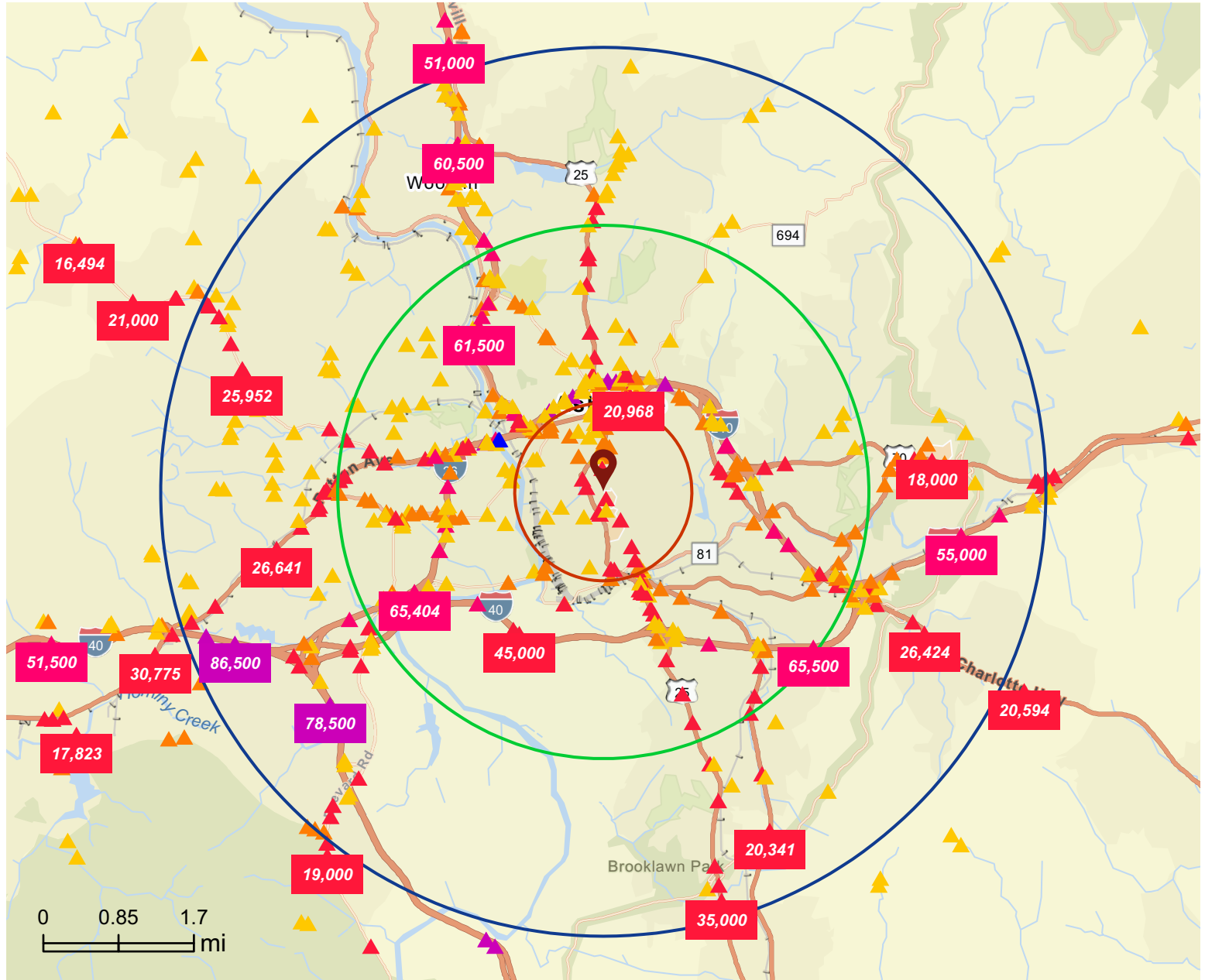
± 3,182 SF TOTAL



Traffic Count Map

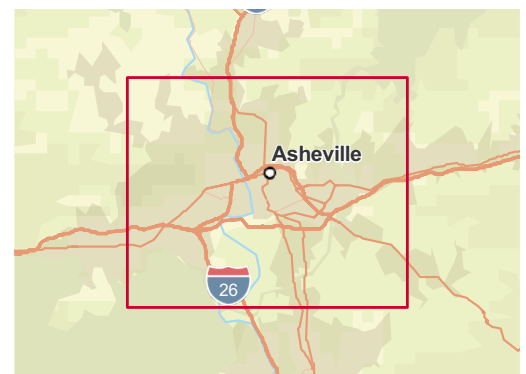
373 Biltmore Ave, Asheville, North Carolina, 28801

Rings: 1, 3, 5 mile radii



Average Daily Traffic Volume

- ▲ Up to 8,000 vehicles per day
- ▲ 8,001 - 15,000
- ▲ 15,001 - 50,000
- ▲ 50,001 - 70,000
- ▲ 70,001 - 100,000
- ▲ More than 100,000 per day

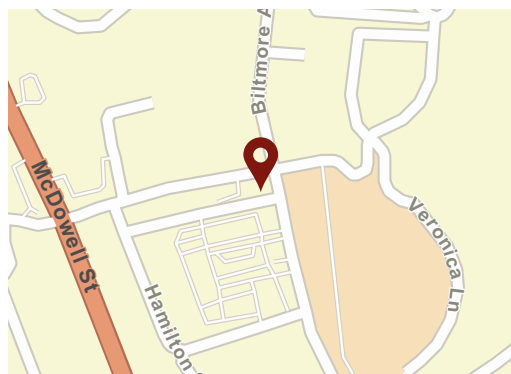


Source: Traffic Counts (2025)

Traffic Count Map - Close Up

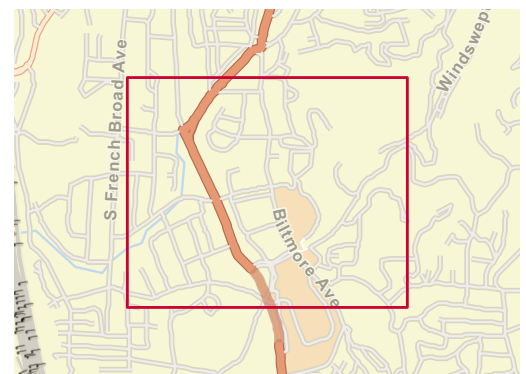
373 Biltmore Ave, Asheville, North Carolina, 28801

Rings: 1, 3, 5 mile radii



Average Daily Traffic Volume

- ▲ Up to 8,000 vehicles per day
- ▲ 8,001 - 15,000
- ▲ 15,001 - 50,000
- ▲ 50,001 - 70,000
- ▲ 70,001 - 100,000
- ▲ More than 100,000 per day



373 Biltmore Ave, Asheville, North Carolina, 28801
Ring: 5 mile radius

City Greens (K6)


Dominant Tapestry Segment

KEY FACTS


107,126
Total Population


\$454,737
Median Home Value


7,560
Businesses


147,206
Daytime Population


41.0

Median Age



0.6%

2025-2030
Pop Growth Rate


\$46,826

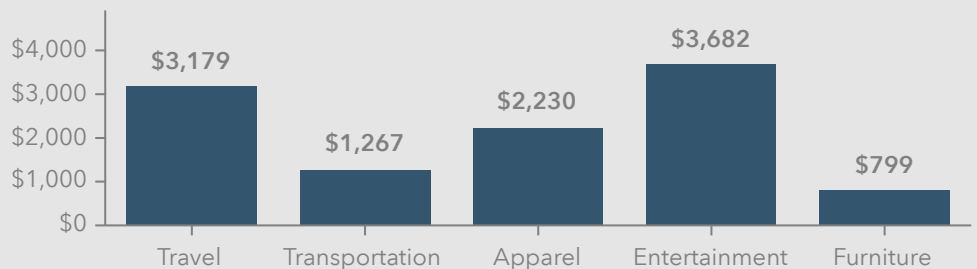
Per Capita Income


\$69,444

Median Household Income


2.1
Avg Household Size

KEY SPENDING FACTS



Source: This infographic contains data provided by Esri (2025, 2030), Esri-Data Axle (2025), Esri-U.S. BLS (2025).

© 2025 Esri

Spending facts are average annual dollars per household

Business Summary Report (NAICS)

373 Biltmore Ave, Asheville, North Carolina, 28801



Rings: 1, 3, 5 mile radii

Data for all businesses in area	1 mile	3 miles	5 miles
Total Businesses	1,640	5,417	7,560
Total Employees	24,182	63,118	87,713
Total Population	8,591	56,927	107,126
Employee/Population Ratio (per 100)	281.5	110.9	81.9

by NAICS Codes	Businesses		Employees		Businesses		Employees		Businesses		Employees	
	Number	%	Number	%	Number	%	Number	%	Number	%	Number	%
Agriculture, Forestry, Fishing & Hunting (11)	8	0.5%	34	0.1%	22	0.4%	71	0.1%	31	0.4%	92	0.1%
Mining (21)	0	0.0%	0	0.0%	1	0.0%	20	0.0%	4	0.1%	37	0.0%
Utilities (22)	1	0.1%	36	0.1%	2	0.0%	53	0.1%	5	0.1%	216	0.3%
Construction (23)	44	2.7%	248	1.0%	204	3.8%	1,271	2.0%	358	4.7%	3,626	4.1%
Building Construction	21	1.3%	117	0.5%	88	1.6%	517	0.8%	153	2.0%	1,549	1.8%
Heavy/Civil Eng Construction	3	0.2%	11	0.1%	14	0.3%	88	0.1%	31	0.4%	347	0.4%
Specialty Trade Contractor	21	1.3%	120	0.5%	101	1.9%	666	1.1%	175	2.3%	1,729	2.0%
Manufacturing (31-33)	39	2.4%	436	1.8%	150	2.8%	1,858	2.9%	223	3.0%	3,313	3.8%
Wholesale Trade (42)	20	1.2%	200	0.8%	101	1.9%	877	1.4%	157	2.1%	1,720	2.0%
Durable Goods	13	0.8%	167	0.7%	69	1.3%	628	1.0%	104	1.4%	947	1.1%
Nondurable Goods	6	0.4%	30	0.1%	30	0.6%	244	0.4%	47	0.6%	759	0.9%
Trade Broker	1	0.1%	3	0.0%	2	0.0%	5	0.0%	5	0.1%	14	0.0%



Source: This infographic contains data provided by Esri-Data Axle (2025), Esri (2025). Data note: Not all NAICS subcategories for a 2 digit major category are being shown.

Business Summary Report (NAICS)

373 Biltmore Ave, Asheville, North Carolina, 28801



Rings: 1, 3, 5 mile radii

by NAICS Codes	1 mile				3 miles				5 miles			
	Businesses		Employees		Businesses		Employees		Businesses		Employees	
	Number	%	Number	%	Number	%	Number	%	Number	%	Number	%
Retail Trade (44-45)	156	9.5%	1,159	4.8%	632	11.7%	7,034	11.1%	959	12.7%	10,836	12.3%
Motor Vehicle & Parts Dealers	2	0.1%	12	0.1%	35	0.7%	359	0.6%	75	1.0%	908	1.0%
Furniture & Home Furnishing Stores	8	0.5%	63	0.3%	37	0.7%	315	0.5%	61	0.8%	510	0.6%
Electronics & Appliance Stores	4	0.2%	32	0.1%	17	0.3%	121	0.2%	23	0.3%	141	0.2%
Building & Garden Equipment	3	0.2%	180	0.7%	31	0.6%	705	1.1%	52	0.7%	1,021	1.2%
Food & Beverage Stores	24	1.5%	177	0.7%	95	1.8%	1,301	2.1%	144	1.9%	2,338	2.7%
Health & Personal Care Stores	9	0.6%	42	0.2%	65	1.2%	443	0.7%	91	1.2%	829	0.9%
Gasoline Stations	1	0.1%	3	0.0%	19	0.3%	84	0.1%	34	0.5%	147	0.2%
Clothing, Shoe and Jewellery Stores	42	2.6%	286	1.2%	120	2.2%	1,154	1.8%	152	2.0%	1,325	1.5%
Sporting Goods, Hobby & Music Stores	60	3.7%	317	1.3%	164	3.0%	984	1.6%	229	3.0%	1,298	1.5%
General Merchandise Stores	3	0.2%	48	0.2%	48	0.9%	1,569	2.5%	99	1.3%	2,318	2.6%
Transportation & Warehousing (48-49)	8	0.5%	116	0.5%	56	1.0%	682	1.1%	96	1.3%	1,013	1.1%
Truck Transportation	2	0.1%	20	0.1%	16	0.3%	153	0.2%	28	0.4%	309	0.3%
Information (51)	42	2.6%	687	2.8%	113	2.1%	1,265	2.0%	158	2.1%	1,800	2.0%
Finance & Insurance (52)	80	4.9%	624	2.6%	237	4.4%	1,493	2.4%	334	4.4%	2,053	2.3%
Central Bank/Credit & Related Activities	28	1.7%	321	1.3%	78	1.4%	722	1.1%	114	1.5%	992	1.1%
Securities & Commodity Contracts	40	2.4%	225	0.9%	100	1.9%	473	0.8%	126	1.7%	561	0.6%
Funds, Trusts & Other Financial	13	0.8%	78	0.3%	58	1.1%	299	0.5%	94	1.2%	500	0.6%
Real Estate, Rental & Leasing (53)	97	5.9%	989	4.1%	339	6.3%	2,884	4.6%	470	6.2%	3,585	4.1%
Professional, Scientific & Tech Services (54)	226	13.8%	1,577	6.5%	628	11.6%	3,734	5.9%	799	10.6%	4,814	5.5%
Legal Services	79	4.8%	438	1.8%	200	3.7%	1,045	1.7%	222	2.9%	1,111	1.3%



Source: This infographic contains data provided by Esri-Data Axle (2025), Esri (2025). Data note: Not all NAICS subcategories for a 2 digit major category are being shown.

Business Summary Report (NAICS)

373 Biltmore Ave, Asheville, North Carolina, 28801



Rings: 1, 3, 5 mile radii

by NAICS Codes	1 mile				3 miles				5 miles			
	Businesses		Employees		Businesses		Employees		Businesses		Employees	
	Number	%	Number	%	Number	%	Number	%	Number	%	Number	%
Management of Companies (55)	6	0.4%	52	0.2%	20	0.4%	112	0.2%	29	0.4%	139	0.2%
Administrative, Support & Waste Mgmt (56)	41	2.5%	342	1.4%	163	3.0%	1,229	1.9%	249	3.3%	1,837	2.1%
Educational Services (61)	26	1.6%	516	2.1%	123	2.3%	2,380	3.8%	181	2.4%	3,740	4.3%
Health Care & Social Assistance (62)	255	15.6%	9,792	40.5%	753	13.9%	17,953	28.4%	965	12.8%	22,893	26.1%
Ambulatory Health Care	179	10.9%	2,455	10.2%	510	9.4%	7,841	12.4%	667	8.8%	10,302	11.8%
Hospital	21	1.3%	6,721	27.8%	47	0.9%	7,460	11.8%	60	0.8%	8,913	10.2%
Nursing/Residential Care	4	0.2%	39	0.2%	28	0.5%	613	1.0%	36	0.5%	976	1.1%
Social Assistance	51	3.1%	577	2.4%	167	3.1%	2,040	3.2%	202	2.7%	2,701	3.1%
Arts, Entertainment & Recreation (71)	40	2.4%	403	1.7%	153	2.8%	2,230	3.5%	205	2.7%	3,409	3.9%
Accommodation & Food Services (72)	182	11.1%	2,795	11.6%	538	9.9%	9,259	14.7%	699	9.3%	12,038	13.7%
Accommodation	28	1.7%	709	2.9%	101	1.9%	2,458	3.9%	132	1.8%	3,150	3.6%
Food & Drinking Places	154	9.4%	2,085	8.6%	437	8.1%	6,801	10.8%	567	7.5%	8,889	10.1%
Other Services Except Public Admin (81)	188	11.5%	1,010	4.2%	701	12.9%	3,420	5.4%	988	13.1%	4,719	5.4%
Repair & Maintenance	15	0.9%	62	0.3%	84	1.6%	388	0.6%	149	2.0%	675	0.8%
Auto Repair & Maintenance	8	0.5%	47	0.2%	59	1.1%	300	0.5%	105	1.4%	496	0.6%
Personal & Laundry Service	61	3.7%	300	1.2%	256	4.7%	1,115	1.8%	348	4.6%	1,497	1.7%
Civic and Other Orgs	112	6.8%	649	2.7%	361	6.7%	1,917	3.0%	490	6.5%	2,547	2.9%
Public Administration (92)	82	5.0%	3,158	13.1%	154	2.8%	5,256	8.3%	189	2.5%	5,774	6.6%
Unclassified Establishments (99)	98	6.0%	9	0.0%	329	6.1%	36	0.1%	462	6.1%	59	0.1%
Total (11-99)	1,640	100.0%	24,182	100.0%	5,417	100.0%	63,118	100.0%	7,560	100.0%	87,713	100.0%



Source: This infographic contains data provided by Esri-Data Axle (2025), Esri (2025). Data note: Not all NAICS subcategories for a 2 digit major category are being shown.

Business Summary Report (SIC)

373 Biltmore Ave, Asheville, North Carolina, 28801



Rings: 1, 3, 5 mile radii

Data for all businesses in area	1 mile	3 miles	5 miles
Total Businesses	1,640	5,417	7,560
Total Employees	24,182	63,118	87,713
Total Population	8,591	56,927	107,126
Employee/Population Ratio (per 100)	281.5	110.9	81.9

by SIC Codes	Businesses		Employees		Businesses		Employees		Businesses		Employees	
	Number	%	Number	%	Number	%	Number	%	Number	%	Number	%
Agriculture & Mining (01-14)	16	1.0%	74	0.3%	77	1.4%	385	0.6%	159	2.1%	897	1.0%
Construction (15-17)	41	2.5%	229	0.9%	190	3.5%	1,122	1.8%	334	4.4%	3,386	3.9%
Manufacturing (20-39)	41	2.5%	732	3.0%	146	2.7%	2,153	3.4%	217	2.9%	3,621	4.1%
Transportation (40-47)	12	0.7%	119	0.5%	82	1.5%	762	1.2%	140	1.9%	1,264	1.4%
Communication (48)	10	0.6%	108	0.5%	38	0.7%	308	0.5%	59	0.8%	696	0.8%
Utility (49)	2	0.1%	38	0.2%	9	0.2%	115	0.2%	16	0.2%	513	0.6%
Wholesale Trade (50-51)	21	1.3%	203	0.8%	103	1.9%	884	1.4%	159	2.1%	1,727	2.0%
Retail Trade Summary (52-59)	314	19.1%	3,271	13.5%	1,089	20.1%	13,977	22.1%	1,561	20.6%	19,924	22.7%
Home Improvement	3	0.2%	180	0.7%	31	0.6%	705	1.1%	53	0.7%	1,026	1.2%
General Merchandise Stores	2	0.1%	45	0.2%	29	0.5%	1,512	2.4%	43	0.6%	1,806	2.1%
Food Stores	24	1.5%	214	0.9%	107	2.0%	1,463	2.3%	159	2.1%	2,530	2.9%
Auto Dealers & Gas Stations	3	0.2%	15	0.1%	52	1.0%	433	0.7%	106	1.4%	1,033	1.2%
Apparel & Accessory Stores	35	2.1%	261	1.1%	97	1.8%	994	1.6%	123	1.6%	1,143	1.3%
Furniture & Home Furnishings	14	0.8%	110	0.5%	63	1.2%	499	0.8%	101	1.3%	743	0.8%
Eating & Drinking Places	149	9.1%	2,040	8.4%	421	7.8%	6,615	10.5%	547	7.2%	8,658	9.9%
Miscellaneous Retail	83	5.1%	407	1.7%	287	5.3%	1,755	2.8%	429	5.7%	2,985	3.4%



Source: This infographic contains data provided by Esri-Data Axle (2025), Esri (2025).

Business Summary Report (SIC)

373 Biltmore Ave, Asheville, North Carolina, 28801



Rings: 1, 3, 5 mile radii

by SIC Codes	1 mile				3 miles				5 miles			
	Businesses		Employees		Businesses		Employees		Businesses		Employees	
	Number	%	Number	%	Number	%	Number	%	Number	%	Number	%
Finance, Insurance, Real Estate (60-67)	186	11.3%	1,808	7.5%	569	10.5%	4,466	7.1%	788	10.4%	5,744	6.5%
Banks, Savings & Lending	29	1.8%	326	1.4%	83	1.5%	707	1.1%	120	1.6%	995	1.1%
Securities Brokers	37	2.3%	215	0.9%	97	1.8%	462	0.7%	122	1.6%	543	0.6%
Insurance Carriers & Agents	13	0.8%	78	0.3%	58	1.1%	299	0.5%	94	1.2%	497	0.6%
Real Estate, Investment Offices	106	6.5%	1,188	4.9%	330	6.1%	2,998	4.8%	453	6.0%	3,709	4.2%
Services Summary (70-89)	816	49.8%	14,471	59.8%	2,632	48.6%	33,722	53.4%	3,476	46.0%	44,172	50.4%
Hotels & Lodging	28	1.7%	709	2.9%	101	1.9%	2,458	3.9%	132	1.8%	3,150	3.6%
Automotive Services	10	0.6%	64	0.3%	78	1.4%	373	0.6%	134	1.8%	598	0.7%
Movies & Amusements	38	2.3%	257	1.1%	160	3.0%	907	1.4%	224	3.0%	1,318	1.5%
Health Services	201	12.3%	9,206	38.1%	561	10.4%	15,748	24.9%	733	9.7%	19,646	22.4%
Legal Services	74	4.5%	421	1.7%	193	3.6%	1,019	1.6%	215	2.8%	1,085	1.2%
Education Inst. & Libraries	25	1.5%	577	2.4%	98	1.8%	2,407	3.8%	142	1.9%	3,721	4.2%
Other Services	439	26.8%	3,237	13.4%	1,442	26.6%	10,811	17.1%	1,896	25.1%	14,653	16.7%
Government (91-97)	81	4.9%	3,114	12.9%	151	2.8%	5,174	8.2%	187	2.5%	5,695	6.5%
Unclassified Establishments (99)	100	6.1%	15	0.1%	332	6.1%	50	0.1%	465	6.2%	73	0.1%
Totals (01-99)	1,640	100.0%	24,182	100.0%	5,417	100.0%	63,118	100.0%	7,560	100.0%	87,713	100.0%



Source: This infographic contains data provided by Esri-Data Axle (2025), Esri (2025).

Key Facts

373 Biltmore Ave, Asheville, North Carolina, 28801
Ring: 5 mile radius

KEY FACTS

107,126

Population



2.1

Average Household Size



Median Age

\$69,444

Median Household Income

EDUCATION



No High School Diploma



18.9%

High School Graduate



20.7%

Some College/
Associate's Degree



54.5%

Bachelor's/Grad/
Prof Degree

BUSINESS



7,560

Total Businesses



87,713

Total Employees

EMPLOYMENT



66.4%

White Collar



14.4%

Blue Collar



19.3%

Services



Unemployment Rate

INCOME



\$69,444

Median Household Income



\$46,826

Per Capita Income



\$121,315

Median Net Worth

2025 Households by income (Esri)

The largest group: \$50,000 - \$74,999 (16.8%)

The smallest group: \$25,000 - \$34,999 (7.2%)

Indicator ▲	Value	Diff		
<\$15,000	10.7%	+2.3%		
\$15,000 - \$24,999	7.8%	+0.8%		
\$25,000 - \$34,999	7.2%	+0.6%		
\$35,000 - \$49,999	10.8%	+0.3%		
\$50,000 - \$74,999	16.8%	-0.1%		
\$75,000 - \$99,999	11.4%	-1.8%		
\$100,000 - \$149,999	14.1%	-1.7%		
\$150,000 - \$199,999	10.2%	-0.2%		
\$200,000+	10.9%	-0.3%		

Bars show deviation from Buncombe County