



For Sale

Industrial Property

33,015 SF | \$1,500,000

105 Curtis St

Richland, Pennsylvania
17087

Property Highlights

- - 33,015 SF industrial building
- - Zoned for industrial
- - Prime Lebanon County location
- - Flexible for warehouse or distribution
- - Ample space for operations
- - Ideal for Industrial investors or Industrial users

Property Description

Explore a prime opportunity for Industrial/Warehouse/Distribution investors and Users. Boasting a substantial 33,015 SF building constructed in 1980, this well-maintained asset is ideally suited for a range of industrial uses. Zoned for Industrial purposes and strategically located in the Lebanon County, this property offers exceptional accessibility and convenience. Its spacious layout, well-established infrastructure, and prime positioning make it a compelling investment opportunity for those seeking to establish or expand their presence in this dynamic industrial market.

For more information

Kevin Wolfe

O: 610 370 8523 | C: 717 951 4127
kwolfe@naikeystone.com

Patrick Zerbe

O: 610 370 8507 | C:
pzerbe@naikeystone.com

OFFERING SUMMARY

Sale Price	\$1,500,000
Lot Size	198,458 SF
Building Size	33,015 SF

For Sale

Industrial Property

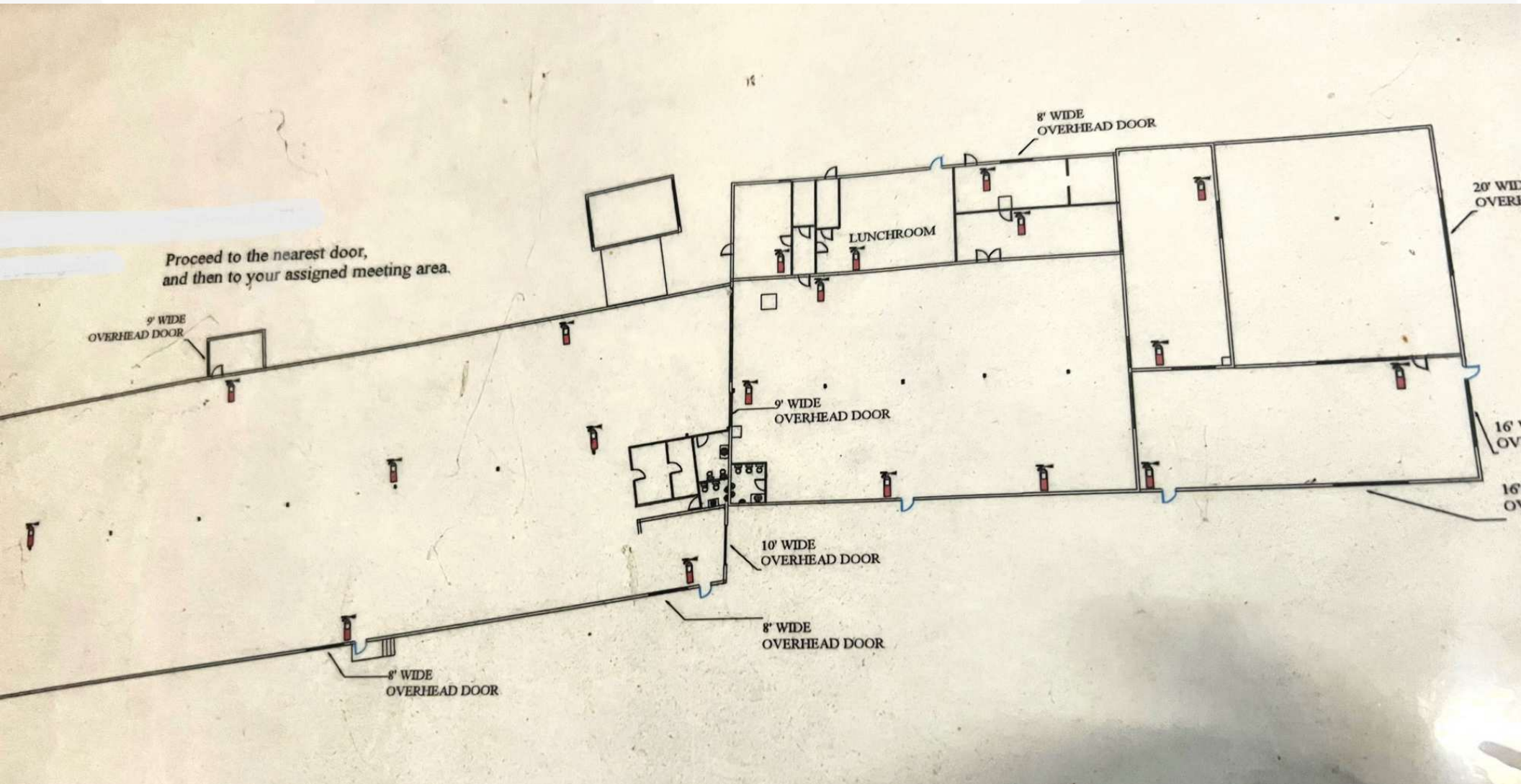
33,015 SF | \$1,500,000



For Sale

Industrial Property

33,015 SF | \$1,500,000



For Sale

Industrial Property

33,015 SF | \$1,500,000

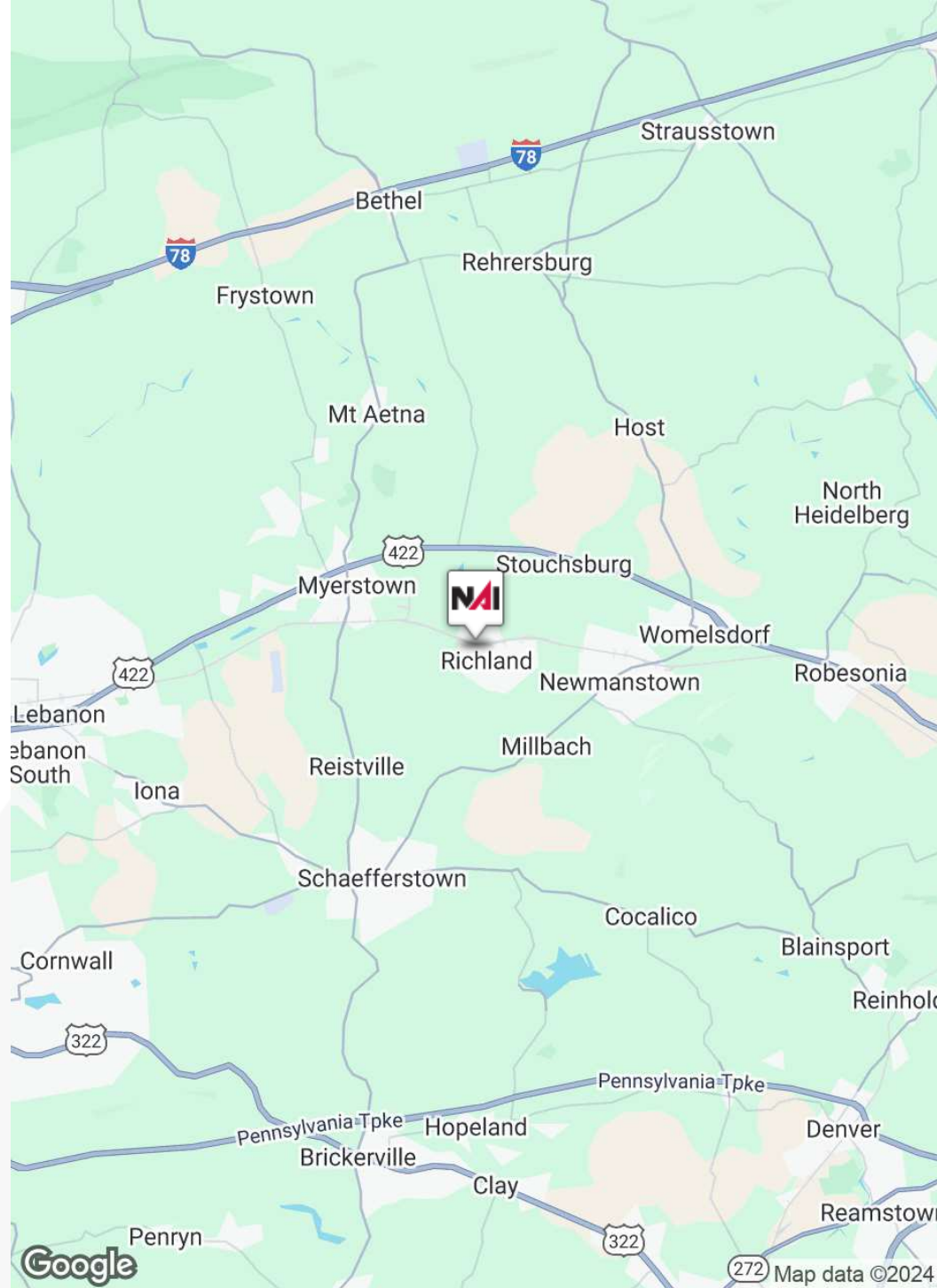
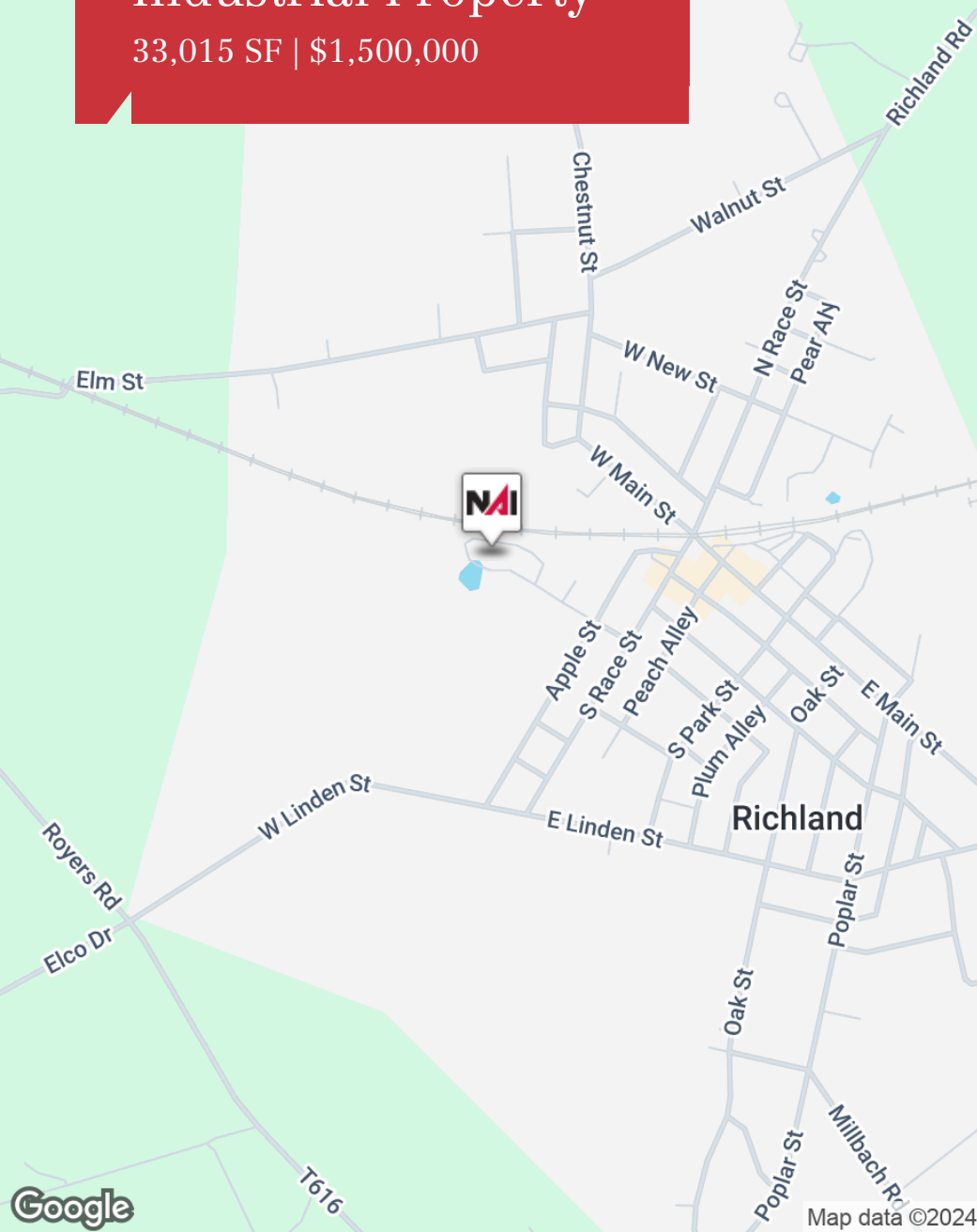
PROPERTY ADDRESS:	105 Curtis St Richland, PA 17087
PROPERTY TYPE:	Industrial
APN:	17-2383033-377050-0000
LOT SIZE:	198,458 SF
BUILDING SIZE:	33,015 SF
GROSS LEASABLE AREA:	SF
ZONING:	Industrial
RAIL ACCESS:	N/A
PARKING SPACES:	20
YEAR BUILT:	1980
CEILINGS:	16 Ft.
POWER:	3 phase 240V
	2
OVERHEAD DOORS	4
COLUMN SPACE:	24 Ft.



For Sale

Industrial Property

33,015 SF | \$1,500,000



For Sale

Industrial Property

33,015 SF | \$1,500,000



Google

Imagery ©2024 TerraMetrics

NAIKeystone
COMMERCIAL REAL ESTATE SERVICES, WORLDWIDE

875 Berkshire Boulevard Suite 102
Wyomissing, PA 19610
610 779 1400 tel
<https://naikeystone.com>