

For Lease
±2,059 SF
Move-In Ready
Medical Office Space



Seacrest Medical Office

2314 S Seacrest Boulevard, Boynton Beach, FL 33435

Property Features

- Coastal and well-maintained medical office building in Boynton Beach, near Woolbright Road & I-95
- Fully built-out medical office space with immediate availability
- Enjoy easy access, prominent signage, and ample parking in a beautifully landscaped environment near the Intracoastal
- Less than half a mile from the Baptist Health Bethesda Hospital East medical hub
- The surrounding area shows residential growth and good demographics, creating a sustainable location for medical practices

Key Highlights



Ground-floor medical office space with leaded x-ray room



Fantastic and efficient build-out with waiting room, doctor's offices, and exam rooms



Great location just 1 mile from I-95 and half a mile from Baptist Bethesda East Hospital



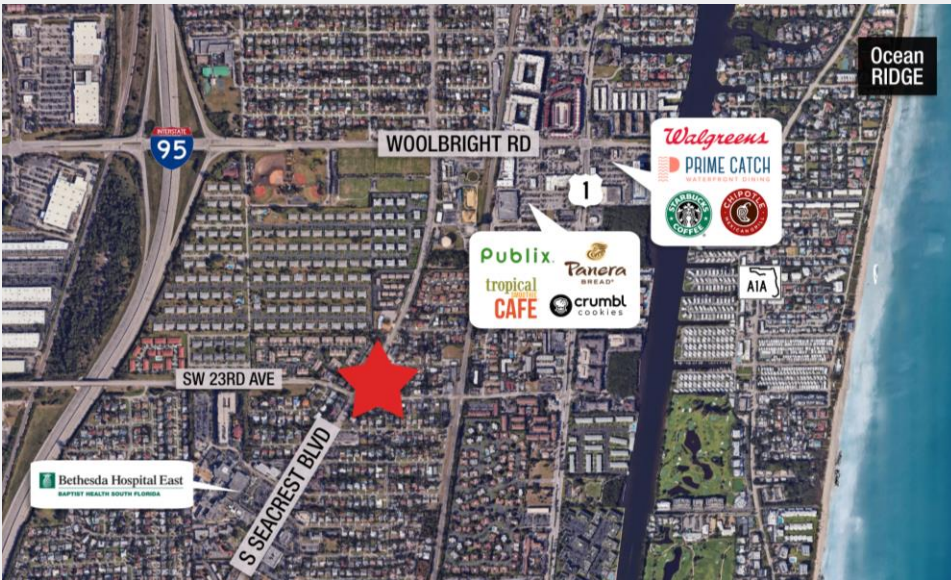
Multiple signage opportunities

For More Information:

Lesley Sheinberg, Managing Director
C: 561 254 7810 | lsheinberg@mhcreal.com

Julia Piatek, Associate
C: 954 939 1444 | jpiatek@mhcreal.com

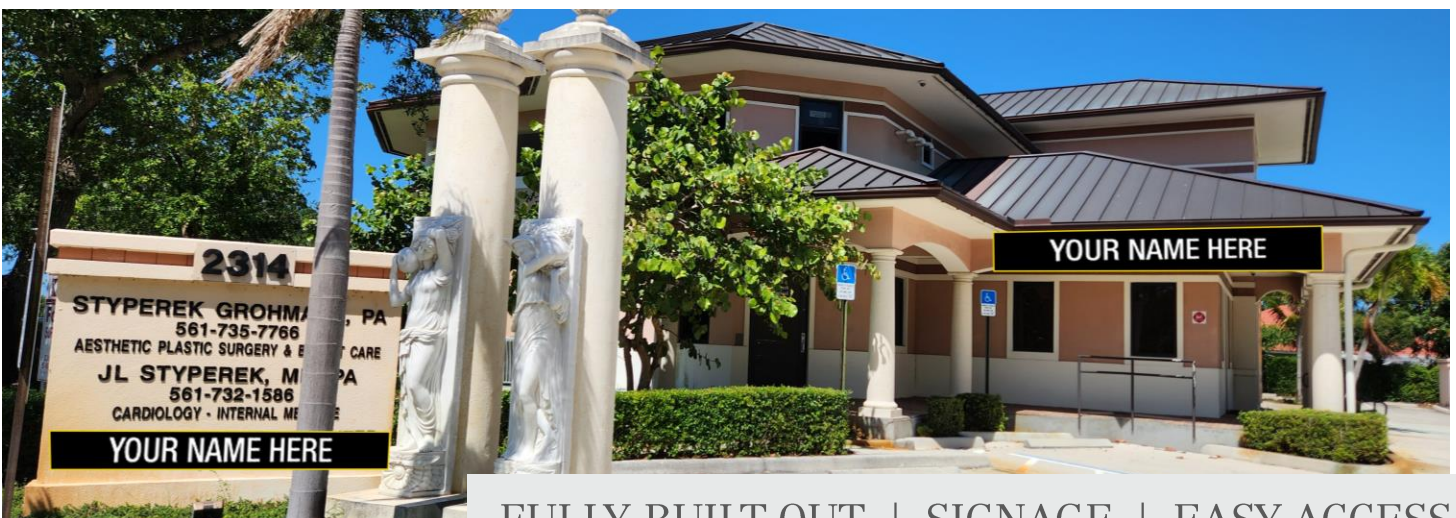
FOR LEASE: 2314 S SEACREST BOULEVARD
±2,059 SF Medical Office Space in Boynton Beach



Convenient Location
 in a thriving community

The building is nestled along scenic Seacrest Boulevard near dense residential with numerous amenities. This area continues to show growth and new development, providing a strategic location for medical professionals.


		1 Mile	3 Miles	5 Miles
Zoning:	C1 – Office Professional			
Rate:	\$25.00/SF			
CAM:	\$7.95/SF			
Demographics:				
	Total Population	14,897	76,900	202,447
	Avg. HH Income	\$112,525	\$106,267	\$102,191
	Households	6,974	34,990	90,181



FULLY BUILT-OUT | SIGNAGE | EASY ACCESS

For More Information:

Lesley Sheinberg | lsheinberg@mhcreal.com
 Julia Piatek | jpiatek@mhcreal.com

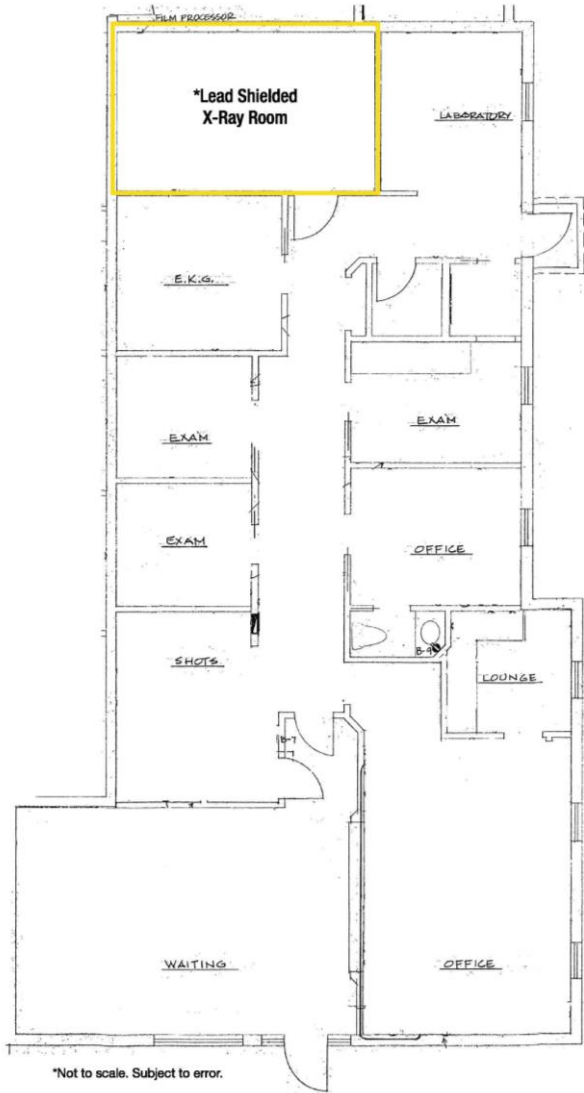
 561 471 8000

 www.mhcreal.com

FOR LEASE: 2314 S SEACREST BOULEVARD ±2,059 SF Medical Office Space Available

Unit 102 ±2,059 SF

Efficient medical office layout including a spacious waiting room, doctor's offices, and exam rooms.



Elevate Your Practice in Boynton Beach - Contact Us to Learn More!

Lesley Sheinberg, Managing Director
C: 561 254 7810 | lsheinberg@mhcreal.com

Julia Piatek, Associate
C: 954 939 1444 | jpiatek@mhcreal.com