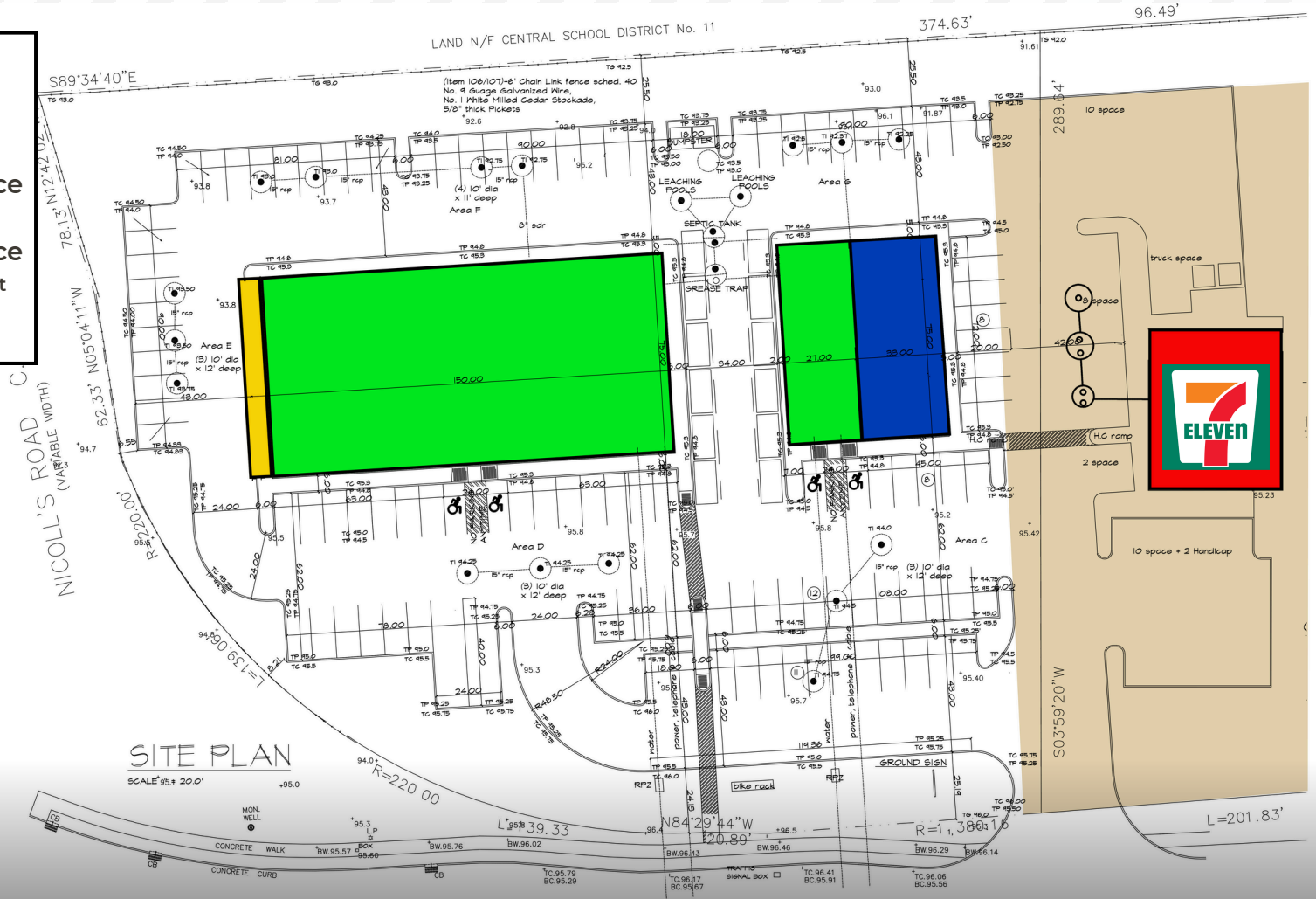


- Existing Building
Tenant: 7 Eleven
- Existing Parking Lot
7 Eleven
- Proposed Building/Space
Tenant: Lease Executed
- Proposed Building/Space
Divisible Space 1,200-11,000 SqFt
- Proposed Drive Thru



1545 MIDDLE COUNTRY RD, CENTERREACH, NY

Development Site. Highest Traffic Volume in Suffolk.

Construction Begins January 2025.

APPROVED PLANS FOR 17,000 SF RETAIL DEVELOPMENT SITE. J-5 ZONING.



Dennis McCoy
Senior Sales Associate
631.965.1530
dennis.mccoy@dgncommercial.com

DGNY
Commercial

BREAKING
GROUND
JANUARY 2025!
BRING YOUR DEALS NOW!



J-5 Zoning

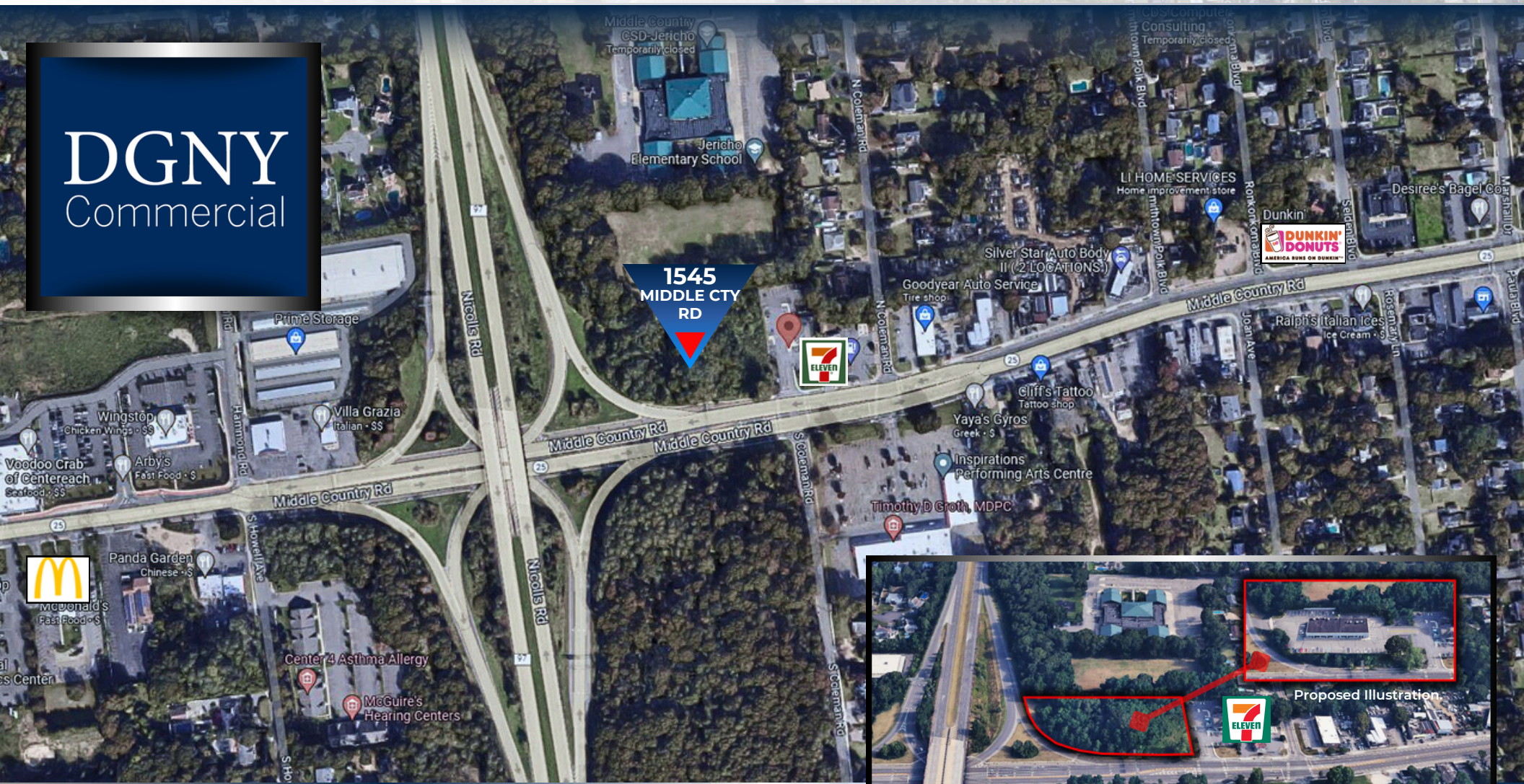
APPROVED PLANS FOR 17,000 SF RETAIL DEVELOPMENT SITE.

- GREAT OPPORTUNITY FOR RETAIL, OFFICE, BANK, DAYCARE FACILITY, TUTORING OR MEDICAL GROUP.
- DIVISIBLE FROM 1,200 TO 11,000 SQFT.

- High visibility and traffic count.
- Located on Nicholls Road & Middle Country Road intersection.
- One of the busiest intersections in Suffolk County.

Call or Email for Lease Terms and Details.

1545 MIDDLE COUNTRY RD, CENTEREACH, NY



For more information on this listing, contact:

Dennis McCoy

Senior Sales Associate

631.965.1530

dennis.mccoy@dgncommercial.com

©2024 DGN Commercial, LLC. The information contained in the communication is strictly confidential. All rights reserved. This information has been obtained from sources believed to be reliable, but has not been verified. No warranty or representation, express or implied, is made as to the accuracy or completeness of the information contained herein and same is submitted subject to errors, omissions, change of price, rental or other conditions, withdrawal without notice and to any special listing conditions imposed by the property owner(s).