



Colliers

Asking Price:

\$1.25 SF/NNN

CONTACT US

**James Yeates**

Vice President  
+1 801 995 0049  
james.yeates@colliers.com

**Justin Irvine**

Vice President  
+1 801 400 4260  
justin.irvine@colliers.com

**Colliers**

2100 Pleasant Grove Blvd., Suite 200  
Pleasant Grove, UT 84062  
Main: +1 801 947 8300  
colliers.com

FOR LEASE

## Lindon Flex/Warehouse

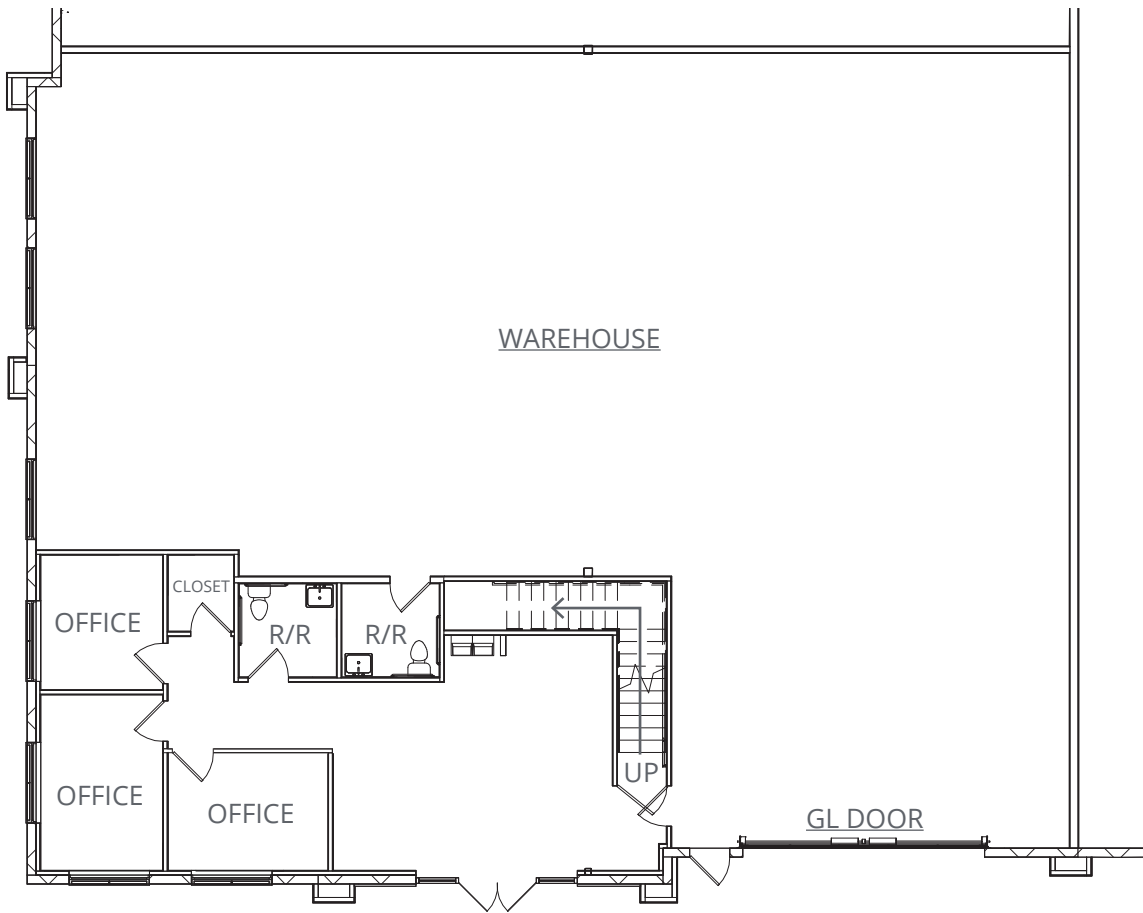
32 S. 1800 W. Unit E | Lindon, UT

### Property Information

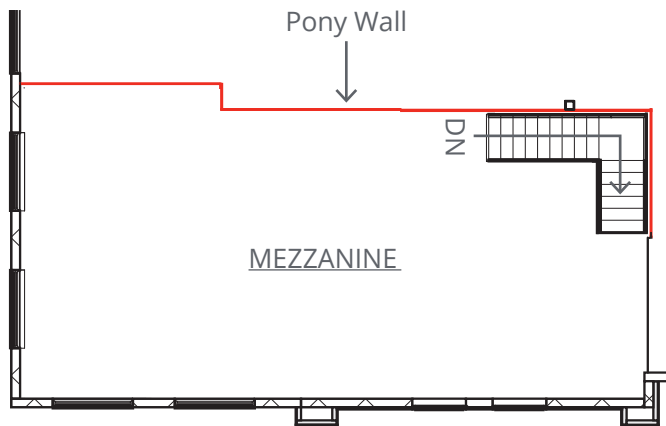
- Unit E: 5,826 SF
  - Office: 1,094 SF
  - Mezzanine: 1,100 SF
  - Warehouse: 3,632 SF
- 1 GL door
- 3 Phase power
- Excellent Location with Good I-15 Access

# Floor Plans

## MAIN LEVEL



## MEZZANINE





Lindon Industrial Flex Warehouse | For Lease







Lindon Industrial Flex Warehouse | For Lease

# Aerial Map



**Colliers**  
2100 Pleasant Grove Blvd., Suite 200  
Pleasant Grove, UT 84062  
Main: +1 801 947 8300  
colliers.com

**James Yeates**  
Vice President  
+1 801 995 0049  
james.yeates@colliers.com

**Justin Irvine**  
Vice President  
+1 801 400 4260  
justin.irvine@colliers.com

This document has been prepared by Colliers International for advertising and general information only. Colliers International makes no guarantees, representations or warranties of any kind, expressed or implied, regarding the information including, but not limited to, warranties of content, accuracy and reliability. Any interested party should undertake their own inquiries as to the accuracy of the information. Colliers International excludes unequivocally all inferred or implied terms, conditions and warranties arising out of this document and excludes all liability for loss and damages arising there from. This publication is the copyrighted property of Colliers International and/or its licensor(s). ©2025. All rights reserved.