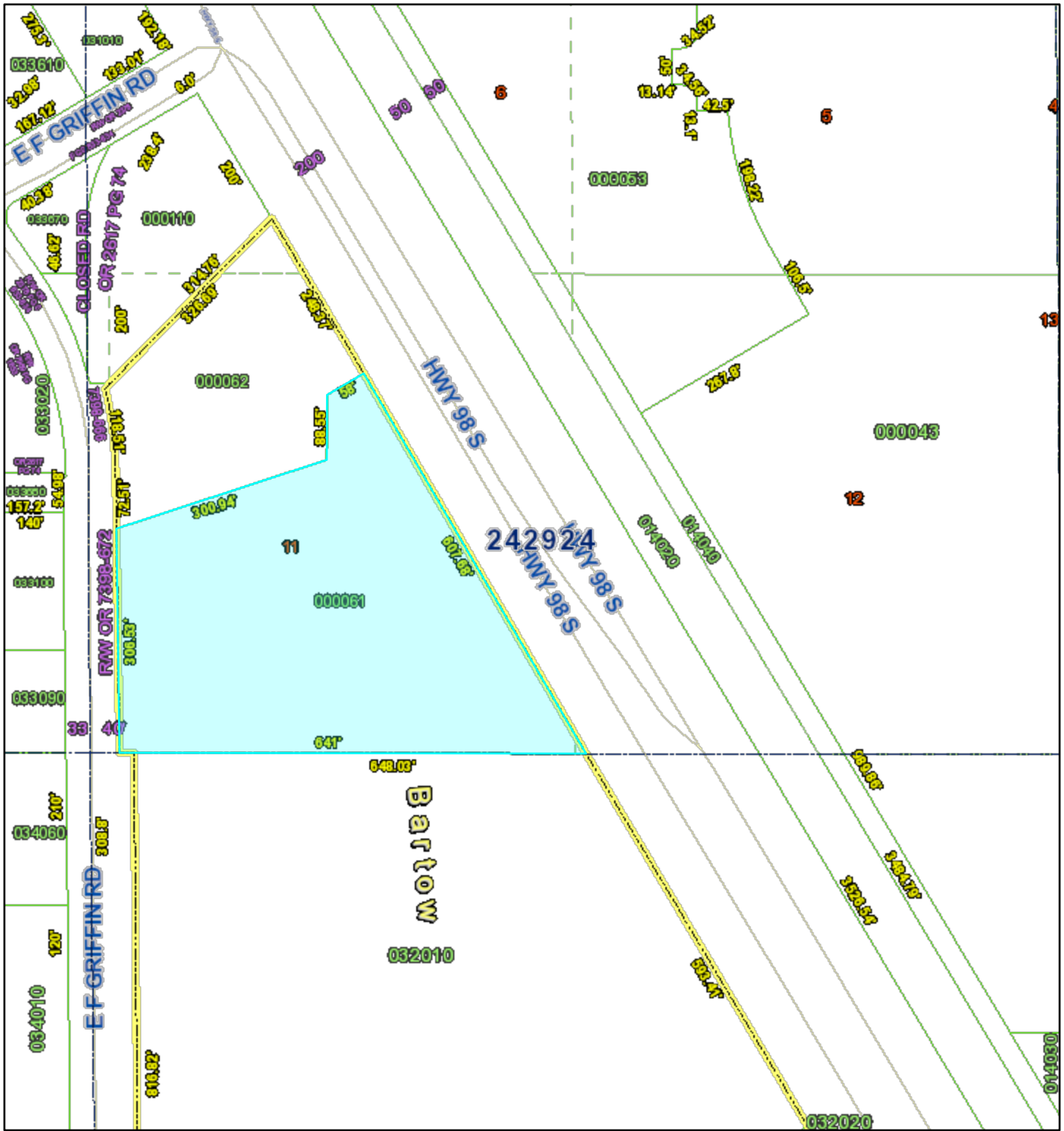


# BAKER ACRES



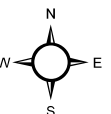
- |                      |                         |
|----------------------|-------------------------|
| PLSS Townships       | Blocks                  |
| PLSS Sections        | Tiers                   |
| PLSS Boundaries      | Dimensions_ParcelFabric |
| Gov't Lots           | Dimensions_Carto_Dist   |
| Roads                | Dimensions_LabelText    |
| Waterbodies          | Misc Text               |
| Municipal Boundaries | Railroads               |
| Lots                 | Parcels                 |
| Lot and Block Text   | Surrounding Counties    |

0 80 160 320 Feet

All maps are worksheets used for illustrative purposes only, they are not surveys. The Polk County Property Appraiser assumes no responsibility for errors in the information and does not guarantee the data is free from error or inaccuracy. The information is provided "as is".



Marsha M. Faux, CFA, ASA  
Property Appraiser  
Polk County, Florida



December 15, 2023