

For Sale

Retail / Industrial Building



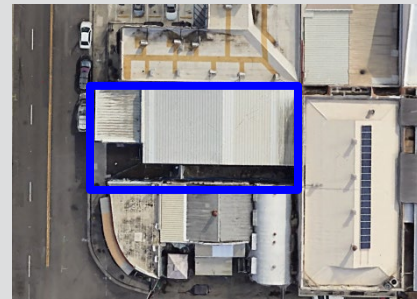
611 Cooke Street

Honolulu, HI 96813

TMK: 1-2-1-050-059

Property Features:

- \$2,999,000.00 (4.2% CAP)
- Fee Simple
- KAK Zoning (Mix-Use)
- Brick & Block Construction
- Corrugated Roof Elastomeric Coated
- Showroom & Warehouse
- Restroom & Shower
- Year Built: 1961
- Month to Month Dog Daycare Tenant
- Flood Zone X (Beyond 500 Year Flood Plain)



LAND AREA: 5,000 SF

BUILDING AREA: 2,900 SF

YARD AREA: 2,000 SF

CEILING HEIGHT: 15 FT. & INSULATED

ENTRY: 3-10X12 SLIDING DOORS & 2-PERSONEL

For more information:

Sheldon Kaiakapu Glassco (PB)

+1 808.372.5964 •

sglassco@obsidianhawaii.com

www.obsidianrealestate.com



OBSIDIAN
REAL ESTATE HAWAII

345 Queen Street, Suite 608
Honolulu, HI 96813

NO WARRANTY OR REPRESENTATION, EXPRESS OR IMPLIED, IS MADE AS TO THE ACCURACY OF THE INFORMATION CONTAINED HEREIN, AND THE SAME IS SUBMITTED SUBJECT TO ERRORS, OMISSIONS, CHANGE OF PRICE, RENTAL OR OTHER CONDITIONS, PRIOR SALE, LEASE OR FINANCING, OR WITHDRAWAL WITHOUT NOTICE, AND OF ANY SPECIAL LISTING CONDITIONS IMPOSED BY OUR PRINCIPALS NO WARRANTIES OR REPRESENTATIONS ARE MADE AS TO THE CONDITION OF THE PROPERTY OR ANY HAZARDS CONTAINED THEREIN ARE ANY TO BE IMPLIED.

For Sale

Retail / Industrial Building



Location Advantages:

- Located in the Central Kaka'ako in the heart of the Kaka'ako Master Plan
- Commercially viable location with flexible zoning which allows almost any commercial and multi-family use, including nightclubs, bars & restaurants
- 5-minute drive to Ala Moana Shopping Center, Honolulu's CBD, Honolulu Harbor, and H-1 freeway access

For more information:

Sheldon Kaiakapu Glassco

+1 808.372.5964 • sglassco@obsidianhawaii.com

www.obsidianhawaii.com

Acceptable Deal Structures:

- Cash
- Conventional Financing
- 1031 Exchange
- 90 Days or Less Transaction



OBSIDIAN
REAL ESTATE HAWAII

345 Queen Street, Suite 608
Honolulu, HI 96813

NO WARRANTY OR REPRESENTATION, EXPRESS OR IMPLIED, IS MADE AS TO THE ACCURACY OF THE INFORMATION CONTAINED HEREIN, AND THE SAME IS SUBMITTED SUBJECT TO ERRORS, OMISSIONS, CHANGE OF PRICE, RENTAL OR OTHER CONDITIONS, PRIOR SALE, LEASE OR FINANCING, OR WITHDRAWAL WITHOUT NOTICE, AND OF ANY SPECIAL LISTING CONDITIONS IMPOSED BY OUR PRINCIPALS NO WARRANTIES OR REPRESENTATIONS ARE MADE AS TO THE CONDITION OF THE PROPERTY OR ANY HAZARDS CONTAINED THEREIN ARE ANY TO BE IMPLIED.

345 Queen Street, Suite 608
Honolulu, HI 96813