

# Your Name on the Building

3858 SF with shared access in 851 Poplar PI S, Seattle, WA 98144

Presented By:  
Reflective Earth



# Discount for Climate Technologies companies or Nonprofits

Shared access with Reflective Earth, a 501c3 nonprofit developing technology to cool the planet

## Property Details

- Security cameras with cell phone alerts
- 8 feet wide access to R&D/manufacturing/storage space, 8 feet ceiling
- 3 phase 480 volt power
- Industrial zone allows any R&D/manufacturing activity
- Parking for 11 cars reserved for sub-tenant
- Secure yard
- Outside storage shed for flammable fuels
- Elevator access to second floor
- 5 bathrooms and a shower
- Climbing gym with cafe one block away; Restaurant three blocks away
- Two blocks from busses 7, 9, 106, 212, and 554 from Bellevue & Mercer Island
- Two blocks from bike lanes on Dearborn and on Hiawatha

**Price: \$18.00 /SF/YR**

- Discount for a climate technology company or synergistic non-profit

■ Reflective Earth, a 501c3, is using 4 offices and half of the 1746sf R&D/manufacturing/storage space to develop technology to cool the planet

■ Looking for a compatible sub-tenant to use 6 offices, conference room, lunch room, and open space on floor 2 and half of the 1746sf R&D/manufacturing/

- Your company name largest on the building
- Exterior will be repainted; you can influence the colors if not yet done
- Secure key card access and mail delivery vault

View the full listing here: <https://www.loopnet.com/Listing/851-Poplar-PI-S-Seattle-WA/33900558/>

Rental Rate:	\$18.00 /SF/YR
Property Type:	Flex
Building Class:	C
Rentable Building Area	3858 SF
:	
Year Built:	1960
Rental Rate Mo:	\$1.50 /SF/MO

# Six offices and half of shared R&D/manufacturing space

851 Poplar Pl S, Seattle, WA 98144

## Listing space

### 2nd Floor

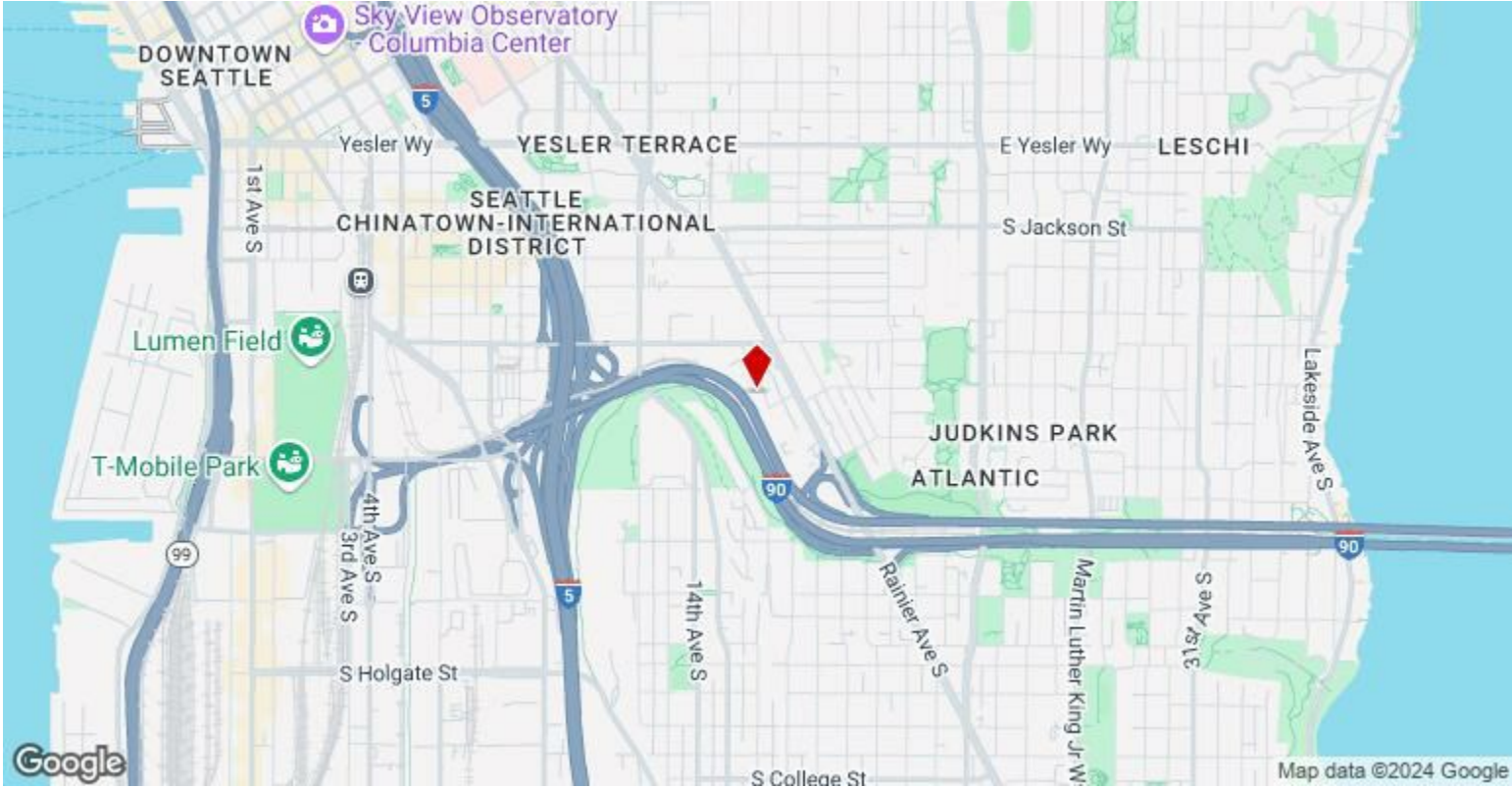
Space Available:	3,858 SF
Rental Rate:	\$18.00 /SF/YR
Date Available:	January 25, 2025
Service Type:	Negotiable
Space Type:	Sublet
Space Use:	Flex
Lease Term:	Negotiable

6 offices, conference room, lunch room, 3 bathrooms, and open space on floor 2 plus half of the 1746sf shared R&D/manufacturing/storage and shower spaces on floor 1, rooms 1, 2, and 3.

# Climate Technologies Building

851 Poplar Pl S, Seattle, WA 98144

## Location





851 Poplar Pl S, Seattle, WA 98144

Property Photos



Primary Photo



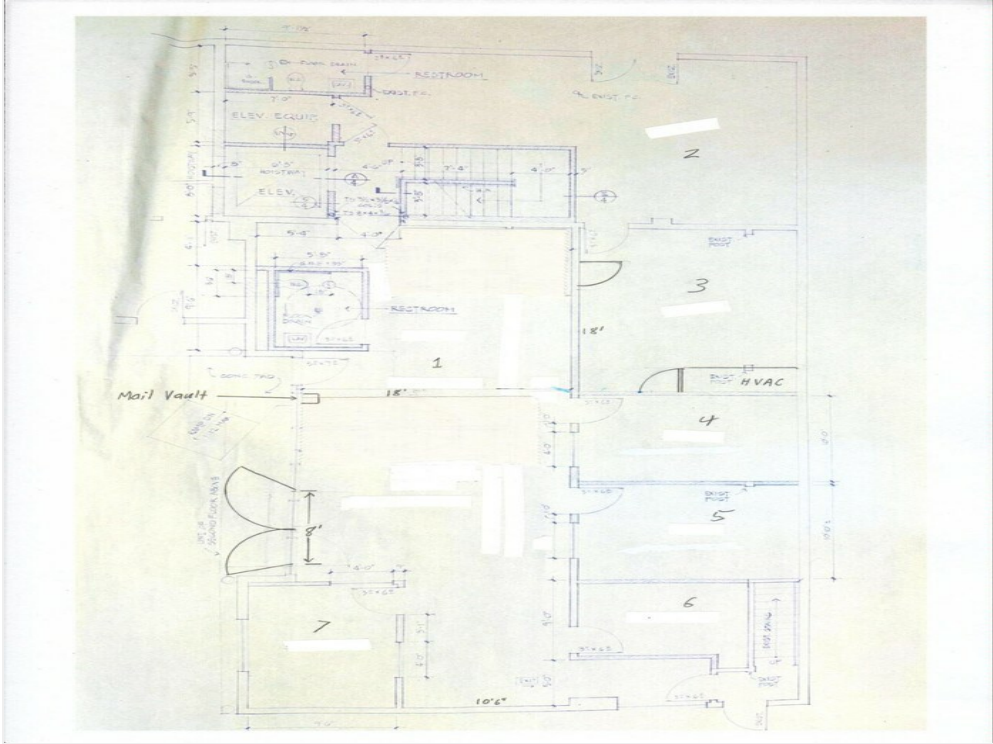
Exterior Photo #2

851 Poplar Pl S, Seattle, WA 98144

### Property Photos



Building Photo



First Floor Plan 2025

851 Poplar Pl S, Seattle, WA 98144



**Jeff Haley**

[jeff.haley@reflectiveearth.org](mailto:jeff.haley@reflectiveearth.org)

(206) 919-1798

**Reflective Earth**

501c3 nonprofit,