

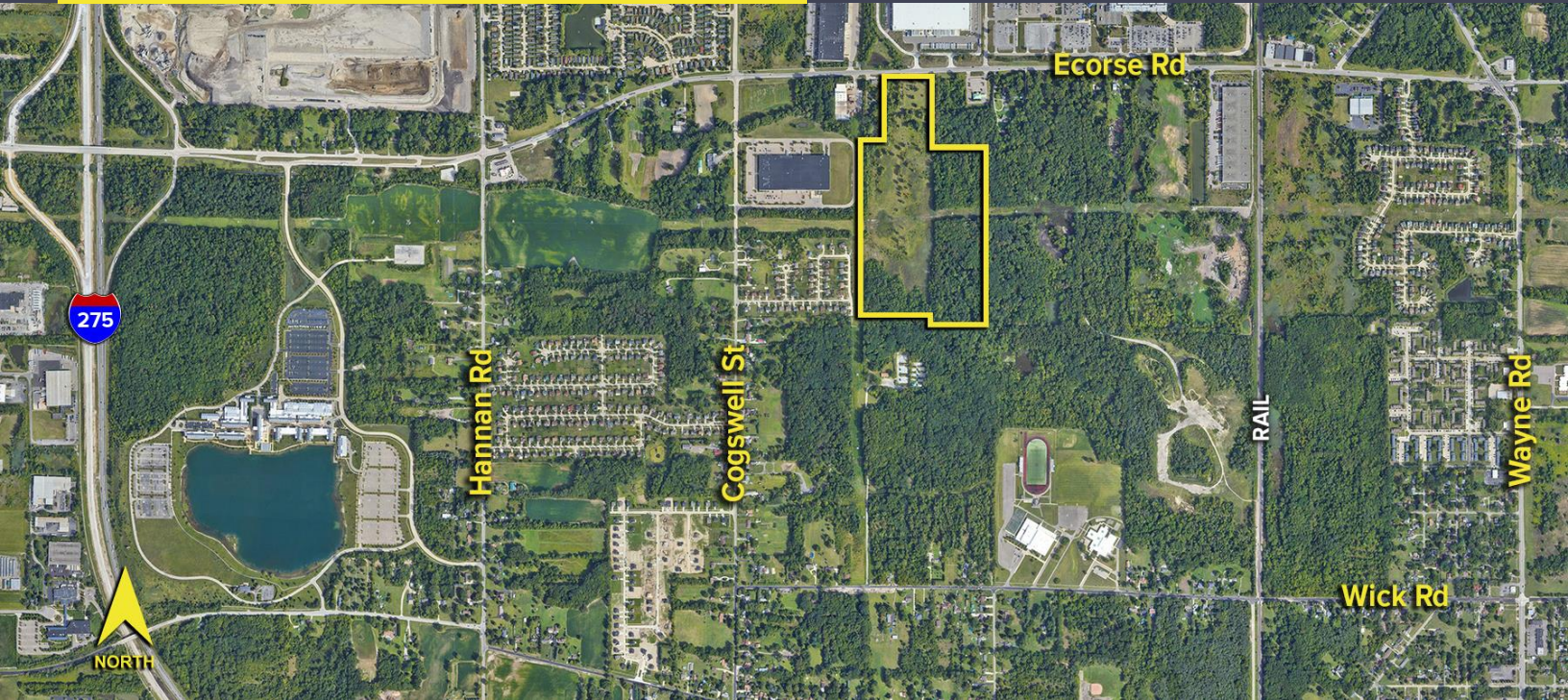
ECORSE ROAD ROMULUS, MICHIGAN

LAND FOR SALE
63.56 Acres Available



**SIGNATURE
ASSOCIATES**
KNOW SIGNATURE | KNOW RESULTS

MIDFIELD TECHNOLOGY PARK



PROPERTY FEATURES

- 63.56 acres available
- Zoned Commercial/M-1/O-R/Conservation & RIA
- Prime development site
- Close-proximity to I-275 and Detroit Metropolitan Airport
- Located within Aerotropolis designation offering abatements and incentives for suitable projects
- City will consider re-zoning to all industrial
- Sale Price: \$1,903,800 (\$29,952.80/acre)



For more information, please contact:

BRAD VIERGEVER
(248) 799 3146
bviergever@signatureassociates.com

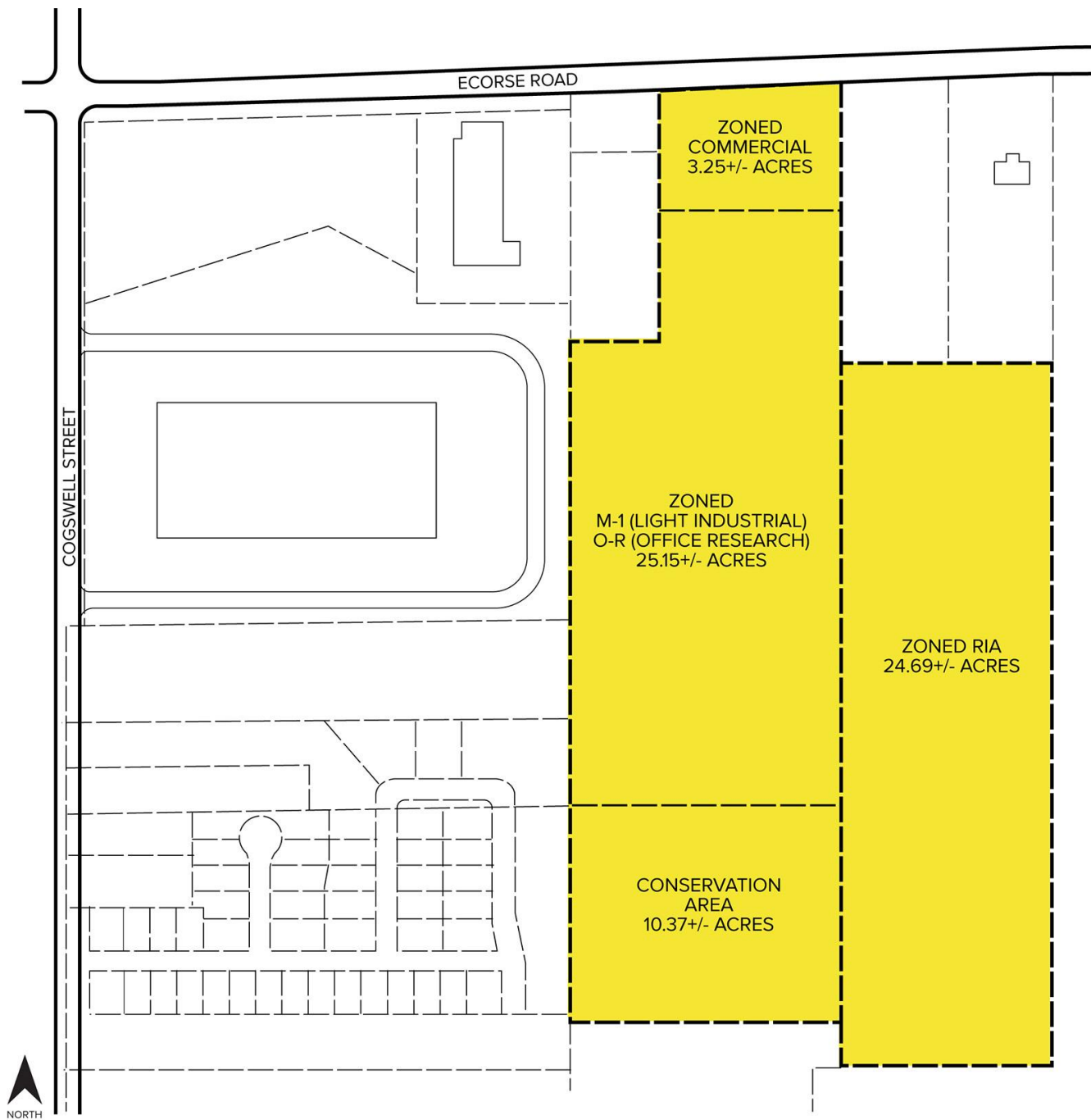
SIGNATURE ASSOCIATES
One Towne Square, Suite 1200
Southfield, MI 48076
www.signatureassociates.com

Ecorse Road – Romulus, Michigan

Land For Sale

63.56
Acres
AVAILABLE

Site Plan



For more information, please contact:
BRAD VIERGEVER
(248) 799 3146
bviergever@signatureassociates.com

SIGNATURE ASSOCIATES
One Towne Square, Suite 1200
Southfield, MI 48076
www.signatureassociates.com

Information is subject to verification and no liability for errors or omissions is assumed. Price is subject to change and listing withdrawal.