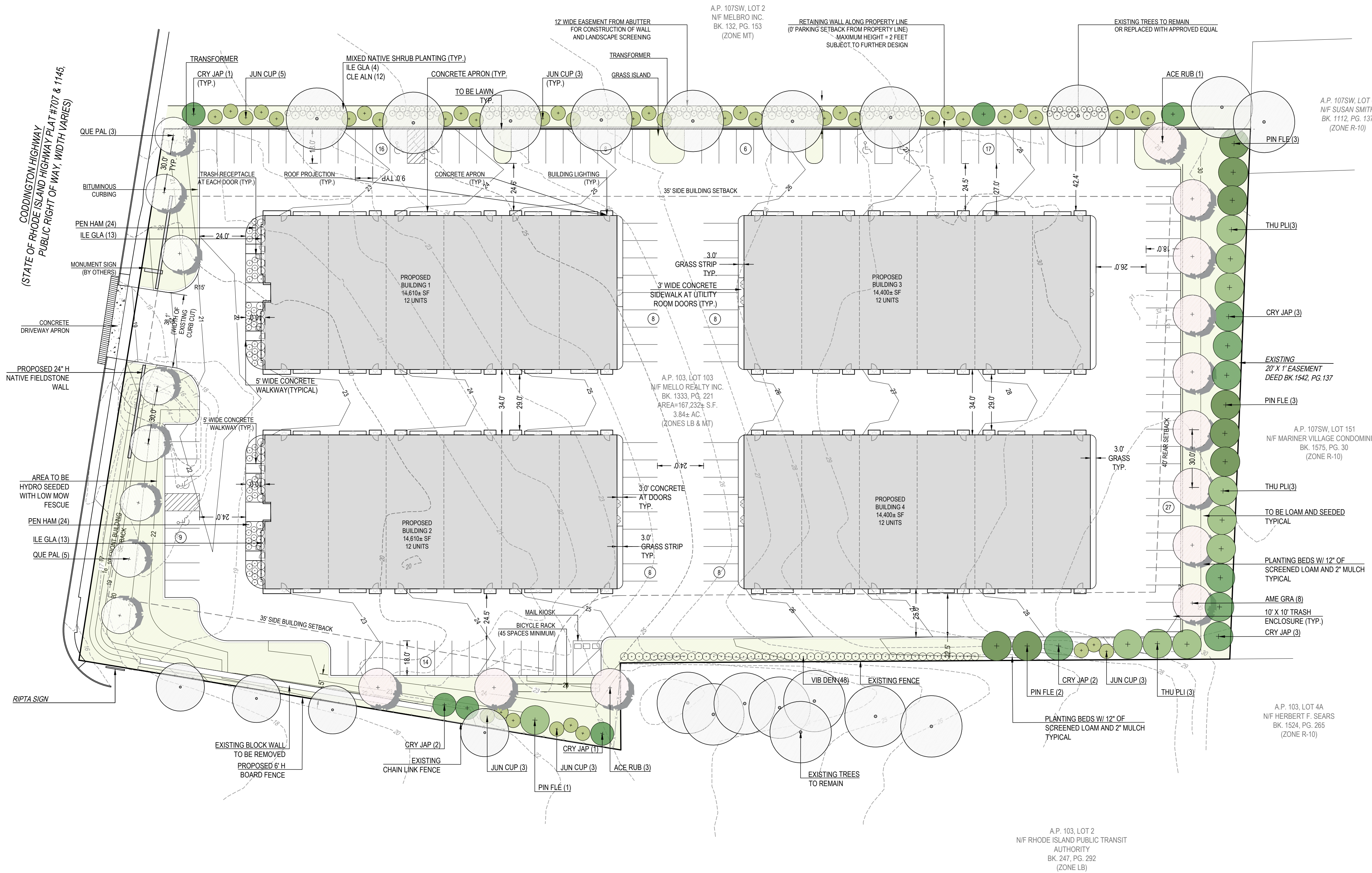


PLANTING NOTES

- LANDSCAPE CONTRACTOR SHALL VISIT SITE PRIOR TO SUBMITTING BID TO BECOME COMPLETELY FAMILIAR WITH SITE CONDITIONS.
- NO PLANTING WILL BE INSTALLED UNTIL ALL GRADING AND CONSTRUCTION HAS BEEN COMPLETED IN THE IMMEDIATE AREA.
- CONTRACTOR TO VERIFY ALL UTILITIES ON PROPERTY AND TO PROTECT ALL UTILITIES DURING EXCAVATION.
- IF THERE IS A DISCREPANCY BETWEEN THE NUMBER OF PLANTS SHOWN ON THE PLAN AND THE NUMBER OF PLANTS SHOWN IN THE PLANT LIST, THE NUMBER OF PLANTS SHOWN ON THE LIST WILL TAKE PRECEDENCE.
- ALL CONTAINER MATERIAL TO BE GROWN IN CONTAINER A MINIMUM OF SIX MONTHS.
- ALL MATERIAL SHALL COMPLY WITH THE LATEST EDITION OF THE AMERICAN STANDARD FOR NURSERY STOCK, ACCORDING TO THE AMERICAN ASSOCIATION OF NURSERYMEN.
- CONTRACTOR SHALL REPAIR ALL DAMAGE TO PROPERTY FROM PLANTING OPERATIONS AT NO COST TO THE OWNER.
- CONTRACTOR SHALL GUARANTEE NEW PLANT MATERIAL THROUGH ONE CALENDAR YEAR FROM DATE OF COMPLETED PLANTING.
- ALL PROPOSED PLANTS SHALL BE LOCATED CAREFULLY AS SHOWN ON THE PLANS AND THE PLACEMENT SHALL BE APPROVED BY THE LANDSCAPE ARCHITECT BEFORE THE INSTALLATION.
- ALL DISTURBED AREAS NOT TO BE PAVED OR PLANTED SHALL BE LOAMED AND SEEDED AS SHOWN. SEE SPECIFICATIONS FOR SOIL PREPARATION AND SEED MIX.
- TWO INCH (2") DEEP, FINELY SHREDDED BARK MULCH WILL BE INSTALLED AROUND ALL TREES AND SHRUBS THAT ARE ISOLATED FROM GROUND COVER AREAS AND GENERAL SHRUB MASSES.
- ALL PLANT MATERIAL SHALL BE INSPECTED BY THE LANDSCAPE ARCHITECT ON SITE PRIOR TO INSTALLATION. THE LANDSCAPE ARCHITECT WILL TAG ALL TREES AT THE NURSERY AND INSPECT THEM AFTER DELIVERY TO THE SITE. SEE SPECIFICATIONS FOR TAGGING, INSPECTION, AND ACCEPTANCE OF PLANT MATERIAL.
- LANDSCAPE ARCHITECT SHALL CONFIRM PLANT LIST AND APPROVE SUBSTITUTIONS OF PLANT VARIETIES PRIOR TO ORDERING OF MATERIAL.
- THE OWNER RESERVES THE RIGHT TO SUBSTITUTE PLANT SELECTIONS WITH PLANTS OF SIMILAR CHARACTERISTICS IF THE SPECIFIED PLANTS ARE NOT AVAILABLE IN ACCEPTABLE QUANTITIES OR CONDITIONS.
- LAWN AND PLANTING BED AREAS SHOULD BE DECOMPACTED TO A DEPTH OF 10-12" IN TWO DIRECTIONS.
- A SOIL TEST IS RECOMMENDED PRIOR TO PLANTING AND THE SOIL SHOULD BE AMENDED PER THE RECOMMENDED NEEDS OF THE SOIL AND PLANT MATERIAL.
- ORGANIC SOIL AMENDMENTS ARE TO BE BROADCAST UNIFORMLY OVER THE SURFACE OF THE AREA TO BE PLANTED AND INCORPORATE INTO THE SITE SOIL.
- ROCKS AND DEBRIS LARGER THAN 1" AND SHOULD BE REMOVED FROM THE SITE WHEN PREPARING THE FINISHED GRADE FOR PLANTING.

LANDSCAPE REQUIREMENTS (TOWN OF MIDDLETOWN)

- EXISTING VEGETATION (TREES AND VEGETATION ARE USED TO SATISFY LANDSCAPING REQUIREMENTS) TREES HAVING GREATER THAN 18" DBH THAT CANNOT BE PRESERVED ARE REPLACED WITH TWO TREES OF AT LEAST 4" DBH
- PLANTED LANDSCAPING OCCUPIES A MINIMUM OF 25% OF THE PROJECT AREA.  
 TOTAL PROJECT AREA = 167,232 SF  
 REQUIRED LANDSCAPE AREA = 41,808 SF (25% OF PROJECT AREA)  
 PROVIDED LANDSCAPE AREA = 34,732 SF (20.8% OF PROJECT AREA)  
 (INCLUDING EASEMENT ON EAST SIDE)
- SCREENING  
 SCREENING ELEMENT SUCH AS PLANTINGS, STONE WALLS, BERMS, AND/OR FENCES (OR A COMBINATION) PROVIDED ALONG ALL PROPERTY LINES
- BUFFERS  
 A LANDSCAPED BUFFER AT LEAST 10' IS PROVIDED ALONG ALL PROPERTY LINES (MAY BE REDUCED IF STONE WALL USED AS SCREENING ELEMENT) FOR ALL USES.  
 A LANDSCAPED BUFFER AT LEAST 10' WIDE, WHICH IS DEFINED BY CURBING AND MAY INCLUDE SIDEWALKS BUT MUST INCLUDE A MINIMUM 5' PLANTING STRIP, IS PROVIDED BETWEEN BUILDINGS AND PARKING LOTS/DRIVEWAYS
- PLANTINGS  
 PLANTINGS ARE NONINVASIVE SPECIES, AND NATIVE TO AQUIDNECK ISLAND IF POSSIBLE
- TREES  
 DECIDUOUS TREES - 8 TREES PROPOSED, EXISTING TREES TO REMAIN  
 PLANTED ALONG STREET SIDE PROPERTY BOUNDARY, PRIVATE STREETS, AND INTERNAL DRIVEWAYS  
 PLANTED IN STRIPS OR TREE WELLS LOCATED BETWEEN THE SIDEWALK AND CURB.  
 SPACED NO FURTHER THEN 30' ON CENTER  
 A MINIMUM OF 4" DBH AT TIME OF PLANTING
- PARKING LOT TREES - 26 TREES REQUIRED, 20 TREES PROPOSED  
 MINIMUM OF ONE TREE PROVIDED FOR EVERY 5 PARKING SPACES  
 TREES AT LEAST 4" CALIBER DBH AND 7' TALL AT TIME OF PLANTING  
 SURROUNDED BY AT LEAST 25 SF OF PERMEABLE UNPAVED AREA
- SCENIC VIEWS  
 SCENIC VIEWS AND HISTORICALLY SIGNIFICANT LANDSCAPE FEATURES PRESERVED TO THE MAXIMUM EXTENT REASONABLY POSSIBLE  
 CONSISTENT WITH TOWN CODE CHAPTER 96: TREE PRESERVATION AND PROTECTION  
 CONSISTENT WITH TOWN CODE CHAPTER 97: STONE WALLS
- MAINTENANCE  
 FOR LARGER PROJECTS OR SIGNIFICANT LANDSCAPE FEATURES, A MAINTENANCE AGREEMENT AND/OR BOND MAY BE REQUIRED  
 LANDSCAPE MAINTENANCE PLANS ARE REQUIRED BY SECTION 523, AND PERFORMANCE AND MAINTENANCE GUARANTEES ARE REQUIRED UNDER ARTICLE 7
- REVISIONS TO THE PLANTING PLAN OR PLANT LIST SHALL BE SUBJECT TO APPROVAL AND REVIEW BY THE TREE COMMISSION.



PLANTING LEGEND					
SYMBOL	BOTANICAL NAME	COMMON NAME	QTY	SIZE	
<b>DECIDUOUS TREES</b>					
	ACER RUBRUM 'FRANK JR.' PP 16769	REDPOINTE® MAPLE	4	4" CAL.	
	AMELANCHIER × GRAND 'AUTUMN BRILLIANCE'	SERVICEBERRY	8	10/12" B&B CLUMP	
	QUERCUS PALUSTRIS	PIN OAK	8	4" CAL.	
<b>EVERGREENS</b>					
	CRYPTOMERIA JAPONICA 'YOSHINO'	JAPANESE CEDAR	14	8/10" B&B	
	JUNIPERUS VIRG. 'CUPRESSIFOLIA'	EASTERN REDCEDAR	41	7/8" B&B	
	PINUS FLEXILIS 'VANDERWOLF'S PYRAMID'	VANDERWOLF'S PYRAMID LIMBER PINE	9	8/10" B&B	
	THUJA X 'GREEN GIANT'	GREEN GIANT WESTERN ARBORVITAE	9	8/10" B&B	
<b>NATIVE SHRUBS</b>					
	CLETHRA ALNIFOLIA 'HUMMINGBIRD'	HUMMINGBIRD CLETHRA	96	7 GAL.	
	ILEX GLABRA 'SHAMROCK'	SHAMROCK INKBERRY	58	2.5/3" B&B	
	VIBURNUM DENTATUM 'CHICAGO LUSTRE'	ARROWWOOD VIBURNUM	48	3/4" B&B	
<b>GRASSES</b>					
	PENNISETUM ALOPECUROIDES 'HAMELN'	HAMELN FOUNTAIN GRASS	48	1 GAL. CONT.	
	LAWN AREAS TO BE HYDRO SEEDED WITH A DROUGHT TOLERANT FESCUE			22,817 SF	
	EXISTING TREES TO REMAIN				

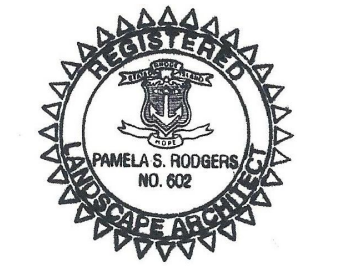


VERDE DESIGN  
 18 WILDFLOWER LANE  
 JAMESTOWN, RI 02835  
 O: 401 619-0562  
 verdegardn@gmail.com

ARCHITECT  
 CORDTSEN DESIGN ARCHITECTURE  
 42 W MAIN ROAD  
 MIDDLETOWN, RI 02842  
 401 619 4689

CIVIL ENGINEER  
 NORTHEAST ENGINEERS & CONSULTANTS, INC.  
 6 VALLEY ROAD  
 MIDDLETOWN RI 02842  
 401 849 0510

CODDINGTON  
 COVE COMMONS  
 A.P. 103 LOT 103  
 300 CODDINGTON HIGHWAY  
 MIDDLETOWN, RI



PROJECT NUMBER: 23.604  
 DRAWN BY: KD  
 CHECKED BY: PR  
 SCALE: 1"=30'-0"  
 DATE: 09.10.2024

REVISIONS:

NO.	DATE	DESCRIPTION
1	04.10.2024	UPDATE PLANT SPECIES AND QTY
2	09.10.2024	UPDATE PLANT LIST AND SPECS

LANDSCAPE PLAN

L1.0