



HOULIHAN LAWRENCE
COMMERCIAL

CAROLYNN DITTMANN

Licensed Associate Real Estate Broker
M. 845.417.1515
CDittmann@houlihanlawrence.com

Houlihan Lawrence Commercial
800 Westchester Avenue, Suite N-517
Rye Brook, NY 10573
O. 914 798 4900



Retail Space For Lease

**1600 ROUTE 82
HOPEWELL JUNCTION, NY 12533**

FOR LEASE \$15.00 PSF/NNN

- Nesheiwat Corners a newly constructed retail site next to Dunkin Donuts by the Route 82 exit off the Taconic State Parkway
- High traffic count with many cars entering the site daily
- Great opportunity for high exposure and plenty of parking
- 1 space remaining
- Unit # 3: 1,100 SF



HOULIHAN LAWRENCE
COMMERCIAL

CAROLYNN DITTMANN

Licensed Associate Real Estate Broker

M. 845.417.1515

CDittmann@houlihanlawrence.com

Houlihan Lawrence Commercial
800 Westchester Avenue, Suite N-517
Rye Brook, NY 10573
O. 914 798 4900

Property Photos

1600 ROUTE 82
HOPEWELL JUNCTION, NY 12533

FOR LEASE \$15.00 PSF/NNN



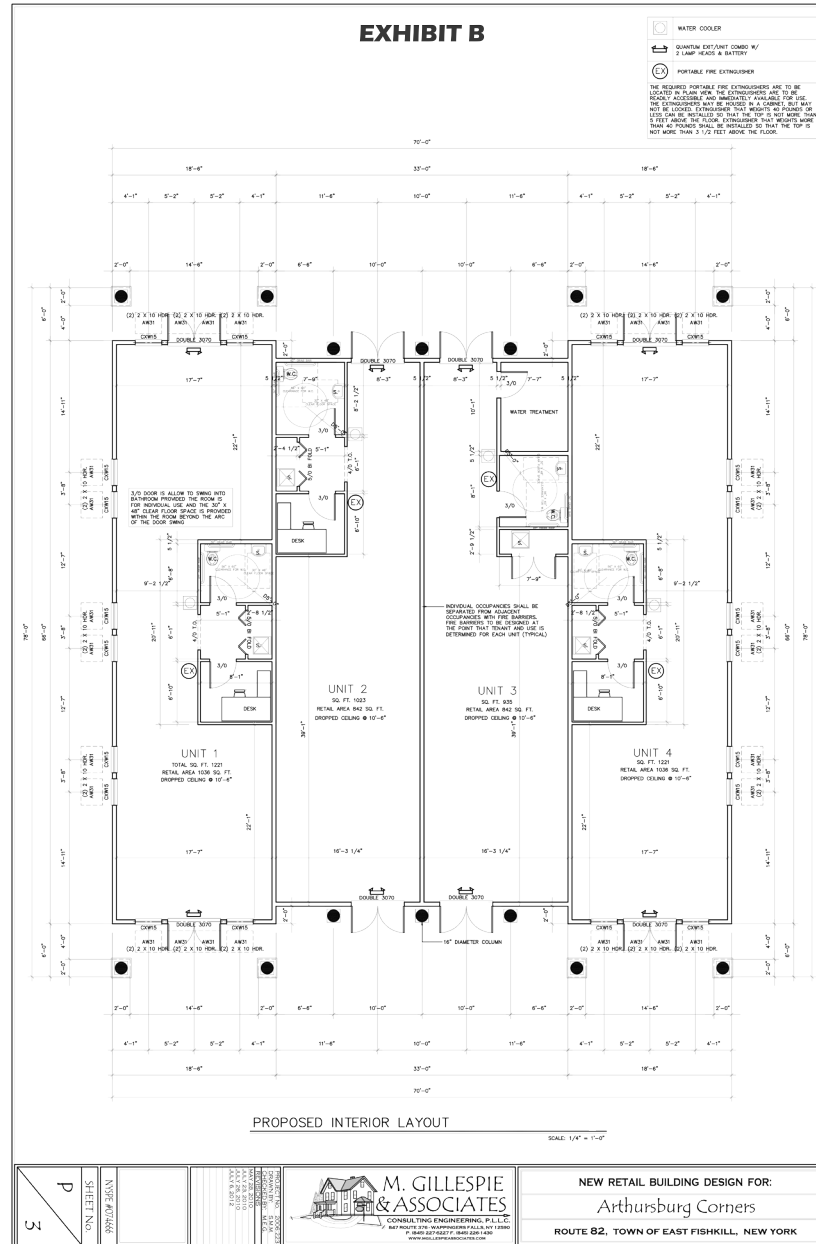


HOULIHAN LAWRENCE
COMMERCIAL

Building Layout

1600 ROUTE 82
HOPEWELL JUNCTION, NY 12533

FOR LEASE \$15.00 PSF/NNN



CAROLYNN DITTMANN
Licensed Associate Real Estate Broker
M. 845.417.1515
CDittmann@houlihanlawrence.com

Houlihan Lawrence Commercial
800 Westchester Avenue, Suite N-517
Rye Brook, NY 10573
O. 914.798.4900



HOULIHAN LAWRENCE
COMMERCIAL

CAROLYNN DITTMANN

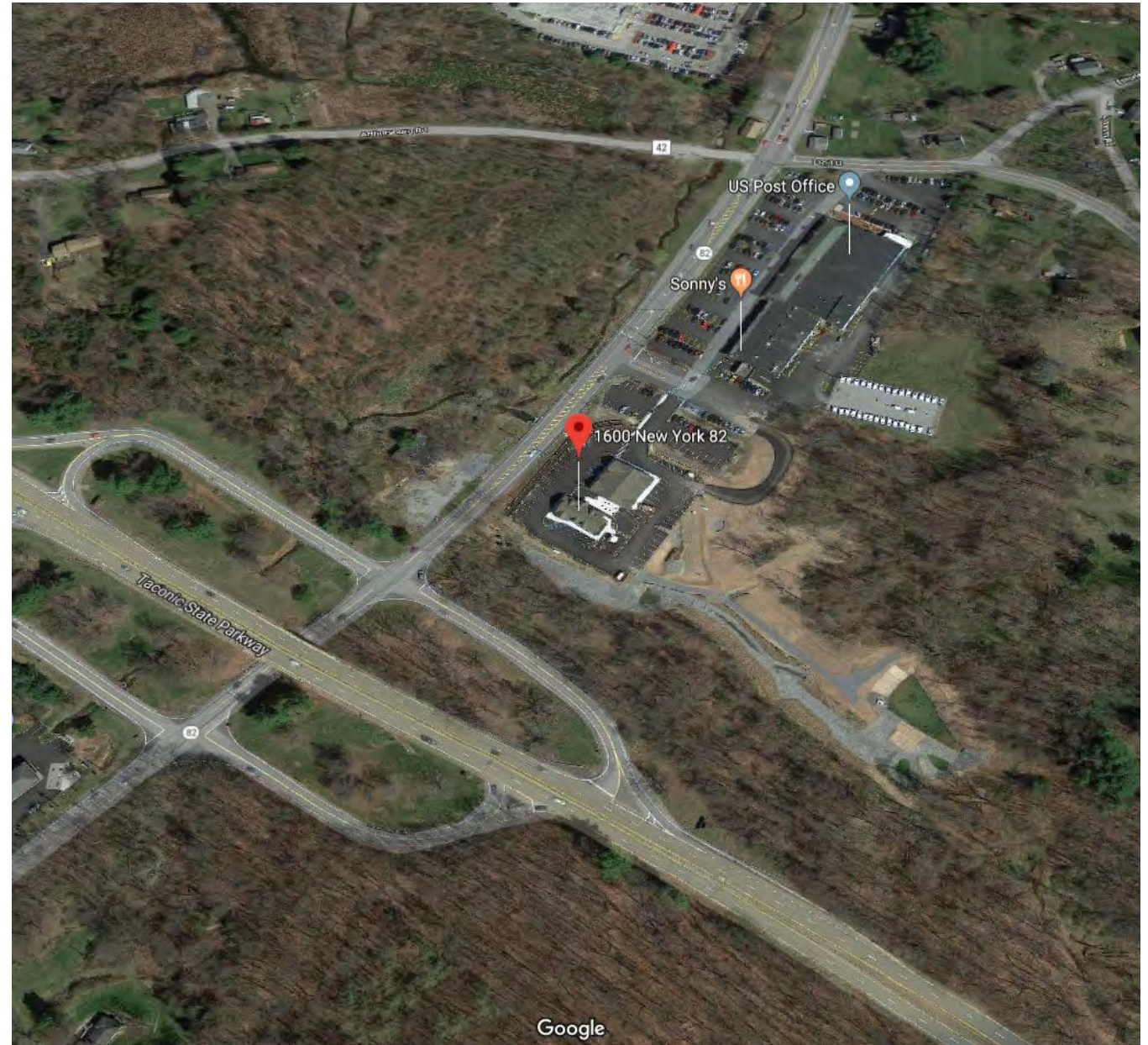
Licensed Associate Real Estate Broker
M. 845.417.1515
CDittmann@houlihanlawrence.com

Houlihan Lawrence Commercial
800 Westchester Avenue, Suite N-517
Rye Brook, NY 10573
O. 914 798 4900

Aerial View

1600 ROUTE 82
HOPEWELL JUNCTION, NY 12533

FOR LEASE \$15.00 PSF/NNN





HOULIHAN LAWRENCE
COMMERCIAL

Regional Map

1600 ROUTE 82
HOPEWELL JUNCTION, NY 12533

FOR LEASE \$15.00 PSF/NNN



CAROLYNN DITTMANN

Licensed Associate Real Estate Broker
M. 845.417.1515
CDittmann@houlihanlawrence.com

Houlihan Lawrence Commercial
800 Westchester Avenue, Suite N-517
Rye Brook, NY 10573
O. 914 798 4900

The information contained in this Offering Memorandum is confidential, furnished solely for the purpose of review by a prospective purchaser of certain information relating to the property mentioned herein (the "Property"), and is not to be used for any other purpose or made available to any other person without the prior written consent of HLCG. The material is subject to errors and omissions and based on part upon information supplied by sources deemed reliable.