



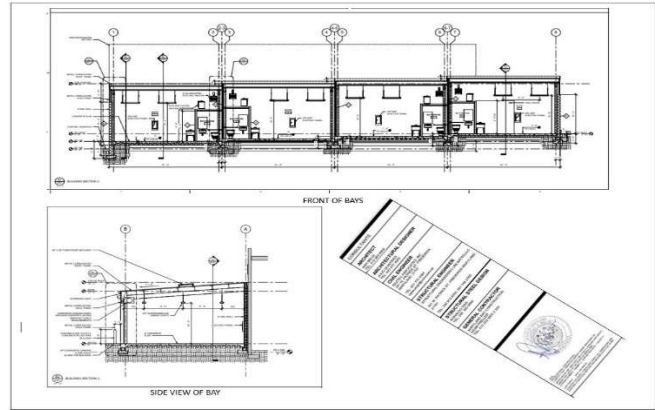
RE/MAX
ADVANTAGE



2714 MATHEWS ST, BALTIMORE, MD



VIEW FROM MATHEWS STREET



PLANS AND DRAWINGS AVAILABLE

Prime Commercial Bays for Lease

Welcome to the East Harwood Innovation Hub, a premier industrial creative commercial space offering an exceptional opportunity for businesses seeking a dynamic and strategic location in the heart of the Harwood community near JHU in Baltimore, Maryland. With its prime position at 2714 Mathews Street, and ultimately eight 625+/-SF bays will be available, this property presents an ideal setting for businesses of all sizes to thrive and innovate.

Key Features:

1. **Strategic Location:** Situated in the thriving heart of Baltimore, the East Harwood Innovation Hub enjoys close proximity to major highways, public transportation, and a highly accessible location, making it a convenient choice for both customers and employees.
2. **Flexible Space:** Our commercial bays provide flexible and versatile spaces, allowing businesses to tailor their environment to meet their specific needs. We envision a home for artists, craftsmen, tradesmen, wood workers, welders, tech innovators and more.
3. **Modern Amenities:** This property is equipped with modern amenities to support your business operations, access to including high-speed internet connectivity, ample parking, and security measures to ensure a safe and productive work environment. Each unit has its own private restroom.
4. **Versatile Usage:** The East Harwood Innovation Hub is designed to accommodate a diverse range of businesses. Whether you are in retail, manufacturing, trades or services, our commercial bays can be customized to suit your unique requirements.
5. **Open Floor Plan:** The open floor plan of these commercial bays allows for creative and flexible layout options, enabling businesses to adapt and evolve as needed.
6. **Natural Light:** Each unit has a 36" x36" skylight and 10'x 12' Overhead Door offering an abundance of natural light, creating an inviting and comfortable workspace.
7. **Community Atmosphere:** Join this vibrant business community and have the opportunity to network, collaborate, and grow alongside other innovative companies in the area.
8. **Parking:** Each bay is accessible for drive-in parking with 10' x12' Overhead Doors. Additional street parking is available on Mathew's Street.
9. **Professional Management:** The East Harwood Innovation Hub is professionally managed to ensure that your leasing experience is smooth and hassle-free.

Contact Mark Regal

Cell: 443-250-1321 Office: 443-573-9222

Mark@GreatestMoves.com

1900 Thames Street | Baltimore, MD 21231

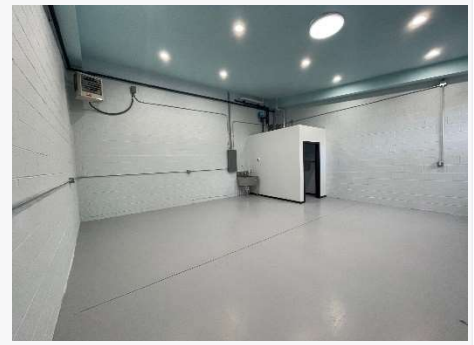


RE/MAX
ADVANTAGE





RE/MAX
ADVANTAGE



Surrounding Amenities: The property is conveniently located near a variety of amenities, including restaurants, shops, and recreational options, making it an attractive location for employees and visitors alike. If you are seeking a business space that fosters growth, innovation, and success, the East Harwood Innovation Hub at 2714 Mathews St in Baltimore, MD, is the ideal destination. Do not miss this opportunity to become a part of this dynamic business community.

For more information or to schedule a tour, please contact Mark Regal 443-250-1321 Mark@GreatestMoves.com.

Contact Mark Regal

Cell: 443-250-1321 Office: 443-573-9222

Mark@GreatestMoves.com

1900 Thames Street | Baltimore, MD 21231



RE/MAX
ADVANTAGE

