



- Ideal mini storage opportunity
- Below market seller financing available
- 5% fee to procuring broker

For Sale/Lease

Major Price Reduction

\$850,000/\$5.59 PSF

Bethel Island, CA

3.49 Acres

Site

John Brecher
 Vice President, Retail
 +1 916 440 1826
 john.brecher@jll.com
 RE License #01897931

Torren Ragan
 Senior Associate, Retail
 +1 916 440 1827
 torren.ragan@jll.com
 RE License #02046828

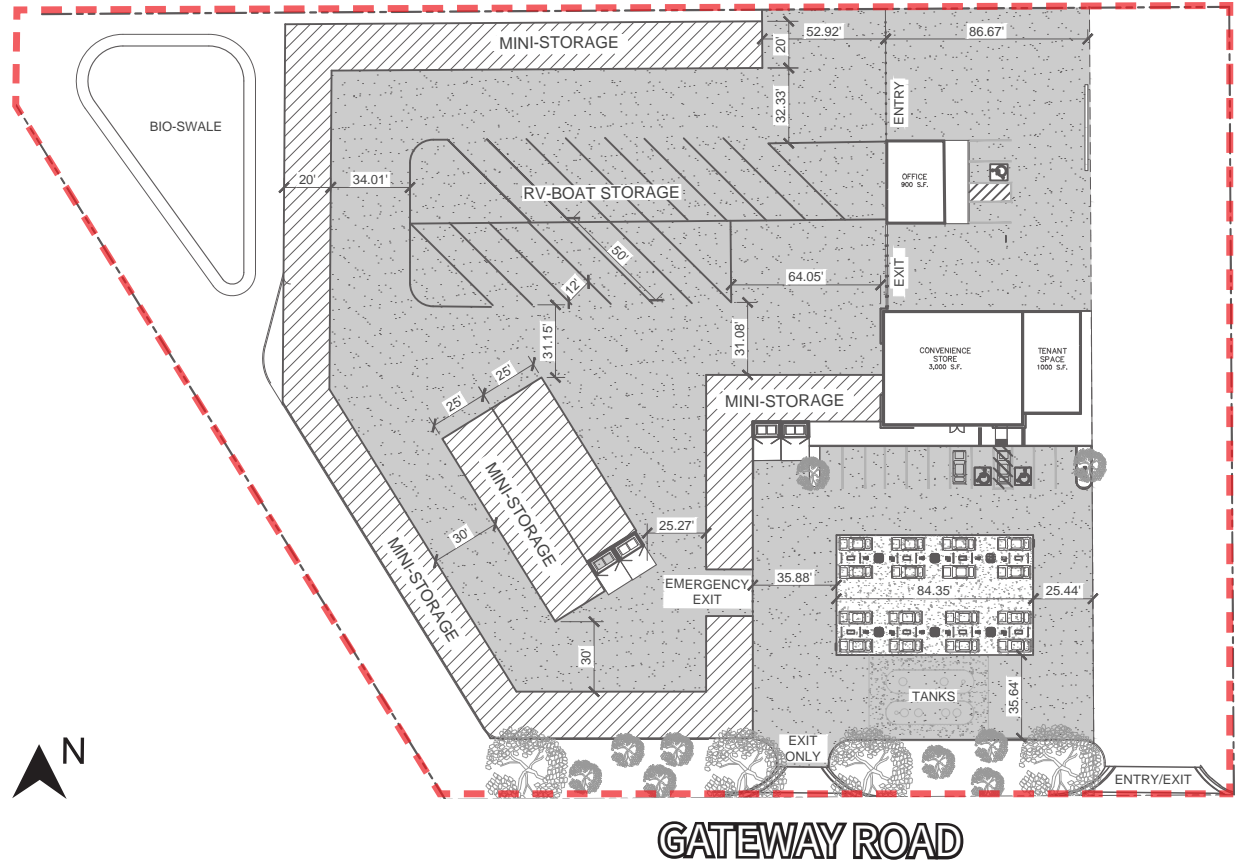
Jones Lang LaSalle Brokerage, Inc.
 RE License #01856260

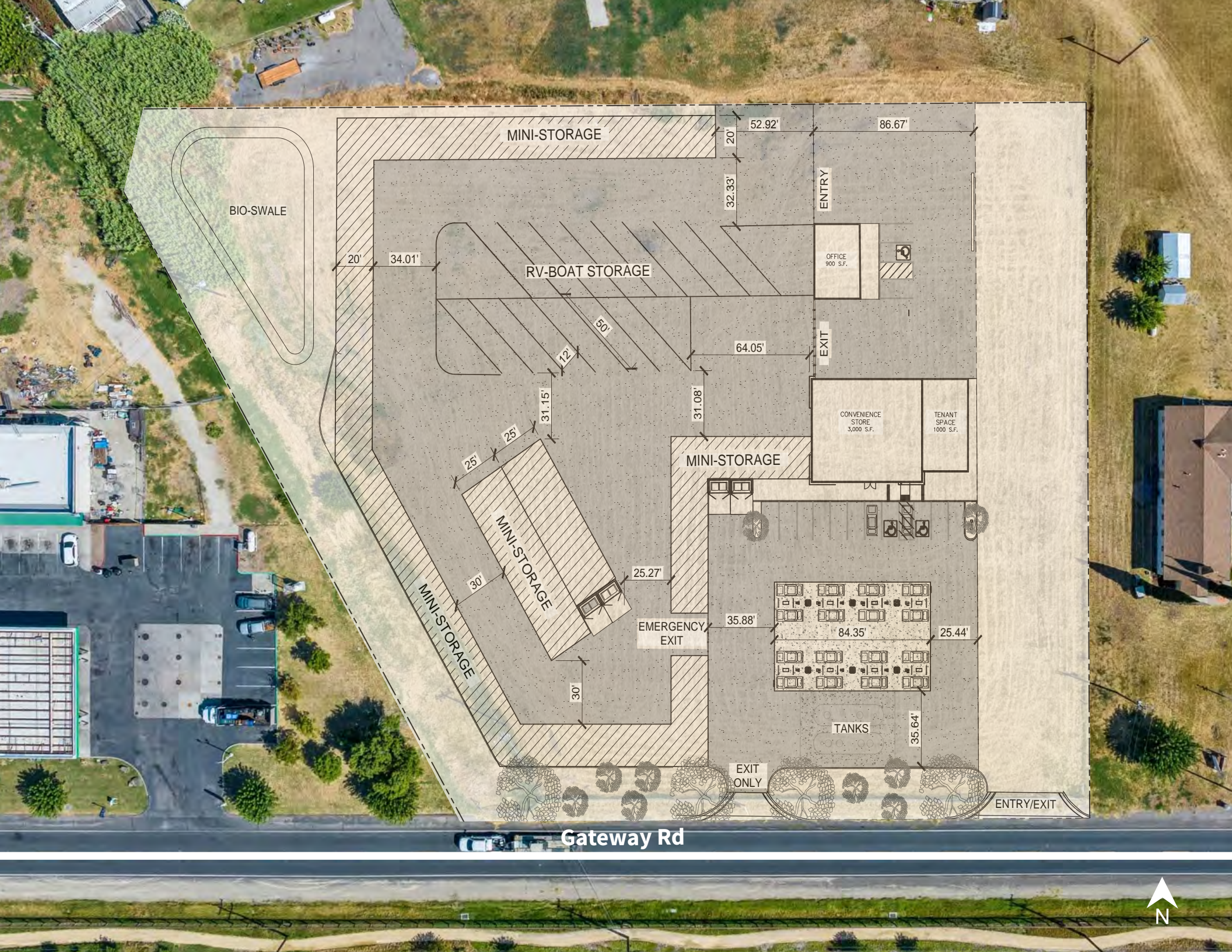


T STUDIOS

Property Info

Address/ID	Gateway Road, Bethel Island, CA 94511
APN	029-050-065
Parcel Size	3.49 AC
Zoning	R-B (Retail Business), T-1 (Mobile Home/Manufactured Home Park)
Condition	Raw land (utilities stubbed on Gateway Rd.)
Price	\$850,000/\$5.59 PSF
Zoning	Link





BIO-SWALE

MINI-STORAGE

RV-BOAT STORAGE

ENTRY

EXIT

OFFICE
900 S.F.

CONVENIENCE
STORE
3,000 S.F.

TENANT
SPACE
1000 S.F.

MINI-STORAGE

MINI-STORAGE

MINI-STORAGE

EMERGENCY
EXIT

TANKS

EXIT
ONLY

ENTRY/EXIT

Gateway Rd



Brentwood

Oakley

Antioch

For Sale/Lease

Major Price Reduction

\$850,000/\$5.59 PSF

Bethel Island, CA

3.49 Acres

- Ideal mini storage opportunity
- Below market seller financing available
- 5% fee to procuring broker

Site

Gateway Rd

Delta Coves Dr

HT STUDIOS

John Brecher

Vice President, Retail
 +1 916 440 1826
 john.brecher@jll.com
 RE License #01897931

Torren Ragan

Senior Associate, Retail
 +1 916 440 1827
 torren.ragan@jll.com
 RE License #02046828

Although information has been obtained from sources deemed reliable, JLL does not make any guarantees, warranties or representations, express or implied, as to the completeness or accuracy as to the information contained herein. Any projections, opinions, assumptions or estimates used are for example only. There may be differences between projected and actual results, and those differences may be material. JLL does not accept any liability for any loss or damage suffered by any party resulting from reliance on this information. If the recipient of this information has signed a confidentiality agreement with JLL regarding this matter, this information is subject to the terms of that agreement.
 ©2026 Jones Lang LaSalle Brokerage, Inc. All rights reserved.

