

For Lease

Southpark Industrial Park

5050-5200 Commerce Road
Richmond, VA

Southpark I - Suite 5130

- 26,666 SF flex space available
- 5 covered docks
- Frontage and signage visibility on I-95
- Dual fiber feeds serviced by Comcast and Verizon Fios
- Located in close proximity to I-95 and the Port of Richmond

Contact us:

Wood Thornton, SIOR

Senior Vice President
+1 804 267 7221
wood.thornton@colliers.com

Jimmy Martin, SIOR

Senior Vice President
+1 804 267 7218
jimmy.martin@colliers.com

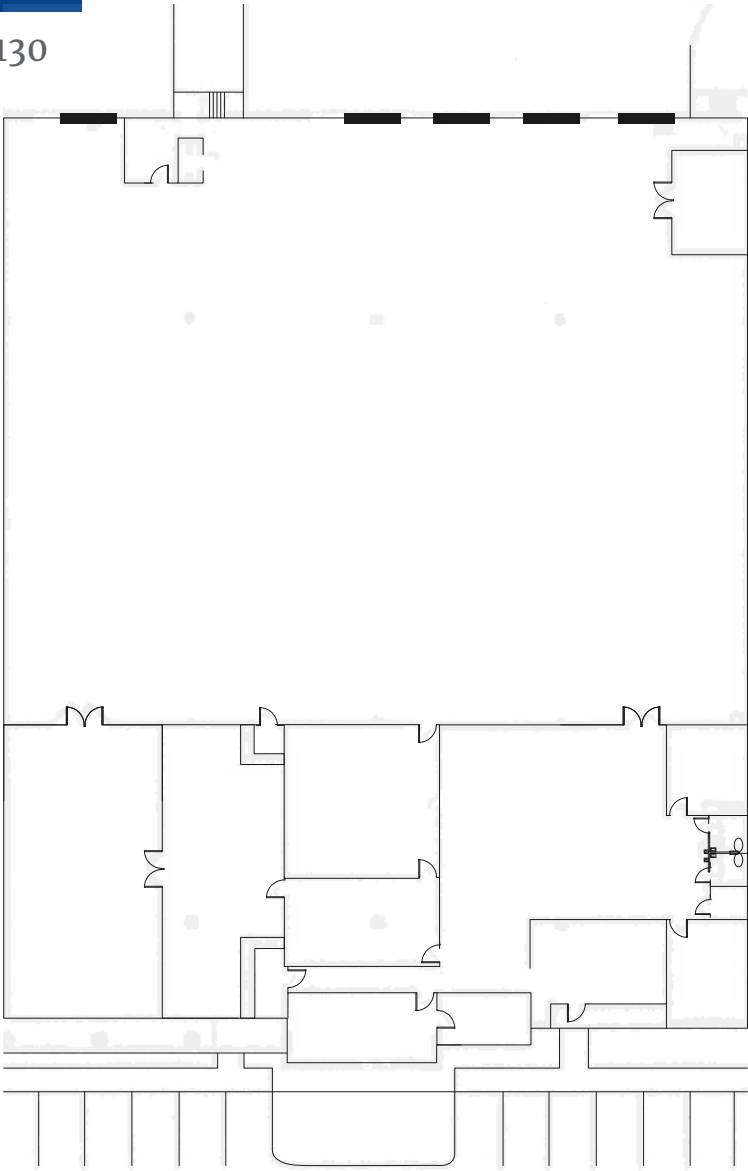
Colliers

2221 Edward Holland Dr
Suite 600 | Richmond, VA
P: +1 804 320 5500

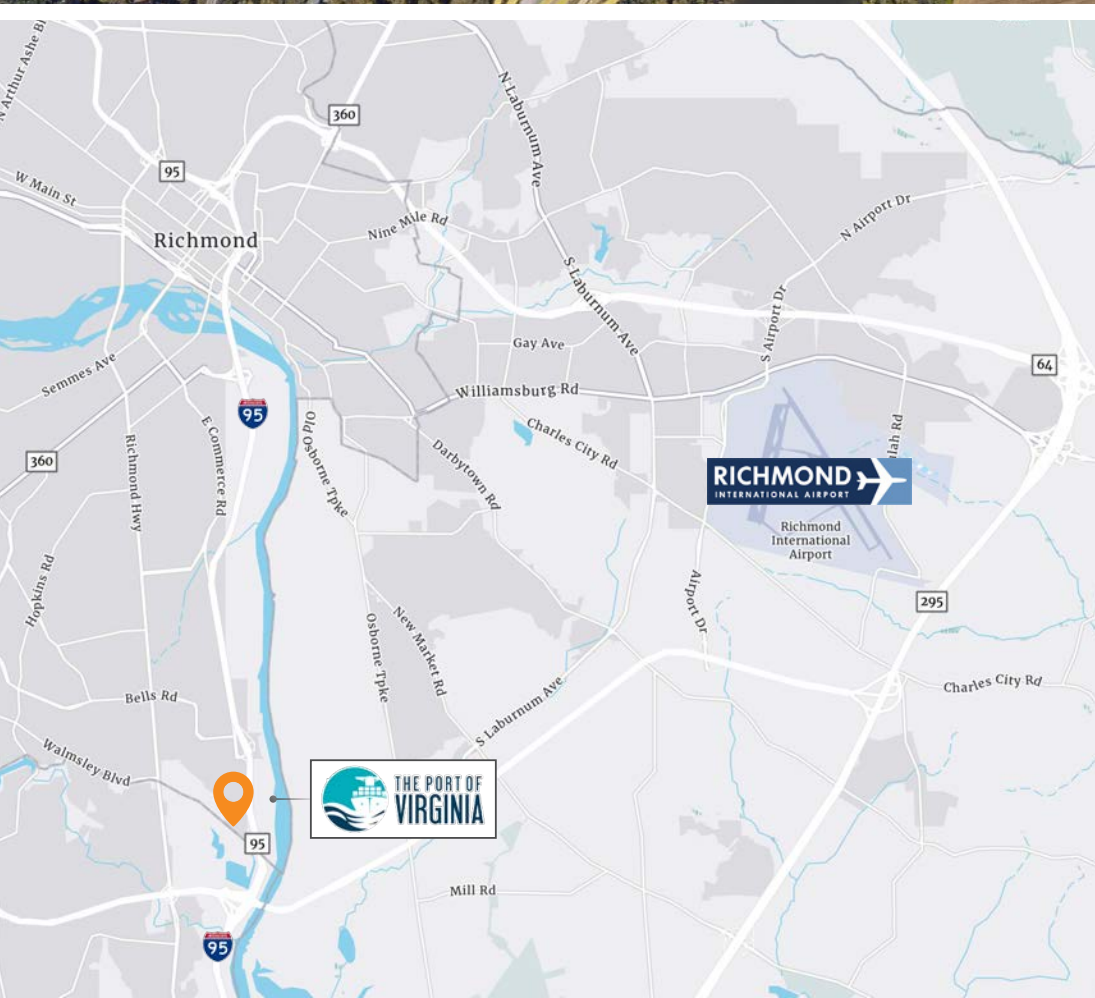
Copyright © 2025 Colliers International. Information herein has been obtained from sources deemed reliable, however its accuracy cannot be guaranteed. The user is required to conduct their own due diligence and verification.

Southpark I - Suite 5130

Southpark I - Suite 5130
26,666 SF



Southpark I - Suite 5130



Contact us:

Wood Thornton, SIOR

Senior Vice President
+1 804 267 7221
wood.thornton@colliers.com

Jimmy Martin, SIOR

Senior Vice President
+1 804 267 7218
jimmy.martin@colliers.com

Colliers

2221 Edward Holland Dr
Suite 600 | Richmond, VA
P: +1 804 320 5500