

Premier Signalized Intersection

Can be rezoned for commercial use CC



SITE

Traffic Light

[Click Here For Zoning Uses](#)

ADDRESS

SIZE

TYPE

FLU

PRICE

561 N Washington Ave
Titusville, FL 32796

2.14 AC
Acres

Land
VACANT

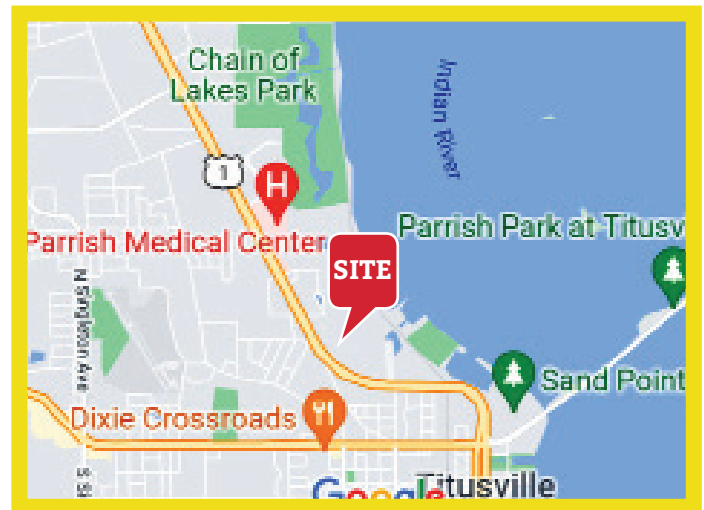
Downtown
Mixed Use

\$700,000

Property Highlights:

- ✓ Premier signalized intersection vacant land for commercial use available.
- ✓ Zoned HM
- ✓ On U.S.1 near Hospital, Eastern Florida State College and Chain of Lakes Regional Park
- ✓ 220 feet of frontage on u.S. 1.
- ✓ Downtown mixed use - commercial zoning
- ✓ 20,000 ADT

[CLICK HERE TO WATCH VIDEO](#)



Duane A. Watson

Broker

Office: (321) 459-0000 Ext. 15
Cell: (321) 223-8845

561 N Washington Ave Titusville, FL 32796

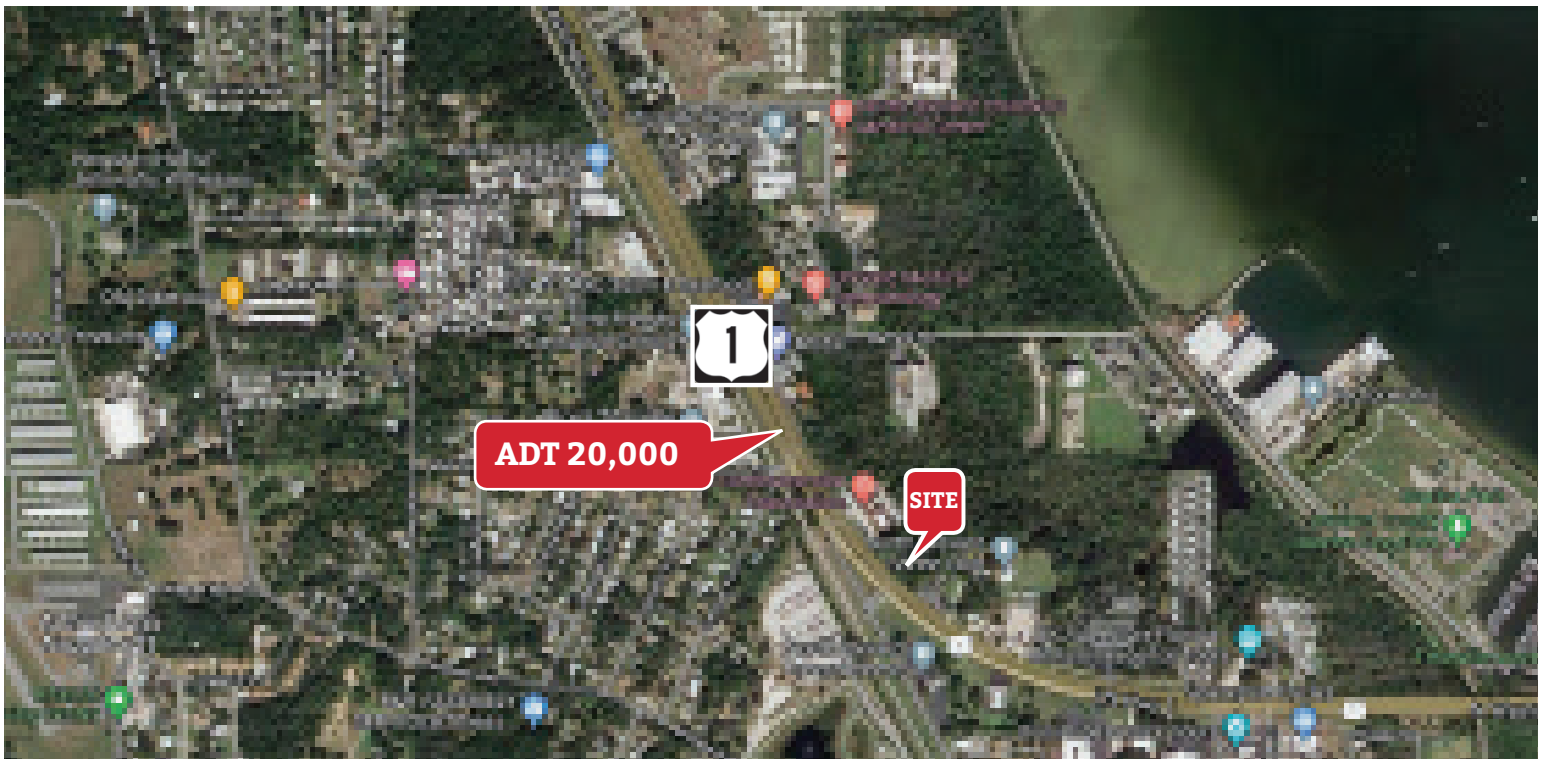


Summary

PRICE:	\$700,000
TYPE:	Commercial
ZONING:	HM
LOT SIZE:	2.14 Acres

Property Demographics

	2 MILE	5 MILE	10 MILE
2025 Total Population:	16,793	56,867	83,225
Avg Household Income:	\$53,276	\$63,330	\$70,209
2025 Total Households:	7,090	24,024	35,002



SOUTH VIEW

