

1700 W MAIN

1700 W MAIN ST OKLAHOMA CITY, OK 73106



PROPERTY DESCRIPTION

Price Edwards and Company is proud to bring 1700 W Main to the industrial leasing market. With various ways to occupy this space, it is flexible to a variety of uses and businesses. Long term ownership brings a great partnership to this opportunity for it's next tenants. Reach out today to inquire on this property!

PROPERTY HIGHLIGHTS

- I-2 Zoning
- Close access to Downtown
- Shell space ready for it's next iteration
- Can be split into 4, 5,000+/- units or taken as a whole
- Great Highway access off Virginia

OFFERING SUMMARY

Lease Rate:	\$4.50 SF/yr (NNN)
Available SF:	19,334 SF
Zoning:	I-2
Building Size:	19,334 SF

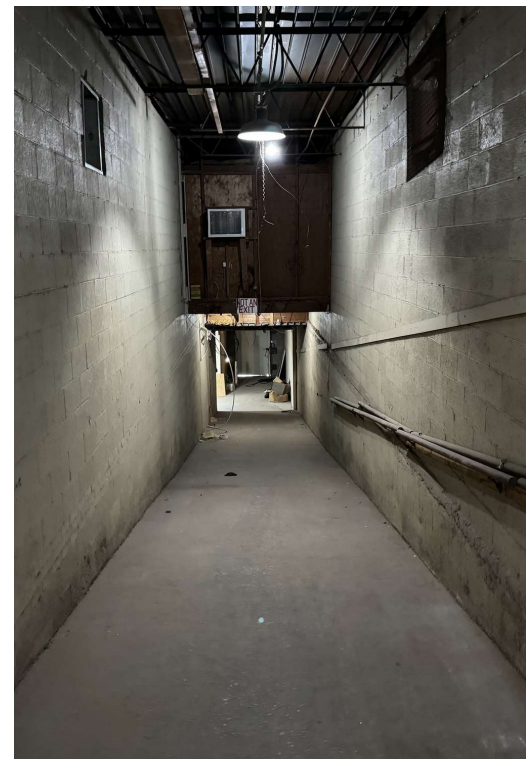
ANDREW HOLDER

aholder@priceedwards.com

O: 580.430.5124

1700 W MAIN

1700 W MAIN ST OKLAHOMA CITY, OK 73106

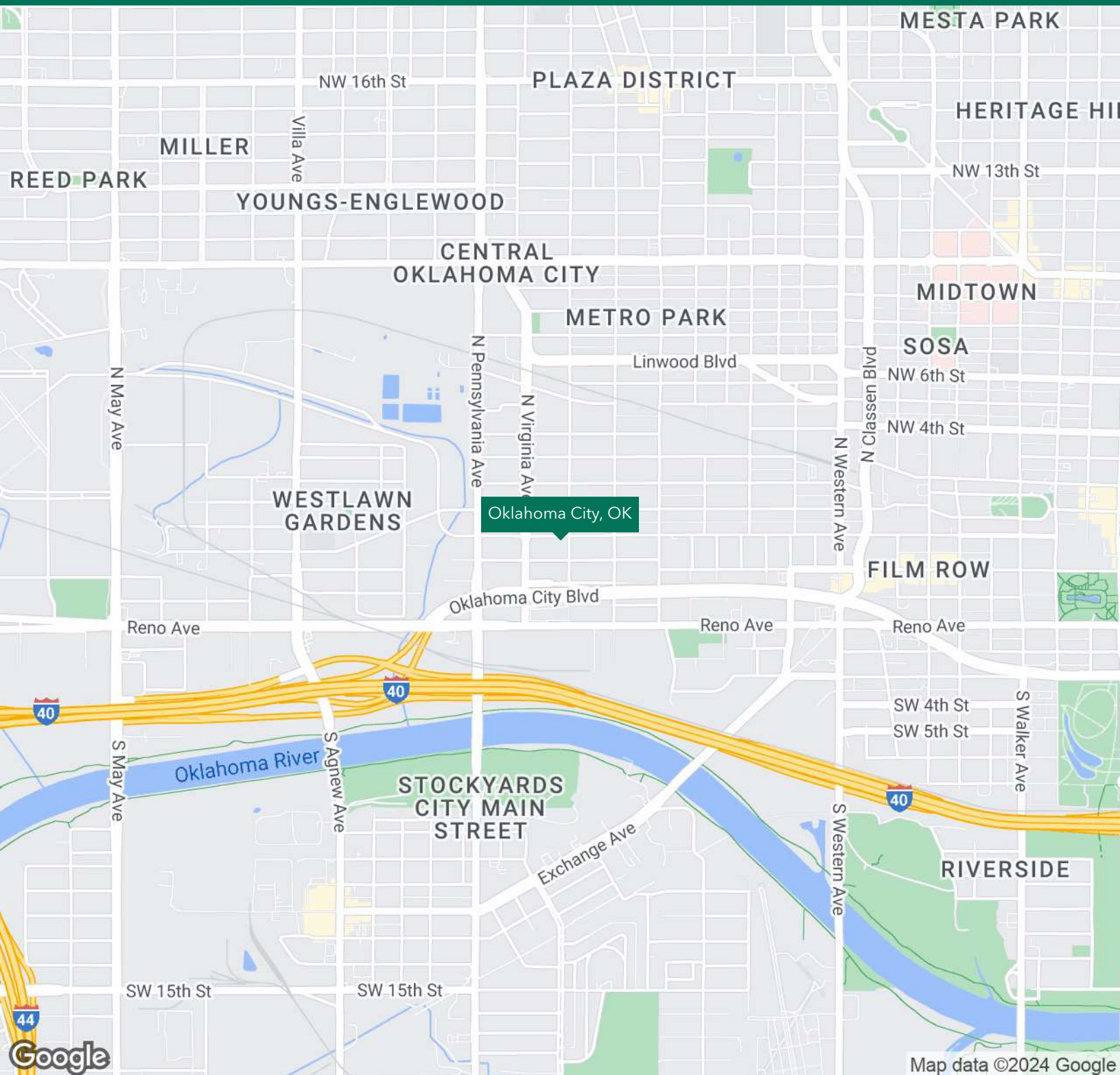


ANDREW HOLDER
aholder@priceedwards.com
O: 580.430.5124

**PRICE
EDWARDS**
AND COMPANY

1700 W MAIN

1700 W MAIN ST OKLAHOMA CITY, OK 73106



ANDREW HOLDER

aholder@priceedwards.com

O: 580.430.5124

**PRICE
EDWARDS**
AND COMPANY