



LAND

FOR LEASE

±0.63-ACRE INDUSTRIAL LAND

106-126 Halladay Street, Jersey City, NJ 07304

For More Information, Contact the Exclusive Brokers

JASON M. CRIMMINS, CCIM, SIOR

President

jmcrimmins@blauberg.com
973.379.6644 x122

ALESSANDRO (ALEX) CONTE, CCIM, SIOR

Executive Vice President

aconte@blauberg.com
973.379.6644 x131

PETER J. MURANO, JR., SIOR

Managing Executive Director

pjmurano@blauberg.com
973.379.6644 x114



830 Morris Turnpike, Suite 201, Short Hills, NJ 07078

www.blauberg.com

±0.63-ACRE INDUSTRIAL LAND

106-126 Halladay Street, Jersey City, NJ 07304



LOCATION DESCRIPTION

- Approx. 1.7 Miles to I-78
- Approx. 4.9 Miles to Holland Tunnel
- Approx. 6.5 Miles to NJ Turnpike
- Approx. 10.1 Miles to Newark Liberty International Airport

OFFERING SUMMARY

Lease Rate:	\$15,000.00 per month (NNN)
Lot Size:	0.63 Acres

PROPERTY HIGHLIGHTS

- ±0.63-Acre Land
- Block 21502, Lots 18 and 19
- Buildings on Site to be Demolished
- Zoned Industrial

DEMOGRAPHICS	0.25 MILES	0.5 MILES	1 MILE
Total Households	799	3,479	16,250
Total Population	2,120	8,811	41,390
Average HH Income	\$58,995	\$53,885	\$63,043

For More Information, Contact the Exclusive Brokers

JASON M. CRIMMINS, CCIM, SIOR
President
 jmcrimmins@blauberg.com
 973.379.6644 x122

ALESSANDRO (ALEX) CONTE, CCIM, SIOR
Executive Vice President
 acont@blauberg.com
 973.379.6644 x131

PETER J. MURANO, JR., SIOR
Managing Executive Director
 pjmurano@blauberg.com
 973.379.6644 x114

830 Morris Turnpike
 Suite 201
 Short Hills, NJ 07078

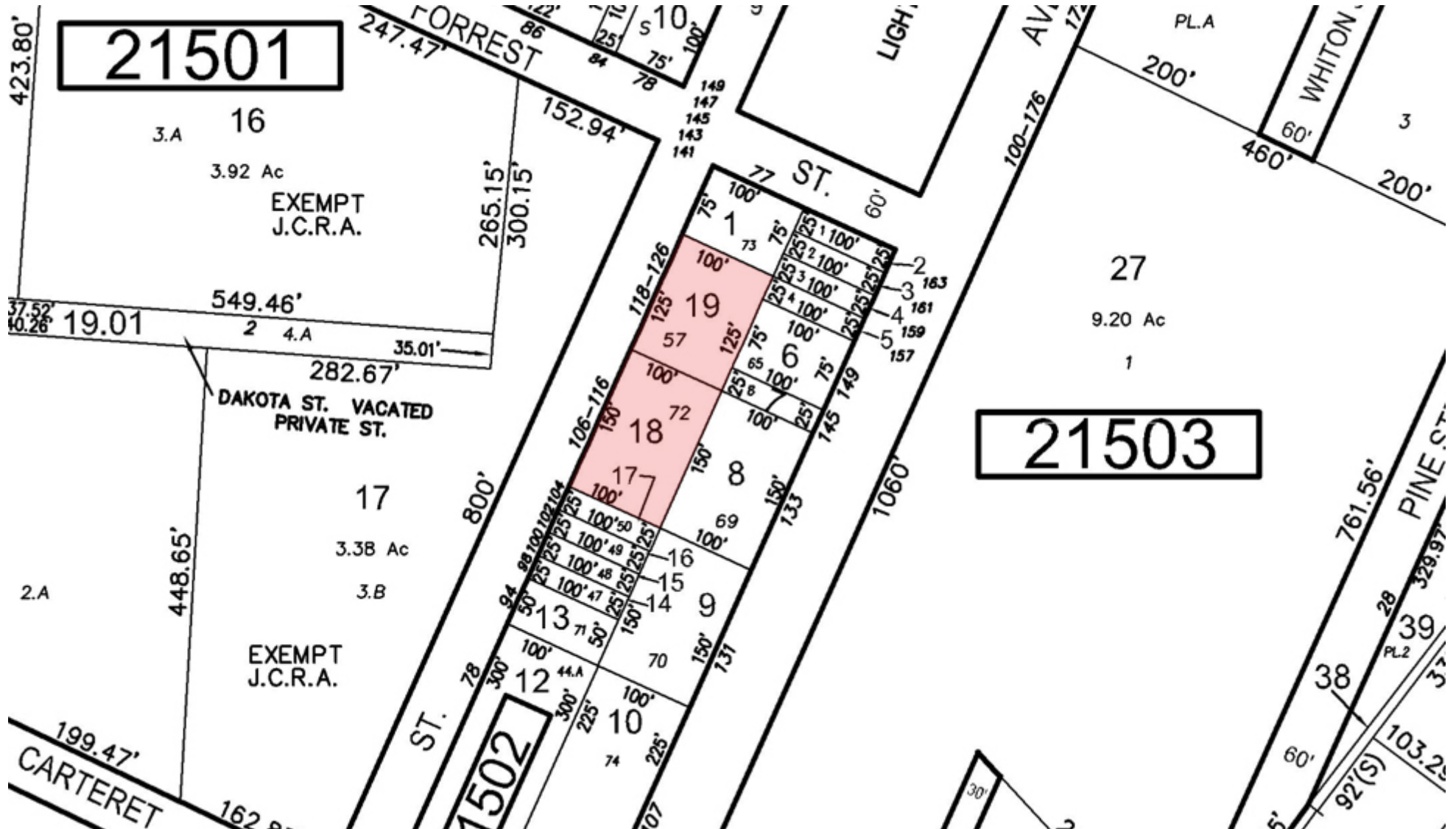
www.blauberg.com



The information contained herein has been obtained from sources considered to be reliable, but no guarantee of its accuracy is made by this company. In addition, no representation is made respecting zoning, condition of title, dimensions, or any matters of a legal or environmental nature. Such matters should be referred to legal counsel for determination. Terms and conditions are subject to change without prior notice. Subject to errors and omissions.

±0.63-ACRE INDUSTRIAL LAND

106-126 Halladay Street, Jersey City, NJ 07304



For More Information, Contact the Exclusive Brokers

JASON M. CRIMMINS, CCIM, SIOR
 President
 jmcrimmins@blauberg.com
 973.379.6644 x122

ALESSANDRO (ALEX) CONTE, CCIM, SIOR
 Executive Vice President
 acont@blauberg.com
 973.379.6644 x131

PETER J. MURANO, JR., SIOR
 Managing Executive Director
 pjmurano@blauberg.com
 973.379.6644 x114

830 Morris Turnpike
 Suite 201
 Short Hills, NJ 07078

www.blauberg.com



The information contained herein has been obtained from sources considered to be reliable, but no guarantee of its accuracy is made by this company. In addition, no representation is made respecting zoning, condition of title, dimensions, or any matters of a legal or environmental nature. Such matters should be referred to legal counsel for determination. Terms and conditions are subject to change without prior notice. Subject to errors and omissions.

±0.63-ACRE INDUSTRIAL LAND

106-126 Halladay Street, Jersey City, NJ 07304



For More Information, Contact the Exclusive Brokers

JASON M. CRIMMINS, CCIM, SIOR

President
jmcrimmins@blauberg.com
973.379.6644 x122

ALESSANDRO (ALEX) CONTE, CCIM, SIOR

Executive Vice President
aconte@blauberg.com
973.379.6644 x131

PETER J. MURANO, JR., SIOR

Managing Executive Director
pjmurano@blauberg.com
973.379.6644 x114

830 Morris Turnpike
Suite 201
Short Hills, NJ 07078

www.blauberg.com



The information contained herein has been obtained from sources considered to be reliable, but no guarantee of its accuracy is made by this company. In addition, no representation is made respecting zoning, condition of title, dimensions, or any matters of a legal or environmental nature. Such matters should be referred to legal counsel for determination. Terms and conditions are subject to change without prior notice. Subject to errors and omissions.

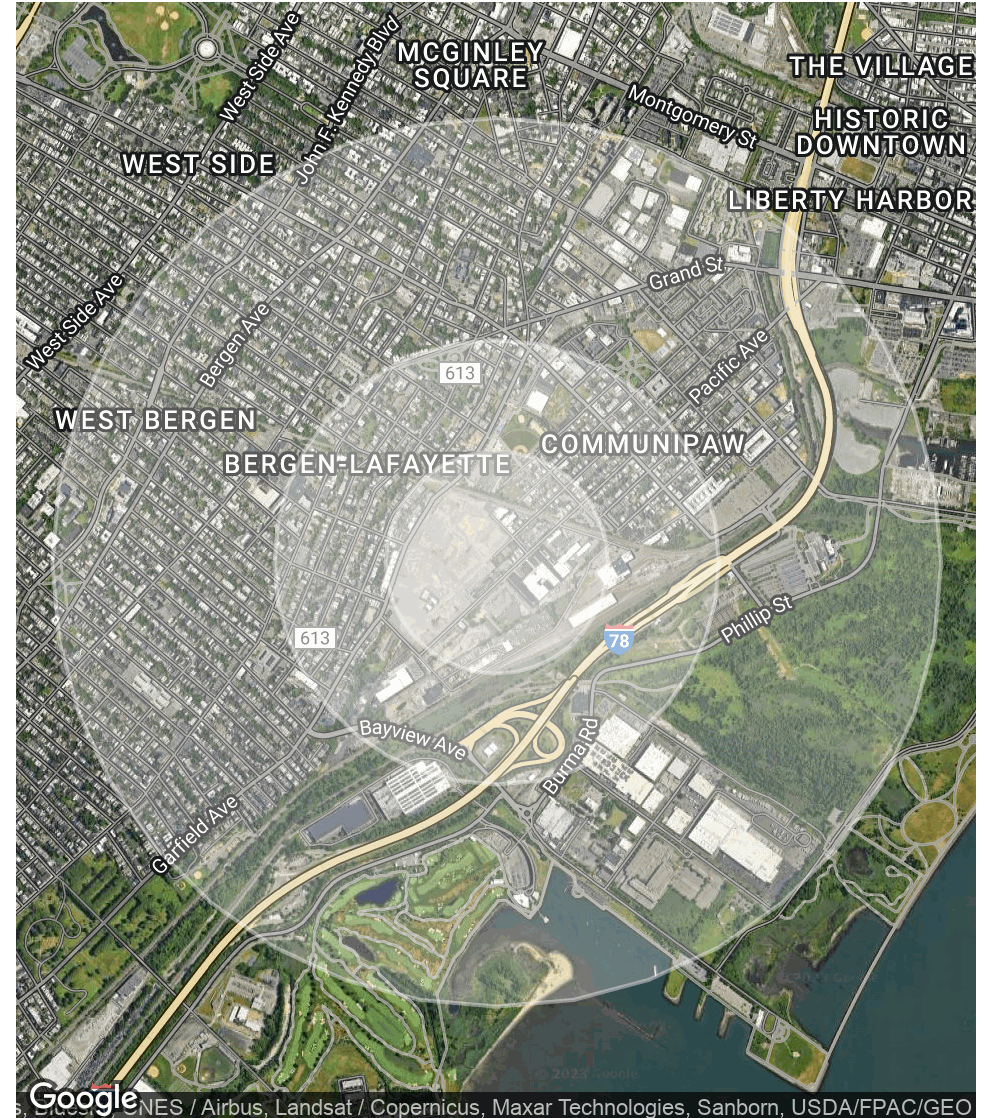
±0.63-ACRE INDUSTRIAL LAND

106-126 Halladay Street, Jersey City, NJ 07304

POPULATION	0.25 MILES	0.5 MILES	1 MILE
Total Population	2,120	8,811	41,390
Average Age	33.4	33.4	33.8
Average Age (Male)	33.4	30.8	31.5
Average Age (Female)	33.0	34.6	36.5

HOUSEHOLDS & INCOME	0.25 MILES	0.5 MILES	1 MILE
Total Households	799	3,479	16,250
# of Persons per HH	2.7	2.5	2.5
Average HH Income	\$58,995	\$53,885	\$63,043
Average House Value	\$537,170	\$457,586	\$388,907

* Demographic data derived from 2020 ACS - US Census



For More Information, Contact the Exclusive Brokers

JASON M. CRIMMINS, CCIM, SIOR
 President
 jmcrimmins@blauberg.com
 973.379.6644 x122

ALESSANDRO (ALEX) CONTE, CCIM, SIOR
 Executive Vice President
 acont@blauberg.com
 973.379.6644 x131

PETER J. MURANO, JR., SIOR
 Managing Executive Director
 pjmurano@blauberg.com
 973.379.6644 x114

830 Morris Turnpike
 Suite 201
 Short Hills, NJ 07078

www.blauberg.com



The information contained herein has been obtained from sources considered to be reliable, but no guarantee of its accuracy is made by this company. In addition, no representation is made respecting zoning, condition of title, dimensions, or any matters of a legal or environmental nature. Such matters should be referred to legal counsel for determination. Terms and conditions are subject to change without prior notice. Subject to errors and omissions.

±0.63-ACRE INDUSTRIAL LAND

106-126 Halladay Street, Jersey City, NJ 07304



JASON M. CRIMMINS, CCIM, SIOR

President

C: 973.568.6611

jmcrimmins@blauberg.com



ALESSANDRO (ALEX) CONTE, CCIM, SIOR

Executive Vice President

C: 973.432.1648

aconte@blauberg.com



PETER J. MURANO, JR., SIOR

Managing Executive Director

C: 973.214.9375

pjmurano@blauberg.com

For More Information, Contact the Exclusive Brokers

JASON M. CRIMMINS, CCIM, SIOR

President

jmcrimmins@blauberg.com
973.379.6644 x122

ALESSANDRO (ALEX) CONTE, CCIM, SIOR

Executive Vice President

aconte@blauberg.com
973.379.6644 x131

PETER J. MURANO, JR., SIOR

Managing Executive Director

pjmurano@blauberg.com
973.379.6644 x114

830 Morris Turnpike
Suite 201
Short Hills, NJ 07078

www.blauberg.com



The information contained herein has been obtained from sources considered to be reliable, but no guarantee of its accuracy is made by this company. In addition, no representation is made respecting zoning, condition of title, dimensions, or any matters of a legal or environmental nature. Such matters should be referred to legal counsel for determination. Terms and conditions are subject to change without prior notice. Subject to errors and omissions.