

City Centre

by Amato

36 East Northampton St



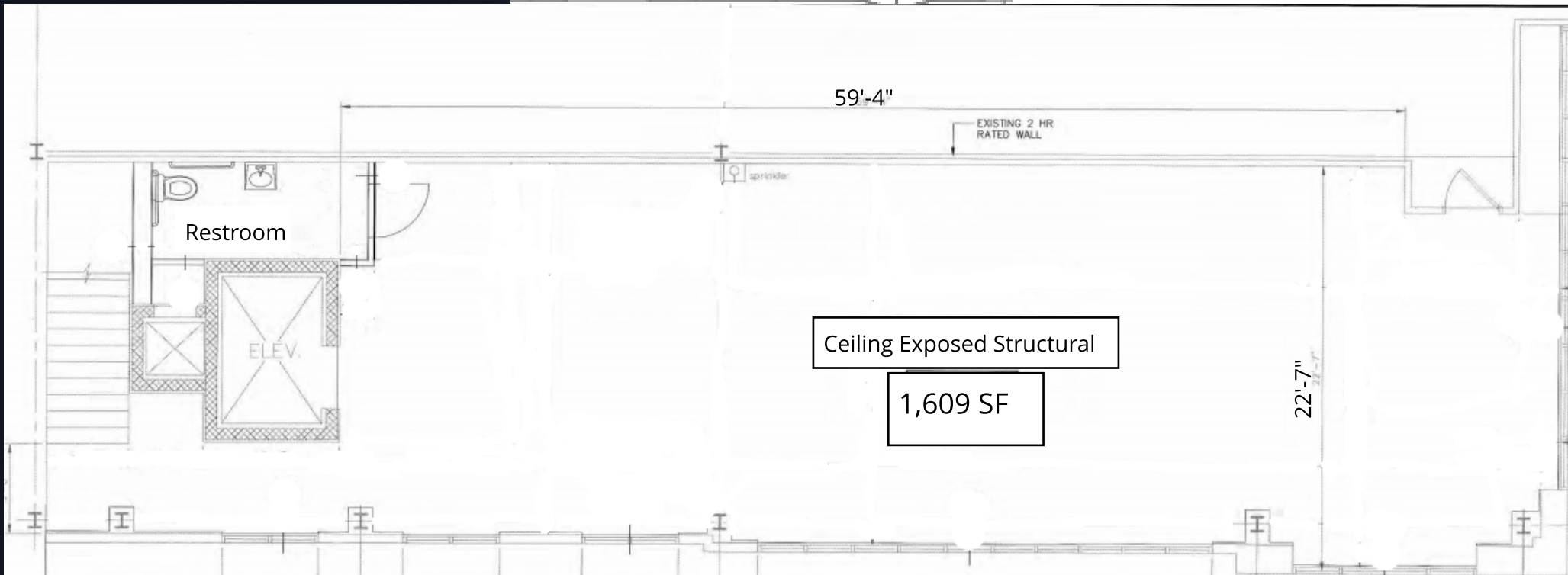
Property Features:

- Private Outdoor Parking**
- LED Lighting**
- Tenant Controlled HVAC**
- Private Elevator**
- 2 ADA Compliant Restrooms**
- Employee Break Room**
- Population 117,742 in 5 mile radius**

City Centre by Amato is located in the heart of Downtown Wilkes-Barre. The 145,000 SF mixed use development is home to Movies 14, a 14 screen cineplex operated by RC Theatre Group and the state of the art regional office of PA Cyber Charter School. The historic Downtown is alive with an abundance of quality restaurants, shops, art venues and community amenities. The city's strong base in higher education as well as it's diverse labor and industry mix and sizeable residential population contribute to the success of our clients. Nearby retailers include the Barnes & Noble Academic Superstore and Boscov's Department Store. Adjoining City Centre is a public parking garage with over 1,100 parking spaces. Amato Properties aims to exceed our client's expectations. The professional and dedicated staff of Amato Properties will provide you with a level of personal attention and assistance that other property management companies simply fail to provide.



Nicole A. Kovalski
Property & Leasing
Manager
570-287-5343
Nicole@joeamatoproperties.com

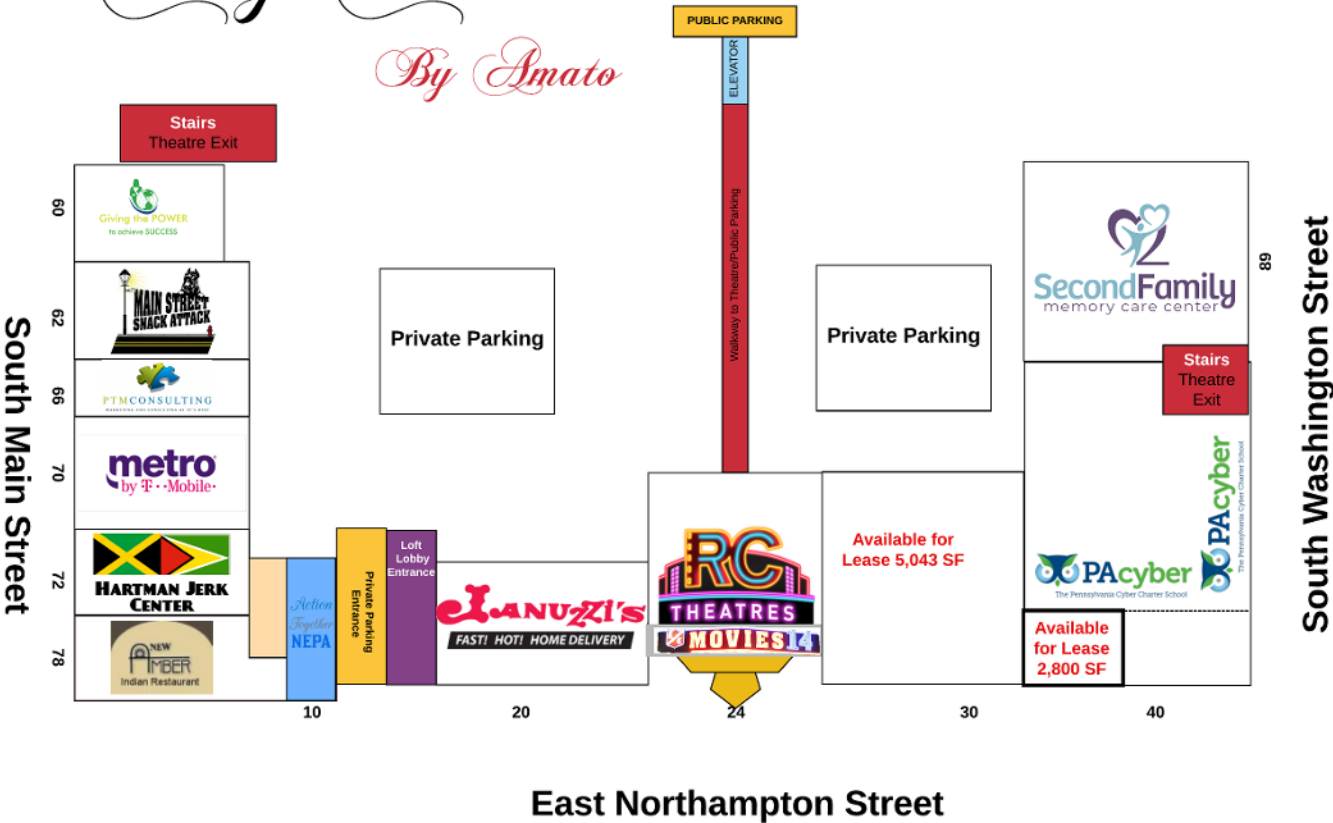


www.joeamatoproperties.com

*Adjoining public parking garage with over 1,100 parking spaces.

City Center

By Amato



Downtown Wilkes-Barre by the Numbers

1.5 million sq ft of office space with 11,300 office workers

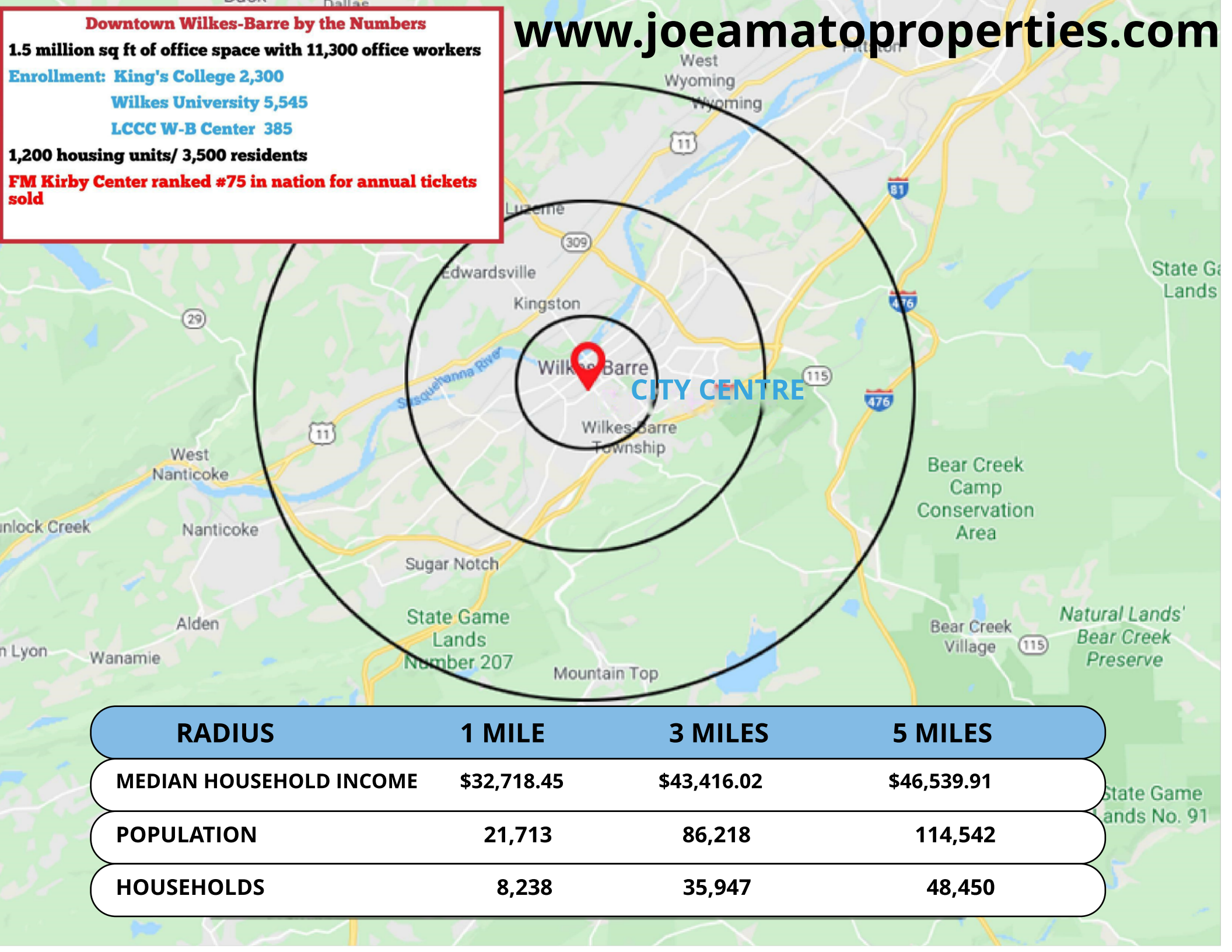
Enrollment: King's College 2,300

Wilkes University 5,545

LCCC W-B Center 385

1,200 housing units/ 3,500 residents

FM Kirby Center ranked #75 in nation for annual tickets sold



RADIUS	1 MILE	3 MILES	5 MILES
MEDIAN HOUSEHOLD INCOME	\$32,718.45	\$43,416.02	\$46,539.91
POPULATION	21,713	86,218	114,542
HOUSEHOLDS	8,238	35,947	48,450