

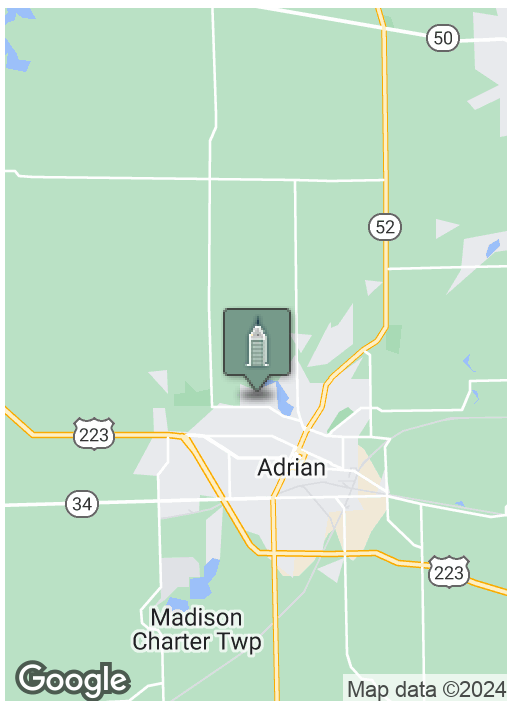
Medical, Dental & Professional Office Suites

770 RIVERSIDE, ADRIAN, MI 49221



Swisher
COMMERCIAL

FOR LEASE



SUMMARY

Suites Available

Medical | 1,347 SF

Dental | 1,516 SF

PROPERTY HIGHLIGHTS

- Medical / Professional offices available
- 18,040 SF Multi-tenant building
- Located next to Bixby Medical Center
- Immediate availability
- Ample parking

***Building
relationships.***

208 East Washington Street Ann Arbor, MI 48104

734.663.0501

Bart Wise

734.358.0354

BARTW@SWISHERCOMMERCIAL.COM

SWISHERCOMMERCIAL.COM

Medical, Dental & Professional Office Suites

770 RIVERSIDE, ADRIAN, MI 49221



SPACE	SPACE USE	LEASE RATE	LEASE TYPE	SIZE (SF)	COMMENTS
200 - 2nd Floor	Dental Office	\$2,300 PER MONTH	Includes Utilities	1,516 SF	Currently used as a dental office suite. Reception, exam rooms, dental lab and private office.
17 - Lower Level	Medical	\$1,500 PER MONTH	Includes Utilities	1,347 SF	Medical suite with 4 exam rooms reception area, waiting area, office and storage room.

***Building
relationships.***

208 East Washington Street Ann Arbor, MI 48104

734.663.0501

Bart Wise

734.358.0354

BARTW@SWISHERCOMMERCIAL.COM

SWISHERCOMMERCIAL.COM

Medical, Dental & Professional Office Suites

770 RIVERSIDE, ADRIAN, MI 49221



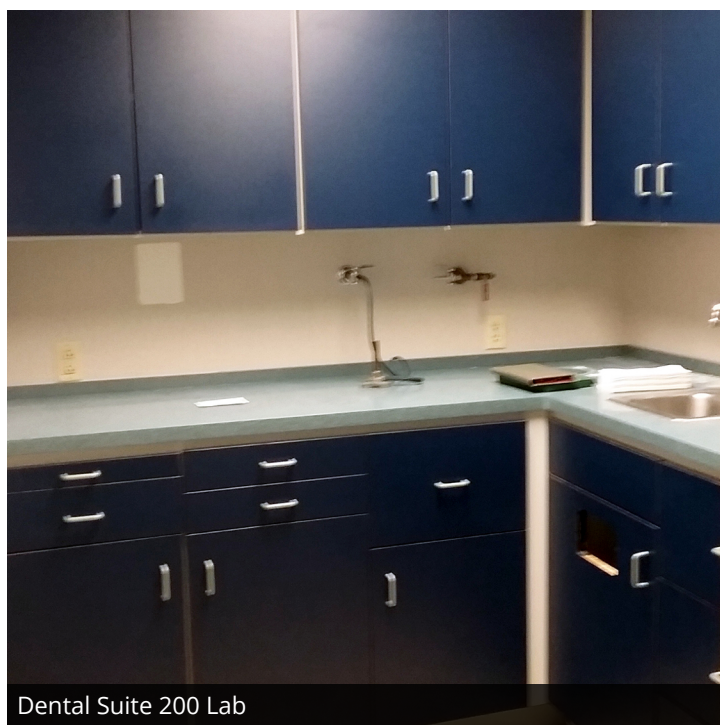
Dental Suite 200 Reception



Dental Suite 200 Exam Room



Dental Suite 200 Exam Room



Dental Suite 200 Lab

***Building
relationships.***

208 East Washington Street Ann Arbor, MI 48104

734.663.0501

Bart Wise

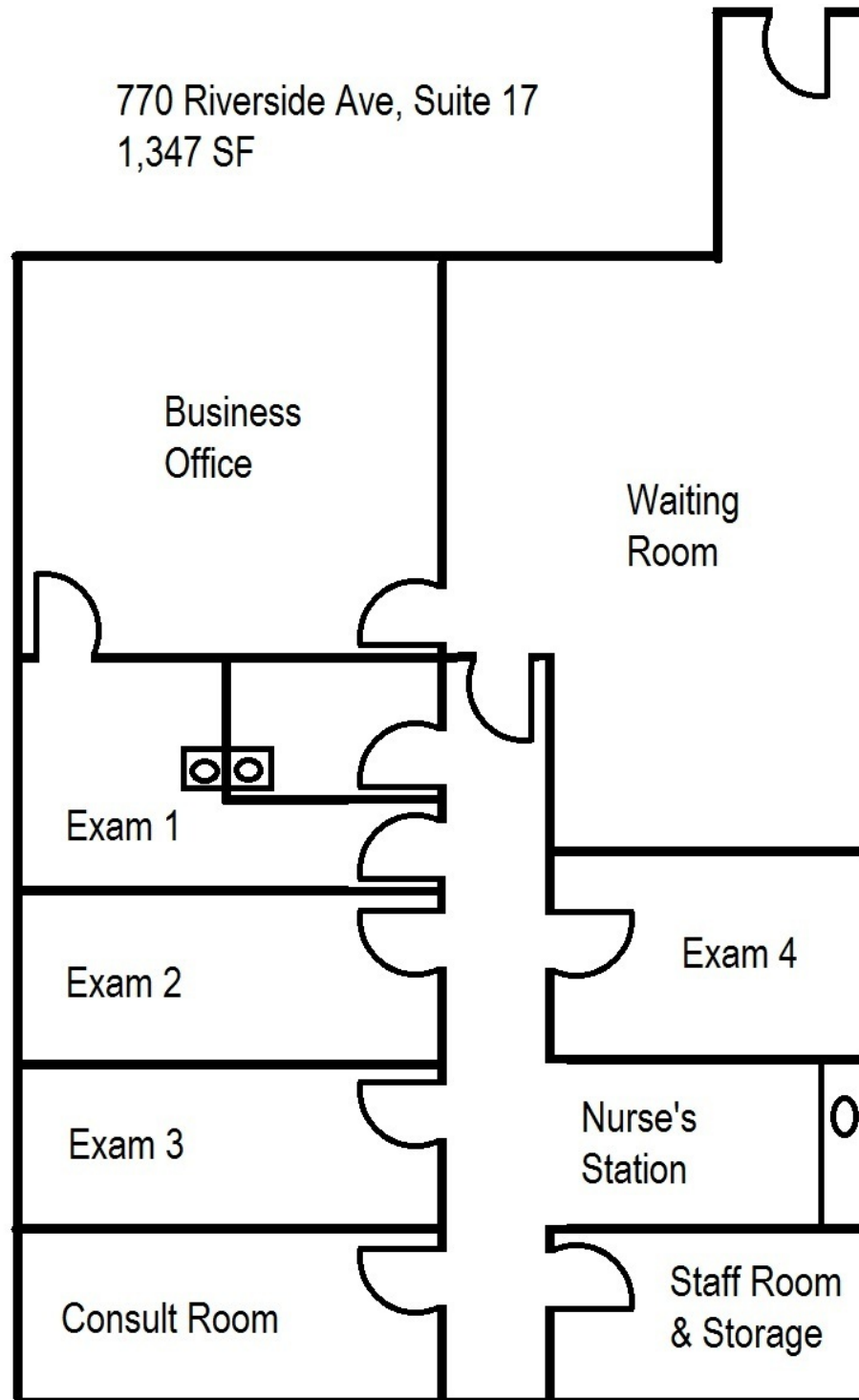
734.358.0354

BARTW@SWISHERCOMMERCIAL.COM

SWISHERCOMMERCIAL.COM

Medical, Dental & Professional Office Suites

770 RIVERSIDE, ADRIAN, MI 49221



***Building
relationships.***

208 East Washington Street Ann Arbor, MI 48104

734.663.0501

Bart Wise

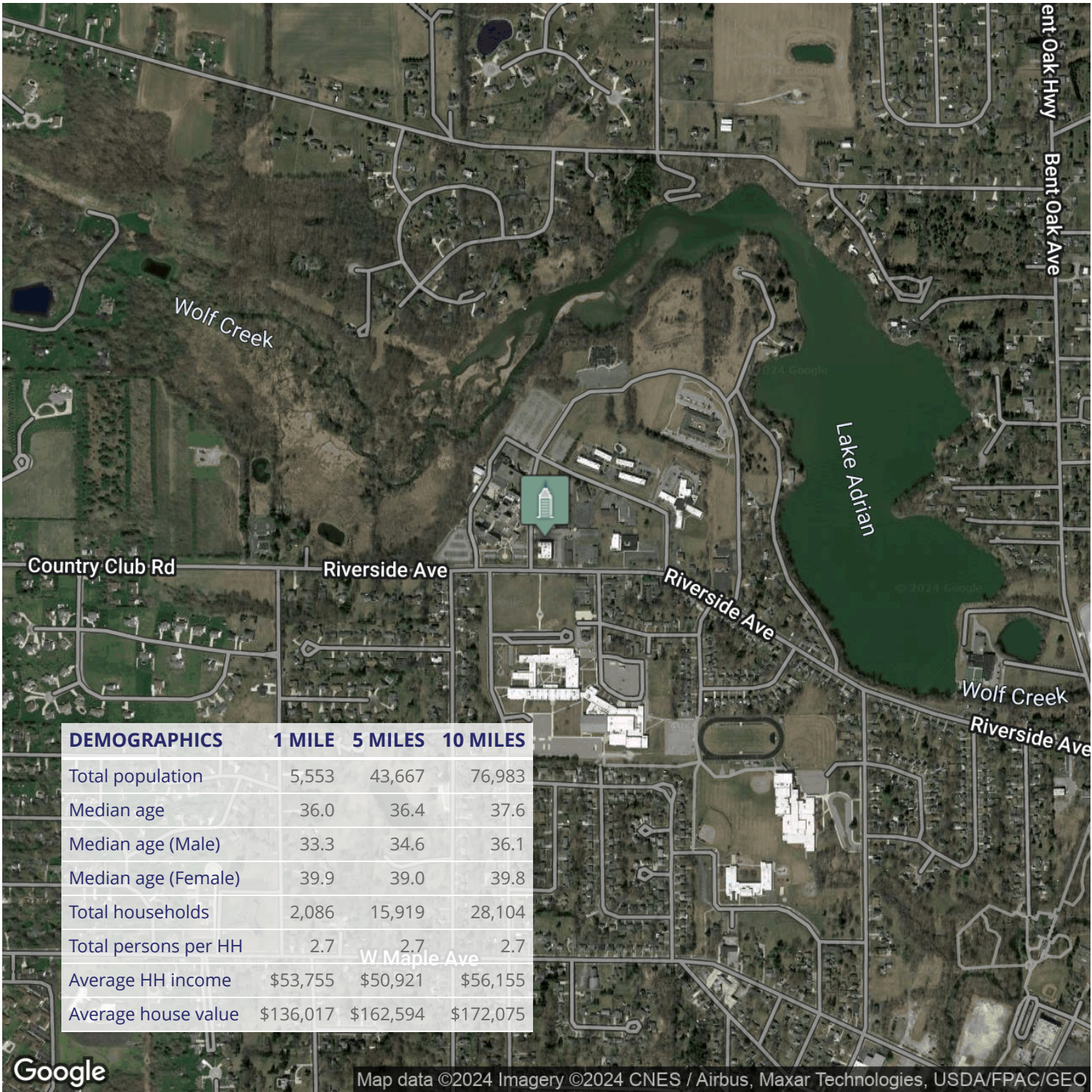
734.358.0354

BARTW@SWISHERCOMMERCIAL.COM

SWISHERCOMMERCIAL.COM

Medical, Dental & Professional Office Suites

770 RIVERSIDE, ADRIAN, MI 49221



**Building
relationships.**

208 East Washington Street Ann Arbor, MI 48104

734.663.0501

Bart Wise

734.358.0354

BARTW@SWISHERCOMMERCIAL.COM

SWISHERCOMMERCIAL.COM