



AIRPORT SQUARE

1099 WINTERSON ROAD | LINTHICUM HEIGHTS, MARYLAND 21090

FOR
LEASE



MACKENZIE

COMMERCIAL REAL ESTATE SERVICES, LLC

PROPERTY OVERVIEW

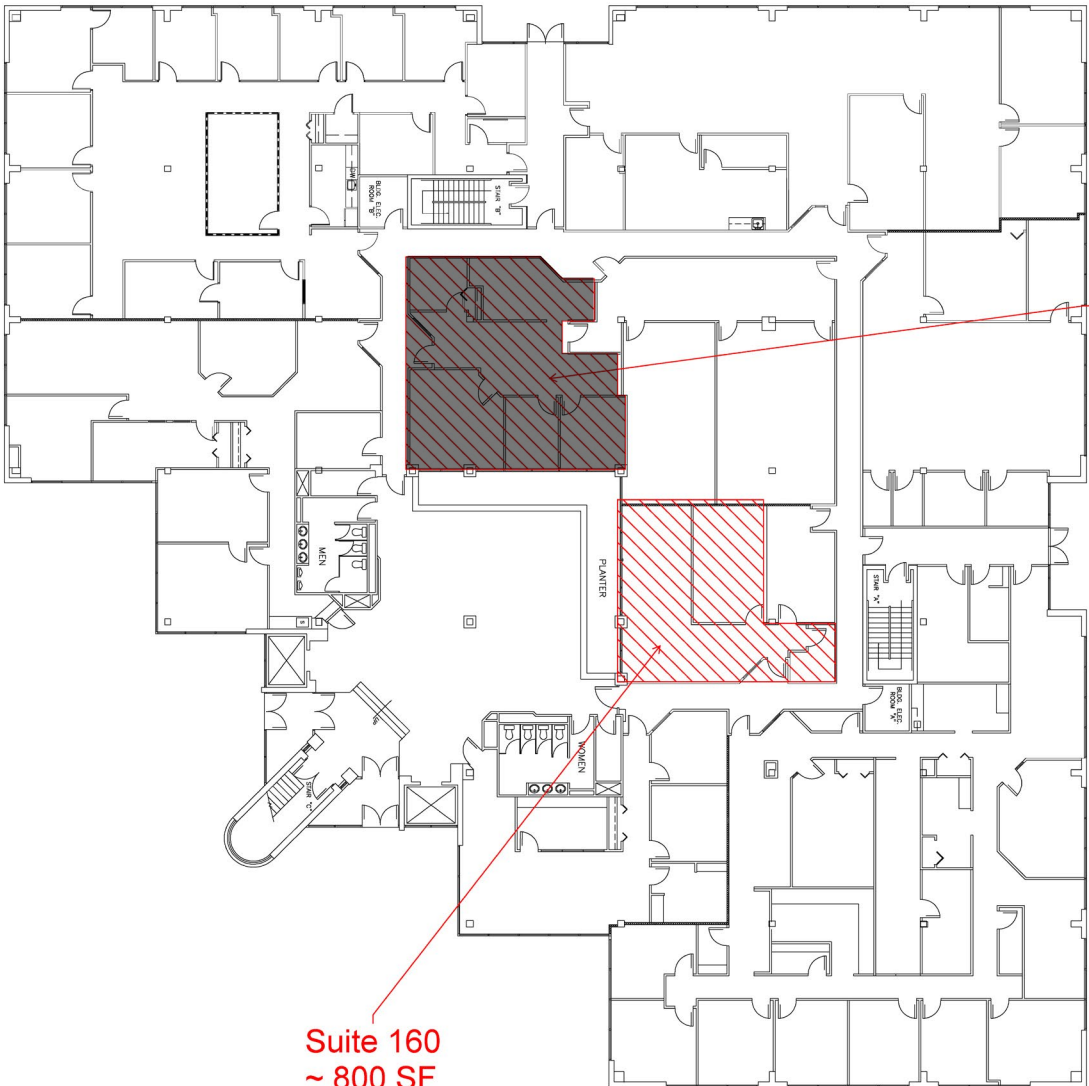
HIGHLIGHTS:

- Great location just off of Rte 295 & 695 with easy access to Baltimore and Ft. Meade
- Newly renovated lobby and common areas
- 1,600 SF fitness center for tenant's use
- Plenty of parking- (250 spaces)
- Abundant close amenities

BUILDING SIZE:	72,535 SF ±
AVAILABLE:	SUITE 160: 800 SF SUITE 285: 693 SF ±
YEAR BUILT:	1983
STORIES:	3
PARKING:	3.62/1,000 SF (250 SPACES)
ZONING:	W1 (INDUSTRIAL PARK)
RENTAL RATE:	\$17.95/SF, FS



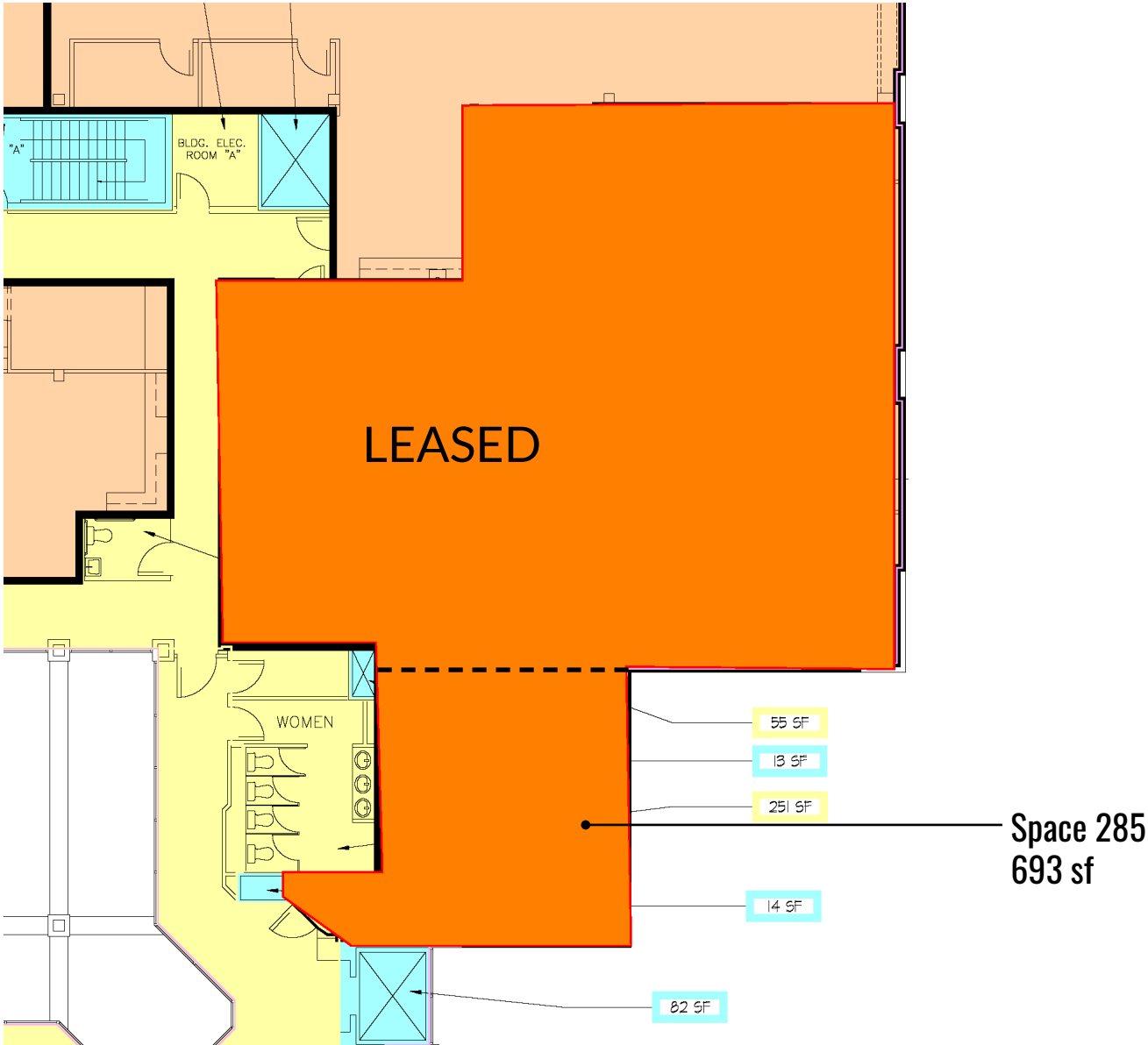
FLOOR PLAN: 1ST FLOOR



Suite 150
~ 1,165 SF
Leased

Suite 160
~ 800 SF

FLOOR PLAN: SUITE 280



LOCAL BIRDSEYE

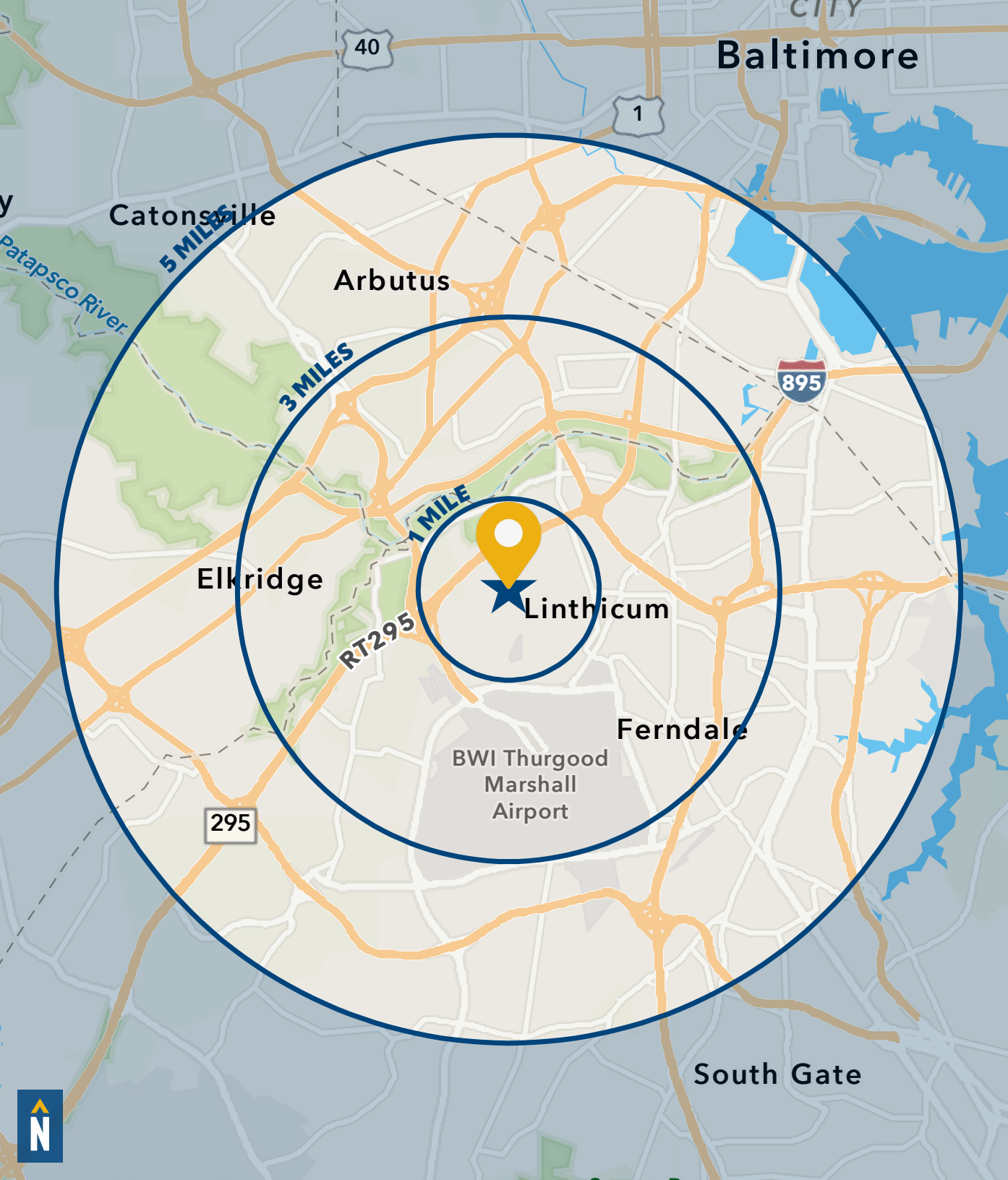


LOCAL TRADE AREA



INTERIOR PHOTOS





DEMOGRAPHICS

2023

RADIUS: **1 MILE** **3 MILES** **5 MILES**

RESIDENTIAL POPULATION



2,059	25,975	102,437
-------	--------	---------

DAYTIME POPULATION



9,954	70,987	243,983
-------	--------	---------

AVERAGE HOUSEHOLD INCOME



\$136,993	\$118,018	\$105,167
-----------	-----------	-----------

NUMBER OF HOUSEHOLDS



1,997	20,258	75,661
-------	--------	--------

MEDIAN AGE



46.6	39.5	38.1
------	------	------

[FULL DEMOS REPORT](#)



FOR MORE INFO CONTACT:



DENNIS BOYLE

SENIOR VICE PRESIDENT

443.798.9339

DBOYLE@mackenziecommercial.com



ADAM NACHLAS

SENIOR VICE PRESIDENT

443.798.9343

ANACHLAS@mackenziecommercial.com



GRAHAM SEVY

REAL ESTATE ADVISOR

410.830.1399

GSEVY@mackenziecommercial.com



VISIT **PROPERTY PAGE** FOR MORE INFORMATION.



MACKENZIE

COMMERCIAL REAL ESTATE SERVICES, LLC

410-872-0400

10175 Little Patuxent Parkway, Suite 902

Columbia, MD 21044

OFFICES IN:

ANNAPOLIS

BALTIMORE

BEL AIR

COLUMBIA

LUTHERVILLE

www.MACKENZIECOMMERCIAL.com

No warranty or representation, expressed or implied, is made as to the accuracy of the information contained herein, and same is submitted subject to errors, omissions, change of price, rental or other conditions, withdrawal without notice, and to any specific listing conditions imposed by our principals.