

Main Plant

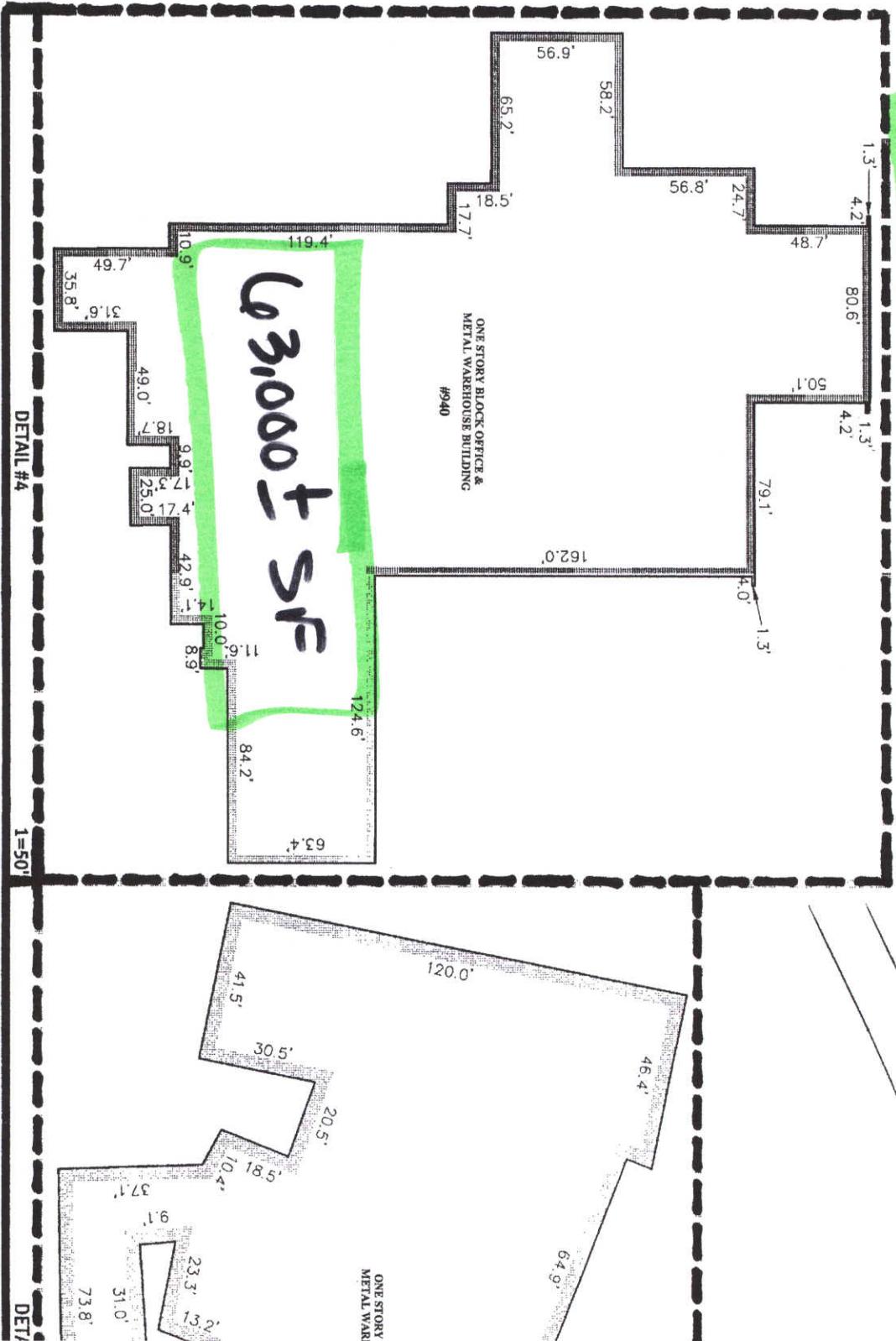
IDLING AND BEING IN THE TOWN OF BEDFORD, PARTICULARLY DESCRIBED AS FOLLOWS, TO WIT:

STREET AND POINT BEING LABELED AS POINT OF
 LER SERVICE INC. THENCE ALONG THE SOUTH
 O'RON PIN PD, THENCE ALONG A CURVE TO THE
 17-20 A LENGTH OF 252.20', A CHORD BEARING OF
 13.87° TO AN IRON PIN D, THENCE ALONG A CURVE
 OF 65.48' ±, A LENGTH OF 81.19', A CHORD BEARING
 E SOUTH 87° 00' 00" W, THENCE ALONG A CURVE
 E SOUTH 87° 00' 00" W, A LENGTH OF 100.00',
 A Y AND EARL L CHILDERS TRUST S 59.59' ± W 42.04'
 EARL L CHILDERS TRUST S 33.32' ± W 42.04'
 CHILDERS TRUST S 41.19' ± E 279.77' TO AN IRON
 LINE OF INDEPENDENCE BOULEVARD, ALONG A
 L ANGLE, E OF S 55.44', A LENGTH OF 105.66', A CHORD
 S 6.26' ± 48° W 1,343.64', PASSING THE CORNER OF THE
 518 W AND THEN RUNNING WITH THE LINE OF THE
 THE PROPERTY LINE OF THE TOWN OF BEDFORD,
 LONG PROPERTY LINE, E 40.35' ± W 380.68' TO
 AN IRON PIN D, THENCE N 40.35' ± W 380.68' TO
 EAM, THENCE N 18.22' ± 48° W 28.84' TO A POINT IN
 NORTH RIGHT OF WAY LINE OF ORANGE STREET.

MENT SEAFOODS CORPORATION, A WASHINGTON
TED LIABILITY COMPANY, DATED JULY 11, 2013 AND
T COURT OF BEDFORD COUNTY, VIRGINIA IN

THE BUILDINGS AND IMPROVEMENTS THEREON AND 3. LYING IN THE TOWN OF BELFORD, VIRGINIA, UPON A PLAT ENTITLED "PLAT SHOWING SURVEY OF RVICE, INC. TO TRIDENT SEAFODS CORPORATION DATED DECEMBER 3, 2013, WHICH SAID PLAT IS

WENT SEAFOODS CORPORATION, A VIRGINIA
ICE, INC., A VIRGINIA CORPORATION, DATED
ARK'S OFFICE OF THE CIRCUIT COURT OF BEDFORD



10,000+SF Bldg.

FLHINI
"B"

Liber to main bldg.

064055H

0980

120'

41.5'

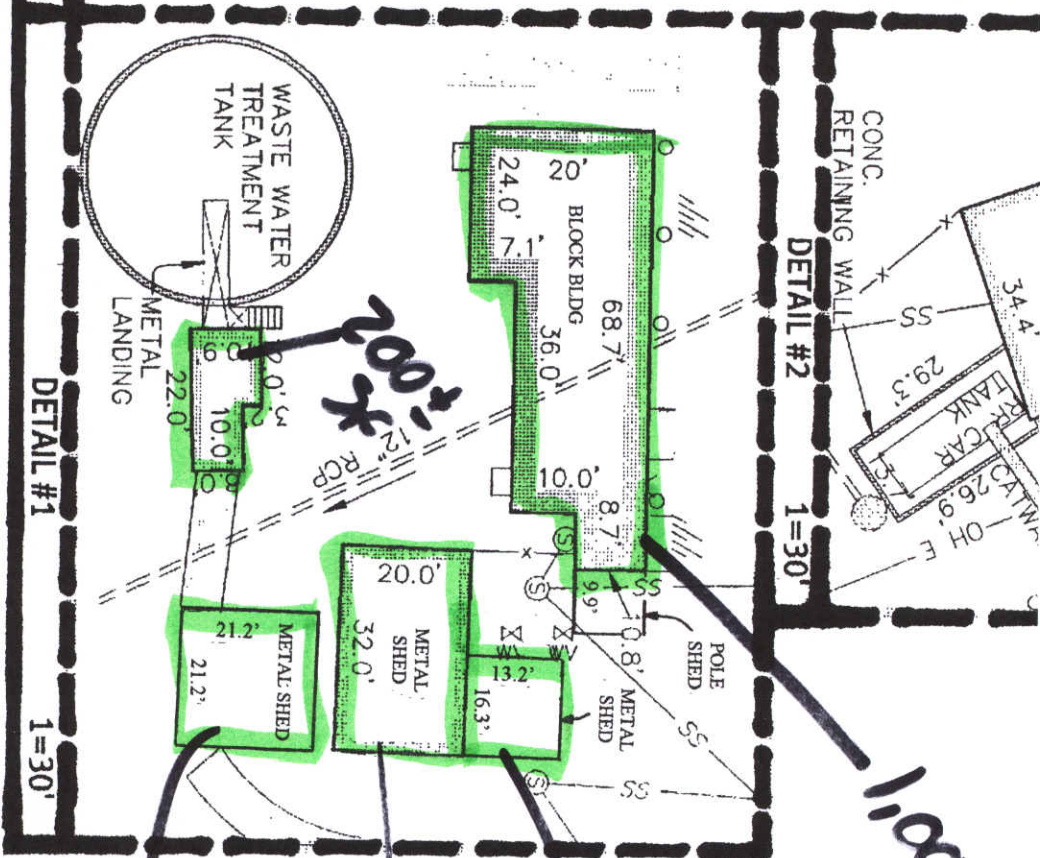
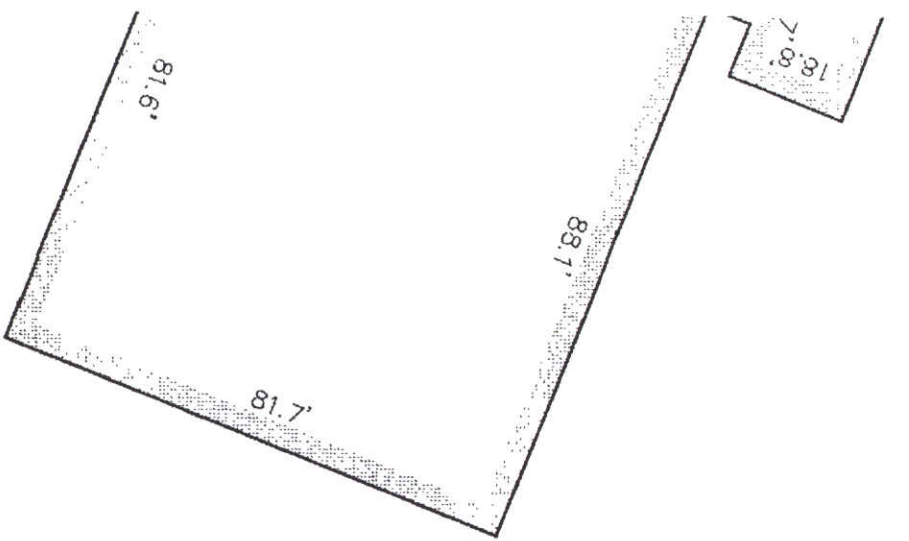
ID#3
DATA cables

10050

72.5'

1360





- UNDERGROUND
- IPF ○ IRON PIN F
- IPS ● IRON PIN S
- FENCE
- ⑤ SANITARY 1
- SANITARY 2
- SANITARY 3
- CORRUGATE
- REINFORCEL
- EDGE OF P,
- EDGE OF G
- CARBON DIC
- ABOVE GRO
- POINT IN STR
- AIR CONDIT
- BOLLARD PC
- BASKETBALL
- FLAG POLE
- GATE
- CENTERLINE
- CONCRETE

Extra Bldg #1
2,500 ± SF

1=30'

DETAIL #1

1=30'

DETAIL #2

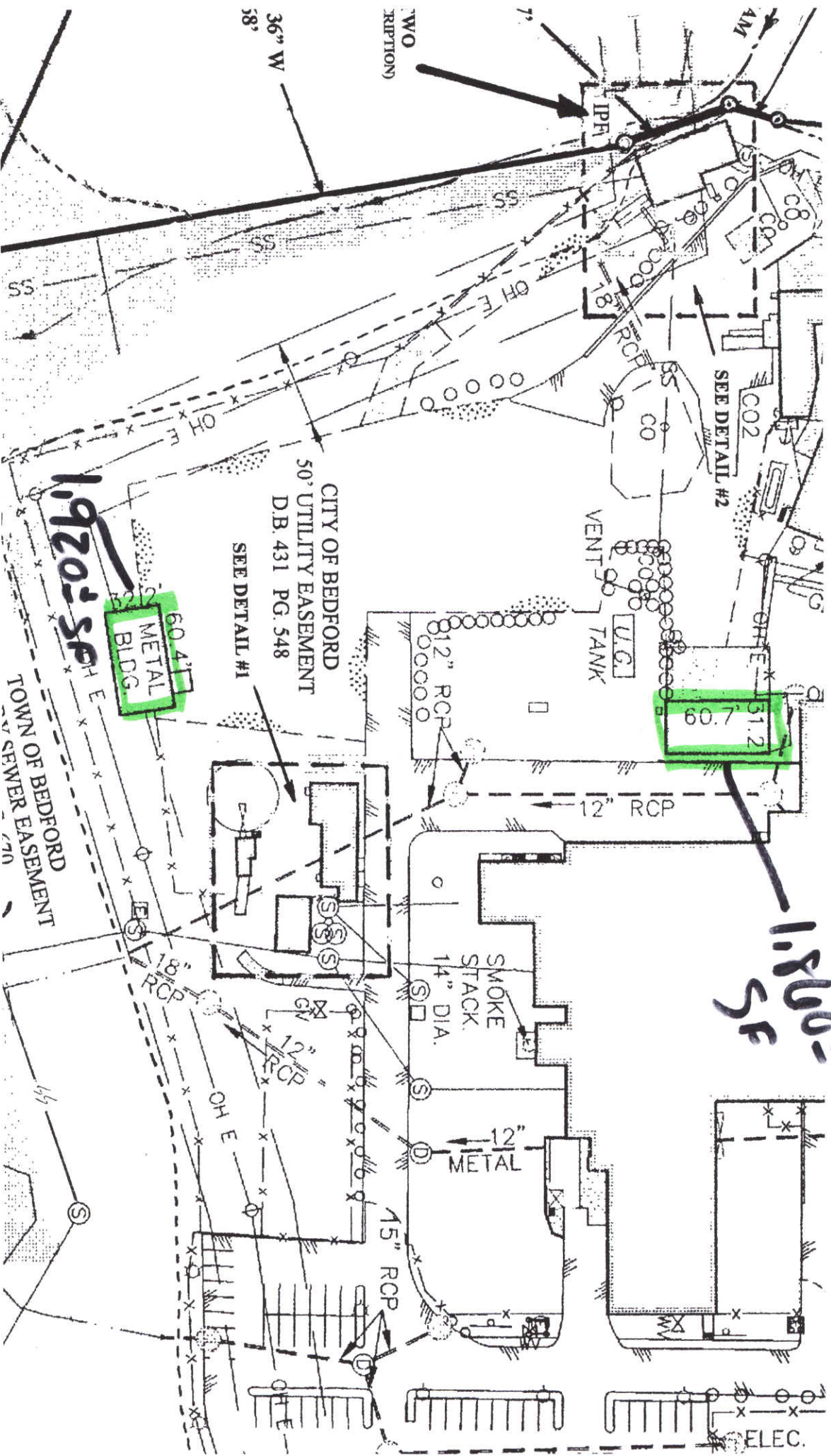
1=30'

1,004 SF ±

208 ± SF

440 ± SF

440



Extra Bldg #2 & 3
3,780 ± sf

1,860 ± sf

1,920 ± sf

60.4' METAL BLDG

60.7' 31.2'