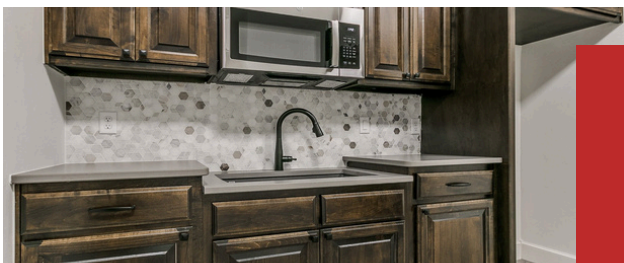




COMMERCIAL REAL ESTATE

OFFICE SPACES AVAILABLE!

We present to you the best place for your office: one of the best and most modern real estate properties ever, with a minimalist and modern interior design. Call us today to schedule your showing!



 405-358-3311

 2761 Washington Drive Suite #111
Norman, OK 73069

 ichristian@roi-re.com
allison@roi-re.com

EXECUTIVE SUMMARY



PROPERTY OVERVIEW

The perfect opportunity to give your business a brand new, warm, and comfortable place to be. You, Your team, your clients and guests will be happy and productive. This office and office park are well designed to accommodate today's business needs. Office has a welcoming lobby, open break-room, large conference room, plenty of storage, spacious private offices, and a nice open area for that open office concept.

Isaac Christian
ichristian@roi-re.com
405-358-3311

Allison Reeves
allison@roi-re.com
405-358-3311



SANTA FE OFFICE PARK

FOR LEASE

AVAILABLE SPACE

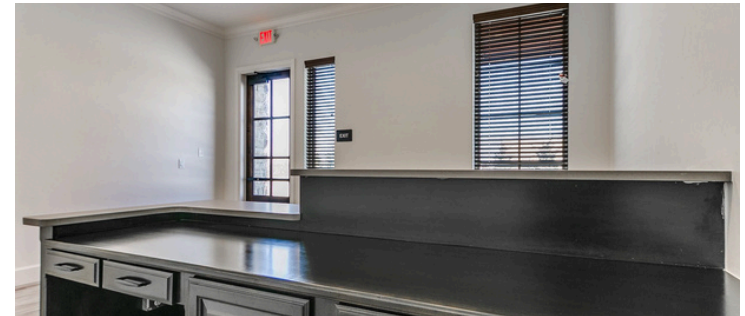
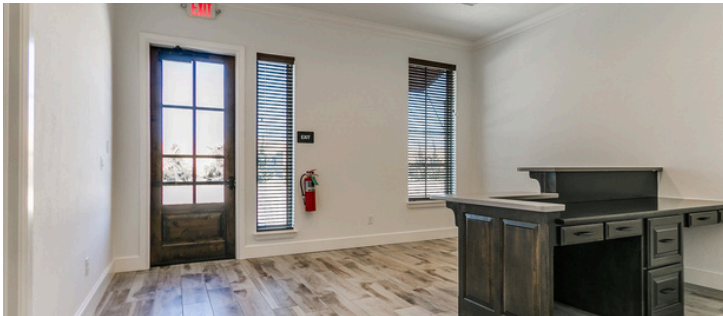
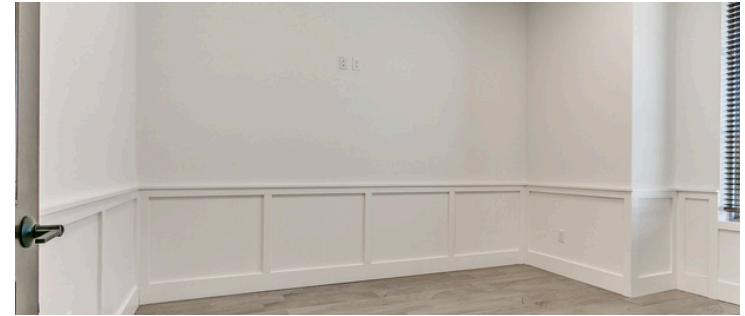
Space	Space Size	Lease Rate	Available
13701 Santa Fe			
Suite B	1,605	\$25.13/sf + NNN	NOW
13709 Santa Fe			
Suite B	1,348	\$22/sf + NNN	NOW
Suite D	1,348	\$22/sf + NNN	NOW

Isaac Christian
ichristian@roi-re.com
405-358-3311

Allison Reeves
allison@roi-re.com
405-358-3311



ADDITIONAL PHOTOS



Isaac Christian
ichristian@roi-re.com
405-358-3311

Allison Reeves
allison@roi-re.com
405-358-3311



LOCATION MAP



Isaac Christian
ichristian@roi-re.com
405-358-3311

Allison Reeves
allison@roi-re.com
405-358-3311

