

1.5 +/- Acre Corner, Hwy 31 at Vance Street, Pelham, AL 35124

\$1,200,000

Bobby Bynum
205.500.1188
bobby@bobbybynum.com

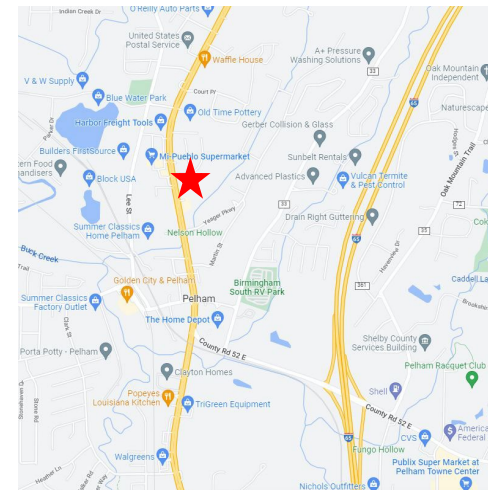


- All utilities available
- 304 ft. of Hwy 31 frontage
- Corner Property has frontage on Hwy 31 and Vance Street
- Great location and excellent visibility
- Commuting thoroughfare



Possible uses:

- Restaurant
- Convenience Store
- Retail
- Medical
- Office

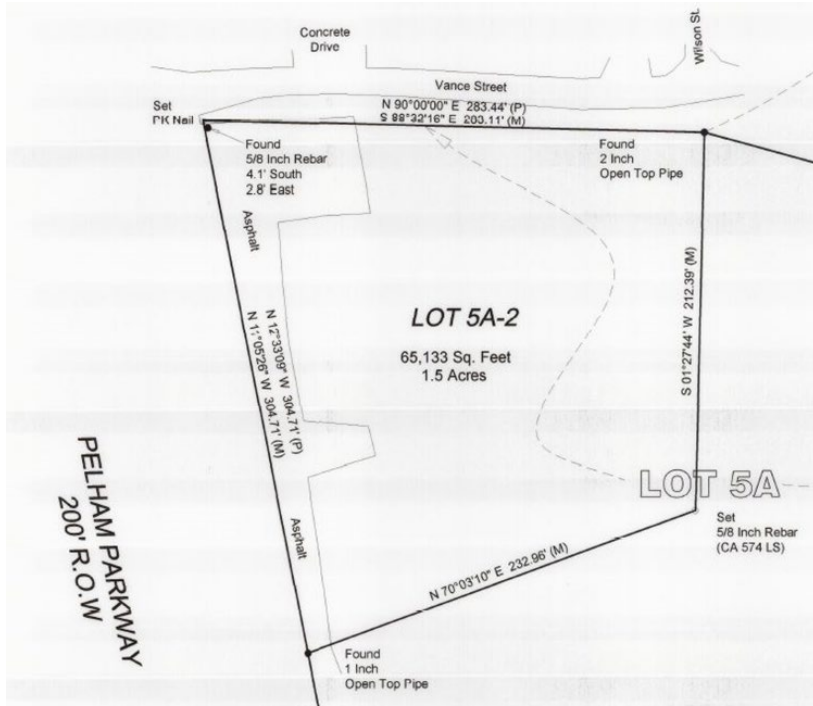


All information provided is deemed reliable but is not guaranteed and should be independently verified. All information is subject to change without notice including withdrawal of this listing. No warranty or representation is made as to the condition of the property.

INTEGRITY
COMMERCIAL
BOBBY BYNUM
INTEGRITY REAL ESTATE

Hwy 31
Pelham, AL 35124

Integrity Real Estate • County Road 222 • Crane Hill, AL 35053



Bobby Bynum
205.500.1188
 bobby@bobbybynum.com

INTEGRITY
 COMMERCIAL
BOBBY BYNUM
 INTEGRITY REAL ESTATE

All information provided is deemed reliable but is not guaranteed and should be independently verified. All information is subject to change without notice including withdrawal of this listing. No warranty or representation is made as to the condition of the property.