



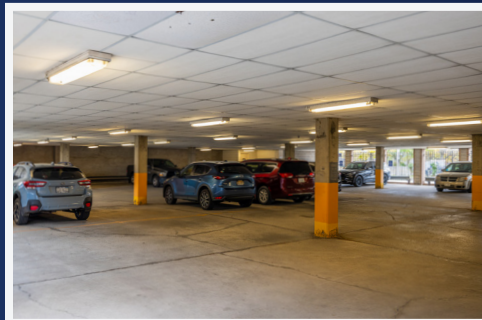
109 South Union St.

Rochester, NY 14607

Space Available for Lease

- » Located in the Desirable East End of Downtown Rochester
- » Ideal for Office/Retail Space
- » Turn Key Space With Modern Amenities
- » Walking Distance from the Neighborhood of Play
- » 45 Surface Parking Spaces, 48 Covered Parking Spaces

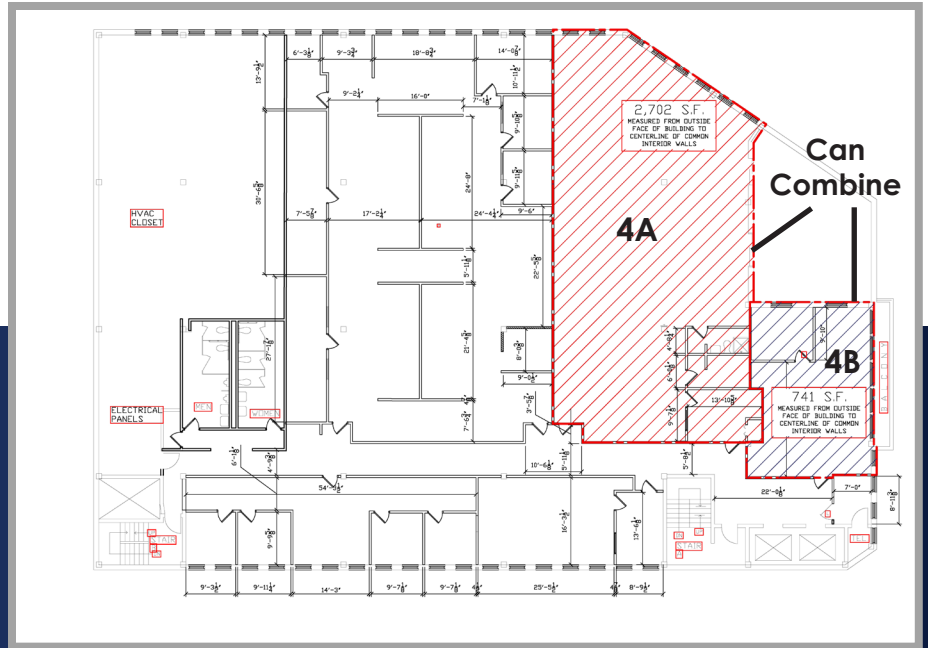
South Union St is a 4-Story 37,000+/SF Office building located in the desirable East End of downtown Rochester. The property includes covered parking as well as 2 adjacent surface lots. 109 South Union St is located near the corners of Monroe Avenue and South Union Street and backs up to the Inner Loop. This location is within walking distance to dozens of restaurants, cafes, and night spots.



Real Estate *it's in our blood!*

www.flaummgmt.com

Contact Us: 400 Andrews Street #500 | Rochester, NY 14604 | 585.546.4866



Let our experienced professionals help you today. With decades of experience, our team brings a wealth of knowledge in real estate, brokerage, and project management.