

LONE PEAK CENTER 4



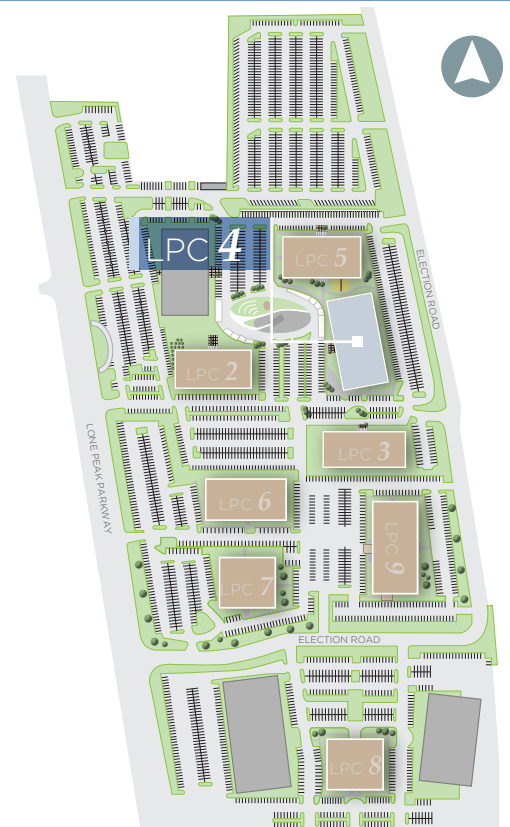
11778 SOUTH ELECTION DRIVE | SALT LAKE CITY, UTAH

BUILDING FEATURES

- 56,999 RSF
- Conference Center/Tenant Lounge (currently under construction)
- Fitness Center with lockers and shower facilities
- Adjacent to Volleyball and Central Park ("the Loop") amenity
- Great freeway visibility

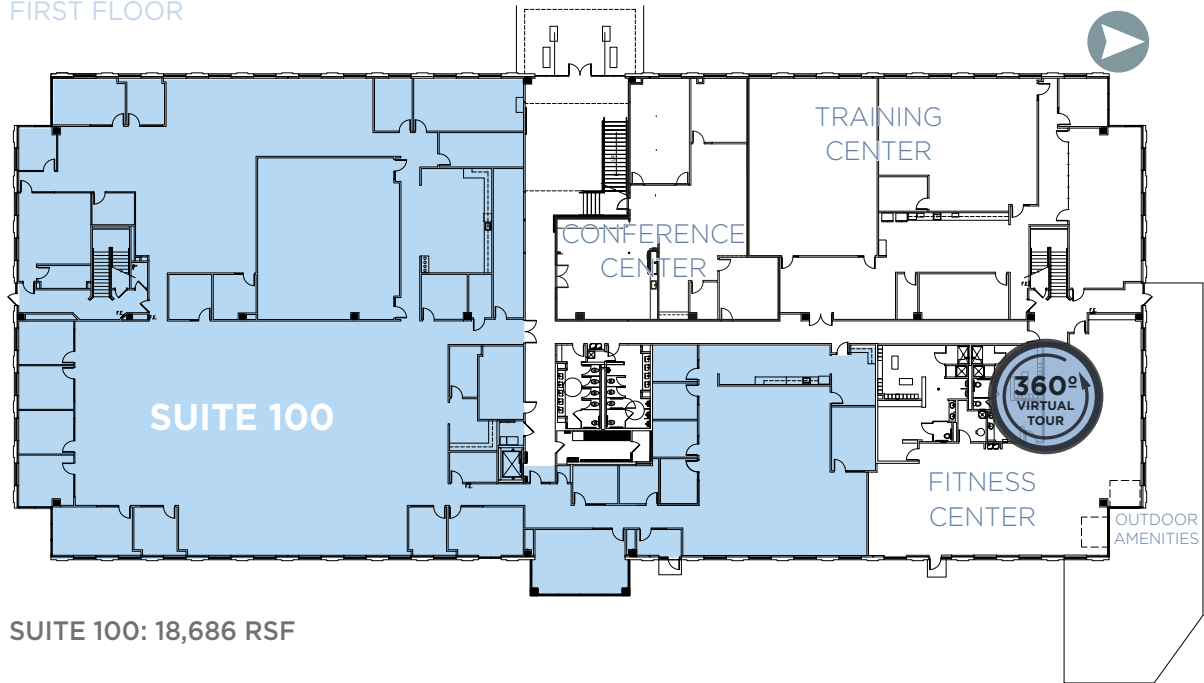


MAIER SIEBEL BABER



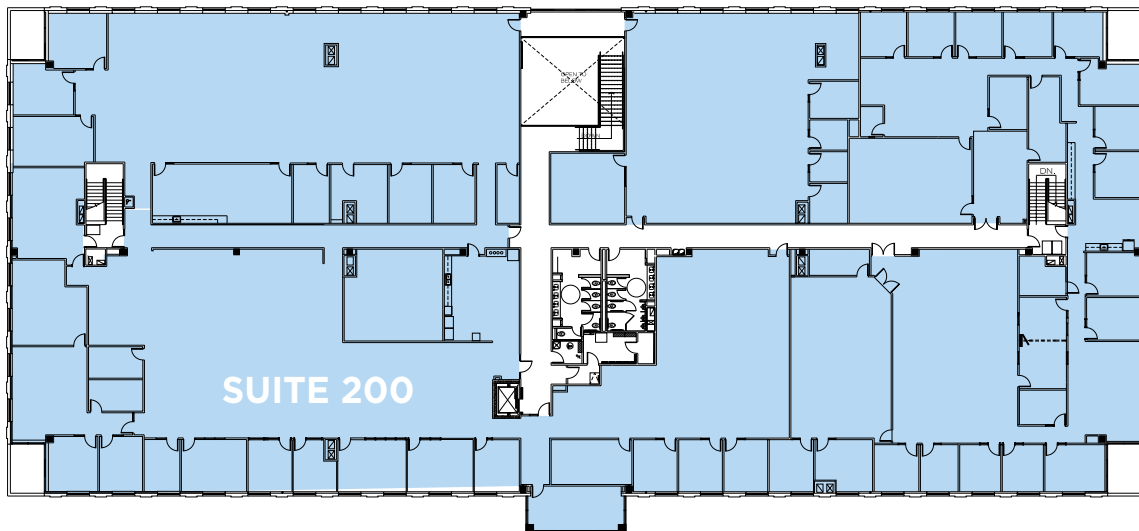
LONE PEAK CENTER 4

FIRST FLOOR



SUITE 100: 18,686 RSF

SECOND FLOOR



SUITE 200: 38,313 RSF

FOR LEASING INFORMATION, PLEASE CONTACT:

DANA BAIRD, CCIM
Executive Managing Director
(801) 303 5526
dana.baird@cushwake.com

MIKE RICHMOND
Executive Managing Director
(801) 303 5434
mike.richmond@cushwake.com

 **CUSHMAN & WAKEFIELD**
MAIER SIEBEL BABER